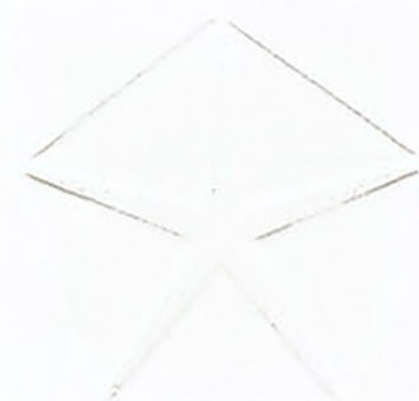
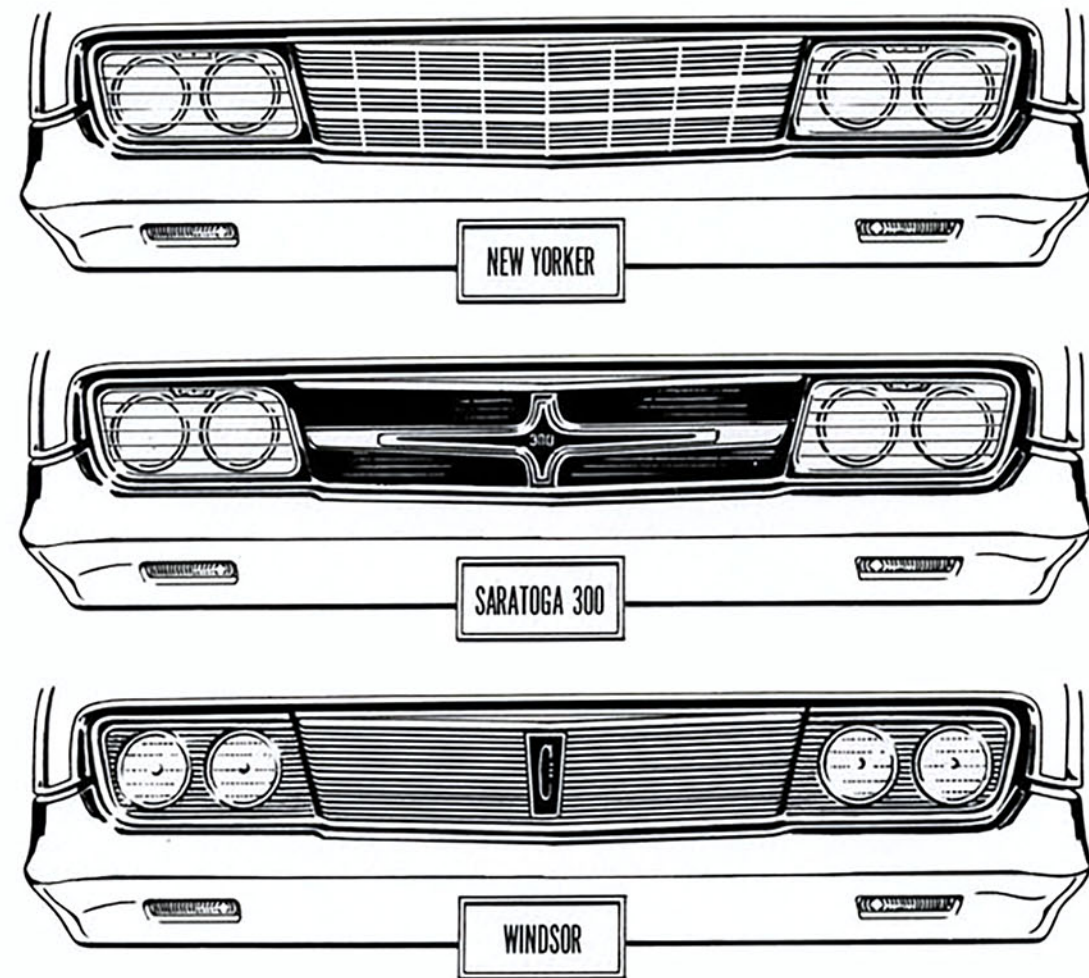


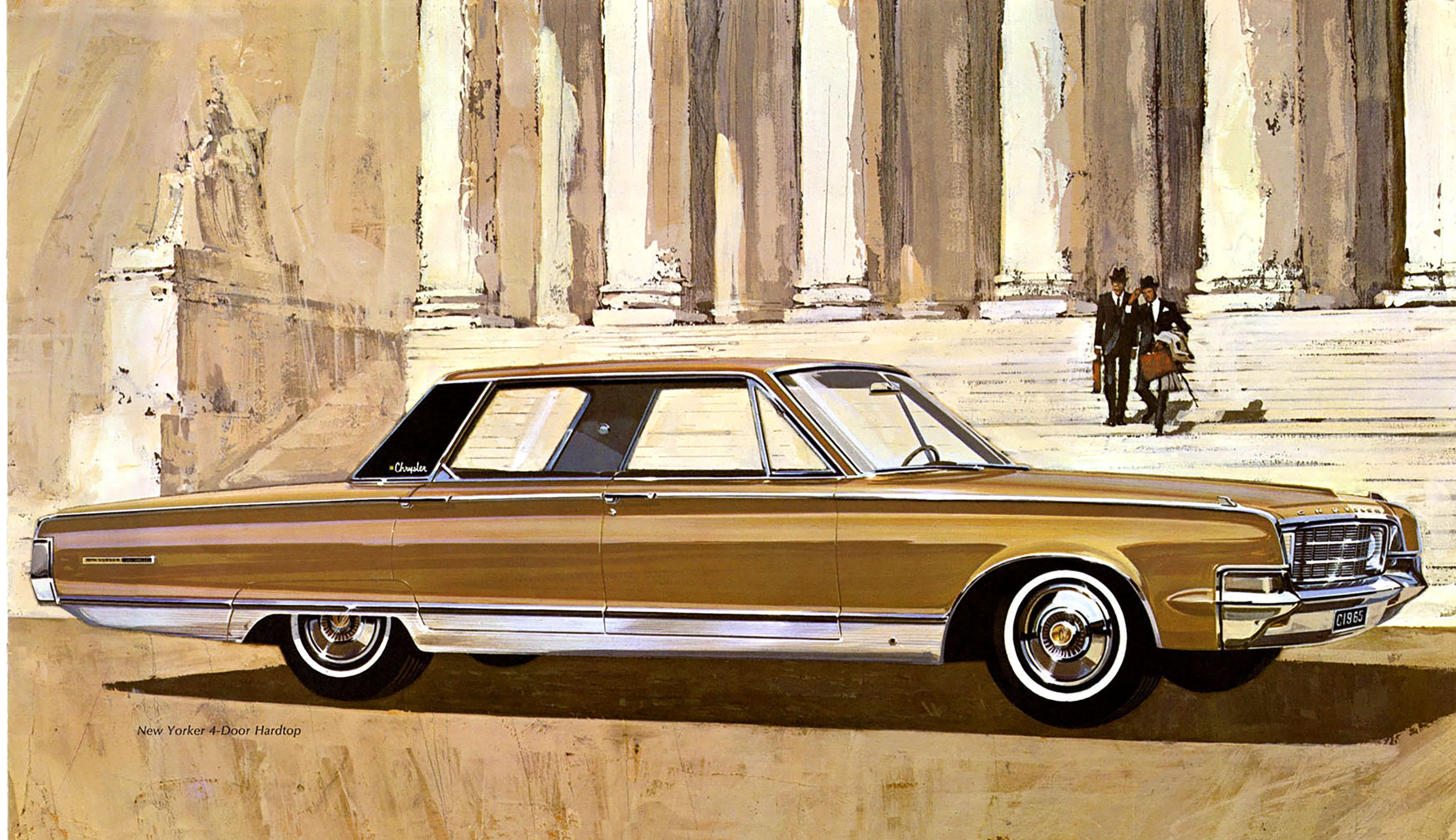
1965 CHRYSLER  
WINDSOR • SARATOGA 300 • NEW YORKER





*This year more than ever before...*

**YOU'LL ENJOY THE CHRYSLER WAY OF LIFE** For 1965, Chrysler has attained new heights of handsomeness, new levels of luxury and dramatic new dimensions in style and performance. Long and imposing in appearance, the 1965 Chrysler conveys a sense of crispness and "just right" elegance that gives you that unmistakable aura of success. Its totally new body design takes advantage of the latest advances in automotive technology and metallurgical research... the Chrysler suspension offers the ultimate in riding comfort... ingenious accessories and interior features provide a new world of convenience for driver and passengers alike. In short, Chrysler has spared no effort in 1965 to bring the very best to you... to ensure that more than ever before, you'll enjoy the Chrysler way of life!



New Yorker 4-Door Hardtop



# CHRYSLER NEW YORKER

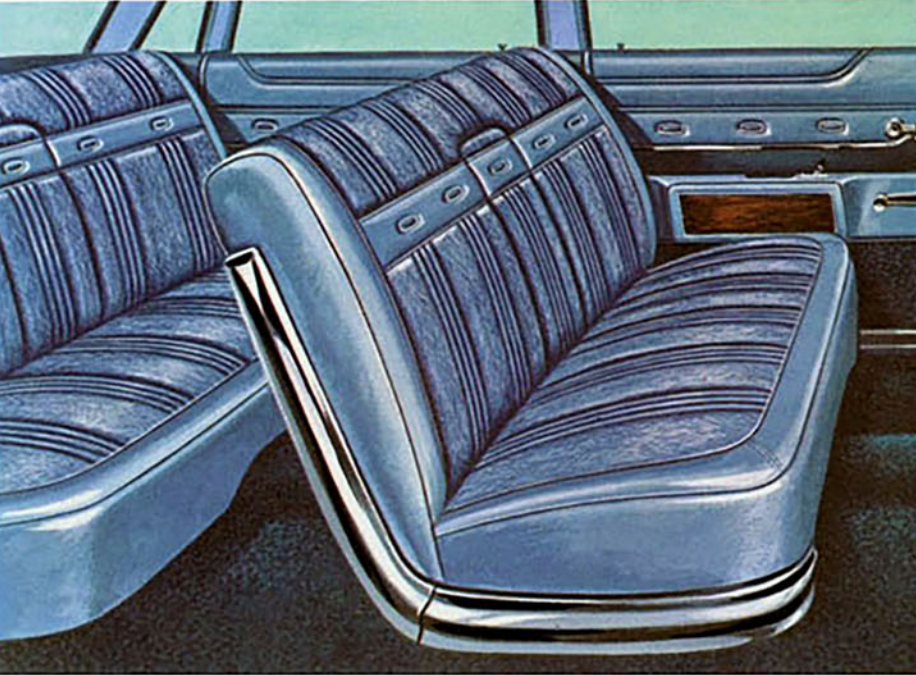
The long, gently-arching body line, capped by a slim and graceful roof, tells you immediately that this is New Yorker, 1965's prestige car and flagship of the Chrysler series. Glamorous without being ostentatious, New Yorker offers a choice of 17 high-fashion exterior colours, highlighted with bright stainless steel and other bright work that gives it a subtle glitter. Inside, skillfully-selected colours blend tastefully to complement your choice of the exterior colours . . . the posture-oriented seats have comfort and eye-appeal reminiscent of the finest modern furniture.

Beneath its beauty, the 1965 New Yorker offers the reliability and sound engineering that has made Chrysler famous the world

over . . . the kind of technical leadership typified by the unique 5-year—50,000-mile Power-Train Warranty. Chrysler's famous Torsion-AIRE suspension provides the utmost in stability and smoothness . . . and the Chrysler New Yorker V-8 engine responds instantly with surging power to place you in command of any driving situation.

There is a distinctive elegance about the New Yorker (6 window) 4-Door Sedan (shown at right). Other choices offer two good-looking Hardtops and the versatile, convenient Station Wagon (seen above). Whichever you choose, you'll find that driving a New Yorker is 1965's finest means of enjoying the Chrysler way of life.

*New Yorker interiors are the last word in elegance.*



*New Yorker 4-Door Station Wagon*

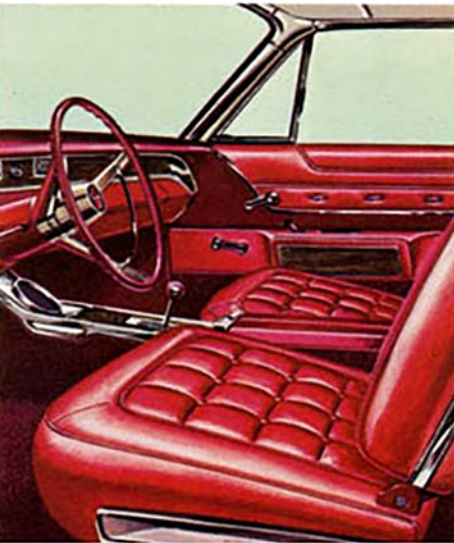


*New Yorker 4-Door Town Sedan*



*New Yorker 2-Door Hardtop*

Side window glass curves gracefully to complement the smooth flowing lines. Notice that Hardtop models have an exclusive vinyl side panel treatment. Inside, the combination of rich vinyls and satiny jacquards are pleasing to the touch. The instrument panel is impressively simple in appearance, enhanced by a rich wood-grained insert. Top is padded for safety and to eliminate glare. Inside the glove compartment are a series of carefully-chosen convenience accessories that include a hidden tissue dispenser, a handy sliding tray to keep maps and manuals in order and easy to reach, and cup recesses on the inside of the compartment door. As a special convenience for those who drive on toll bridges and pay-as-you-go thruways, and for feeding hungry parking meters, there is a coin-holder built into the centre-panel ashtray drawer. These thoughtful touches are typical of the easy grace that marks the Chrysler way of life.







Saratoga 300 4-Door Hardtop



Saratoga 300 2-Door Hardtop



Saratoga 300 4-Door Sedan

## CHRYSLER SARATOGA 300

For 1965, the Saratoga 300 series is a prime example of the excellence of the Chrysler way of life. Clearly a Chrysler, the Saratoga 300 has a distinctive air of its own . . . it seems to exude a quiet pride that every Saratoga 300 owner is

bound to share. From the handsome grille, that features the traditional Saratoga 300 star pattern, to the deftly-designed concave recess at the end of the rear deck, this is a motor car that carries quality in every line. Impec-

cably-crafted stainless steel mouldings enhance the long, racy look of the graceful body design. Its curved side glass contributes to Saratoga's custom-coordinated beauty. Thanks to remarkable achievements in suspension and

seat design, a ride in a 1965 Saratoga 300 is a rewarding experience in comfort. Truly, Saratoga 300 brings you all the benefits of the Chrysler way of life . . . in its own distinctive way. Test it once, and you'll agree.

Whether you choose the elegant 4-Door Sedan, or either of the dashing Hardtops, Saratoga 300 offers you a high level of painstaking quality. The powerful 383-cu. in. V-8 engine delivers top performance under any driving conditions and for flashing extra power there is the optional 383 cu. in. V-8 with power pak. The Torque-Flite automatic transmission is controlled by a convenient column-mounted gear selector lever, with the position indicator on the dash. On hardtops, a floor mounted console gear selector is available. Like all Chrysler models, the Saratoga 300 has an exceptionally roomy interior . . . room to spare!







Windsor Convertible

## CHRYSLER WINDSOR

The Windsor series is the down-to-earth exponent of the Chrysler way of life . . . the one that proves you can enjoy the best in motoring value at a modest price. And yet, while Windsor's price is modest, the car itself has the same high level of styling, the same

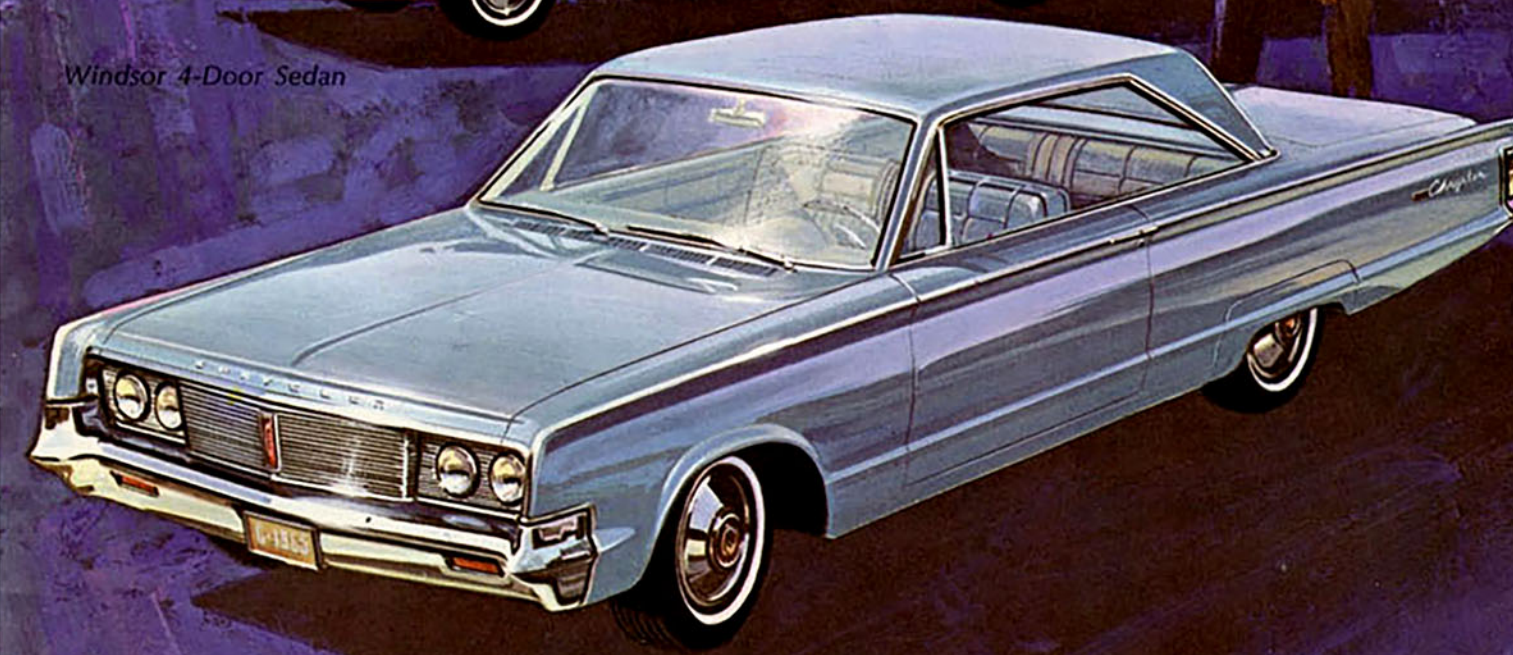
quality construction, and most of the features and convenience touches that distinguish every other fine Chrysler series. Just drive a Windsor once and you'll be convinced that here is a truly fine automobile you'll be proud to own . . . proud to drive.



Windsor 4-Door Hardtop



Windsor 4-Door Sedan



Windsor 2-Door Hardtop

Inside, all the Windsor series offer the spaciousness and feeling of big car luxury that is a Chrysler hallmark. Distinctive styling and elegant fabric-vinyl combinations not only delight the eyes, but provide lasting durability. Model choice in the Windsor provides a wide range of versatility and value. You can pick from the youthful Convertible, the impressive 4-Door Sedan, and either of the two elegant Hardtops. Also, there's the spacious Station Wagon, that is as practical as it is beautiful. In any model, Windsor brings you the best of the Chrysler way of life . . . at a price that makes it easy to move up to Chrysler.



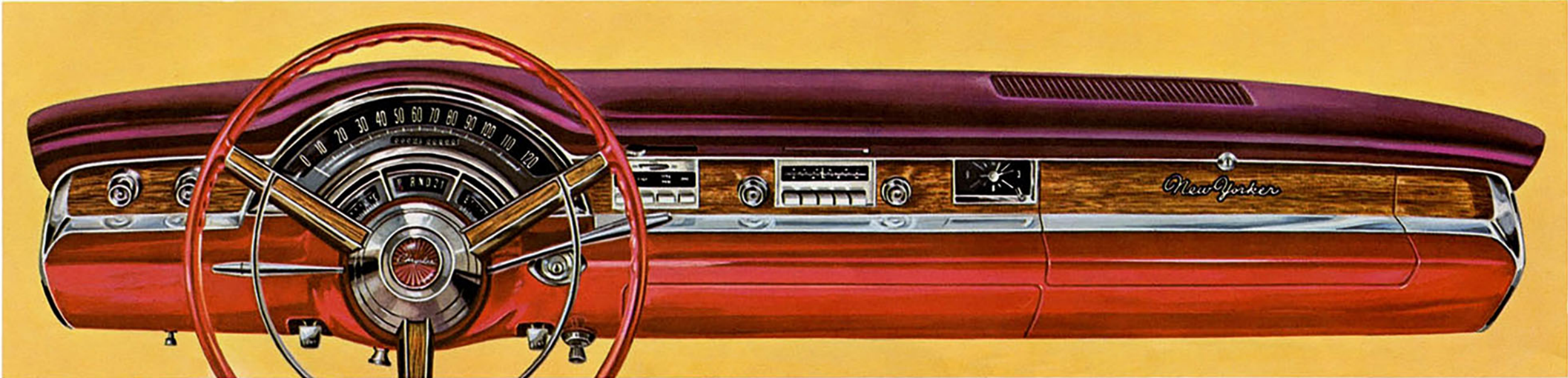
Windsor Station Wagon



# ENGINEERING FEATURES

## 5-YEAR—50,000-MILE POWER-TRAIN WARRANTY

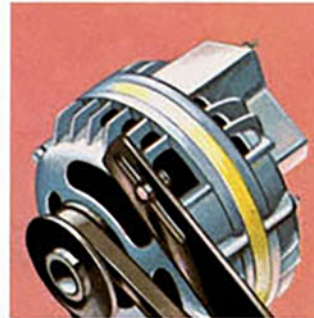
Chrysler's famous Power-Train Warranty — unique in the Canadian automotive industry — tells you two important things about Chrysler people: the confidence they have in the way their products are built and the concern they feel for those who buy their products. This Warranty means exactly what it says: if any major power-train component (and this includes the engine block, head and all internal engine parts, transmission case and internal parts, drive shaft, rear axle and universal joints) is found to be defective within 5 years or 50,000 driving miles your Chrysler dealer will see that you get a prompt repair or replacement, without cost. You don't even pay for the labour costs! Your Chrysler dealer has full details. See him soon.



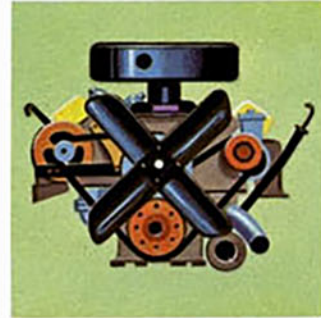
Chrysler instrument panels are impressive and good looking, featuring an arrow-straight brow with a slight arc over the dial

cluster. Their design is one of functional simplicity that provides driver and passenger convenience second to none. Shown

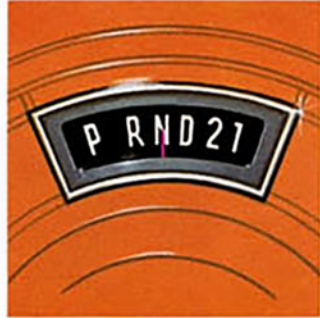
above is the New Yorker instrument panel which is highlighted by a wood-grain pattern insert. A truly beautiful panel.



New refinements mean steadier power from Chrysler's dependable Alternator.



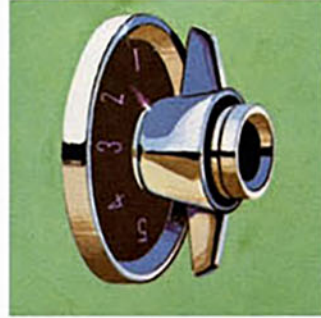
Muscular V-8 power plants give all Chryslers their "get up and go". See specifications (opposite) for details.



Automatic transmissions feature column-mounted gear selector lever for convenience and simplicity.



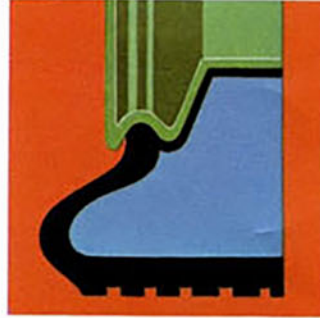
Optional tilt steering wheel (available with power steering), adjusts to 7 positions — even while you drive!



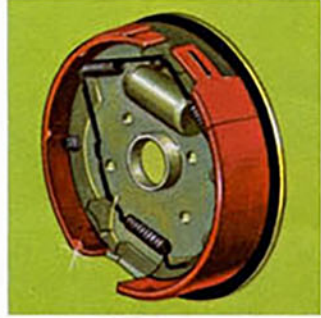
Optional "Auto Pilot" speed control makes long-distance driving less of a strain — simply set control for a given speed and relax!



Crank operated window vents are easy to open and close . . . ensure proper ventilation at all times.



Exclusive Safety-Rim wheels hold tires in place even after a blowout, ensure safe, sure emergency stops.



Self Adjusting Brakes, (just back up, touch the brake pedal — brakes adjust automatically, safely.)

The engineering highlights shown here (and spelled out in detail on the page opposite) are typical examples of the unending quest for quality that underlies the design and building of all Chrysler automobiles. While many are brand-new this year, even these have been subjected to

relentless testing so that by the time they reach you they are as thoroughly proven as designs and devices that have had years of actual driving service. The end result is a high level of quality — a combination of reliability and serviceability that lets you take for granted a kind of carefree driving

that few other cars can provide. It means that you can buy and drive a Chrysler with confidence . . . with the assurance that your investment is safely protected by the reputation of Chrysler engineers and craftsmen for designing and building quality products.

## NOTES

## '65 CHRYSLER STANDARD EQUIPMENT

### CHRYSLER WINDSOR STANDARD EQUIPMENT

361 cu. in. V-8 engine • Torque-Flite column-mounted control 3-speed automatic transmission • Arm rests — front and rear • Ash receivers front and rear • Cigar lighter • Illuminated electric clock • Colour-keyed floor carpeting • Heater and defroster • Instrument panel safety cushion • Back-up lights • Courtesy lights • Glove Box light • Illuminated Transmission selector lever quadrant • Trunk light • Illuminated Oil pressure dial • Electric Convertible top lift • Front seat safety belts with retractors • Wheel covers • Parallel action, variable-speed windshield wipers • Removable rear wheel fender skirts • Built-in inside cowl ventilators • New unitized body structure • Crank operated vent windows • Full length body side mouldings • Strainless drip moulding cover • Front and rear bumper outline

mouldings • 32,000-mile interval lubrication • 4,000-mile/3 month oil change intervals • 5-year or 50,000-mile power-train warranty • 12 month or 12,000-mile general warranty.

### CHRYSLER SARATOGA 300 STANDARD EQUIPMENT

Includes most of the Windsor standard equipment items plus the following: 383 cu. in. V-8 engine • Power steering (mandatory option) • Distinctive 300 grille • Full-length Chrome-flashed stainless steel mouldings • Door mouldings on sedans • Belt-line mouldings on hardtops • Front wheel opening moulding • Lower rear deck applique.

### CHRYSLER NEW YORKER STANDARD EQUIPMENT

Includes all of the Windsor and Saratoga 300 items plus the following: 413 cu. in. V-8 engine • Exclusive New Yorker grille • Fender-mounted turn signals •

Prismatic driving mirror • Outside remote-control rear view mirror • Power brakes • Power steering • Undercoating and hood silencer • Windshield washers • Rear-door arm-rest ash receivers—(4 door models, bucket seats) • Front-seat-back ash receiver and cigar lighter — 4 door models (bench seat) • Front bumper guards • Carpeted floor covering in luggage compartment • Distinctive tail lamp lenses • Wood-grained vinyl insert on instrument panel face • Carpeting on lower portions of door panel • Walnut wood grain vinyl over arm rest treatment • Centre arm rests • Full vinyl roof covering for six window town sedan • Colour-keyed padded vinyl roof pillar and roof mouldings for hardtops • Distinctive aluminum applique and moulding on rear deck, full length lower body textured stainless steel plate moulding.

## '65 CHRYSLER SPECIFICATIONS

**BRAKES:** Self-Adjusting — Servo-Contact — Self-Energizing with bonded linings. Drum diameters: 11" on all models. Power brakes standard on New Yorker: available at extra cost on Windsor and Saratoga 300 models.

**COOLING SYSTEM:** Thermostatic by-pass control. Pressure vent radiator cap. Coolant capacity 14.1 Imperial quarts.

**DIMENSIONS:** Wheelbase: Windsor, Saratoga 300, and New Yorker 124.0", Station Wagons 121.0". Overall length: all models 218.2", Station Wagons 219.0". Width all models including station wagons 79.5". Tread: all models including station wagons — front 62.0", rear 60.7".

**DRIVE:** Hotchkiss drive through rear springs. Hypoid flanged rear axle with 2.76 to 1 ratio all models.

**ELECTRICAL SYSTEM:** Battery: 12 volt, 66-plate, 59-amp-hr. on Windsor; 12 volt, 78-plate, 70-amp-hr. on Saratoga 300 and New Yorker. Leak-proof battery cover standard on all models. 37 amp. alternator on all models. Waterproof ignition, electric windshield wipers and directional signals. Starter motor with 5-roller clutch provides high torque capacity.

**ENGINES:** V-8, 90-degree. Bore;-stroke and displacement. Windsor — 4.12 x 3.38, 361 cubic inches; Saratoga 300 — 4.25 x 3.38, 383 cubic inches; New Yorker — 4.19 x 3.75, 413 cubic inches. Compression ratio: Windsor 9.0 to 1; Saratoga 300, 10.0 to 1; New Yorker 10.1 to 1. Horsepower: Windsor — 265; Saratoga 300 — 305; New Yorker — 340. Hi-performance 383 cu. in. engine with 4-barrel carburetor and dual exhausts available as an option on Windsor and Saratoga 300.

**FUEL SYSTEM:** Carburetors, dual down-draft on Windsor and Saratoga 300, four-barrel down-draft on New Yorker. Automatic intake manifold heat control, automatic choke, dual filtration units. Fuel capacity — 20.8 Imperial gallons. (18.3 Imperial gallons for station wagons)

**STEERING:** Low effort manual, with recirculating ball steering gear, standard on Windsor. Constant-control power steering with quick 3 1/2 turns lock-to-lock, standard on New Yorker, mandatory option on Saratoga 300 and optional on Windsor.

**SUSPENSION:** Time-tested Torsion-AIRE suspension. Front ball-joint pivots and high chrome steel torsion bars in front, extended leaf springs at rear, with sway bars and oriflow shock absorbers mounted vertically at each wheel.

**TRANSMISSIONS:** Column-mounted control Torque-Flite, fully automatic torque converter with 3-speed gear set, standard. Certain models have special optional packages that include floor-mounted gear selector for automatic transmission.

**WHEELS AND TIRES:** Safety Rim Wheels. Standard low-profile tire sizes: Windsor 8.25 x 14; Saratoga 300 and New Yorker 8.55 x 14.

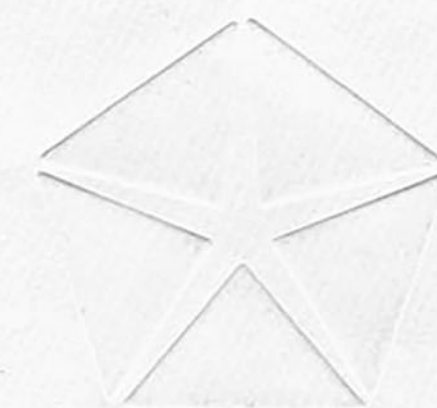
**EVERY CHRYSLER IS WARRANTED FOR 5 YEARS OR 50,000 MILES (WHICHEVER FIRST OCCURS) FOR MAJOR POWER-TRAIN COMPONENTS, IN ADDITION TO NORMAL 12-MONTH OR 12,000-MILE (WHICHEVER FIRST OCCURS) WARRANTY. YOUR DEALER HAS FULL DETAILS.**

NOTE: Constant improvement of its products requires Chrysler Canada Ltd., to reserve the right to change prices, specifications and standard equipment without obligation, from time to time, and without notice. Certain special equipment is shown on the vehicles illustrated in this catalogue but your local dealer will gladly advise you of those items that are standard. Every Chrysler is warranted for 5 years or 50,000 miles (whichever occurs first) for major Power-Train Components, in addition to the normal 12-month or 12,000 mile (whichever first occurs) warranty. Your dealer has full details.









# 1965 CHRYSLER

WINDSOR • SARATOGA 300 • NEW YORKER