

money saving

facts

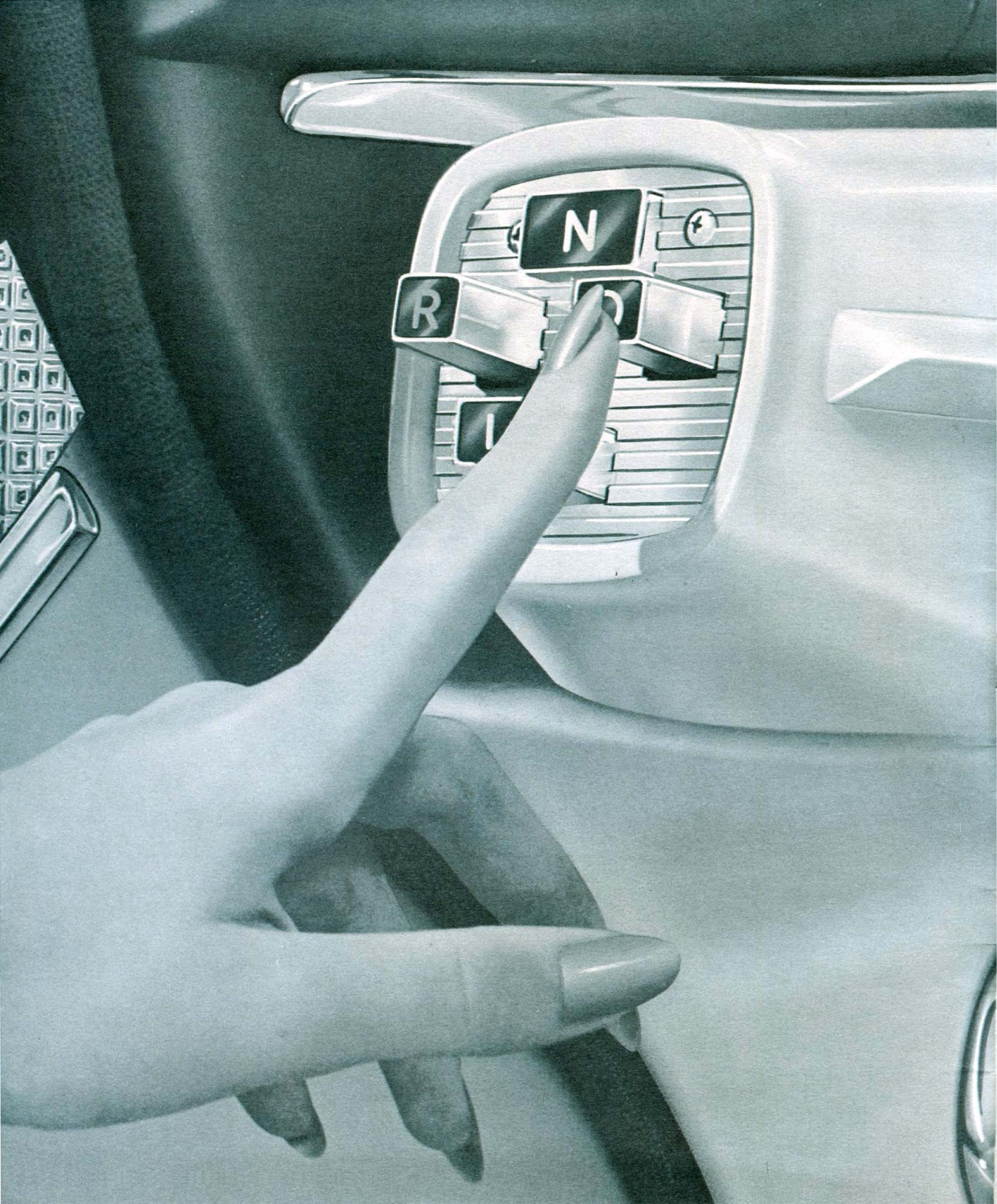
about the '56 DODGE



Value Leader of The Forward Look in . . .

“BREAK-AWAY” POWER

● FEATURES ● PERFORMANCE ● STYLE



Now . . . the exciting touch of tomorrow in

NEW DODGE MAGIC TOUCH CONTROL*

that brings you push-button driving!

The day of push-button driving is here!

And it comes to you in the big new '56 Dodge, as one more brilliant reward of Dodge success in the beautiful car born for success!

Here is the newest, most modern, most effortless driving feature ever designed . . . so advanced that it makes all other concepts of shifting obsolete, even the so-called "automatics."

Imagine! The new Dodge Magic Touch

Control lets you "tune in" all the ranges of Dodge PowerFlite automatic driving with a touch of your finger . . . just as easily and simply as you'd press a push button on your car radio! No more levers to pull or push.

Located on the Flite-Styled control panel, Dodge Magic Touch Control is within easy and instant reach of your fingertips. Just press the "Drive" button and command the ultimate in automatic driving . . . Dodge fully-automatic PowerFlite drive.

ASK YOUR DODGE DEALER TO DEMONSTRATE NEW MAGIC TOUCH CONTROL!

**Optional equipment, at extra cost.*

Now . . . thrilling new Dodge *BREAK-AWAY POWER!*

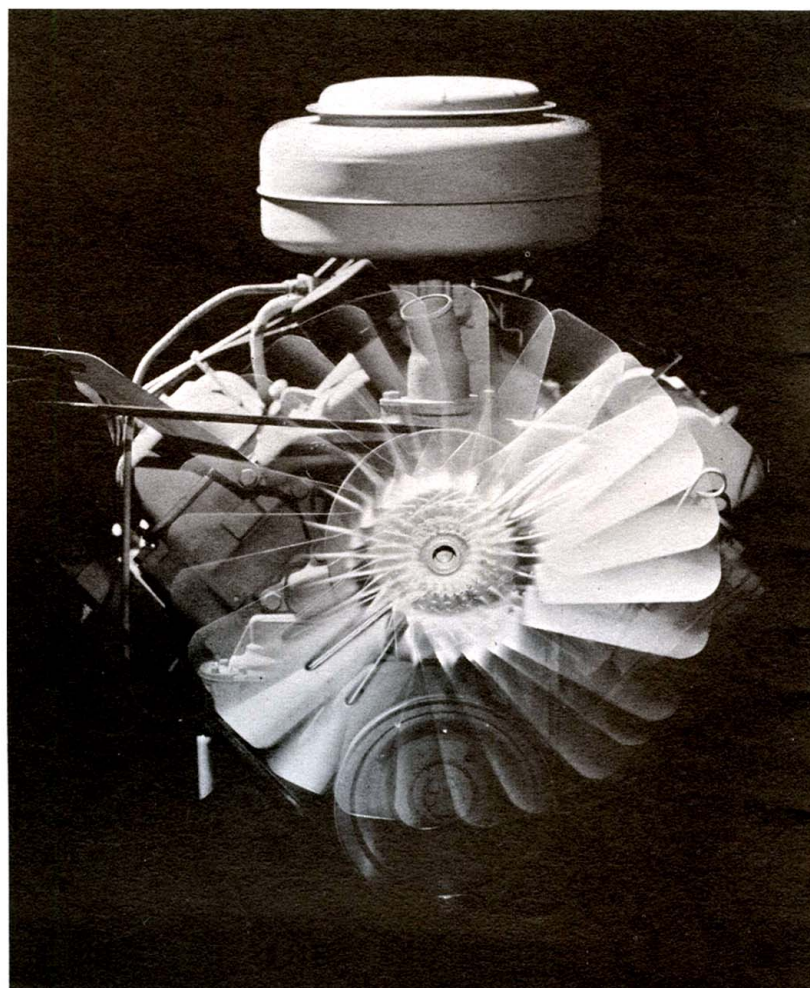
New Advanced Aircraft-Type

Super-Powered Super Red Ram V-8

Practically *everything* about the big new 1956 Dodge makes exciting headline news . . . the style, the glamour, the years-ahead features and certainly the flashing *Break-Away Power*.

For this year, Dodge introduces the latest, most improved, surging V-8 engine of all . . . the great aircraft-type *Super-Powered Super Red Ram V-8!*

This brilliant, optionally-installed powerhouse delivers a spectacular combination of get-away thrust and sustained power. It is especially equipped with a 4-barrel carburetor, dual exhaust system, special manifolding, distributor and vibration dampener and is available on all Dodge V-8 models.



More aircraft-type power . . . economy, too

SUPER RED RAM V-8 ENGINE

Yours to command in the brawny new Super Red Ram V-8 engine is surging new *thrust* . . . flashing *break-away* . . . plus the extra performance rewards of aircraft design principles.

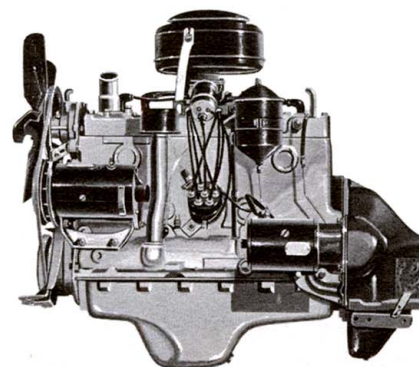
Advanced engineering features include: improved combustion and idling, increased compression ratio to 8.0 to 1 and long-reach spark plugs, to name a few.

The Super Red Ram brings to the magnificent Dodge Custom Royal and Royal series the increased power required for modern driving, along with remarkable economy of operation.

FAMOUS DODGE "GET-AWAY SIX"!

The one and only Dodge "Get-Away Six" flashes ahead for '56 . . . to challenge every engine of its type with power-packed performance. Here is the engine that has never been equalled by any power plant of its kind for out-and-out trouble-free performance or for dependability.

Now, new engineering advances, including a higher compression ratio, wring more miles from each tank of regular gas, put more *out-front* action in this dynamo of the Dodge Coronet six Series!

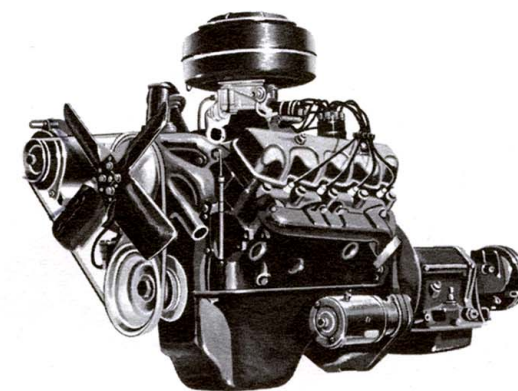


Stepped up in power!

RED RAM V-8 ENGINE

More "get up and go" in tune with today's driving demands. More fuel savings, more *thrust* and efficiency with regular gas, yours with the stepped-up, improved Red Ram V-8 engine!

Now you reap the rewards of magnificent engineering refinements of the Dodge advanced aircraft-design principles . . . researched by Dodge engineers, tested, *thoroughly proved* and presented to you in the Dodge Coronet V-8 Series, long associated with record-breaking performance.



NEW TWIN-LIGHTNING 12-VOLT SYSTEM

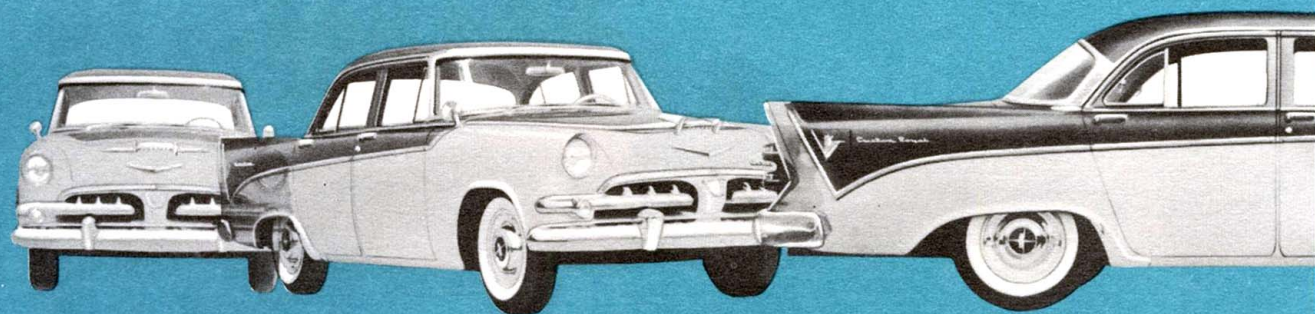
*Now standard on
all '56 Dodge cars*



For 1956 Dodge introduces a superior new 12-volt system to assure more than ample electrical reserve for this great new forward-looking car.

Teamed with the stepped-up performance of advanced Dodge engines, the 12-volt system will assure still more operating efficiency and dependability, including faster starts in cold weather, greater generating capacity and better firing of spark plugs at all times.

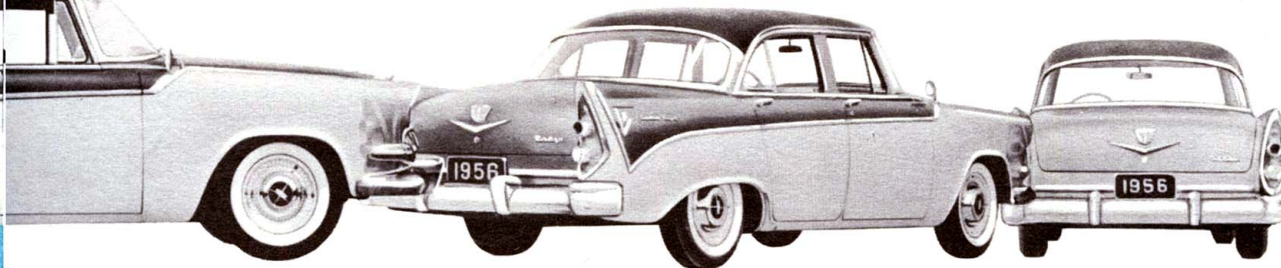
Thrilling Forward-Flair styling reflects success...



SPECTACULAR Sweep-Saddles herald a thrilling new concept in car styling with daring flair that commands attention whether this magnificent car is viewed head-on, from the sides or rear.

LONG, LOW wide Dodge lines break away dramatically from all that's dull and stodgy, create a sleek, dramatic trend-setting silhouette that challenges the future by its very design.

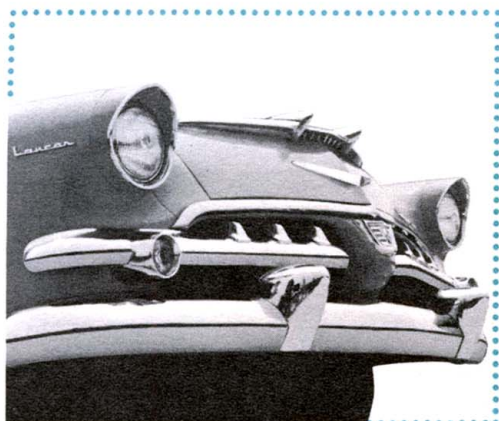
YOURS and DODGE



SEE the length of this exciting new Dodge . . . 212 inches from bumper to bumper! So impressively big! Yet Dodge prices start below cars that are far smaller and offer less!

AGAIN DODGE brings you new three-tone styling, and in colors chosen by the Dodge Panel of Fashion. Baked enamel finish locks the lustre in.

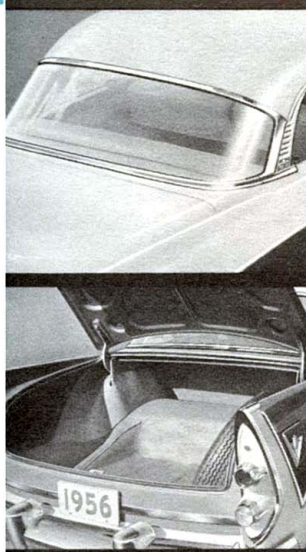
BENEATH THE exciting lines is a sturdy, all-steel Dodge body for a smoother, safer ride. New 4-Door Lancer hardtop styling eliminates the center post, yet retains steel roof.



LOWER, WIDER, more massive front and gleaming bumper-grille seem to surge forward in eager action even while the new Dodge is standing at the curb. Note such special style details as the clean, sharp headlamp bezels that add extra length and beauty to the sloping hood.



FLASHING NEW Dodge Jet Fins flare back to the stunning taillight assembly, create the most distinguished rear section of any car on the road. Bold color panels, striking chrome accents and regal V-Crest set the '56 Dodge in a class apart as the car "born of success to challenge the future!"



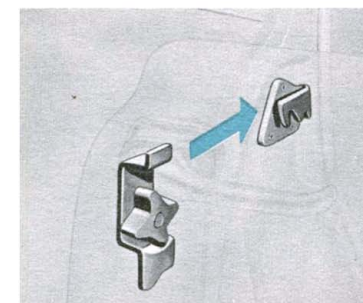
REAR window is huge, yet deftly styled into the sleek over-all Dodge lines. You see all the road behind you, and both rear fenders through the rear-view mirror.

LUGGAGE compartment is especially spacious—real family-size! Tight seal protects inside from dust, rain. Spare tire stands upright, out of way.

NEW Horizon windshield is *full* wrap-around, top and bottom, giving completely free vision from the driver's seat. Posts slant far back of the edge of roof.



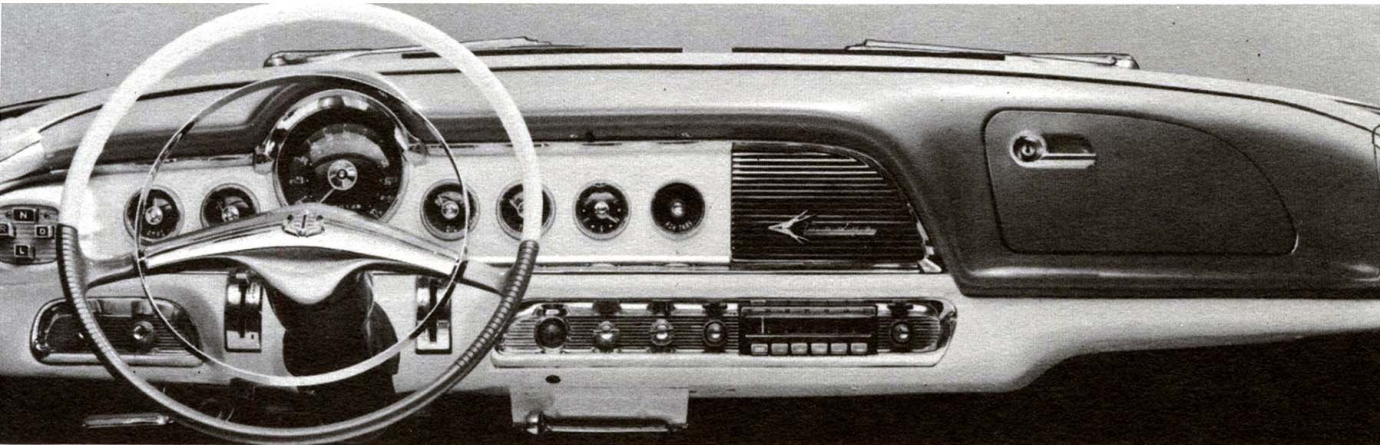
SWING-OUT Door Handles literally *pivot* at end for extra easy, convenient opening.



SAFETY Latch-Lock Doors cannot jiggle loose or open; are held firmly closed with ingeniously designed steel lock-type "teeth."

New interior comfort and luxury...

more rewards of Dodge success!



STEERING wheel in two-tone plastic is styled for right height, easy driving, relaxed grip. Horn won't sound with ignition off, a good feature when youngsters are in car.

NEW flite-styled Control Panel is color-harmonized with interiors. All instruments are scientifically grouped to be within instant sight or reach, the way a pilot can see his controls. Stunning color bar underscores roominess inside the '56 Dodge.

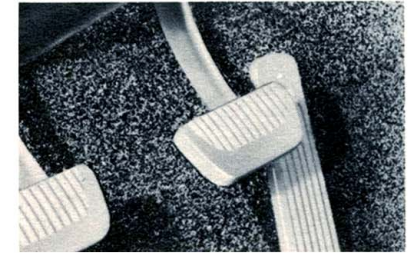


New Highway Hi-Fi Record Player

Exciting! Different! New! Now you can take the world's finest records with you wherever you go, on specially designed 16 $\frac{2}{3}$ RPM records that play from forty-five to sixty minutes on each side. Needle will not slip—even on bumpy roads. The magnificent hi-fidelity tone plays over your car speaker. Each Highway Hi-Fi set comes with six recordings and record catalog. Available as optional equipment.

Special Coronet DeLuxe Trim Group

If you wish, here is an especially-selected group of extra-beauty items, designed to give lovely Dodge Coronet interiors a still more exciting "custom" look. Group includes: door panels and mouldings, stunning carpeting in harmonizing color, seat side shield mouldings, embossed seat back bolsters and trunk side liners. *An outstanding Dodge value in optional equipment at slight extra cost.*



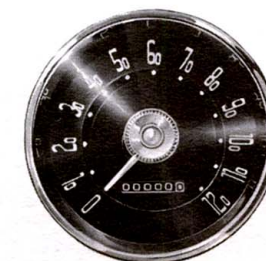
THE BRAKE pedal is suspended from the instrument panel for greater braking convenience and easier maintenance of the car interior. On models equipped with PowerFlite Drive, an extra-wide brake pedal permits left- or right-foot braking.



NEW DODGE exterior lines are sleek, taut and low, yet even the tallest passengers ride in new comfort and ease inside. Big wide seats have the deep, cushiony feel found in the finest furniture.



INSTRUMENT dials feature sharp, easy-to-read numerals against contrasting background. No straining to see mileage, gas, temperature, speed, or time of day.



LUXURY interior style touches include stunning two-tone Cordagrain (soft as leather) in "Panel Perfect" color combinations, beautiful chrome accessories, and the newest in Mylar panelling that gleams like sterling, as shown here on the Dodge Custom Royal Lancer V-8.

Thrill to America's most beautiful fabrics and colors

Gay new colors chosen by famous

Dodge Panel of Fashion

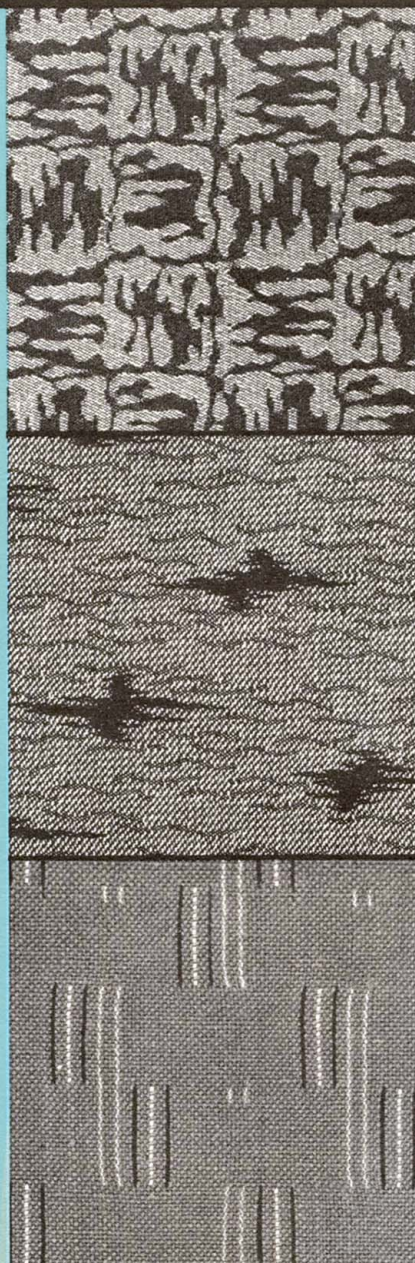


Even the Dodge colors are new! Fresh, imaginative and as modern as tomorrow, they are the personal choice of the special Dodge Panel of Fashion—top color experts in America—who selected from hundreds of colors and blended them into a brilliant array of hues that keynotes today's emphasis on multi-color styling. Now the "coming" colors in America's homes, America's fabrics and fashions are here in the beautiful new Dodge.

See these brilliant new Dodge colors and their two- and three-tone combinations in the beautiful Sales Album at your Dodge Dealer's!

JEWEL BLACK
CHINESE ROSE
CROWN YELLOW
ORIENTAL CORAL
AQUAMARINE
ROYAL BLUE
NEPTUNE GREEN

JADE GREEN
SAPPHIRE WHITE
SEAFOAM GREEN
CLOUD GRAY
IRIDESCENT CHARCOAL
WEDGWOOD BLUE
GARNET



Sculptured Satin-Faced Twill in Jacquard

Rich, satiny surface, enhanced by abstract patterns in metallic thread. Luxurious and durable.

Embroidered Linen-Look in Jacquard

A smart casual look, captured in the looms of Jacquard, accented by sophisticated pattern in metallic thread embroidery.

Sparkling Brocade in Jacquard

A new Jacquard fabric in a stunning tailored weave, sparked with the subtle accent of a tiny metallic thread.

Whichever exciting Dodge exterior colors you choose, there is a color-harmonized interior to complement them in perfect taste. Custom Royal V-8 interiors, for example, feature Jacquard fabrics in silvery-black, blue or green, highlighted with Cordagrain. Deep pile carpets add to the custom styling.

The handsome Dodge Royal V-8 4-Door Sedan offers your choice of four harmonizing two-tone interior combinations in Jacquard fabrics: silvery-black, green, blue or red, contrasted with Cordagrain. Jacquard fabrics are famous for good looks and long-wearing properties through years of driving.

Dodge Coronet Sedan interiors feature inspired styling with patterned fabrics of Jacquard in blue, black, or green . . . with harmonizing Cordagrain bolsters that are wonderfully easy to keep clean, and as soft and fine to the touch as expensive leather.



behind the new beauty...

NEW

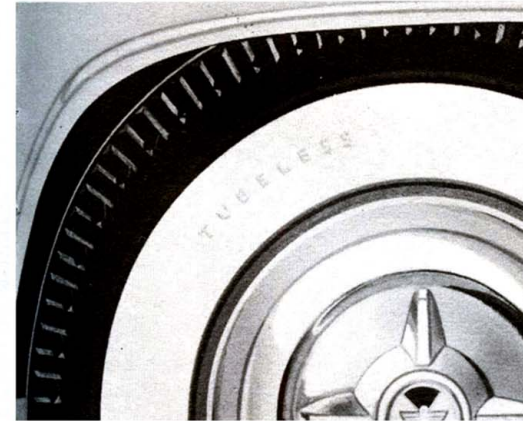
DEPENDABILITY

Again, the traditionally superior Dodge engineering is teamed with smart new Dodge styling to assure new highs in performance, dependability and smooth, trouble-free driving pleasure. Here are a few of the engineering advancements you will enjoy in the '56 Dodge, the "Success Car of the Year!"

Improved Shock Absorber Mounting
Sway Eliminator
Safe-Guard Hydraulic Brakes
Full Pressure Lubricating System
Improved Steering Gear
Oil-Bath Air Cleaner
Suspended Pedals

Independent Parking Brake
Welded Construction
Double-Channel Box-Section Frame
Insulated Body Mountings

Safety Rim Wheels
Tubeless Tires
Synchronized Springing
Full Hotchkiss Drive
Angle-Poised Shock Absorbers
Cyclebond Brake Linings



Tubeless Tires

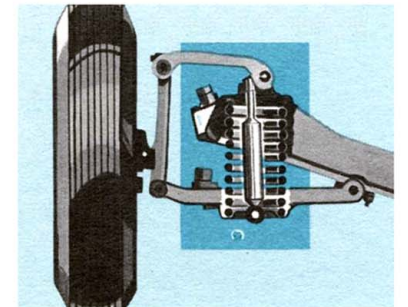
The added safety, convenience and long mileage of tubeless tires—yours as *standard equipment*. Virtually puncture-proof, they greatly reduce the chances of a blow-out. Usually can be repaired without removing wheel.

Safety-Rim Wheels

No extra cost for this extra protection! Safety-Rim Wheels assure a safe, controlled stop in case of a blow-out. A special edge on rim holds tire on wheel, prevents loss of control by driver.

Oriflow Ride Control

A softer, smoother ride! Front wheels are suspended independently. Oriflow shock absorbers are mounted within the coil springs for better coordination between the springs and the shock absorbers.



Independent Parking Brake

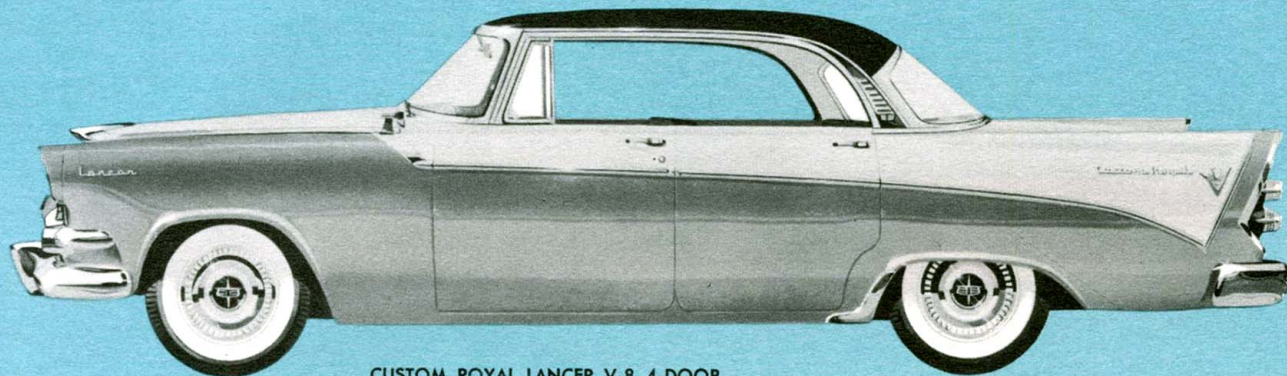
Exclusive with Dodge in its field! Gives you the extra protection of a second braking system. Operates independently of service brakes, and provides a reserve braking system you can call on in an emergency.



Available also as optional equipment are: Full-Time Power Steering, Safety Power Brakes, Power Window Lifts, 4-Way Power Seat.

THESE EXTRA-VALUE FEATURES *yours through Dodge success...* *at no extra cost*

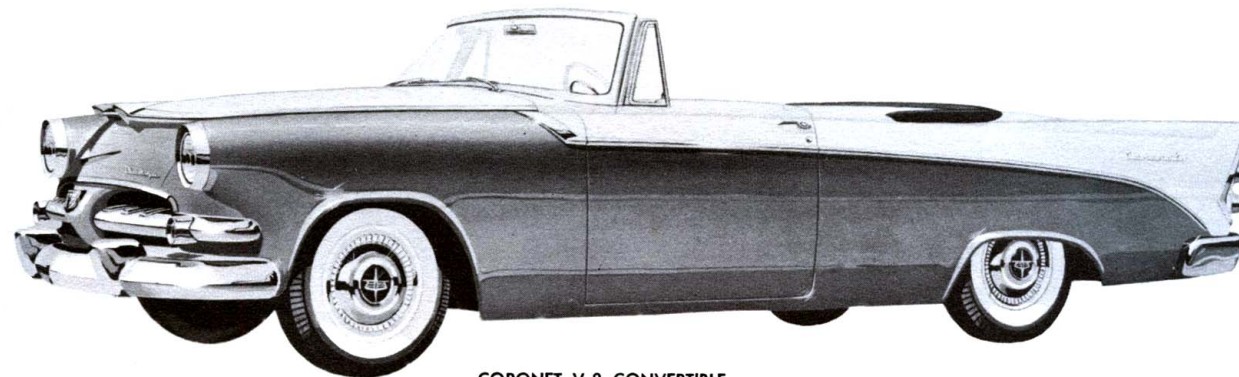
- Swept-Back Windshield
- Safety Rim Wheels
- Oriflow Shock Absorbers
- Tubeless Tires
- Twin-Lightning 12-Volt System
- Safety Latch-Lock Doors
- Swing-Out Door Handles
- Safe-Guard Hydraulic Brakes
- Cyclebond Brake Linings
- Safety Shield Cigar Lighter
- Electric Windshield Wipers
- Long-Reach Spark Plugs
- Ignition Key Starting
- Suspended Brake Pedal
- Jacquard Fabrics
- Baked Enamel Finish
- Chair-High Seats
- Foam Rubber Cushion Seats
- Independent Parking Brake
- Extra-Wide "Rudder Bar" Brake Pedal
- Screen Cowl Ventilator
- Extra-Large Luggage Compartment
- Torsion Bar Rear Trunk-Lid Spring
- Double Channel Box Section Frame



CUSTOM ROYAL LANCER V-8 4-DOOR

Now, look to Dodge again for style that makes heads turn, hearts yearn! Here, Dodge introduces the new Custom Royal V-8 4-Door Lancer, free of center posts for that hardtop flair, yet with all the advantages of a big closed-car, too. And at your command is the flashing "Break-Away" power of the Super-Powered Super Red Ram V-8.

Dodge Custom Royal V-8 Series
 Custom Royal Lancer V-8 4-Door
 Custom Royal Lancer V-8
 Custom Royal V-8 4-Door Sedan
 Custom Royal V-8 Convertible



CORONET V-8 CONVERTIBLE

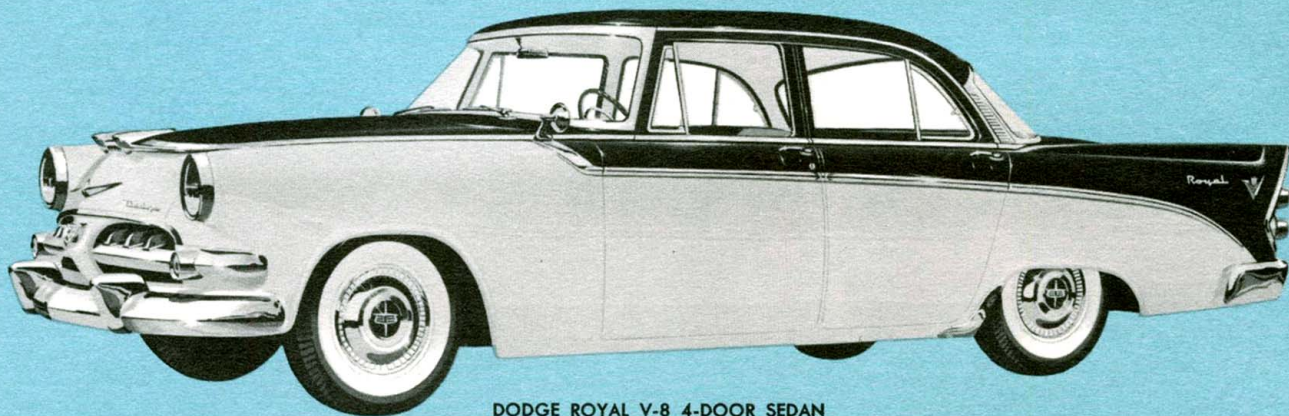
Now, a glamorous new convertible in the famous Dodge Coronet Series, with dashing style and racy lines to rival the most expensive sport cars, yet with an exciting price tag that falls among the lowest! Sleek trim lines, sweeping Jet Fins and the Red Ram V-8 engine invite you to take off for fun and share the rewards of Dodge success.

Dodge Coronet V-8 and SIX Series
 Coronet V-8 Convertible
 Coronet Lancer V-8 4-Door
 Coronet Lancer V-8
 Coronet V-8 4-Door Sedan
 (Also available as a SIX)
 Coronet V-8 Club Sedan
 (Also available as a SIX)

new '56 DODGE . . .

4 Gorgeous Style Series • 19 Beautiful Models

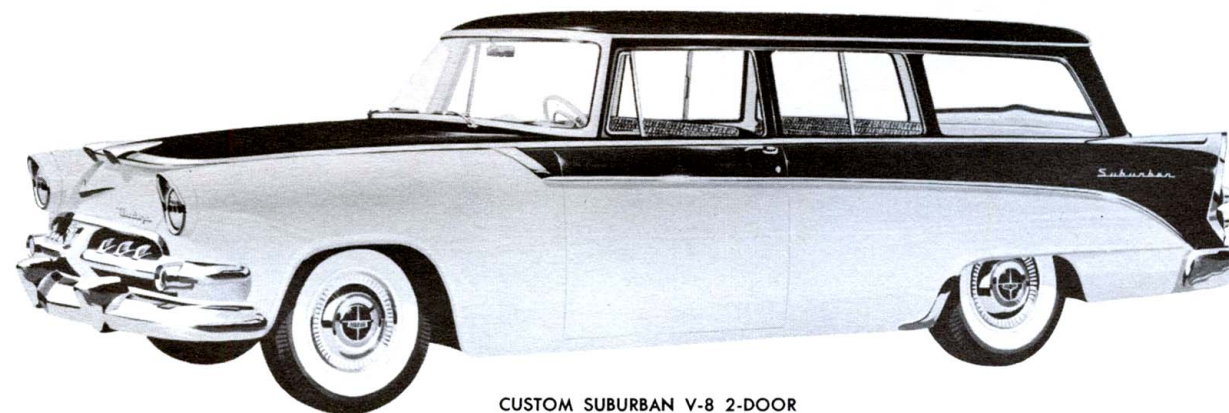
success car of the year



DODGE ROYAL V-8 4-DOOR SEDAN

Take the wheel and challenge the future! Up front is a big, stepped-up V-8 engine awaiting your command. Inside are luxury appointments, relaxing quiet, comfort ride . . . and room for all the family. For '56 let this distinguished evidence of Dodge success reflect your personal success, as well!

Dodge Royal V-8 Series
 Royal Lancer V-8 4-Door
 Royal Lancer V-8
 Royal V-8 4-Door Sedan



CUSTOM SUBURBAN V-8 2-DOOR

This dazzling Dodge Custom Suburban station wagon offers the utmost in trend-setting styling, flashing performance and smart, functional interiors. Powered by a brawny Super-Powered Super Red Ram V-8 engine, it carries six passengers or a husky load of freight with equal ease. Nothing can match it for glamour or utility . . . or the mark of success.

Dodge Station Wagons
 Custom Sierra V-8 4-Door, 6 and 8 passenger
 Sierra V-8 4-Door, 6 and 8 passenger
 Custom Suburban V-8 2-Door, 6-passenger
 Suburban V-8 2-Door, 6-passenger
 (Also available as a SIX)



SPECIFICATIONS

CUSTOM ROYAL V-8

ENGINES. *Super-Powered Super Red Ram V-8:* Especially equipped with 4-barrel carburetor, dual exhaust system, special manifold, distributor and vibration dampener. Available as optional equipment at extra cost. *Super Red Ram V-8:* Eight-cylinder, overhead valve, V-type. Compression ratio, 8.0 to 1. Bore, 3.63 in. Stroke, 3.80 in. Piston displacement, 315 cu. in. Rotary oil pump. Shunt-type oil filter. Oil capacity, 5 qts. Coolant capacity, 20 qts. (with heater, 21 qts.).

ELECTRICAL SYSTEM. 6-cell, 12-volt battery. 60 ampere hour capacity (50 AH in warm climates). High-capacity 30-ampere generator. Resistor spark plugs. Weatherproof ignition system. Variable-speed electric windshield wipers. Ballast-type ignition system; dual automatic spark control.

FUEL SYSTEM. Dual-downdraft carburetor. Heavy-duty, oil-bath air cleaner. Automatic choke. High-capacity fuel pump. Oilite fuel filter in fuel tank; ceramic filter at carburetor. Tank capacity, 17 gals.

CHASSIS. Double-channel, box-section frame. Independent front suspension with coil springs. Symmetrical idler arm steering system. Semi-elliptical grooved leaves in rear springs. Oriflow shock absorbers. Semi-floating Hypoid rear axle. Hotchkiss drive. Safe-Guard hydraulic brakes with Cyclebond lining. Safety-Rim wheels. Extra-low pressure tubeless tires, 7.60 x 15. Independent parking brake.

TRANSMISSIONS. PowerFlite Drive: fully-automatic transmission with torque converter and 2-speed planetary gear set. Automatic Overdrive: 2-speed planetary gear set with standard transmission. Easy-Shift Transmission: conventional 3-speed transmission.

DIMENSIONS: Four-Door Sedan: Wheelbase, 120 in. Overall length, 212 in. Overall width, 74.6 in. Overall height (loaded) 60.6 in. Overall loaded height of Hardtop, 60.1 in. Overall loaded height of Convertible, 60.3 in.

ROYAL V-8

ENGINES. *Super-Powered Super Red Ram V-8:* Especially equipped with 4-barrel carburetor, dual exhaust system, special manifold, distributor and vibration dampener. Available as optional equipment at extra cost. *Super Red Ram V-8:* Eight-cylinder, overhead valve, V-type. Compression ratio, 8.0 to 1. Bore, 3.63 in. Stroke, 3.80 in. Piston displacement, 315 cu. in. Rotary oil pump. Shunt-type oil filter. Oil capacity, 5 qts. Coolant capacity, 20 qts. (with heater, 21 qts.).

ELECTRICAL SYSTEM. 6-cell, 12-volt battery, 60 ampere hour capacity (50 AH in warm climates). High-capacity 30-ampere generator. Resistor spark plugs. Weatherproof ignition system. Variable-speed electric windshield wipers. Ballast-type ignition system; dual automatic spark control.

FUEL SYSTEM. Dual-downdraft carburetor. Heavy-duty, oil-bath air cleaner. Automatic choke. High-capacity fuel pump. Oilite fuel filter in fuel tank; ceramic filter at carburetor. Tank capacity, 17 gals.

CHASSIS. Double-channel, box-section frame. Independent front suspension with coil spring. Symmetrical idler arm steering system. Semi-elliptical grooved leaves in rear springs. Oriflow shock absorbers. Semi-floating Hypoid rear axle. Hotchkiss drive. Safe-

Guard hydraulic brakes with Cyclebond lining. Safety-Rim wheels. Extra-low pressure tubeless tires, 7.10 x 15. Independent parking brake.

TRANSMISSIONS. PowerFlite Drive: fully automatic transmission with torque converter and 2-speed planetary gear set. Automatic Overdrive: 2-speed planetary gear set with standard transmission. Easy-Shift Transmission: conventional 3-speed transmission.

DIMENSIONS: Four-Door Sedan: Wheelbase, 120 in. Overall length, 212 in. Overall width, 74.6 in. Overall height (loaded) 60.6 in. Overall loaded height of Hardtop, 59.8 in.

CORONET V-8 AND 6

ENGINES. *Super-Powered Super Red Ram V-8:* Especially equipped with 4-barrel carburetor, dual exhaust system, special manifold, distributor and vibration dampener. Available on V-8's as optional equipment at extra cost. *Red Ram V-8:* Eight-cylinder, overhead valve, V-type. Compression ratio, 8.0 to 1. Bore, 3.63 in. Stroke, 3.256 in. Piston displacement, 270 cu. in. Rotary oil pump. Shunt-type oil filter. Oil capacity, 5 qts. Coolant capacity, 19 qts. (with heater, 20 qts.). *"Get-Away Six":* Six-cylinder, L-head, in-line type. Compression ratio, 7.6 to 1. Bore, 3.25 in. Stroke, 4.63 in. Piston displacement, 230 cu. in. By-pass oil filter. Oil capacity, 5 qts. Coolant capacity, 13 qts. (with heater, 14 qts.).

ELECTRICAL SYSTEM. 6-cell, 12-volt battery. 50 ampere hour capacity (45 AH in warm climates). High-capacity 30-ampere generator. Resistor spark plugs. Weatherproof ignition system. Single-speed electric windshield wipers.

FUEL SYSTEM. Dual-downdraft carburetor. Heavy-duty, oil-bath air cleaner. Automatic choke. High-capacity fuel pump. Oilite fuel filter in fuel tank; ceramic filter at carburetor (V-8 only). Tank capacity, 17 gals.

CHASSIS. Double-channel, box-section frame. Independent front suspension with coil springs. Steering system: idler arm, equal tie rods (on V-8); long and short tie rods (on six). Semi-elliptical grooved leaves in rear springs. Oriflow shock absorbers. Hotchkiss drive. Safe-Guard hydraulic brakes with Cyclebond lining. Safety-Rim wheels. Extra-low pressure tubeless tires, 7.10 x 15 (on V-8) 6.70 x 15 (on six). Independent parking brake.

TRANSMISSIONS. PowerFlite Drive: fully-automatic transmission with torque converter and 2-speed planetary gear set. Automatic Overdrive: 2-speed planetary gear set with standard transmission. Easy-Shift Transmission: conventional 3-speed transmission.

DIMENSIONS: Four-Door Sedan: Wheelbase, 120 in. Overall length, 212 in. Overall width, 74.6 in. Overall height (loaded) 60.6 in. (V-8), 60.3 in. (six). Overall loaded height of Hardtop, 59.8 in. Overall loaded height of Convertible, 60.0 in.

FOR SPECIFICATIONS OF DODGE STATION WAGONS, SEE THE SPECIAL DODGE STATION WAGON BROCHURE

The policy of Dodge Division of Chrysler Corporation is one of continual improvement in design and manufacture wherever possible to assure a still finer car. Hence, specifications, equipment and prices are subject to change without notice.



SPECIFICATIONS

CUSTOM ROYAL V-8

ENGINES. *Super-Powered Super Red Ram V-8:* Especially equipped with 4-barrel carburetor, dual exhaust system, special manifold, distributor and vibration dampener. Available as optional equipment at extra cost. *Super Red Ram V-8:* Eight-cylinder, overhead valve, V-type. Compression ratio, 8.0 to 1. Bore, 3.63 in. Stroke, 3.80 in. Piston displacement, 315 cu. in. Rotary oil pump. Shunt-type oil filter. Oil capacity, 5 qts. Coolant capacity, 20 qts. (with heater, 21 qts.).

ELECTRICAL SYSTEM. 6-cell, 12-volt battery. 60 ampere hour capacity (50 AH in warm climates). High-capacity 30-ampere generator. Resistor spark plugs. Weatherproof ignition system. Variable-speed electric windshield wipers. Ballast-type ignition system; dual automatic spark control.

FUEL SYSTEM. Dual-downdraft carburetor. Heavy-duty, oil-bath air cleaner. Automatic choke. High-capacity fuel pump. Oilite fuel filter in fuel tank; ceramic filter at carburetor. Tank capacity, 17 gals.

CHASSIS. Double-channel, box-section frame. Independent front suspension with coil springs. Symmetrical idler arm steering system. Semi-elliptical grooved leaves in rear springs. Oriflow shock absorbers. Semi-floating Hypoid rear axle. Hotchkiss drive. Safe-Guard hydraulic brakes with Cyclebond lining. Safety-Rim wheels. Extra-low pressure tubeless tires, 7.60 x 15. Independent parking brake.

TRANSMISSIONS. PowerFlite Drive: fully-automatic transmission with torque convertor and 2-speed planetary gear set. Automatic Overdrive: 2-speed planetary gear set with standard transmission. Easy-Shift Transmission: conventional 3-speed transmission.

DIMENSIONS: Four-Door Sedan: Wheelbase, 120 in. Overall length, 212 in. Overall width, 74.6 in. Overall height (loaded) 60.6 in. Overall loaded height of Hardtop, 60.1 in. Overall loaded height of Convertible, 60.3 in.

ROYAL V-8

ENGINES. *Super-Powered Super Red Ram V-8:* Especially equipped with 4-barrel carburetor, dual exhaust system, special manifold, distributor and vibration dampener. Available as optional equipment at extra cost. *Super Red Ram V-8:* Eight-cylinder, overhead valve, V-type. Compression ratio, 8.0 to 1. Bore, 3.63 in. Stroke, 3.80 in. Piston displacement, 315 cu. in. Rotary oil pump. Shunt-type oil filter. Oil capacity, 5 qts. Coolant capacity, 20 qts. (with heater, 21 qts.).

ELECTRICAL SYSTEM. 6-cell, 12-volt battery, 60 ampere hour capacity (50 AH in warm climates). High-capacity 30-ampere generator. Resistor spark plugs. Weatherproof ignition system. Variable-speed electric windshield wipers. Ballast-type ignition system; dual automatic spark control.

FUEL SYSTEM. Dual-downdraft carburetor. Heavy-duty, oil-bath air cleaner. Automatic choke. High-capacity fuel pump. Oilite fuel filter in fuel tank; ceramic filter at carburetor. Tank capacity, 17 gals.

CHASSIS. Double-channel, box-section frame. Independent front suspension with coil spring. Symmetrical idler arm steering system. Semi-elliptical grooved leaves in rear springs. Oriflow shock absorbers. Semi-floating Hypoid rear axle. Hotchkiss drive. Safe-

Guard hydraulic brakes with Cyclebond lining. Safety-Rim wheels. Extra-low pressure tubeless tires, 7.10 x 15. Independent parking brake.

TRANSMISSIONS. PowerFlite Drive: fully automatic transmission with torque convertor and 2-speed planetary gear set. Automatic Overdrive: 2-speed planetary gear set with standard transmission. Easy-Shift Transmission: conventional 3-speed transmission.

DIMENSIONS: Four-Door Sedan: Wheelbase, 120 in. Overall length, 212 in. Overall width, 74.6 in. Overall height (loaded) 60.6 in. Overall loaded height of Hardtop, 59.8 in.

CORONET V-8 AND 6

ENGINES. *Super-Powered Super Red Ram V-8:* Especially equipped with 4-barrel carburetor, dual exhaust system, special manifold, distributor and vibration dampener. Available on V-8's as optional equipment at extra cost. *Red Ram V-8:* Eight-cylinder, overhead valve, V-type. Compression ratio, 8.0 to 1. Bore, 3.63 in. Stroke, 3.256 in. Piston displacement, 270 cu. in. Rotary oil pump. Shunt-type oil filter. Oil capacity, 5 qts. Coolant capacity, 19 qts. (with heater, 20 qts.). *"Get-Away Six":* Six-cylinder, L-head, in-line type. Compression ratio, 7.6 to 1. Bore, 3.25 in. Stroke, 4.63 in. Piston displacement, 230 cu. in. By-pass oil filter. Oil capacity, 5 qts. Coolant capacity, 13 qts. (with heater, 14 qts.).

ELECTRICAL SYSTEM. 6-cell, 12-volt battery. 50 ampere hour capacity (45 AH in warm climates). High-capacity 30-ampere generator. Resistor spark plugs. Weatherproof ignition system. Single-speed electric windshield wipers.

FUEL SYSTEM. Dual-downdraft carburetor. Heavy-duty, oil-bath air cleaner. Automatic choke. High-capacity fuel pump. Oilite fuel filter in fuel tank; ceramic filter at carburetor (V-8 only). Tank capacity, 17 gals.

CHASSIS. Double-channel, box-section frame. Independent front suspension with coil springs. Steering system: idler arm, equal tie rods (on V-8); long and short tie rods (on six). Semi-elliptical grooved leaves in rear springs. Oriflow shock absorbers. Hotchkiss drive. Safe-Guard hydraulic brakes with Cyclebond lining. Safety-Rim wheels. Extra-low pressure tubeless tires, 7.10 x 15 (on V-8) 6.70 x 15 (on six). Independent parking brake.

TRANSMISSIONS. PowerFlite Drive: fully-automatic transmission with torque convertor and 2-speed planetary gear set. Automatic Overdrive: 2-speed planetary gear set with standard transmission. Easy-Shift Transmission: conventional 3-speed transmission.

DIMENSIONS: Four-Door Sedan: Wheelbase, 120 in. Overall length, 212 in. Overall width, 74.6 in. Overall height (loaded) 60.6 in. (V-8), 60.3 in. (six.) Overall loaded height of Hardtop, 59.8 in. Overall loaded height of Convertible, 60.0 in.

FOR SPECIFICATIONS OF DODGE STATION WAGONS, SEE THE SPECIAL DODGE STATION WAGON BROCHURE

The policy of Dodge Division of Chrysler Corporation is one of continual improvement in design and manufacture wherever possible to assure a still finer car. Hence, specifications, equipment and prices are subject to change without notice.

money saving

facts

about the '56 DODGE



Value Leader of The Forward Look in . . .

"BREAK-AWAY" POWER

● FEATURES ● PERFORMANCE ● STYLE

DODGE DIVISION • CHRYSLER CORPORATION • DETROIT 31, MICHIGAN

Litho in U.S.A.