



This is Chevrolet's stylish economy car. It's designed to keep upkeep down and make you look good at the same time. So if this is what you want, read the Chevy II story from cover to cover and pick your favorite model.



'67 CHEVY II BY CHEVROLET



sports models

This is called the Nova Super Sport and a lot of it comes as standard equipment. Bucket seats, for example. Door-to-door carpeting. Plenty of extra styling touches. And you can put more than a bit of urgency in your going when you order one of the V8s that range up to 275 hp.

You'll have to admit, the greatest trick going is how Nova Super Sport can stand out as a belle of the ball and big-time saver, too. Looks for '67 put fresh excitement in the flagship of the Chevy II fleet. There's a bold new grille, exclusive SS mark, plus contoured fender lines that visor headlamps up front. Out back, large vista window overlooking new distinctive bright-metal trim running the width of the deck lid. In between, sweeping hardtop roof design, bright-metal wheel opening and side moldings, body side accent stripes and new wheel covers.

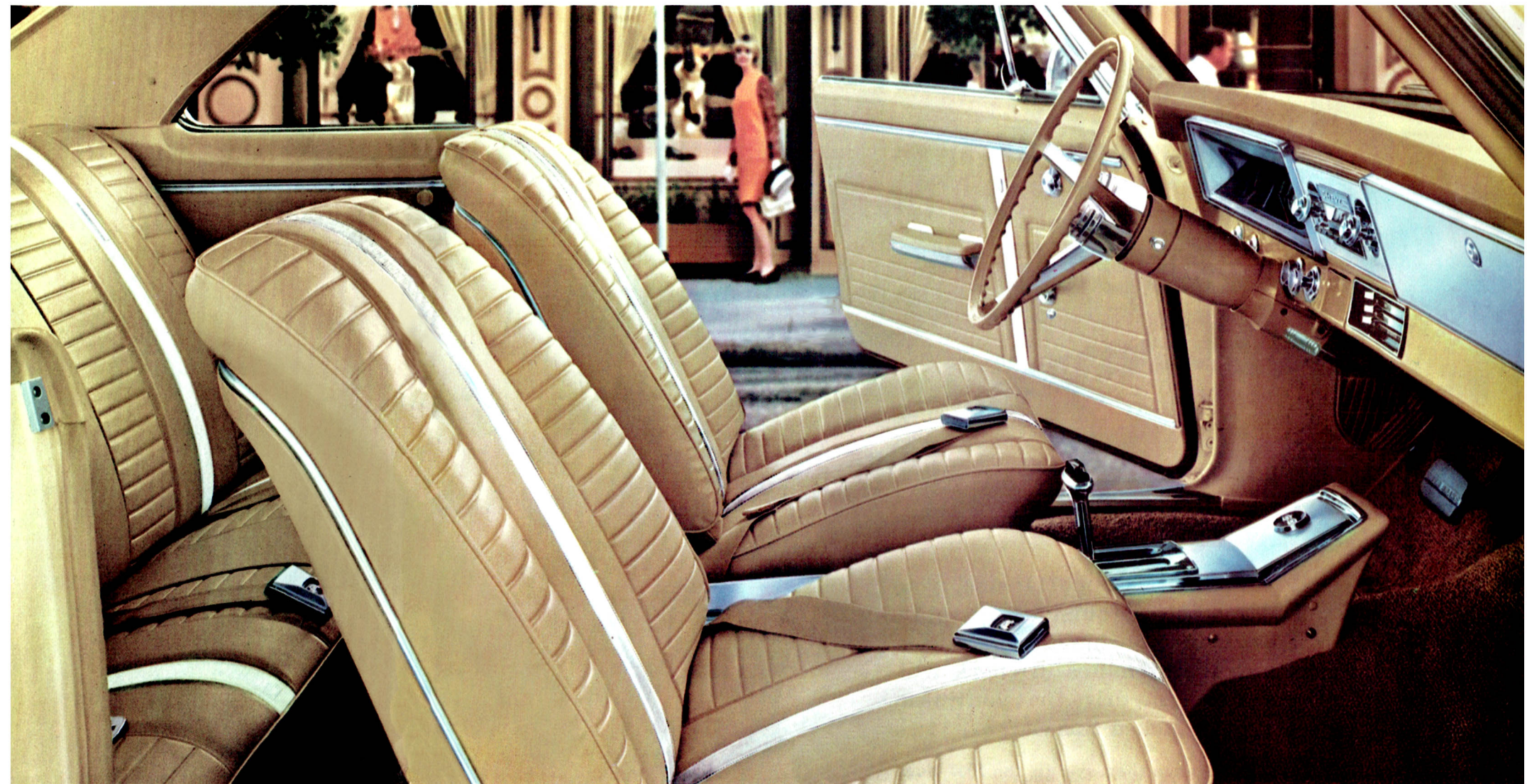
Where you sit, it's luxurious, sporty and colorful. Strato-bucket front seats are restyled with decorative appointments. So are the doors and the foam-cushioned rear seat. Cheerful all-vinyl interiors are in a choice of gold, black, red or bright blue, color-keyed, of course, to the exterior.

Then, too, deep-twist floor covering fit for a living room. New instrument panel control knobs, recessed instruments, SS identification. More plush touches: electric clock with sweep second hand and new three-spoke steering wheel.

On the safety side, Nova Super Sport, along with all Chevy IIs, has such safety features as thicker instrument panel padding, dual master cylinder brake system with warning light and four-way hazard flasher. See page 12 for all '67 safety items.

Lively is the spirit behind Nova Super Sport power. From the top: 275-hp Turbo-Fire 327 V8 on order. Or you might specify the new 155-hp Turbo-Thrift 250 Six. Standard engines are 195-hp Turbo-Fire 283 V8 or 120-hp Hi-Thrift 194 Six, depending on model version. Backing them up are three smooth, quiet transmissions. Column-mounted 3-Speed fully synchronized is standard. Order Powerglide automatic or 4-Speed fully synchronized and get floor-mounted shift in center console plate.

You can tailor a new Chevy II to your particular needs with the many Options and Custom Features shown and described in this catalog. A detailed list appears on pages 14 and 15.



Nova Super Sport Coupe interior in gold.



Shown on cover: Nova Super Sport Coupe in Bolero Red.

Nova Super Sport Coupe in Granada Gold.

sports models

How about this Nova Sport Coupe? Inside, you choose from 3 interior colors; outside, up to 15 Magic-Mirror shades. Its nimble handling qualities and the way it keeps maintenance in check will continually remind you as you drive that you chose wisely and well when you picked this car.

Your car dollar buys more elegance than ever in the 1967 Nova Sport Coupe. Interiors display new trim styling, fabrics and colors. Luxurious combinations of hexagon pattern cloth and vinyl seats are in choices of fawn and blue or extra-cost all-vinyl in black, keyed to exterior color. For the outside, 15 Magic-Mirror finishes to pick from—11 new ones for '67; new clean-lined styling of the grille, front fenders and bright metal trim.

More to like about the Nova Sport Coupe: deep-twist carpeting, door-activated interior and glove box lights, foam-cushioned front and rear seats, padded armrests all around, recessed instruments, blended-air heater and defroster with light-up controls, cigarette lighter, easily accessible front and rear ash-trays, back-up lights.

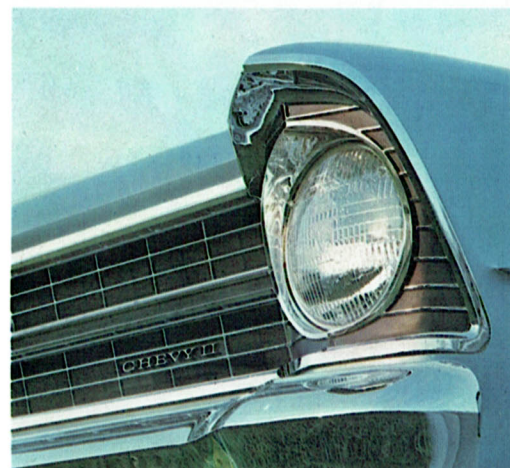
In handling and maneuverability, Nova Sport Coupe, like its brethren, is a master; makes driving and parking a finger exercise. Precise, easy steering for turnpikes or many-stop shopping is due to Chevy II low-friction steering system with Ball-Race steering gear. Ride is ever so smooth and stable because of husky coil springs up front, Mono-Plate single-leaf springs in the rear and double-action shock absorbers at every wheel.

Nova Sport Coupe and all Chevy IIs promise to be around for a long time with low upkeep. There are lots of reasons: unitized Body by Fisher, sealed to resist corrosion, insulated to help eliminate squeaks; self-adjusting Safety-Master brakes; long-life exhaust system and flush-and-dry rocker panels. Additional ones are listed on page 13.

Complete your driving pleasure by choosing from a wide assortment of Options and Custom Features available. Some are described and illustrated in this catalog. They are listed in more detail on pages 14 and 15.

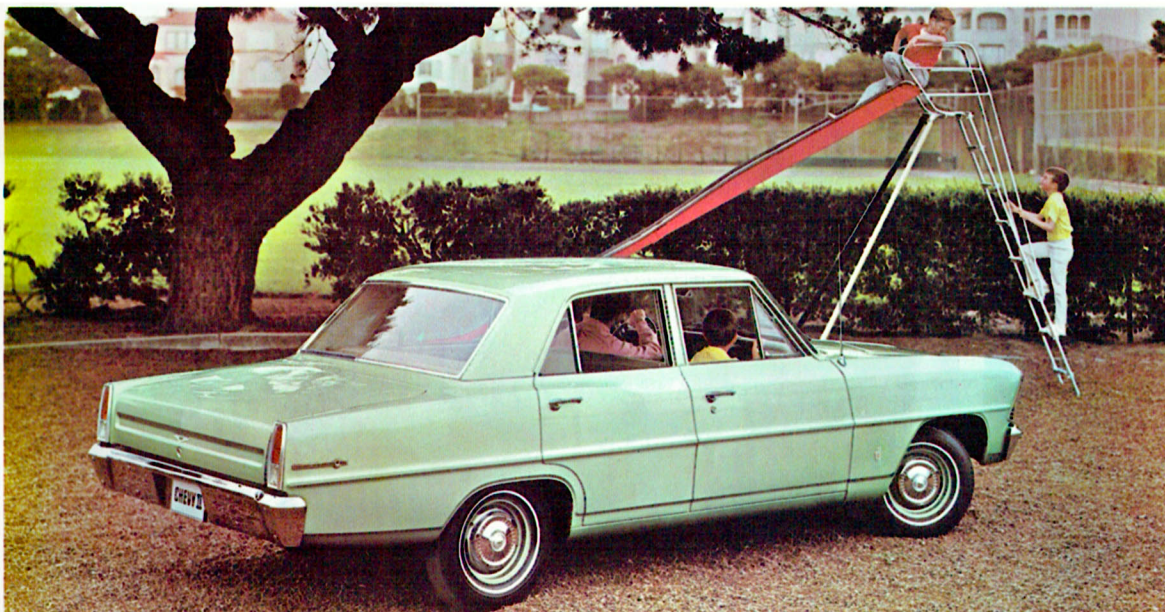


Above: Nova Sport Coupe in Marina Blue. Lower left: Distinctive new front fender styling with single-unit head-lights. Right: Energy-absorbing instrument panel with smooth contoured control knobs. Lower right: Floor-mounted shift lever for 4-Speed fully synchronized transmission. Far right: Nova Sport Coupe interior in blue.





Nova 4-Door Sedan in Emerald Turquoise.



Chevy II 100 4-Door Sedan in Mountain Green.



Chevy II 100 2-Door Sedan in Ermine White.

FAMILY SEDANS

Sedans come three ways: a 4-Door Nova model and 2- or 4-Door 100 choices. Look them over here and on the next two pages. A careful study will help you select the right Chevy II sedan.

Nova 4-Door Sedan. Always a pacesetter for those who think practical, the Nova Sedan is distinctively marked by black-accented bright metal side molding, sill molding, rear fender identification and bright metal roof trim. A new full-width grille is flanked by single-unit headlamps inset in restyled front fenders. You can add personal touches by specifying such items as power brakes and steering, Powerglide and Positraction.

Chevy II 100 4-Door Sedan. In family style, the 100 4-Door gives you entrances high and wide, room six passengers big and gilt-edged investment qualities such as Body by Fisher that pay off handsomely at trade-in. Throughout ownership, count on its being the quiet kind, with soundproofing in the floor, sidewalls, doors, roof, front and rear bulkheads. Depending on model, standard engines are 90-hp Four (100 Sedans only), 120-hp Six or 195-hp V8. A 275-hp V8 and new 155-hp Six are also available.

Chevy II 100 2-Door Sedan. Meet the "great deceiver." Who would imagine an outstanding contender for style and value could be Chevrolet's easiest to own? Easy to maintain, too, with features like self-adjusting Safety-Master brakes, flush-and-dry rocker panels and battery-saving Delcotron generator for starters. Something else you might not imagine: a 25-cubic-foot-plus trunk with low sill height for easy loading.

Order a Chevy II to suit your driving requirements exactly by picking from a raft of Options and Custom Features. Some appear and are described in this catalog. A more complete list is on pages 14 and 15.



Nova 4-Door Sedan interior in black.



Chevy II 100 4-Door Sedan interior in fawn.

SEDAN INTERIORS

Nova and Chevy II 100 Sedans give you plenty of good-to-haves—hip room, head room, shoulder room and leg room—all behind wide-opening doors. Standard safety items found on every Chevy II for 1967 include: lane-changing signals, padded sun visors, color-keyed front and rear seat belts with new pushbutton buckles, front seat belt retractors and a day/night inside rear-view mirror.

Nova Sedan interiors come in fresh decorator-designed pattern cloth with vinyl center and end panels. Four colors, fawn, blue, black and maroon, are keyed to exterior shades. Foam-cushioned front and rear seats, deep-twist carpeting and padded front and rear armrests all spell luxury for Nova Sedans. In the trunk, a luggage-protecting mat.

Chevy II 100 Sedan interiors in fawn or blue, depending on exterior color, include tasteful pattern cloth and vinyl with matching vinyl headliner and embossed sidewalls. Or if you prefer, order the all-vinyl black interior. Front seat is foam-cushioned. Durable black rubber mats cover floors.

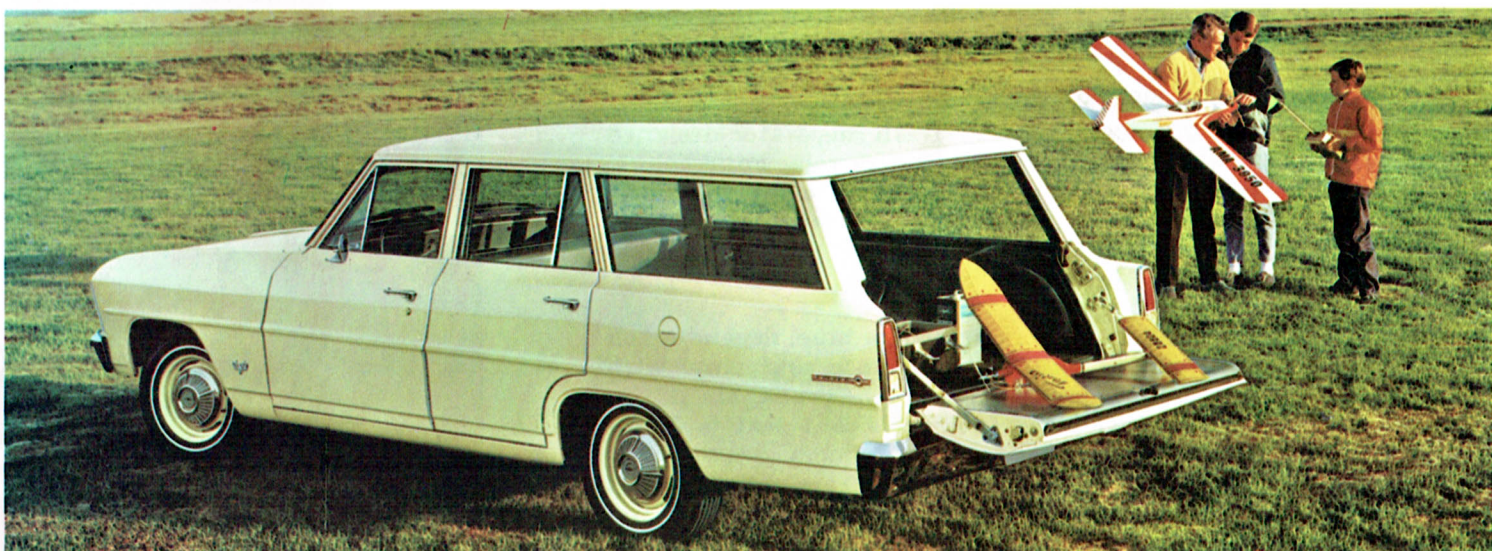
Get the utmost comfort and convenience from your Chevy II by picking your favorites from the wide range of Options and Custom Features available. Some are described and illustrated in this catalog. A more detailed list appears on pages 14 and 15.



Wide-opening doors offer easy access.



Nova 2-Seat Station Wagon in Madeira Maroon.



Chevy II 100 2-Seat Station Wagon in Capri Cream.

CHEVY II STATION WAGONS

Now what about the wagon line? A Chevy II Wagon is literally loaded with practical reasons for your family to become a Chevy II family. And once you're used to this wagon, you'll be hard put to go with any other.

Nova 2-Seat Wagon. Like no other 4-door wagon, Nova lets you travel first class at coach fare. Attractive all-vinyl interiors in fawn, blue or black—keyed to exteriors—clean easily and last. Its long, wide load floor is covered with color-matched vinyl-coated rubber mat. Deep-twist carpeting in the passenger area. The beauty of it, of course, goes beyond what you see. For instance, service-saving items such as long-life exhaust system and inner fender panels front and rear that cut corrosion to a minimum. Your standard power team is a 120-hp Six or 195-hp V8, depending on model, coupled with the 3-Speed fully synchronized transmission. Engines up to 275 hp and additional transmissions, including 4-Speed fully synchronized and Powerglide, are available. Wagon extras like power tailgate window and roof luggage carrier can be specified.

Chevy II 100 2-Seat Wagon. If you're looking for the most down-to-earth way to get your money's worth, you'll pick the 100 Wagon. It's roomy, comfortable and stylish. Sensible, thrifty and durable. Tough black rubber floor mats, including one in load area, take the hard knocks. Seats, headlining and sidewalls are washable vinyl. As on all Chevy II models, the front and rear are protected by sturdy deep-section bumpers; brakes are self-adjusting; suspension, virtually maintenance-free. Room? Over 76 cubic feet of it. When you swing down the tailgate (counterbalanced for effortless action) and fold down the rear seat, you get a full nine feet of floor length. You load through a gaping 47-inch-wide tailgate area. For real rugged going, specify heavy-duty suspension and clutch, and power steering.

Brand a Chevy II Wagon with your personal stamp from the numerous Options and Custom Features available at moderate prices. Some are shown or described in this catalog. A detailed list is on pages 14 and 15.



Nova Station Wagon interior in fawn.



Folding rear seat increases cargo area.



Power gate window has dual controls.



Full measure of load space, 76.2 cu.ft.

ENGINES:

All five Chevy II engines give you these performance-proven features: high-strength precision castings; short-stroke design; hydraulic valve lifters, efficient overhead valves, wedge-shaped combustion chambers and short inlet and exhaust ports. Controlled pressure lubrication with full-flow filter; pressurized cooling system and high-capacity water pump; individually tailored fuel induction system; positive crankcase ventilation; improved starter for both 6-cylinder engines and standard V8.

STANDARD ENGINES

(depending on model)

90-hp Super-Thrift 153 4-cylinder (available only for Chevy II 100 Sedans). A popular fuel saver, the 153 engine has economical single-barrel carburetor and manual choke. Tough crankshaft supported by five main bearings for extended engine life. Compression ratio: 8.5:1.

120-hp Hi-Thrift 194 6-cylinder. An ideal blend of economy, durability and power, this engine has single-barrel carburetor and automatic choke for quick starts and fast warm-ups; rugged seven-bearing crankshaft and 8.5:1 compression ratio.

195-hp Turbo-Fire 283 V8. Reliable V8 power is a result of such important features as quality-engineered two-barrel carburetor with automatic choke, new quieter valve train, camshaft contoured for maximum efficiency and economy and sturdy five-bearing crankshaft. Compression ratio is 9.25:1.

EXTRA-COST ENGINES

155-hp Turbo-Thrift 250 6-cylinder. Exceptionally smooth and economical power is what you'll enjoy in the Turbo-Thrift 250, thanks to precision castings that cut weight, frugal single-barrel carburetor with automatic choke, fully counter-weighted seven-bearing crankshaft and 8.5:1 compression ratio.

275-hp Turbo-Fire 327 V8. This high-stepping version of Chevrolet's popular Turbo-Fire 327 has a four-barrel carburetor with automatic choke, valve train designed for quieter operation, general-performance camshaft, hefty five-bearing crankshaft and 10.0:1 compression ratio. Heavier rated front and rear springs, heavy-duty clutch, higher performance starting motor and 61-amp.-hour battery replace base equipment when this engine is ordered.



HERE'S WHAT
MAKES A CHEVY II
A CHEVY II...



In choosing Chevy II, you pick a car that has a character all its own. It's a great combination of style, economy, durability, performance, room and worth. Big things and little things make up its total value. You'll find them listed here and on the following pages.

STANDARD SAFETY FEATURES FOR '67

Energy-absorbing steering column. Energy-absorbing instrument panel with smooth contoured knobs and levers. Padded instrument panel. Lane-change feature incorporated in direction signal control. Inside day-night mirror with shatter-resistant vinyl-edged glass and breakaway support. Soft, low profile window control knobs, and coat hooks. Seat belts—front and rear with pushbutton buckles. Front seat belt retractors. Front seat shoulder belt anchors. Padded sun visors. Folding front seat back latches (2-doors). Folding seat back latches (wagons). Four-way hazard warning flasher. Energy-absorbing steering wheel. Thick-laminate windshield. Dual-speed windshield wipers. Windshield washer. Reduced-glare instrument panel and windshield wiper arms and blades. Passenger-guard door locks—all doors. Outside rearview mirror. Backup lights. Uniform shift quadrant. Safety door latches and hinges. Tire safety rim. Corrosion-resistant brake lines. Dual master cylinder brake system with warning light.

POWER TEAMS

STANDARD ENGINES		Standard 3-Speed Fully Synchronized	Extra-Cost* 4-Speed Fully Synchronized	Extra-Cost* Powerglide
90-hp Super-Thrift 153 4-cylinder	Chevy II 100 2- & 4-door sedan	●		●
120-hp Hi-Thrift 194 6-cylinder	All models	●		●
195-hp Turbo-Fire 283 V8	All models	●	●	●
EXTRA-COST OPTIONAL ENGINES				
155-hp Turbo-Thrift 250 6-cylinder	All models	●		●
275-hp Turbo-Fire 327 V8	All models	●	●	●

*Floor-mounted shift in center console plate on Nova Super Sport.

TRANSMISSIONS:

3-Speed Fully Synchronized. Standard on all Chevy II models, this favorite transmission gives you full synchronization of all forward gears for smooth downshifting. It has wide helical gears and large synchronizers. The shift lever is mounted on the steering column.

4-Speed Fully Synchronized. Available on models equipped with the standard 195-hp V8 or the optional 275-hp V8. Highlights: quick shifting, all helical gears, full synchronization in all forward gears. Shift lever is mounted on the floor (in a center console plate on Nova Super Sport).

Powerglide Automatic. You'll appreciate the quiet and quick response that are characteristic features of this smooth-shifting automatic. It has a three-element torque converter, two-speed planetary gear-set and, for quick passing, an accelerator-actuated automatic mechanism for downshifting into low range. Shift lever is mounted on the steering column (except on Nova Super Sport where it is floor-mounted in a center console plate).



Ride is smooth, stable and quiet.

SUSPENSION:

Comfort has always been part of Chevy II's reputation. Independent front suspension with strut-supported lower control arms and high-mounted coil springs gives you a built-in road-leveling action. Rear springs are Mono-Plate. For extra cushioning, direct, double-acting shock absorbers at each wheel.

WHEELS AND TIRES:

14" wheels on all models. (For specific details on tire sizes, appearance features and availability with car models, see your Chevrolet dealer.)

STEERING:

A rear-mounted low-friction steering system with precise Ball-Race steering gear makes for easy turning, a boon when parking.

CLUTCH:

Diaphragm spring-type (centrifugally assisted with 4-Speed transmission), its dry disc is single-spring cushioned. The release bearing is sealed in lubricant. Disc size and diaphragm spring pressure are tailored to engine size.

REAR AXLE:

Hypoid, semi-floating type with ratios matched to your choice of power team.

BODY BY FISHER:

New Chevy II Body by Fisher features for '67 include new grille, front fender lines and bright metal trim. Every model is of integral body and frame design, with protective inner fender skirts and bolt-on front fenders for easy repairs. The body is thoroughly insulated and sealed against leaks and squeaks. High-level cowl ventilation is ducted through individually controlled vents in both front cowl side panels. Rheostat-controlled lighted instrument cluster includes speedometer; odometer; fuel gauge; oil pressure, engine temperature and generator indicator lights (electric clock is standard in Nova Super Sport Coupe), also mounted on instrument panel are horizontal controls for blended-air heater and defroster (lighted on Nova & Nova Super Sport), high beam and brake lights. Locking glove box. Trunk lid, hood and station wagon tailgates are counterbalanced for easy action. Trunk has low sill height for easy loading, contains 25.5 cubic feet of total luggage compartment space (luggage compartment mat is standard on Nova and Nova Super Sport). Station wagon load-toting ability is 76.2 cubic feet big. All doors are wide-opening for easy access. Deep section bumpers protect front and rear.



Spacious luggage compartment.

EASY-CARE FEATURES:

Long-wearing Magic-Mirror acrylic lacquer finish (in 15 colors) requires minimum maintenance to keep its good looks. Quick-cleaning vinyl headlining, sidewall trim and scuff-resistant cowl side panels. All-vinyl upholstery in station wagons and Nova Super Sport Coupe. Flush-and-dry rocker panels keep the rust away from your doors. Plastic panels between front fenders and skirts protect against corrosion, too. So does the aluminized or aluminized and stainless steel exhaust system. High-capacity Delcotron generator provides battery-charging current even at low engine speeds. This means longer life for the 45-ampere-hour battery.



Magic-Mirror finishes make looks last.

SPECIFICATIONS:

Wheelbase.....	110.0"
Width, overall.....	71.3"
Length, overall	
Station wagons.....	187.4"
Other models.....	183.0"
Tread	
Sta. wagons...front, 56.3", rear, 55.8"	
Other models.front, 56.8", rear, 56.3"	
Height	
Sedans.....	55.1"
Station wagons.....	55.7"
Nova Sport Coupe.....	52.8"
Nova Super Sport Coupe.....	53.8"
Luggage compartment—	
usable volume (cu. ft.).....	13.0
Station wagon cargo volume	
(cu. ft.).....	76.2
Turning diameter (feet)	
Curb-to-curb.....	38.4
Wall-to-wall.....	39.5
Steering ratio, overall	
Standard.....	25.4:1
Power.....	25.4:1
Fuel tank capacity	
(in gallons).....	16



Center console plate for Nova Super Sport Coupe comes complete with shift lever when Powerglide or 4-Speed is specified.

PERFORMANCE ITEMS

Consider the new 155-hp Turbo-Thrift 250 6-cylinder engine for economy, durability and spirit. Or, the 275-hp Turbo-Fire 327 V8 for top-of-the-line power. A 4-Speed fully synchronized transmission with floor-mounted shift lever for the 195-hp V8 and 275-hp V8. Powerglide automatic for all engines. Center console plate with Powerglide or 4-Speed on Nova Super Sport Coupe includes shift control.

Heavy-duty 10" clutch (except on models with air conditioning) is good to have for driving with heavy loads. Dual exhaust system for increased efficiency (with 195-hp and 275-hp V8s only).

Positraction for a better grip in snow, mud or rain. The range of rear axle ratios offered is: 3.08:1, 3.36:1 and 3.55:1 (depending on model ordered). Superlift air-adjustable rear shock absorbers.

Heavy-duty suspension, including heavier rated front and rear springs (standard when 275-hp V8 is ordered—not available on 6-cylinder sport coupes).

Heavy-duty Delcotron generator and radiator (included with All-Weather air conditioner). 70-amp.-hour battery.

Front wheel disc brakes—new in Chevy II—offer cooler brakes to virtually eliminate fading.

CUSTOM FEATURES

Here are the many choice Custom Features you can order. Whatever you get will help make the Chevy II an even more satisfying car for the money.



Vinyl roof covering, bumper guards, headrests, full wheel covers and door edge guards, as shown, add to Chevy II appeal.

POWER ASSISTS

Power steering makes your driving finger-light and reduces steering effort as much as 90%. Power brakes provide easy, steady stops, reduce braking effort as much as 33% (not available on 4-cylinder Chevy II models).

LIGHTS

Auxiliary Lighting Group* gives you the extra light you need, contains ashtray, glove box, instrument panel courtesy, luggage compartment and underhood lights (door-activated dome and glove box lights are standard on Nova and Nova Super Sport). Hand portable spotlight also available.

COMFORT

You can make a comfortable Chevy II more so with any of these relaxers: Ventilated seat pad. Strato-ease front seat headrests. Thicker foam-cushioned front seat for Chevy II 100 models. Eye-easing Soft-Ray tinted windshield and side glass.



Strato-ease front seat headrests for greater relaxation.

AIR CONDITIONING

You can do something about the weather with the new-to-Chevy II All-Weather air conditioning. It filters and dehumidifies outside and inside air or a blend of both while regulating the interior tem-

perature to suit you. There's also a new Comfort-Car air conditioner for dealer installation with integral-looking under-dash appearance and increased air flow for recirculating, filtering, dehumidifying and cooling interior air.



Comfort-Car air conditioning to freshen your going.

CONVENIENCE

Operating Convenience Group*, containing remote control outside mirror and rear window defroster (rear window defroster not included for wagons), makes driving more comfortable. Other convenience items: deluxe three-spoke steering wheel with horn switches mounted on the spokes, or a sporty steering wheel with the look of wood. Visor vanity mirror. Instrument panel and saddle-type litter containers. Deck lid luggage carrier. Ski carrier. Windshield-mounted auto compass.

Foundation Group* including pushbutton all-transistor AM radio with front antenna and electric clock (electric clock with second hand is standard on Nova Super Sport), plus extra-thick foam front seat cushion for Chevy II 100. Additional features available: rear seat speaker, tissue dispenser, cigarette lighter (standard on Nova and Nova Super Sport). Trailer hitch. Trailer wiring harness.

Other specially designed items include: Front seat shoulder belts. Custom Deluxe color-matched seat

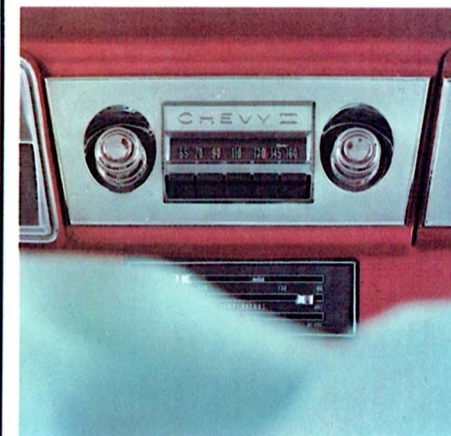
belts. Rear door safety lock buttons. Highway emergency kit, containing flares, fuses, an antenna flag, fire extinguisher and flat tire inflator. Individual fire extinguisher and recharge kit. Speed warning unit that buzzes when you reach a predetermined speed. Spare wheel and gas filler cap locks for extra protection.

STATION WAGON ITEMS

Station Wagon Convenience Group* to increase the utility of a Chevy II wagon. The package contains power tailgate window with dual controls and roof luggage carrier.

APPEARANCE

Brighten the already attractive Chevy II by selecting from such popular eye-catchers as simulated wire, Mag-style or full wheel covers (full wheel covers for Nova and Chevy II 100 only). Door edge guards. Front and rear bumper guards. Black or beige vinyl roof cover (available only on sport coupe models). Removable front and rear rubber floor mats. Thin-line white sidewall tires.



Chevy II AM radio is available with or without pushbuttons.

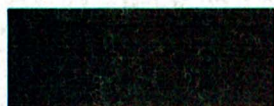
Check your Chevrolet dealer for model application and availability with other equipment.

*Items included in groups also may be ordered individually.

Chevy II Colors and Fabrics

EXTERIOR COLORS

15 solid colors—11 new ones this year—and up to six two-tone combinations are available.



Tuxedo Black



Ermine White



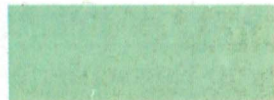
Nantucket Blue



Deepwater Blue



Granada Gold



Mountain Green



Emerald Turquoise



Tahoe Turquoise



Royal Plum*



Madeira Maroon



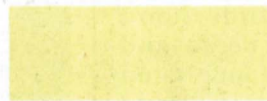
Bolero Red*



Sierra Fawn



Capri Cream



Butternut Yellow



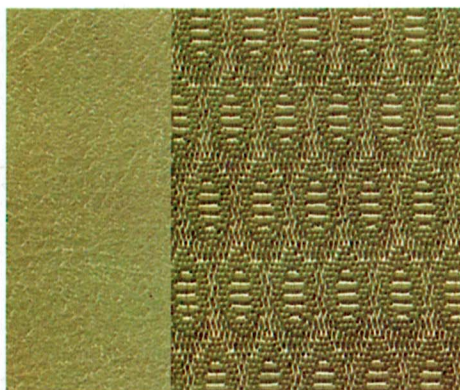
Marina Blue

INTERIOR COLORS

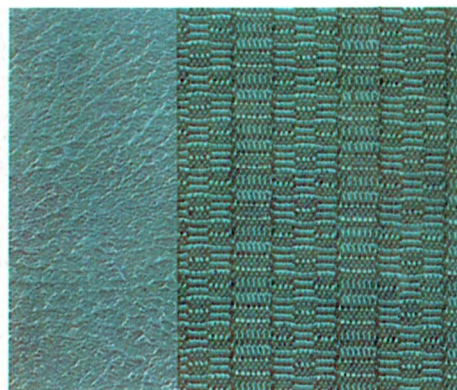
All interiors are keyed to your exterior color choice.



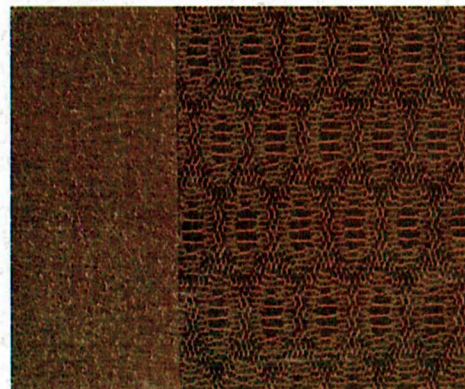
Nova Super Sport Coupe
shown in bright blue . . . also in red, gold and black—all-vinyl.



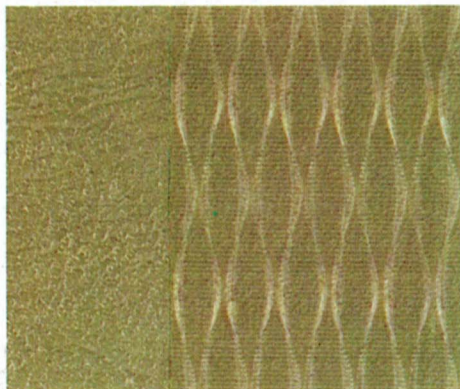
Nova Sport Coupe
shown in fawn . . . also in blue—vinyl and cloth. Black all-vinyl*.



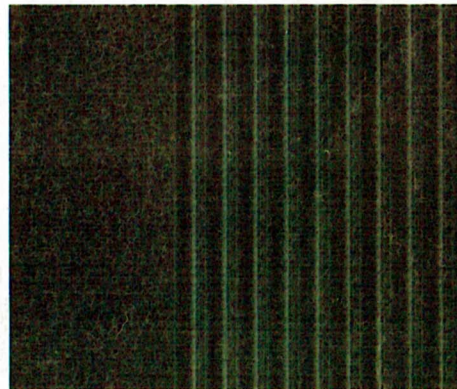
Chevy II 100 Sedan
shown in blue . . . also in fawn—vinyl and cloth. Black all-vinyl*.



Nova Sedan
shown in maroon . . . also in fawn, blue and black—vinyl and cloth.



Nova Station Wagon
shown in fawn . . . also in black and blue—all-vinyl.



Chevy II 100 Station Wagon
shown in black . . . also in blue and fawn—all-vinyl.

*Black all-vinyl interior is extra cost on Nova Sport Coupe and Chevy II 100 Sedans. It is the only interior available on these models in Bolero Red or Royal Plum.



Litho in U.S.A.—D35081

All illustrations and specifications contained in this literature are based on the latest product information available at the time of publication approval. The right is reserved to make changes at any time without notice, in prices, colors, materials, equipment, specifications and models, and also to discontinue models. CHEVROLET MOTOR DIVISION, GENERAL MOTORS CORPORATION, DETROIT, MICHIGAN 48202



CHEVROLET
DIVISION

Chevy II Colors and Fabrics

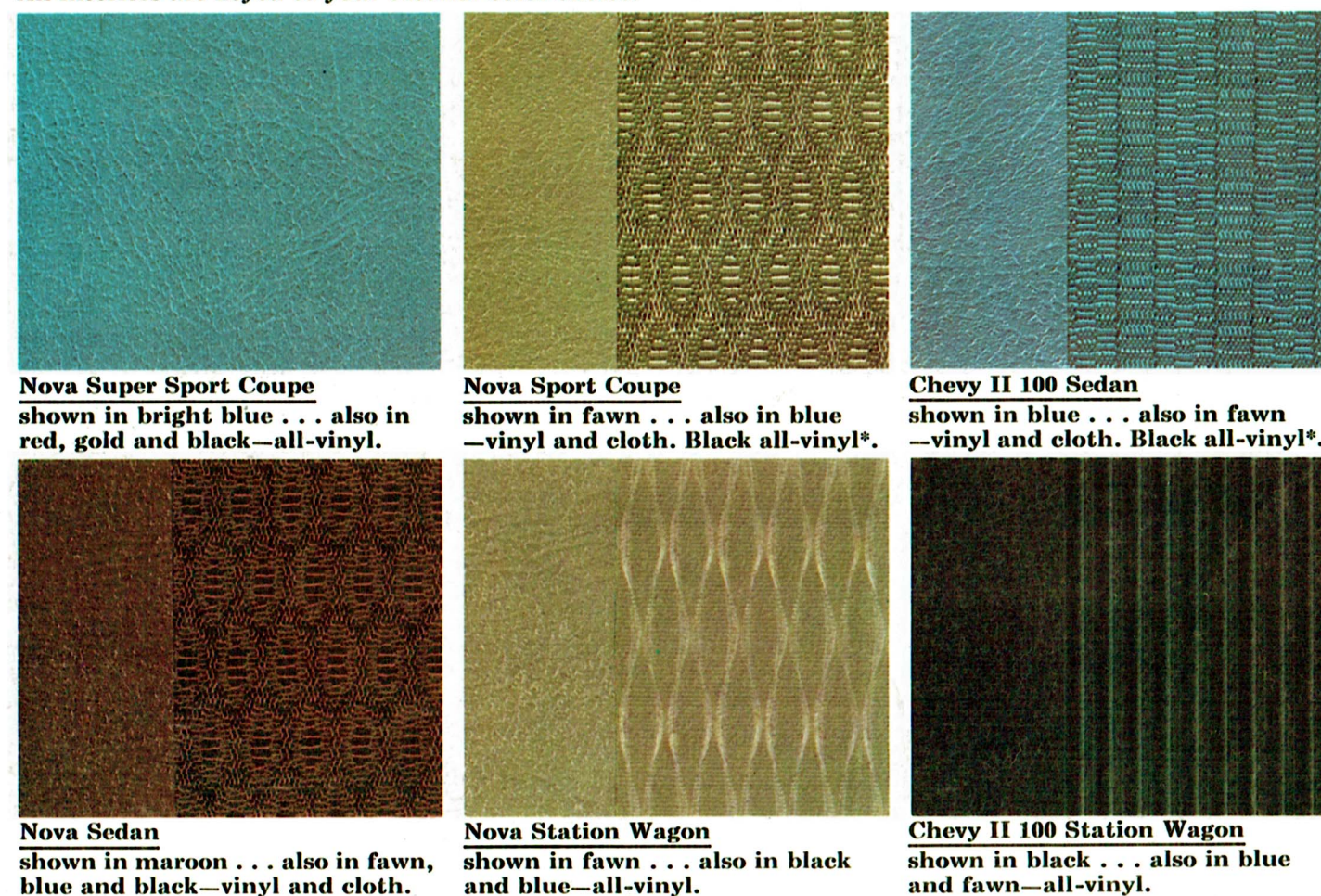
EXTERIOR COLORS

15 solid colors—11 new ones this year—and up to six two-tone combinations are available.



INTERIOR COLORS

All interiors are keyed to your exterior color choice.



*Black all-vinyl interior is extra cost on Nova Sport Coupe and Chevy II 100 Sedans. It is the only interior available on these models in Bolero Red or Royal Plum.



All illustrations and specifications contained in this literature are based on the latest product information available at the time of publication approval. The right is reserved to make changes at any time without notice, in prices, colors, materials, equipment, specifications and models, and also to discontinue models. CHEVROLET MOTOR DIVISION, GENERAL MOTORS CORPORATION, DETROIT, MICHIGAN 48202



This is Chevrolet's stylish economy car. It's designed to keep upkeep down and make you look good at the same time. So if this is what you want, read the Chevy II story from cover to cover and pick your favorite model.

~~~~~  
**'67 CHEVY II**  
**BY CHEVROLET**  
 ~~~~~