



Listen. Those sounds you hear are habits breaking. Old ties snapping. Records falling. They're the happy sounds of the Dodge Rebellion. People demanding more "hot" in their hot cars, more "big" in their big cars, more "new" in their new cars. Swingers switching to Dodge. Is Dodge '66 fresh enough for you? Are you young enough for Dodge '66? Come along. Dodge has big plans for you!

1966 DODGE MONACO POLARA CORONET DART

POLARA '66



CORONET '66



DART '66



'66 Monaco 4-door hardtop with optional, black Levant-grain vinyl roof covering. 383 V8 power is standard.

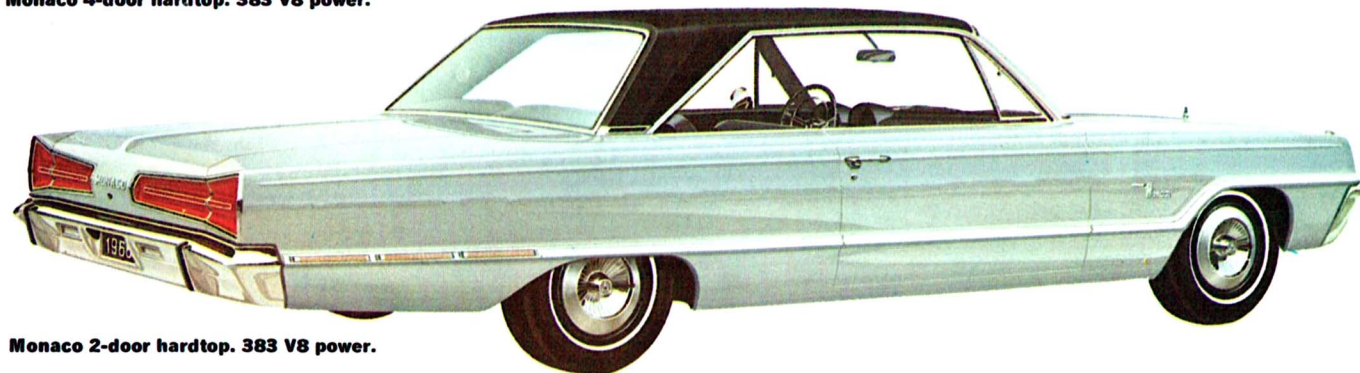
MONACO—STYLE LEADER OF THE DODGE REBELLION.

Here's the exciting way to kick the dull driving habit—with the finest Dodge ever built, Monaco! Now there's no excuse for sticking to old, tired car-buying habits. Why should you when Monaco offers you so much posh, power and pizzaz? But the Monaco, above, is just the beginning. There's a whole series of big, roomy and powerful Monaco hardtops, wagons, and sedans to choose from—plus the luxurious Monaco 500 automobile. Monaco and Monaco 500 lead the Dodge Rebellion. Don't follow the leader—drive it.

POLARA '66! (upper left) Nine new models! Spacious elegance is standard equipment. 121-inch wheelbase. All V8 power. Details on pages 6-9. **CORONET '66!** (center left) Exciting new way for you to join the Dodge Rebellion! 4 Coronet Series, 12 models. 117-inch wheelbase. Details on pages 10-15. **DART '66!** (lower left) The man-sized compact. Plenty of spunk and sizzle. Lowest priced Dodge of all! 3 Dart Series, 10 great models, 111-inch wheelbase (wagons, 106"). Details on pages 16-19. **STATION WAGON LOVERS:** Dodge has two beautiful Monaco wagons, two more big Polara wagons, three exciting new Coronet wagons, two Dart wagons, along with the popular Sportsman and Custom Sportsman. Read the good news on pages 20-23.



Monaco 4-door hardtop. 383 V8 power.



Monaco 2-door hardtop. 383 V8 power.



Monaco 4-door sedan. 383 V8 power.



Monaco hardtop interior. All-vinyl, with pull-down armrest.



Monaco sedan interior. Cloth-and-vinyl.

MONACO SERIES—BREAK AWAY FROM THE EVERYDAY. LUXURIOUSLY!

Monaco cars are the top of the '66 Dodge model lineup. Big, good-looking outside—spacious inside, with tempting interior beauty that says "Good-bye, boredom." Plush, deep-pile carpeting and flawless attention to every detail are standard Monaco Series equipment. Join the Rebellion with Monaco '66, and enjoy every luxurious mile of it!



Monaco 500 interior. The finest we offer for '66. Front bucket seats, center console, wicker inserts in door panels.



Monaco 500 2-door hardtop. 383 4-barrel V8 power, standard.

MONACO 500—THE VERY FINEST DODGE OF ALL FOR '66.

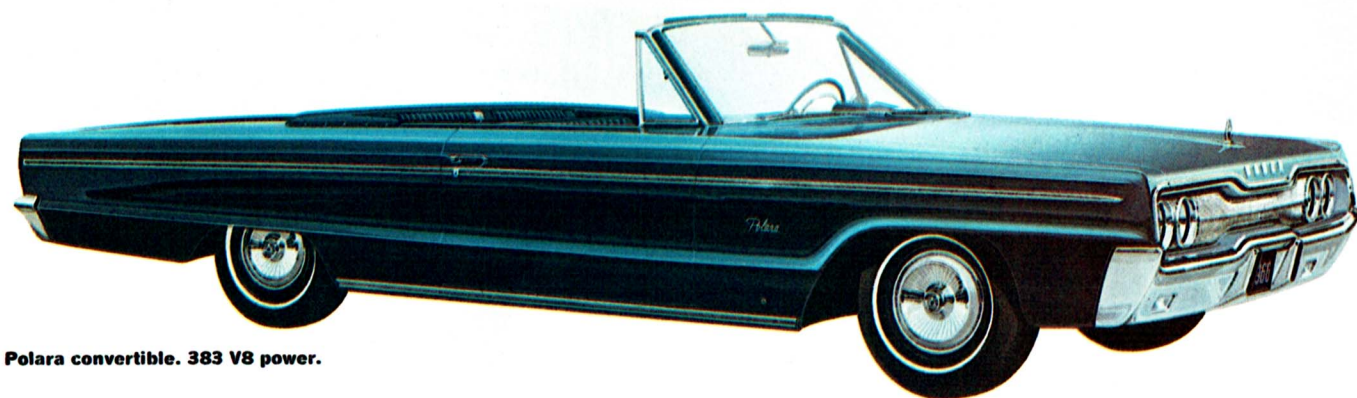
One look tells you that when you go Monaco 500, you go first class. (And isn't that the best way?) Monaco 500's list of standard equipment never seems to end. Your choice of body and interior colors and custom options is unusually wide. Hot 4-barrel 383 V8 is standard. (The 2-barrel 383 V8, which uses regular fuel, is optional.) Nothing says style—room—power—and luxury more forcefully than Dodge Monaco 500!



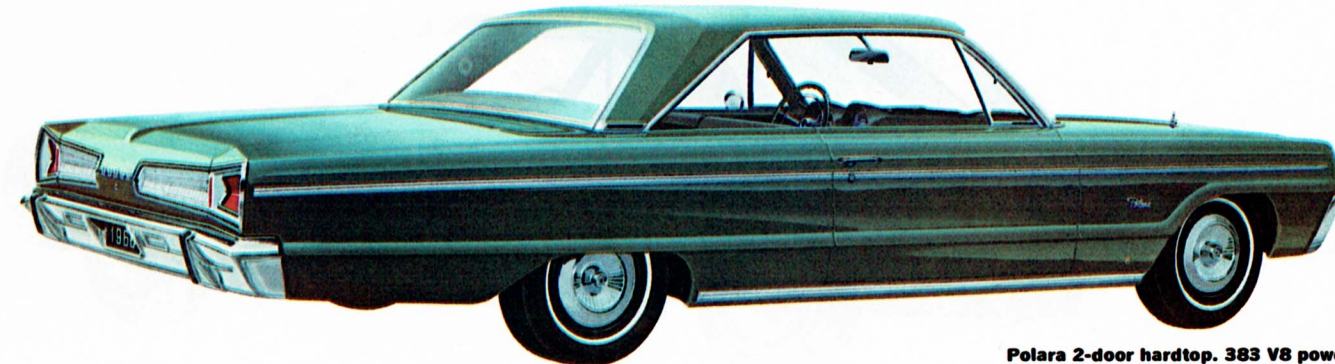
Polara 4-door hardtop, with optional black Levant-grain vinyl roof covering. 383 V8 power is standard.



Polara all-vinyl interior. Optional in hardtops, sedan. Standard in station wagons, convertible.



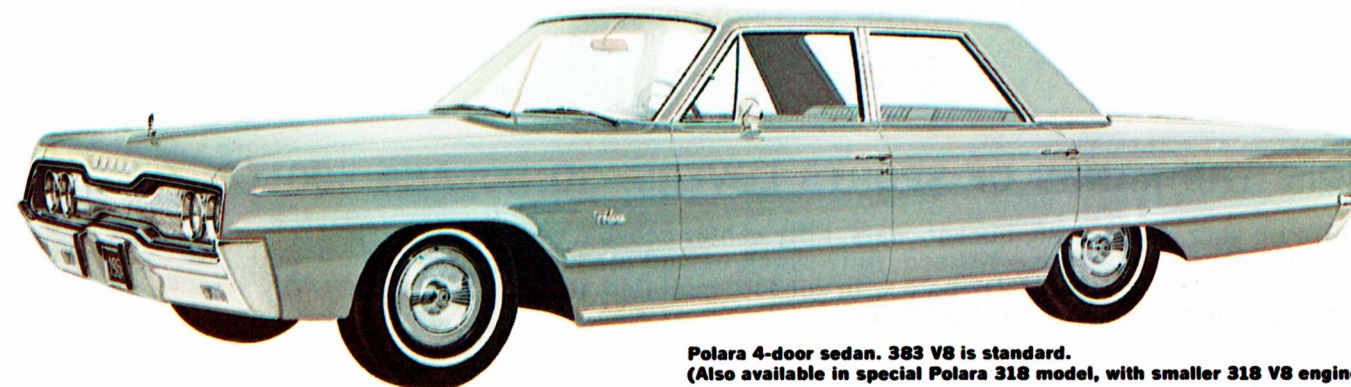
Polara convertible. 383 V8 power.



Polara 2-door hardtop. 383 V8 power.

DEMAND MORE "BIG" IN YOUR BIG CAR. SWING WITH DODGE POLARA.

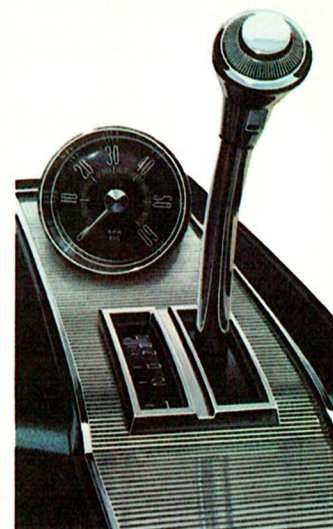
If you're not content to string along with the herd, take a long look at the handsome, big Polaras on these pages. Your first thought may be "Nice . . . but out of my class." Don't you believe it. For that's what the Dodge Rebellion is all about. Giving swingers more go, more show, and more spice for the same price they've always paid. By the time you buy a standard, low-priced car and add a few of the things Polaras have standard, you can end up paying Polara's price and still be a long way from Polara's class. So, march down to your Dodge Dealer's—the Dodge Rebellion wants you!



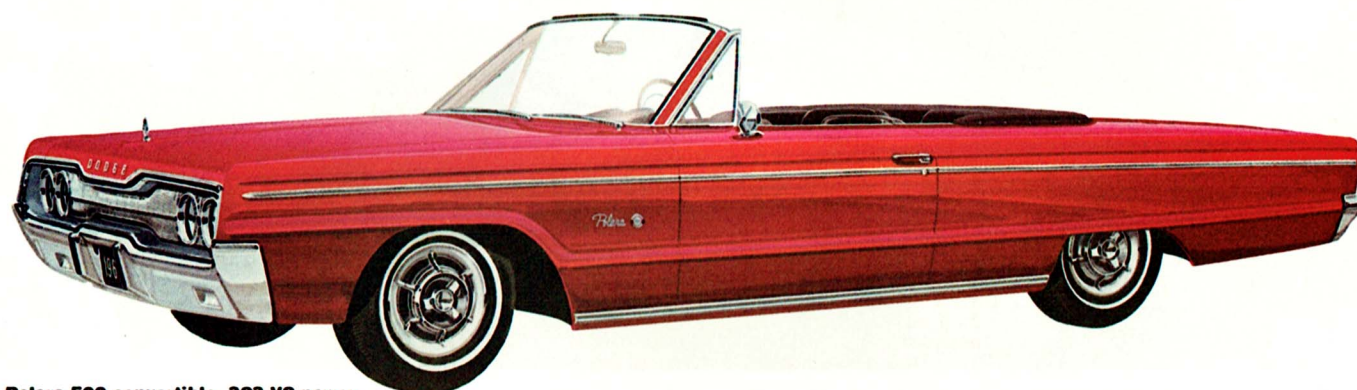
Polara 4-door sedan. 383 V8 is standard.
(Also available in special Polara 318 model, with smaller 318 V8 engine.)



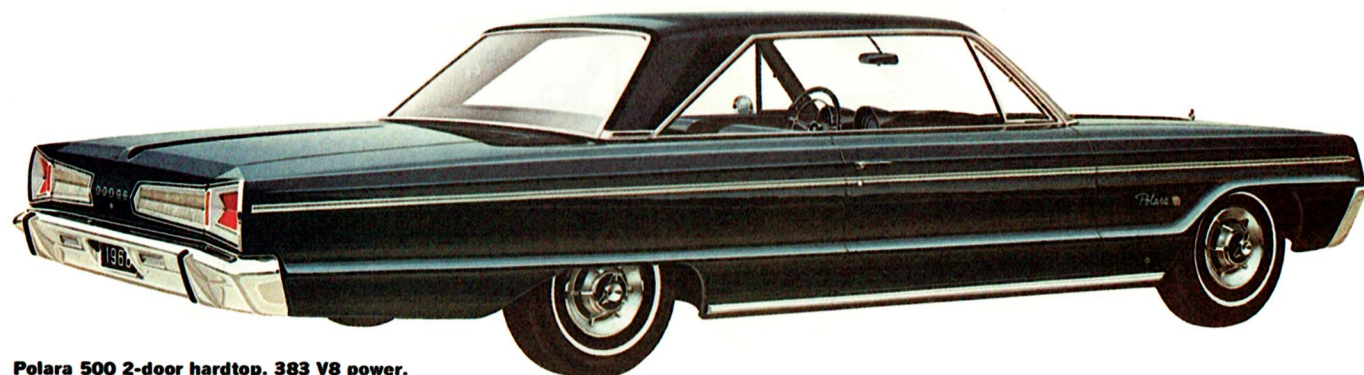
Polara 500 front bucket seats. Really comfortable. Once you sink into these full-volume foam seats, you'll want to make your stay permanent.



Automatic transmission, with console-mounted selector, is optional. Tachometer is optional, at extra cost.



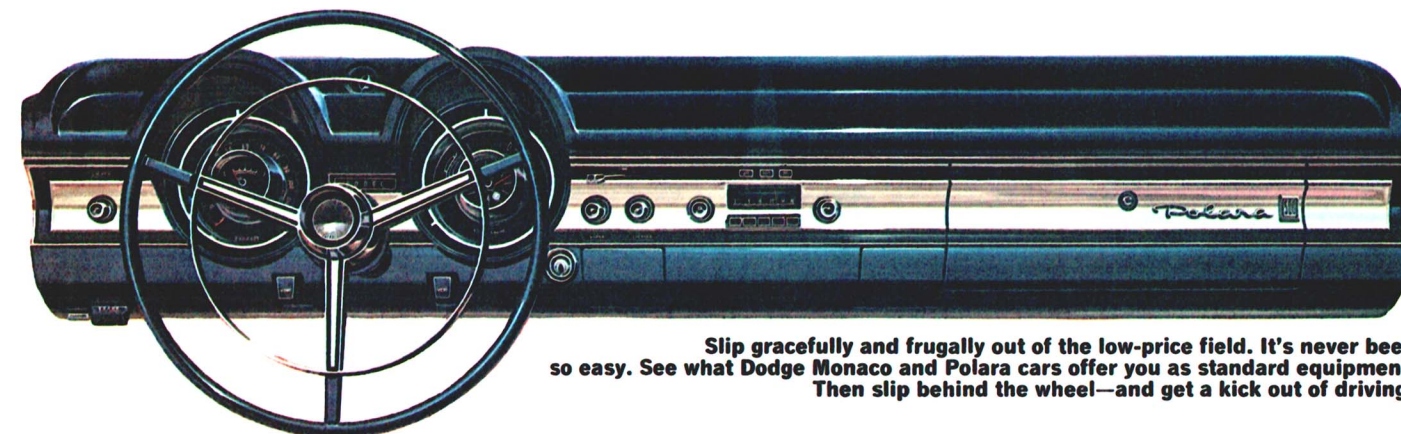
Polara 500 convertible. 383 V8 power.



Polara 500 2-door hardtop. 383 V8 power.

JOIN THE RANKS OF SPORTS LOVERS. GO POLARA 500!

Spice up your driving! Big bucket seats, nifty center console with a choice of transmissions—4-speed, fully-synchronized manual (optional) or 3-speed automatic (optional)—both with console-mounted sticks. Want to swing? Sound off for Polara 500.



Slip gracefully and frugally out of the low-price field. It's never been so easy. See what Dodge Monaco and Polara cars offer you as standard equipment. Then slip behind the wheel—and get a kick out of driving!

MONACO AND POLARA STANDARD EQUIPMENT

Safety inside door handles ■ Crank-operated vent panes ■ Curved side windows ■ Padded dash ■ Turn signals ■ Fender-mounted turn signal indicators (all Monacos, except Monaco wagons) ■ Outside, left, rear view mirror* ■ Trunk compartment light (Monaco and Monaco 500) ■ Backup lights ■ Glove box light (Monaco and Monaco 500) ■ Heater/defroster ■ Electric tailgate window (except Polara 2-seat wagon) ■ Power convertible top ■ Full carpeting ■ Variable-speed windshield wipers ■ Windshield washers ■ 2-spoke steering wheel with half horn ring* ■ 2½" foam cushion, front (Monaco) ■ 4 color-keyed seat belts—2 front, 2 rear ■ Front seat with 6-way mechanical adjustment ■ All-vinyl interior (convertibles, wagons, Polara 500 models, Monaco, and Monaco 500 HTs) ■ 3-speed manual transmission (N.A. Polara 500, Monaco 500) ■ 383 cubic-inch (2-bbl.) V8 (N.A. Polara 318; optional on Monaco 500) ■ Plastic spare tire cover for wagon ■ Wheel covers (std., Monaco) ■ Acrylic enamel finish in choice of 18 colors.

STANDARD FOR MONACO 500 ONLY

Sill moulding ■ White, red, black or blue paint stripe ■ Deluxe wheel covers (1) ■ Center console (1) ■ Electric clock ■ Outside, left, remote-control mirror ■ Prismatic (glare-resistant) inside mirror ■ Front bucket seats (1) ■ 383 cubic-inch (4-bbl.) V8 ■ TorqueFlite automatic transmission ■ 3-spoke steering wheel with full horn ring.

*Replaced by remote-control mirror and 3-spoke wheel in Monaco 500.
(1) Polara 500 also.

MONACO/POLARA DIMENSIONS

(Sta. wgs. in brackets.) Wheelbase, 121.0". Overall length, 213.3" (2-seat, 217.1"; 3-seat, 218.4"). Overall width, 80.0" (79.4"). Tread, front/rear, 62.0"/60.7". Station wagon loading dimensions: interior length, between front seatback and closed tailgate, 95.7". Maximum rear opening height, 29.5"; width, at floor, 55.0". Width between wheelwells, 44.9". Maximum cargo volume, 96.9 cu. ft.

MONACO/POLARA ENGINES

383 V8 (2-bbl.), 270 hp. Std. on all Polara, Polara 500 and Monaco models. Optional (at no additional cost) on Monaco 500. Uses regular fuel.

383 V8 (4-bbl.), 325 hp. Optional at extra cost on all Polara, Polara 500, and Monaco models. Standard on Monaco 500. Requires premium fuel.

440 V8 (4-bbl.), 350 hp. Optional at extra cost on all Polara, Polara 500, Monaco and Monaco 500 models (including wagons). Requires premium fuel.

For Polara 4-door sedan only: A special Polara 318 model offers the smaller 230 hp., 2-bbl. V8 engine, using regular fuel. 3-speed manual transmission is standard on Polara 318; TorqueFlite automatic is optional at extra cost; 4-speed manual transmission is not offered.

MONACO/POLARA TRANSMISSIONS

3-speed manual. Standard on Monaco and Polara models. Not offered on Monaco 500 and Polara 500. Shift lever is steering-column-mounted. N.A. with 440 V8.

3-speed TorqueFlite automatic with internally actuated parking sprag. Optional, at extra cost, on Monaco and Polara; standard on Monaco 500, and cars equipped with 440 V8. Selector lever is column-mounted on Monaco and Polara models, console-mounted on Monaco 500 and Polara 500. Aluminum housing. Water-cooled.

4-speed manual. All four forward speeds synchronized. New positive reverse-lockout feature. Shift lever is console-mounted. Not offered on Polara and Monaco models. Optional on Polara 500 and Monaco 500 only when powered by 383 (4-bbl.) V8 or 440 V8.

OPTIONS AND ACCESSORIES

Performance:

383 (4-bbl.) V8 (std., Monaco 500) ■ 440 (4-bbl.) V8 ■ TorqueFlite automatic transmission (std., Monaco 500 and cars with 440 V8) ■ 4-speed manual transmission (Polara 500, Monaco 500 only) ■ Disc brake package (15" wheels and tires required) ■ Sure Grip differential ■ Trailer towing package (Ask your Dealer for a Dodge trailer towing brochure) ■ Power brakes ■ Power steering ■ Tachometer (Polara 500, Monaco 500 only).

Comfort and Convenience:

Air conditioning ■ Dual air conditioning (wagons only) ■ 6-way power seat ■ Electric window lifts ■ Deck lid vacuum release ■ 3-spoke steering wheel with full horn ring (std., Monaco 500) ■ Tilt and telescoping steering wheel ■ Light package: parking brake light, glove box light, trunk light, map and courtesy light, ashtray light (std., Monaco, Monaco 500; opt., Polara, Polara 500), cargo area light (std., all Monaco wagons and Polara 3-seat wagon) ■ Lockable storage compartment (2-seat wagons) ■ Auto Pilot speed control (automatic transmission and power brakes required) ■ Tinted windshield or windshield and windows ■ Electric tailgate window lift (std., all Monaco wagons, and Polara 3-seat) ■ Assist handles (wagons only) ■ Music Master AM radio ■ Astrophonic 5½ watt deluxe AM radio ■ AM/FM radio ■ Rear seat speaker (except wagons) ■ Electric clock (std., Monaco 500) ■ Thick, front seat foam cushion (std., Monaco) ■ All-vinyl interior trim (Polara sedan, hardtops; std. on other Polara models and Monaco hardtops and wagons) ■ Retractable front and rear seat belts (regular seat belts, std.) ■ Rear window defroster (N.A. wagons, convertibles) ■ Prismatic rear view mirror (inside), (std., Monaco 500) ■ Outside, remote-control mirror (std., Monaco 500) ■ Electric door locks.

Appearance:

Sill moulding (optional, Polara only) ■ Sandstone metallic and Silver metallic acrylic enamel (other body colors, std.) ■ White or black Levant-grain vinyl roof coverings (all hardtops) ■ Two-tone paint (except Monaco wagons, Polara convertibles) ■ Front bumper guards ■ Rear bumper guards (except wagons) ■ Rear bumper guards/step pads (2-seat wagons) ■ Fender skirts (except wagons) ■ Deluxe wheel covers (std., Monaco 500 and Polara 500; N.A. with fender skirts).



Coronet 440 convertible. Six or V8 power.



Coronet 440 all-vinyl interior. Standard in hardtop, convertible and wagons. Optional in 4-door sedan.



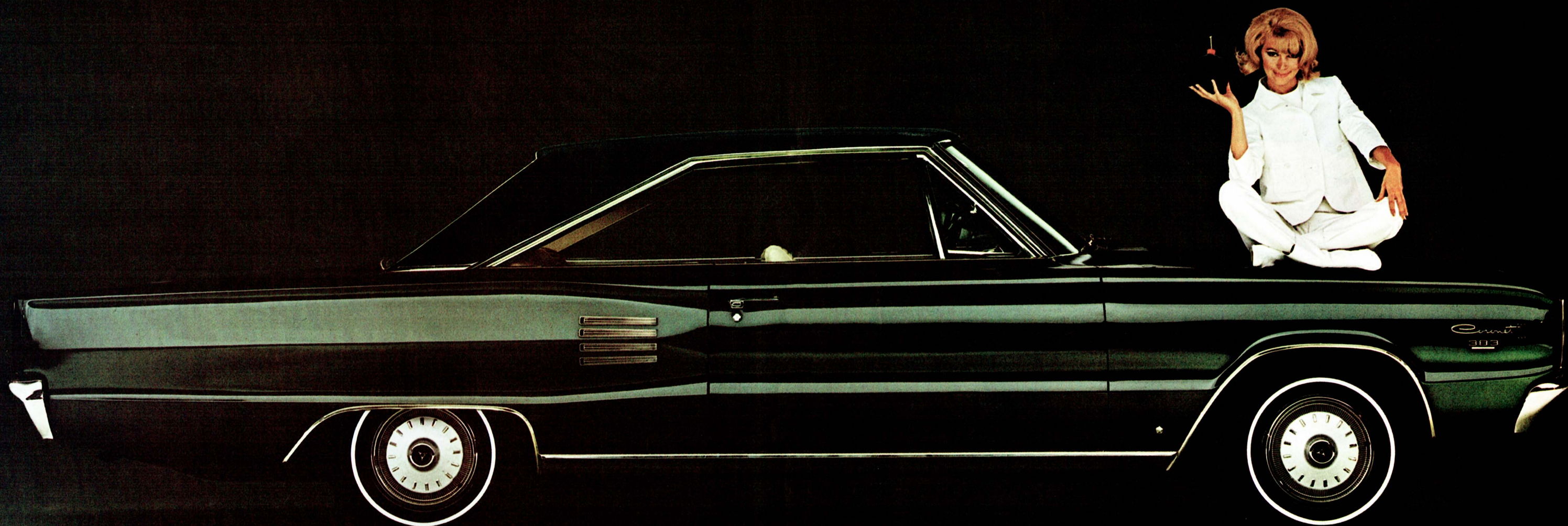
Coronet 440 2-door hardtop. Six or V8 power.



Coronet 440 4-door sedan. (2-door sedan not offered in 440 Series.) Six or V8 power.

ANNOUNCING A BEAUTIFUL REBELLION ON WHEELS: '66 DODGE CORONET!

Dullsville falls. Coronet rises. Look at the hot new '66 Coronet 440 above. It's the rambunctious rebel that's leading Dodge's charge on Dullsville. Slip into that tempting all-vinyl interior, and you're on your way. Coronet has a stable of spirited engines to carry you away. We say dull driving must go. The time is now. New Coronet is how. The Dodge Rebellion wants you.



Wow! Coronet 500 2-door hardtop. Top of the Coronet line for '66!



Coronet 500 convertible. Soft-top version of the big one above!

KICK THE DULL DRIVING HABIT. STEP OUT IN LIVELY CORONET 500.

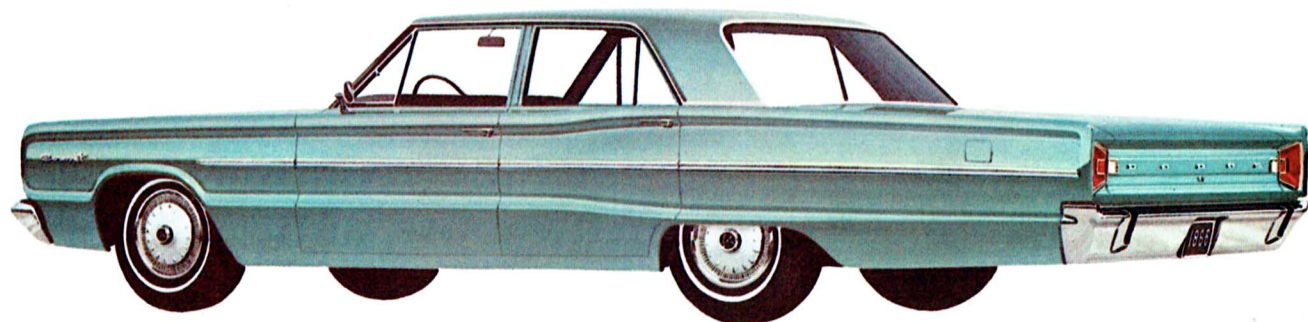
Here's the plan: New 1966 Coronet 500 will draw attention to itself with its fresh styling and tempting interior beauty, complete with contour-comfort bucket seats, deep-pile carpeting, padded dash—the works! Sizzling V8 power is yours in all Coronet 500's: 273 is standard—318, 361, and the 4-barrel 383 are optional. For added spice, get the automatic transmission* with center-console-mounted stick or 4-on-the-floor manual.**

*Optional at extra cost. ■ **Available with 361 V8 and 383 V8 only.



Luxury like this comes standard on both Coronet 500 models. Ever see a car with such a lavish interior?

CORONET DELUXE SERIES (lets you join the Dodge Rebellion on a budget).

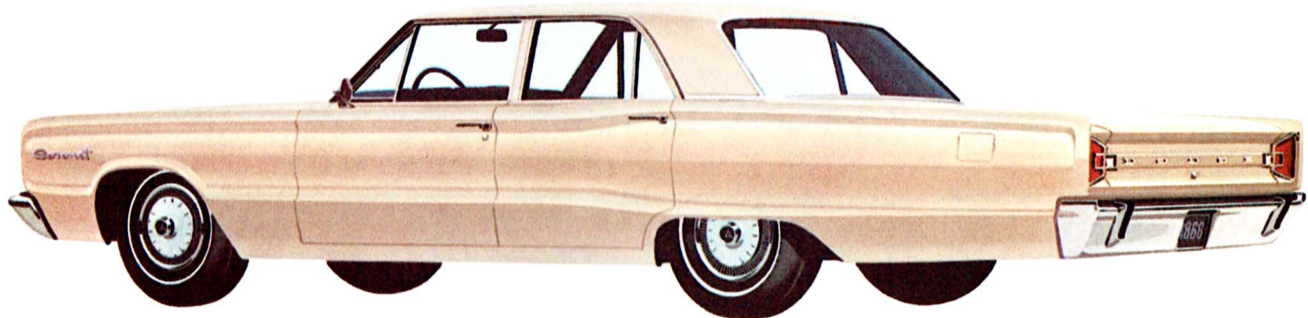


Coronet Deluxe 4-door sedan. 6 or V8 power.

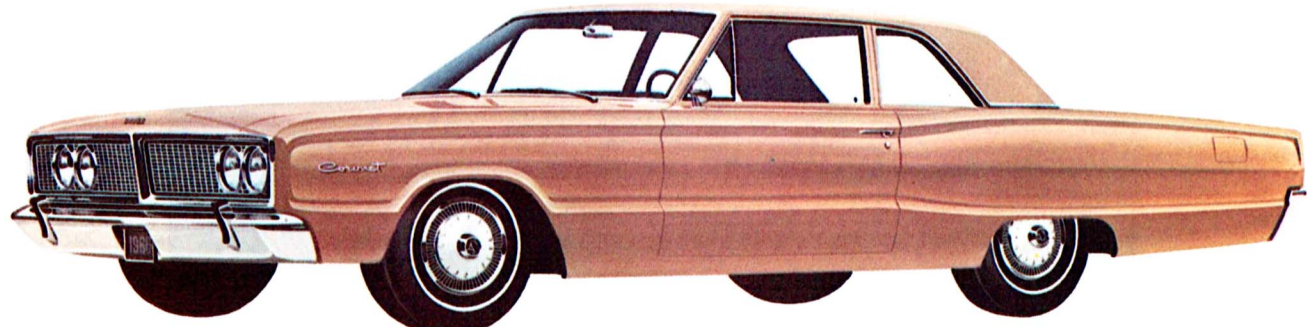


Coronet Deluxe 2-door sedan. 6 or V8 power.

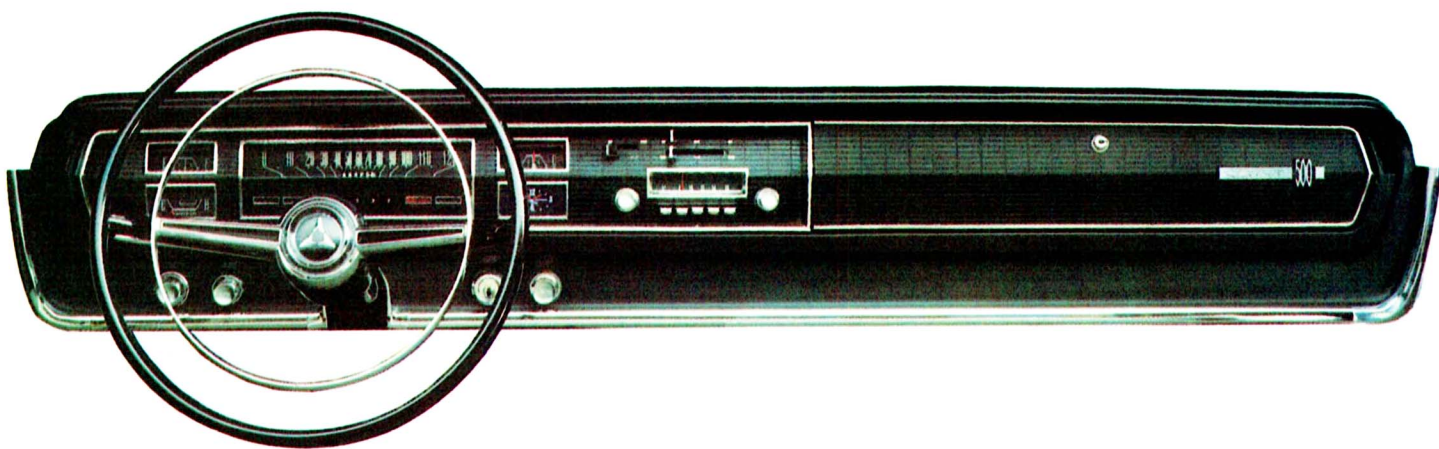
CORONET SERIES (lowest priced Coronets of all)!



Coronet 4-door sedan. 6 or V8 power.



Coronet 2-door sedan. 6 or V8 power.



CORONET STANDARD EQUIPMENT

Acrylic enamel finish ■ Bumper guards & step pads (3-seat wagon) ■ Wheel covers (500) ■ Sill moulding (440, 500) ■ Heater/defroster ■ Variable-speed windshield wipers ■ Windshield washers ■ Turn signals ■ Outside, left, rear view mirror ■ Curved side glass ■ Safety inside door handles ■ Cigarette lighter (except Coronet Series) ■ Glove box lock ■ Padded dash ■ Backup lights ■ Map and courtesy light (440) ■ Full horn ring (440, 500) ■ Black rubber floor mats (Coronet) ■ Color-keyed rubber floor mats (Coronet Deluxe) ■ Full carpeting (440, 500) ■ 2¼" foam cushion, front (440) ■ 1¾" foam cushion, rear (440) ■ Color-keyed seat belts, 2 front and 2 rear ■ All-vinyl trim, hardtops, convertibles, wagons ■ Power convertible top ■ 3-speed manual transmission ■ 225 cubic-inch Slant Six (6-cyl. models) ■ 273 cubic-inch V8 (8-cyl. models) ■ Electric tailgate window (440 3-seat wagon) ■ 19-gallon fuel tank ■ Self-adjusting brakes ■ Foot-operated parking brake with hand release.

'66 CORONET DIMENSIONS

Wheelbase, 117.0". Overall length, 203.0" (2-seat wagons, 207.9"; 3-seat wagon, 209.0"). Width, 75.3". Tread: front, 59.5"; rear, 58.5". Station wagon loading dimensions: interior length between front seatback and closed tailgate, 92.2" (2-seat wagons); 91.7" (3-seat wagons). Maximum rear opening height, 30.4"; width, at floor, 51.5". Width between wheelwells, 45.3". Maximum cargo volume, 88 cubic feet.

CORONET ENGINES

225 Six (1-bbl.), 145 horsepower. Standard for 6-cylinder models (not available on Coronet 440 3-seat wagon, Coronet 500). Uses regular fuel.

273 V8 (2-bbl.), 180 horsepower. Standard for all V8 models. Uses regular fuel.

318 V8 (2-bbl.), 230 horsepower. Optional for all V8 models. Uses regular fuel.

361 V8 (2-bbl.), 265 horsepower. Optional for all V8 models. Uses regular fuel.

383 V8 (4-bbl.), 325 horsepower. Optional for all V8 models. Requires premium fuel.

CORONET TRANSMISSIONS

3-speed manual. Standard on all Coronet models. Not available with 361, 383 V8 engines. Shift lever is mounted on steering column.

3-speed TorqueFlite automatic, with internally actuated parking sprag. Optional at extra cost on all Coronet models. Column-mounted selector lever (except Coronet 500 with center console). Aluminum housing. Water-cooled.

4-speed manual. Available at extra cost with 361 V8 and 383 V8 engines. Shift lever is floor- (or console-) mounted. All four forward speeds are synchronized. Positive reverse-lockout feature is new for '66.

CORONET OPTIONS, ACCESSORIES

Performance:

318 V8 (2-bbl.) ■ 361 V8 (2-bbl.) ■ 383 V8 (4-bbl.) ■ Automatic transmission ■ 4-speed manual transmission (1) ■ Sure Grip differential ■ Trailer towing package (Ask your Dealer for a Dodge trailer towing brochure) ■ Tachometer (Coronet 500 only).

Comfort and Convenience:

Air conditioning (integral with heater) (2) ■ Power brakes ■ Power steering ■ Outside remote-control mirror ■ Inside prismatic mirror ■ Electric window lifts (3) ■ Tinted windshield or windshield and windows ■ Retractable seat belts (front and rear) ■ Transistorized radio ■ Rear seat speaker (4) ■ Roof luggage rack (5) ■ Electric tailgate window (std., 440 3-seat wagon) ■ Lockable under-floor storage (6) ■ Emergency flasher ■ Light package: Parking brake light. Glove box light. Trunk or cargo area light (cargo area light, std., 3-seat wagon).

Appearance:

White sidewall tires ■ Bumper guards ■ Black or white Levant-grain vinyl roof covering (7) ■ Wheel covers (8) ■ Two-tone paint ■ Wood-grain steering wheel (9) ■ Vinyl interior (440 sedan).

(1) 361 V8, 383 V8 only. (2) N.A. with 361 V8 with 4-speed manual transmission. (3) Hardtops, convertibles only. (4) Hardtops, sedans only. (5) Station wagons only. (6) 2-seat wagons only. (7) Hardtops only. (8) Std., Coronet 500 only. (9) Coronet 440, 500 only.



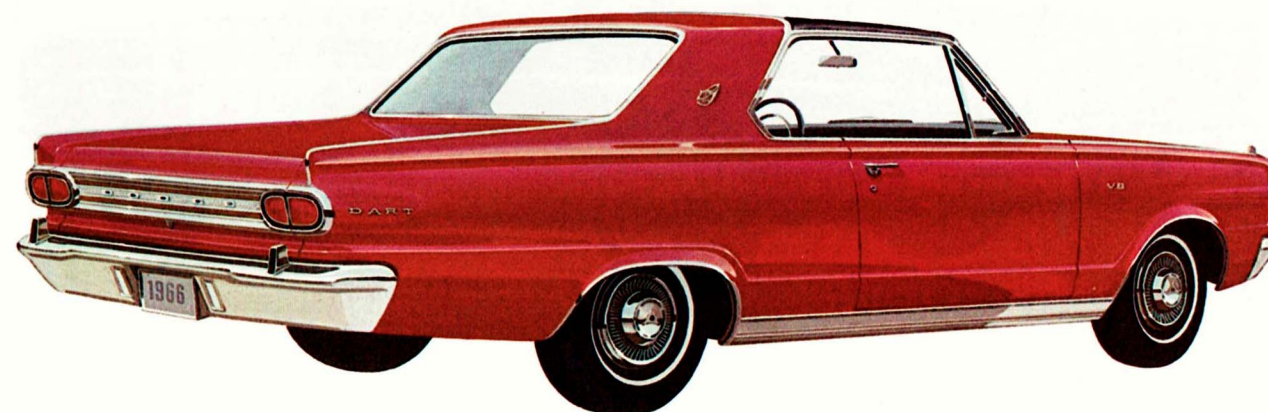
Dart GT convertible. Top of the Dart line for '66! Six or 273 V8 power.

STAMP OUT CRAMPED COMPACTS. UP WITH MAN-SIZED DART.

Down with the idea that compacts should be small. What they should be is nimble and economical. They should also be roomy and zoomy. (Who in the world ever started that silly idea that compact owners are all undersized, anyway?) So turn loose the rebel in you. Fire up that snarl under the hood. Head out from the herd—go Dodge Dart in '66. If this car has what you want, the Dodge Rebellion wants you!



Dart GT interior. All-vinyl bucket seats. Plenty of stretch-out comfort. Center console is optional, at extra cost.



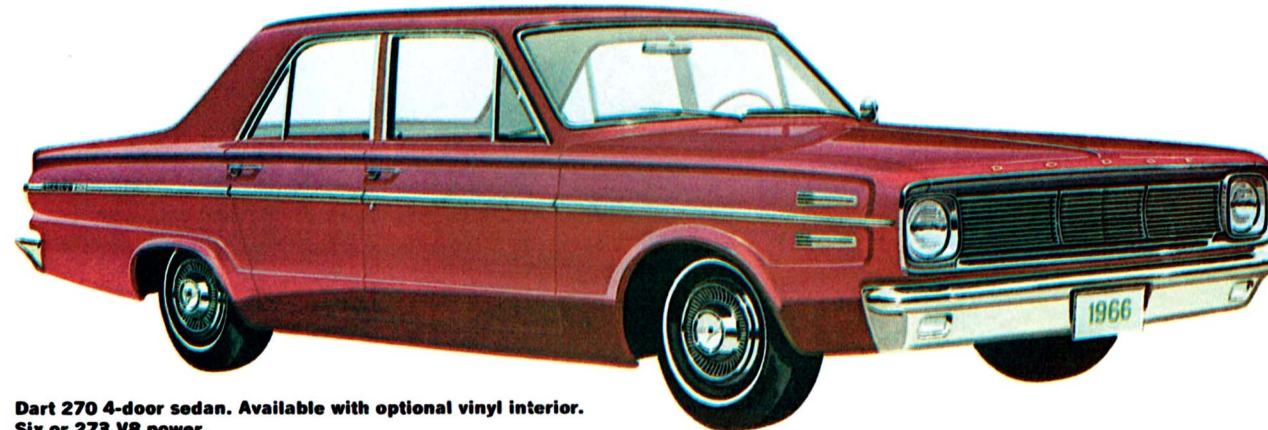
Dart GT 2-door hardtop. Six or 273 V8 power. Only Dart model offering optional vinyl roof covering.



Dart 270 convertible. Six or 273 V8 power.



Dart 270 2-door hardtop. Six or 273 V8 power.

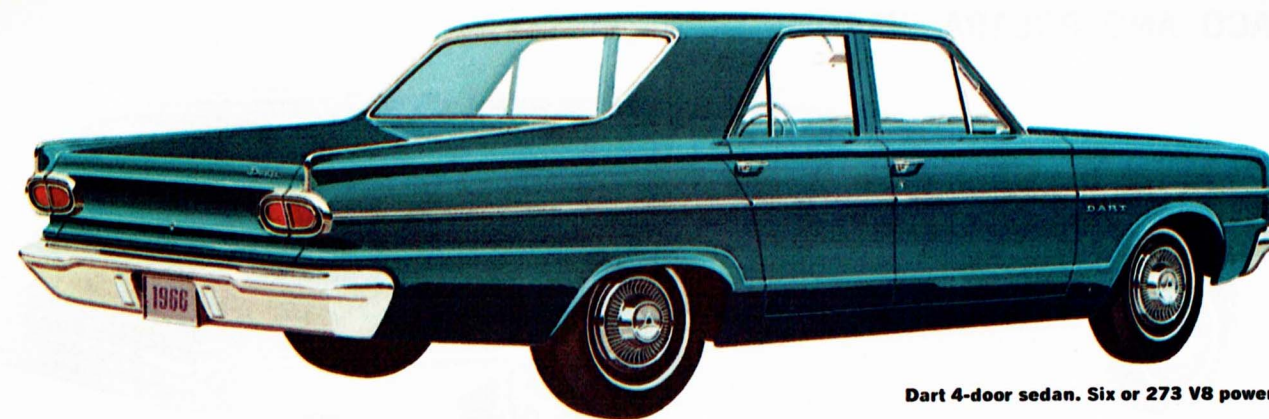


Dart 270 4-door sedan. Available with optional vinyl interior. Six or 273 V8 power.



Dart 270 2-door sedan. Six or 273 V8 power.

DART 270 SERIES Your greatest choice of body styles.



Dart 4-door sedan. Six or 273 V8 power.



Dart 2-door sedan. Six or 273 V8 power.

DART SERIES Lowest priced Darts of all.

DART STANDARD EQUIPMENT

Cloth-and-vinyl trim, all sedans ■ All-vinyl trim, hardtops, wagons, convertibles ■ Color-keyed rubber floor mats (Dart) ■ Full carpeting (270 & GT) ■ Padded dash ■ Cigarette lighter ■ Full horn ring (270 & GT) ■ Heater/defroster ■ Glove box lock (convertibles) ■ Turn signals ■ Variable-speed windshield wipers ■ Windshield washers ■ Front bench seat with 2-way adjustment (Dart & 270) ■ Front bucket seats (GT) ■ Color-keyed seat belts, 2 front & 2 rear ■ Outside, left, rear view mirror ■ Backup lights ■ Power convertible top ■ Deep-skirt front and rear bumpers ■ Acrylic enamel finish ■ Deluxe wheel covers (GT) ■ Sill moulding (GT).

DART DIMENSIONS

(Wagon dimensions in brackets.) Wheelbase, 111.0" (106.0"). Overall length, 196.3" (190.2"). Width, 70.8" (70.7"). Tread, front/rear, 55.9"/55.6". Station wagon loading dimensions: interior length, front seatback to closed tailgate, 83.8". Maximum rear opening height, 26.1"; width, at floor, 44.3". Width between wheelwells, 43.5". Maximum cargo volume, 68.3 cu. ft.

DART ENGINES

170 Six (1-bbl.), 101 hp. Standard on 6-cyl. models. Uses regular fuel. 273 V8 (2-bbl.), 180 hp. Standard on 8-cyl. models. Uses regular fuel.

225 Six (1-bbl.), 145 hp. Optional on 6-cyl. models. Uses regular fuel.

273 V8 (4-bbl.), 235 hp. Optional on 8-cyl. models. N.A. station wagons. Requires premium fuel.

DART TRANSMISSIONS

3-speed manual. Standard on all Dart models. N.A. with 273 (4-bbl.) V8. Shift lever mounted on steering column.

3-speed TorqueFlite automatic, with internally actuated parking sprag. Optional, at extra cost on all Dart models. Aluminum housing. Water-cooled. Column-mounted selector lever (except Dart GT with optional center console).

4-speed manual. Available with Dart 273 V8 engines only. Optional, at extra cost. Shift lever is floor-mounted. (Console-mounted in GT models with optional center console.) All four forward speeds are synchronized. Positive reverse-lockout feature is new for '66.

DART OPTIONS AND ACCESSORIES

Performance:

225 Six engine ■ 273 V8 (4-bbl.) (N.A. wagons) ■ TorqueFlite automatic transmission ■ 4-speed manual transmissions (V8s only) ■ Sure Grip differential ■ Rallye Pack ■ Trailer towing package (Ask your Dealer for a Dodge trailer towing brochure) ■ Heavy-duty front and rear suspension (includes sway bar) ■ 16-to-1 ratio manual steering assembly ■ Disc brake package.

Comfort and Convenience:

Air conditioning (N.A. with 170 Six or 273 V8 with 3-speed manual transmission) ■ Power brakes ■ Power steering ■ Tinted windshield or windshield and windows ■ Music Master radio ■ Electric tailgate window* ■ Air deflectors* ■ Roof luggage rack* ■ Center console** ■ Retractable seat belts ■ Glare-resistant inside mirror ■ Outside, left, remote-control mirror ■ Emergency flasher.

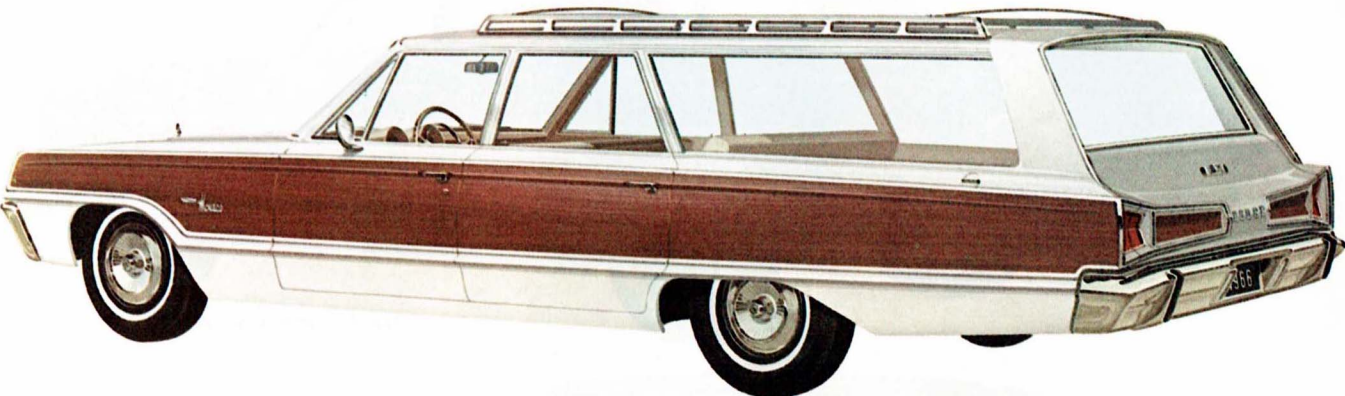
*Station wagons only.

**GT models only. N.A. with 3-speed manual or column-mounted TorqueFlite selector lever.

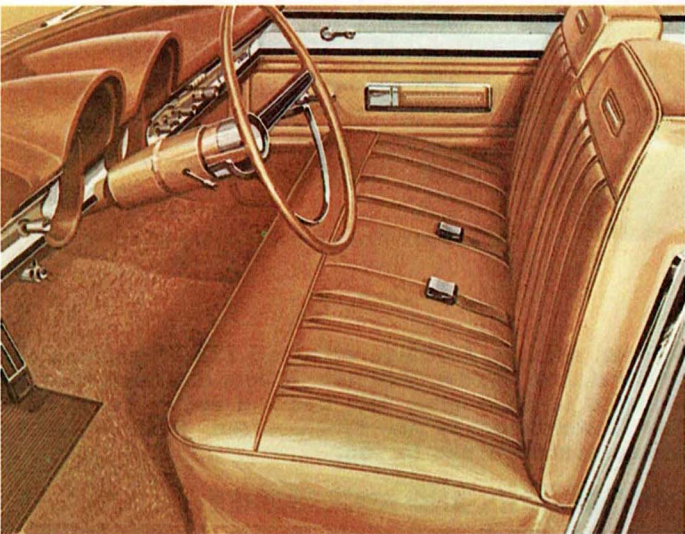
Appearance:

White sidewall tires ■ Two-tone paint (sedans & wagons) ■ White or black Levant-grain vinyl roof covering (GT hardtop only) ■ Front & rear bumper guards ■ Deluxe wheel covers (std. on GT models) ■ All-vinyl interior trim (270 4-dr. sedan only) (std., GT models, all wagons, 270 hardtop and convertible) ■ Full horn ring (std., GT and Dart 270) ■ Wood-grain steering wheel (GT and 270 models only).

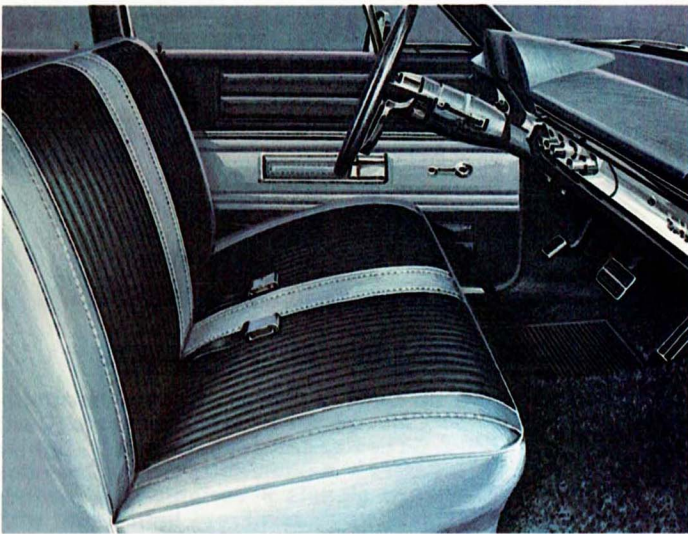
MONACO AND POLARA WAGONS



Monaco station wagon. Finest wagon Dodge builds. 121-inch wheelbase, simulated walnut paneling, 383 V8 power are standard. 2- and 3- seat models.



Monaco all-vinyl interior. Pull-down center armrest, in front seat, is standard.



Polara wagon interior, all-vinyl.



Polara station wagon. Both 2- and 3- seat models. 121" wheelbase, 383 V8 power.

MAKE A RUMPUS ABOUT ROOM IN YOUR NEXT WAGON.

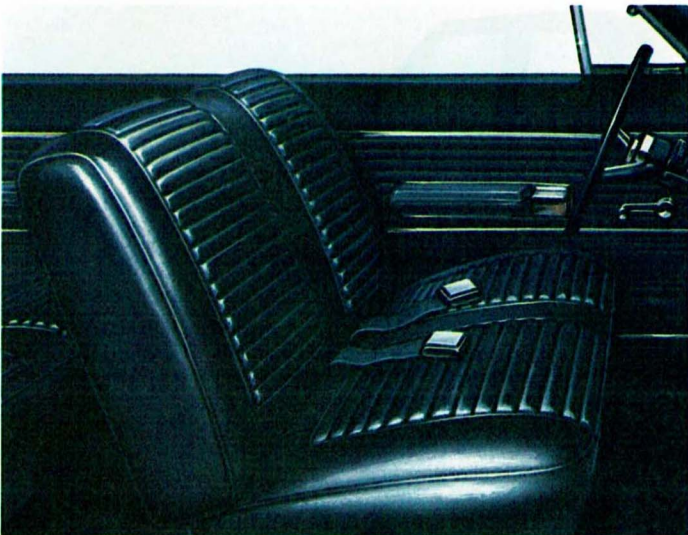
You and your rebel crew will need lots of room to swing. Polara and Monaco wagons give you a lot more than most. So c'mon inside and look over the accommodations. First-cabin all the way. Join the big shooters packing big Dodge Monaco and Polara wagons this year.

See Monaco and Polara wagon specifications on page 9.

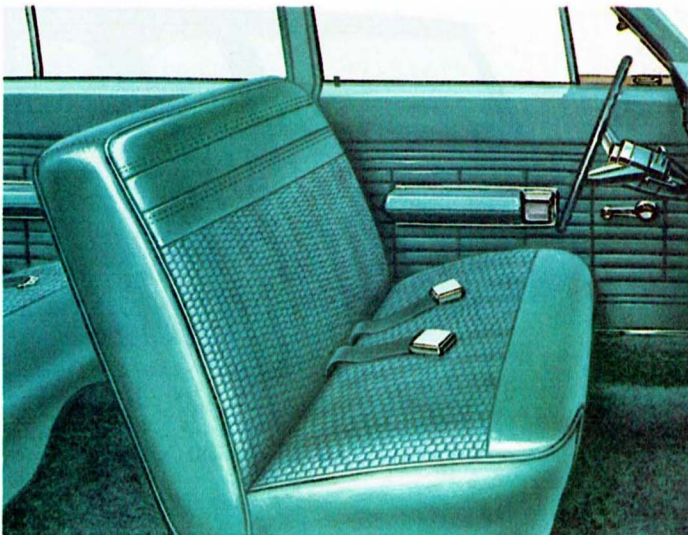
CORONET WAGONS



Coronet 440 wagon. Available with 6 and V8 power in 2-seat model; V8 power in 3-seat model.



Coronet 440 wagon interior, all-vinyl.



Coronet Deluxe wagon interior, all-vinyl.



Coronet Deluxe wagon. Available in 2-seat model only. 6 or V8 power.

BREAK YOUR "SEDAN HABIT."

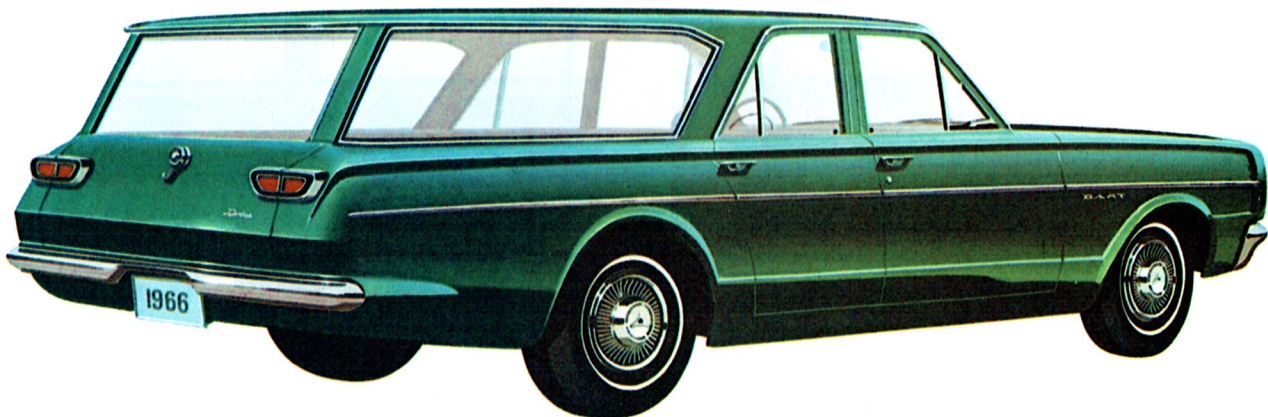
Is this your year to switch to a station wagon? Never a better time. Here's everything that makes Coronet a great buy—wrapped up in a station wagon second to none. And just the right size for all the kids and cargo you'll want to carry. Drive the newest wagon in the world—Coronet '66—2 Series (Coronet 440 and Coronet Deluxe)—3 wagon models.

See Coronet wagon specifications on page 15.

DART WAGONS



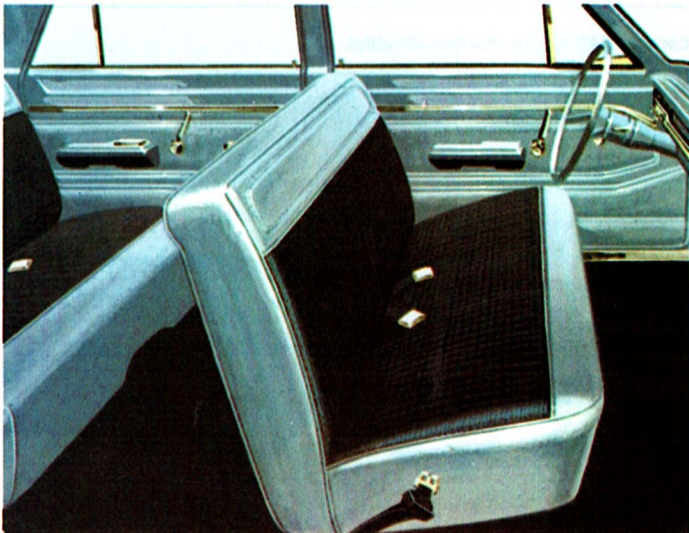
Dart 270 wagon. 6 or 273 V8 power. 2-seat model only.



Dart wagon. 6 or 273 V8 power. 2-seat model only. Lowest priced Dodge wagon for 1966.



Dart 270 wagon interior. All-vinyl. Carpeting is standard.



Dart wagon interior. All-vinyl.

DART WAGONS:

Carry a lot more cargo than their outside dimensions lead you to believe. Fun to drive. Easy to park. They're among the thriftiest wagons you can buy anywhere!



Dodge Sportsman wagons make ideal companions for your family fun.



Dodge Custom Sportsman.



Dodge Sportsman.

DODGE SPORTSMAN WAGONS WORK AND PLAY WITH EQUAL EASE!

Dodge Sportsman wagons are probably the most versatile vehicles you can buy. Interiors can be converted for all kinds of outdoor fun. Hunting, fishing, camping, or just going with your family. And the same Sportsman wagons can easily double as tough, hardworking, penny-pinching business partners for many kinds of work. Dodge Sportsman wagons are the only wagons in their field offering V8 power. (101 hp. Six is standard. 140 hp. Six is optional. So is the 174 hp. V8.) Full-foam bucket seats (two in front) are standard equipment. Easily removable 2nd and 3rd bench-type seats are optional, at extra cost.

Other popular options include 14- or 15-inch wheels, automatic transmission, auxiliary heater for rear compartment.

SPORTSMAN DIMENSIONS:
Wheelbase, 90.0" ■ Overall length, 171.0" ■ Overall width, 78.6" ■ Tread (front/rear), 60.3"/60.1" (with standard equipment) ■ Max. inside width, 67.7" ■ Width, between wheelwells, 48.8" ■ Height, inside, 52.1" ■ Height, side and rear doors, 47.4" ■ Width, side and rear doors, 51.5" ■ Cargo room, 213 cu. ft. ■ Ask your Dealer for a free copy of special Dodge Sportsman wagon catalog.



Isn't it time you Joined the Dodge Rebellion?

HERE'S HOW DODGE'S 5-YEAR, 50,000-MILE ENGINE AND DRIVE TRAIN WARRANTY PROTECTS YOU:

Chrysler Corporation confidently warrants all of the following vital parts of its 1966 cars for 5 years or 50,000 miles, whichever comes first, during which time any such parts that prove defective in material and workmanship will be replaced or repaired at a Chrysler Motors Corporation Authorized Dealer's place of business without charge for such parts or labor: engine block, head and internal parts, intake manifold, water pump, transmission case and internal parts (excepting manual clutch), torque converter, drive shaft, universal joints, rear axle and differential, and rear wheel bearings. ☐

REQUIRED MAINTENANCE: The following maintenance services are required under the warranty—change engine oil every 3 months or 4,000 miles, whichever comes first; replace oil filter every second oil change; clean carburetor air filter every 6 months and replace it every 2 years; and every 6 months furnish evidence of this required service to a Chrysler Motors Corporation Authorized Dealer and request him to certify receipt of such evidence and your car's mileage. Simple enough for such important protection.

All product illustrations and specifications herein are based on authorized information. Although all descriptions are believed correct at publication approval, accuracy cannot be guaranteed. Some of the equipment shown on product illustrations is optional, at extra cost. Dodge Division reserves the right to make changes from time to time, without notice or obligation, in prices, specifications, colors and materials, and to change or discontinue models. ☐ 1966 Dodge Full Line Catalog Saver 81-205-6033 ☐ Little in U.S.A. 8/65.



DODGE DIVISION



CHRYSLER
MOTORS CORPORATION



Isn't it time you Joined the Dodge Rebellion?

HERE'S HOW DODGE'S 5-YEAR, 50,000-MILE ENGINE AND DRIVE TRAIN WARRANTY PROTECTS YOU:

Chrysler Corporation confidently warrants all of the following vital parts of its 1966 cars for 5 years or 50,000 miles, whichever comes first, during which time any such parts that prove defective in material and workmanship will be replaced or repaired at a Chrysler Motors Corporation Authorized Dealer's place of business without charge for such parts or labor: engine block, head and internal parts, intake manifold, water pump, transmission case and internal parts (excepting manual clutch), torque converter, drive shaft, universal joints, rear axle and differential, and rear wheel bearings. ☐ **REQUIRED MAINTENANCE:** The following maintenance services are required under the warranty—change engine oil every 3 months or 4,000 miles, whichever comes first; replace oil filter every second oil change; clean carburetor air filter every 6 months and replace it every 2 years; and every 6 months furnish evidence of this required service to a Chrysler Motors Corporation Authorized Dealer and request him to certify receipt of such evidence and your car's mileage. Simple enough for such important protection.

All product illustrations and specifications herein are based on authorized information. Although all descriptions are believed correct at publication approval, accuracy cannot be guaranteed. Some of the equipment shown on product illustrations is optional, at extra cost. Dodge Division reserves the right to make changes from time to time, without notice or obligation, in prices, specifications, colors and materials, and to change or discontinue models. ☐ 1966 Dodge Full Line Catalog Saver 81-205-6033 ☐ Lithe in U.S.A. 8/65.



DODGE DIVISION



CHRYSLER
MOTORS CORPORATION

Listen. Those sounds you hear are habits breaking. Old ties snapping. Records falling. They're the happy sounds of the Dodge Rebellion. People demanding more "hot" in their hot cars, more "big" in their big cars, more "new" in their new cars. Swingers switching to Dodge. Is Dodge '66 fresh enough for you? Are you young enough for Dodge '66? Come along. Dodge has big plans for you!

1966 DODGE MONACO POLARA CORONET DART