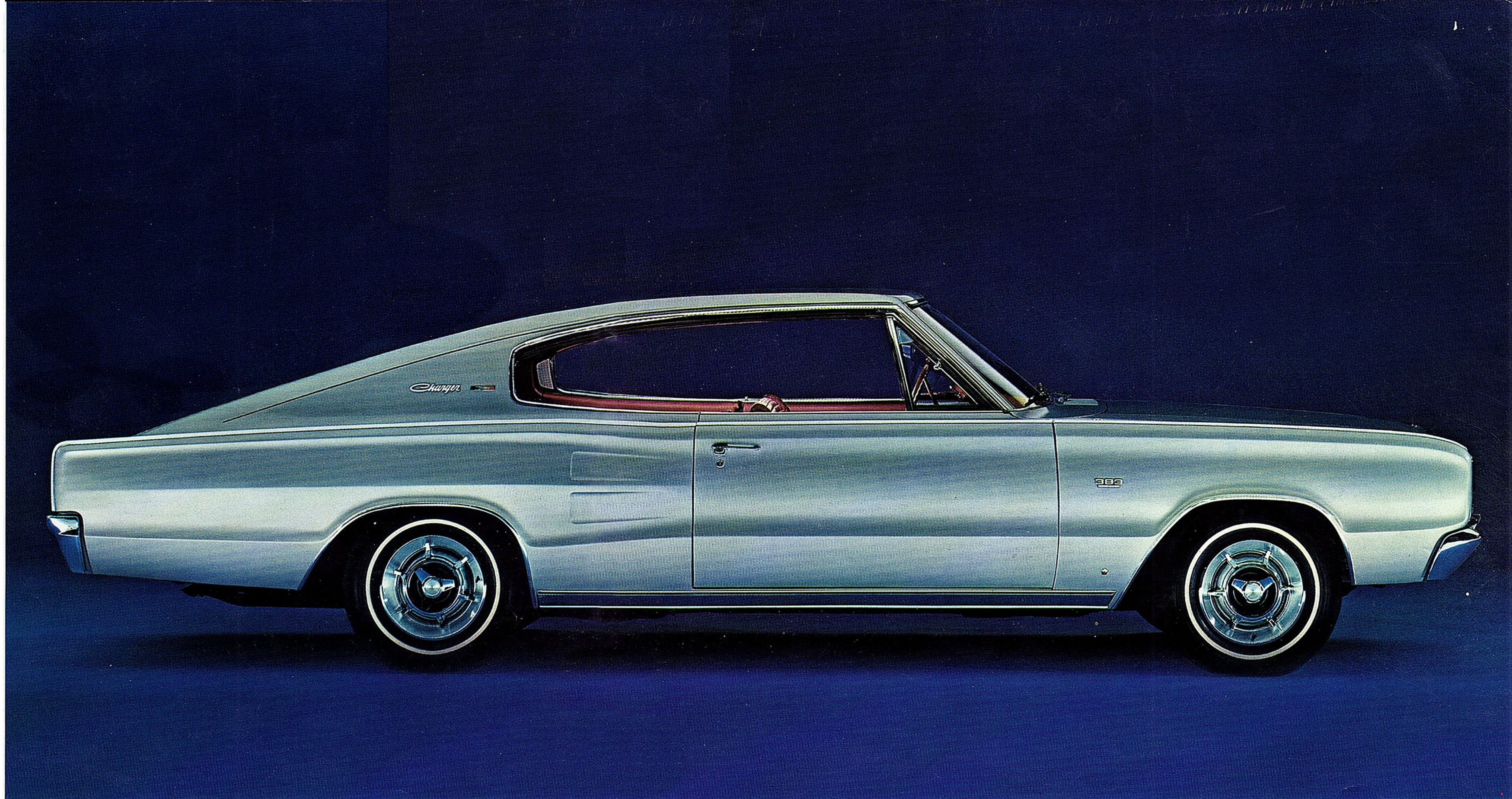
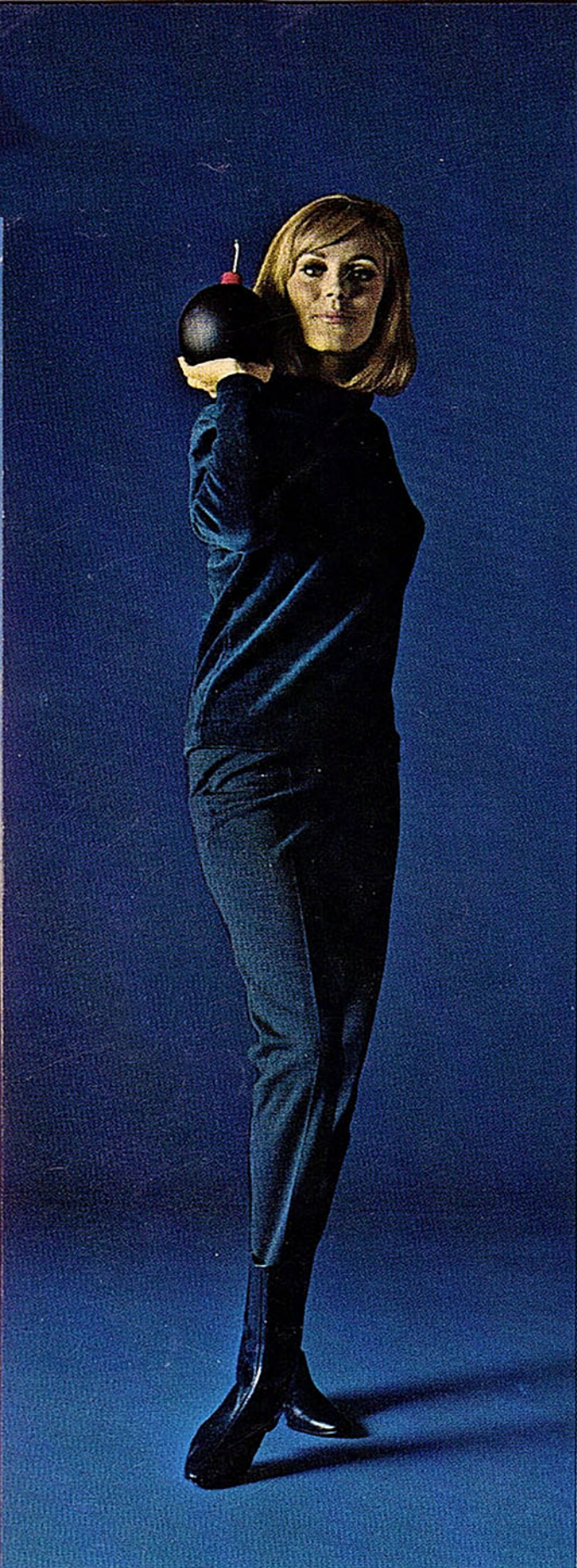


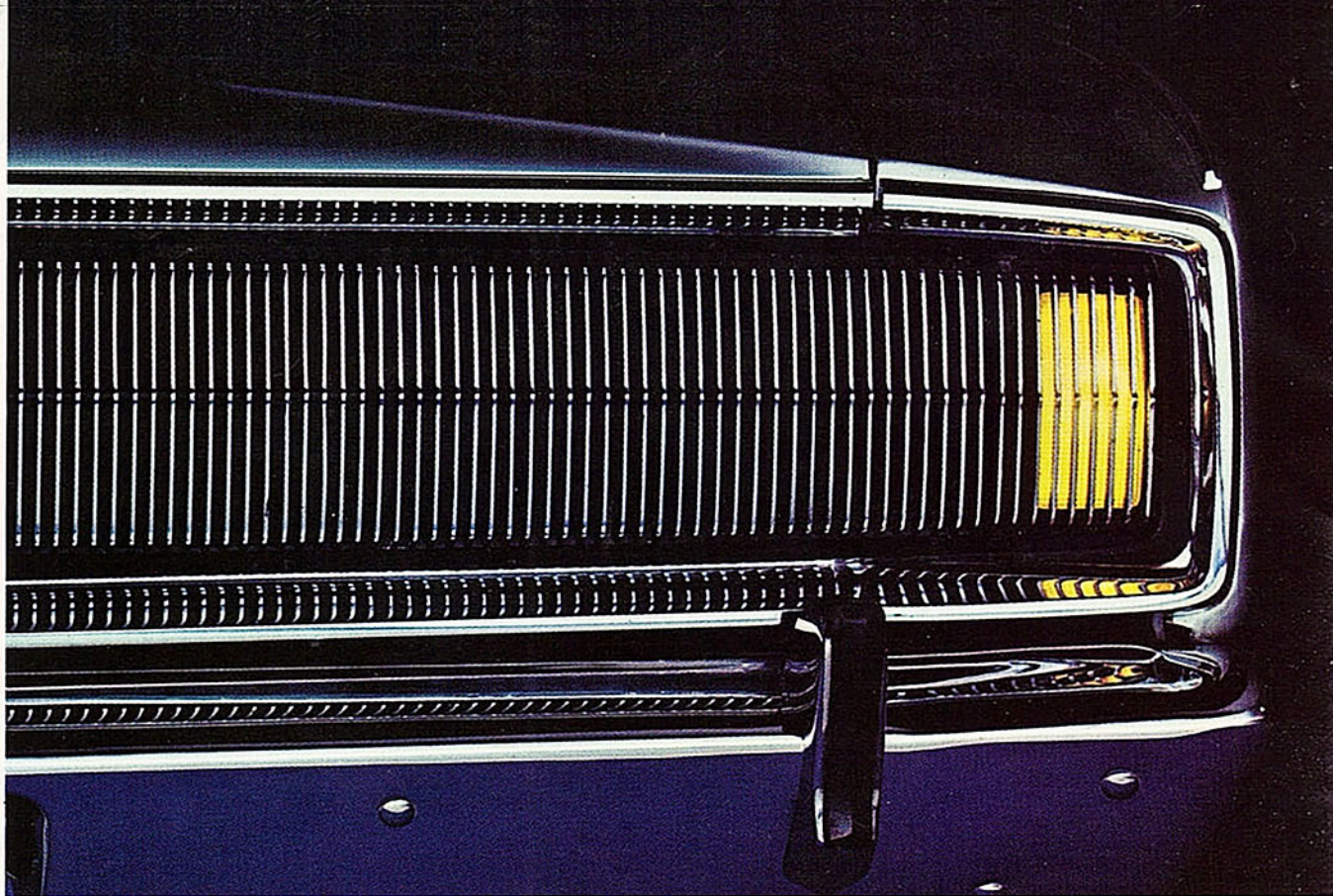


THE LEADER OF THE DODGE REBELLION

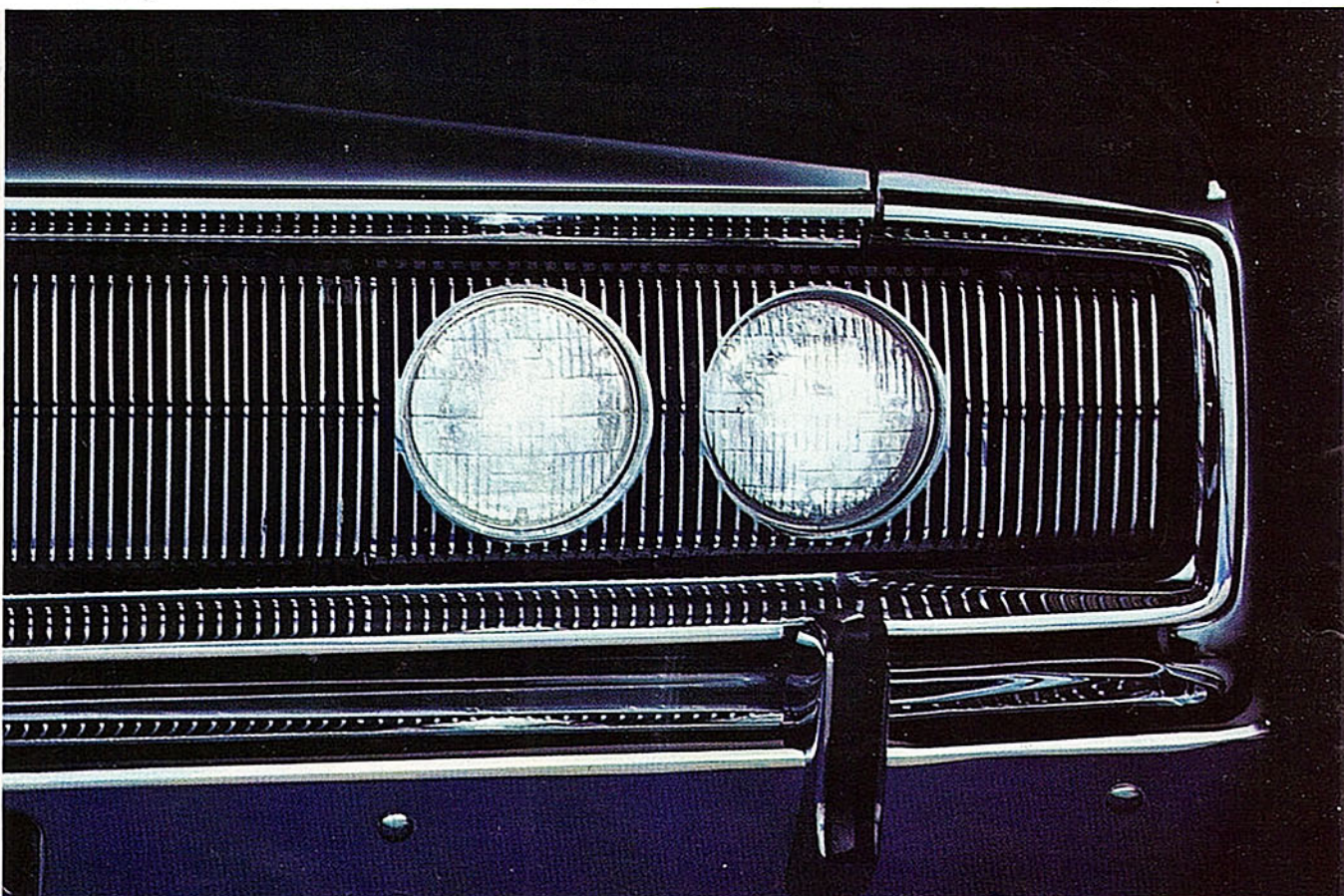


DOWN WITH DREAM CARS
THAT NEVER MADE IT to the
assembly line. Up with exciting new
Dodge Charger!

THIS IS NO DREAM CAR. It's a real "take-me-home-and-let's-stir-things-up-a-bit" automobile.
It's Dodge Charger, the fabulous new fastback that made it all the way from the designer's drawing board
to your driveway with all the excitement and all the fresh ideas left in.



A luxury touch—concealed turn signals. But where are the headlights?

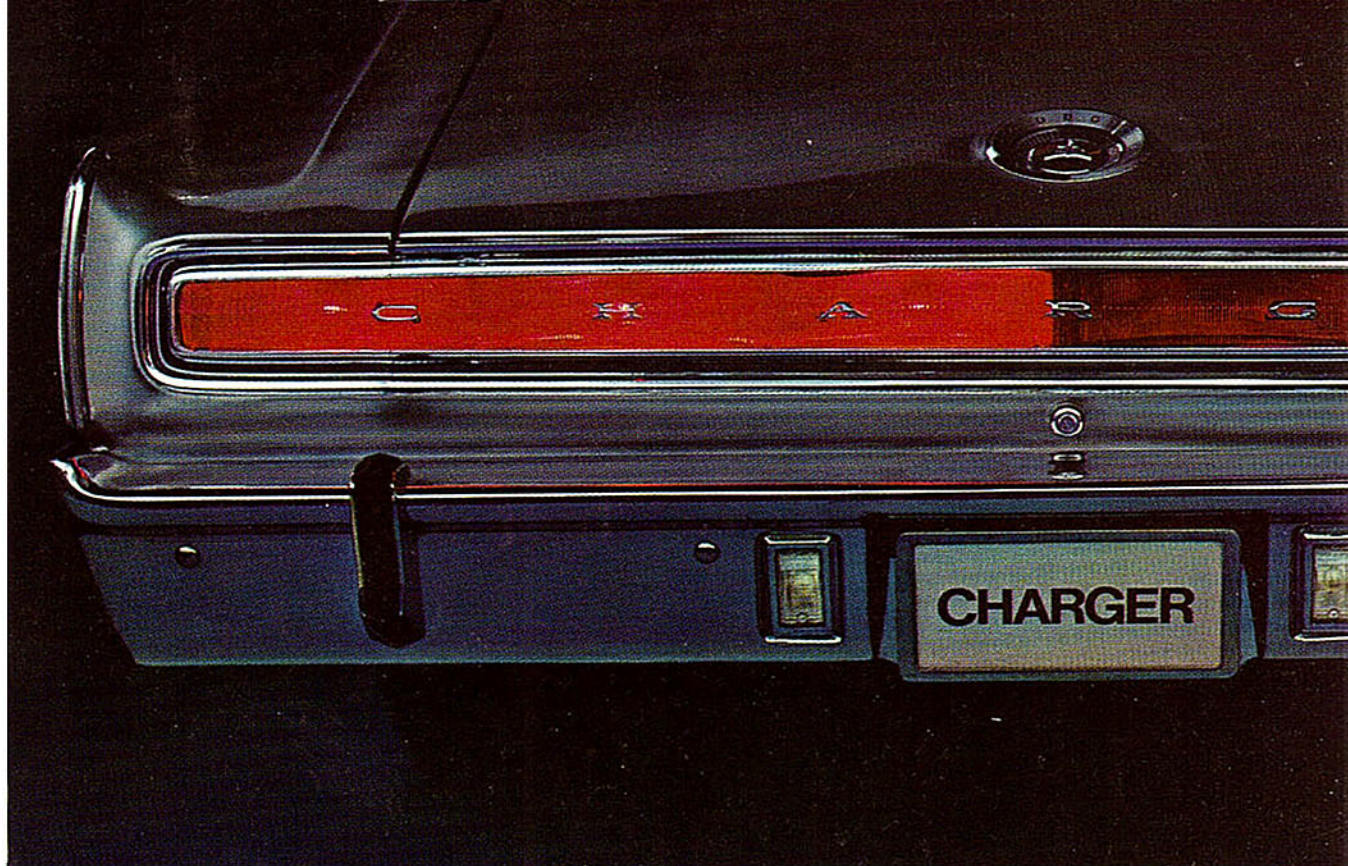


THOUGHT YOU'D NEVER ASK! Just pull the switch once—Charger's lights rotate and turn on automatically. You'd expect this kind of feature on a luxury car. And Charger doesn't disappoint you.

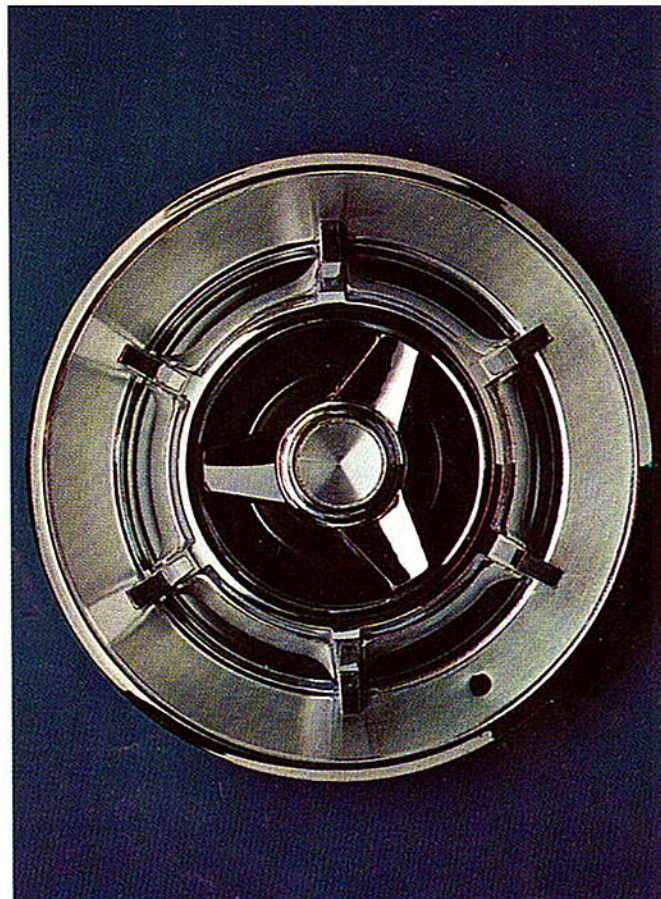


PLANT ONE OF THESE IN YOUR DRIVEWAY. Watch your neighbors turn green. Charger's a luxury car that is nimble enough and quick enough and challenging enough to make you glad you can't afford a chauffeur. It's a lot of excitement in a package 17 feet long, 6 feet wide, and 4½ feet high. For you? Why not?

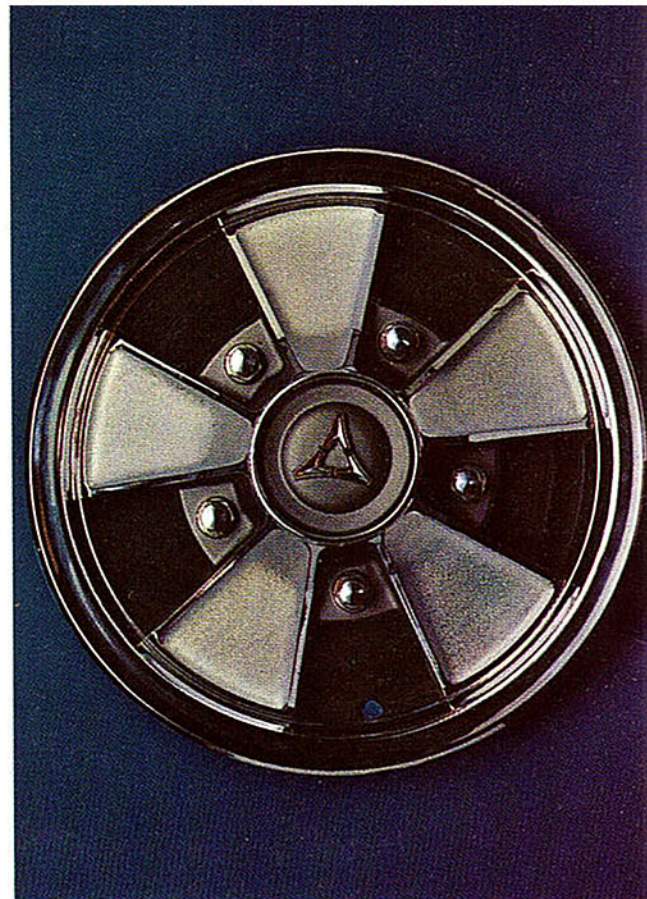
TIRED OF PLAIN-JANE HARDTOPS masquerading as luxury cars? Go Charger! The luxury's standard equipment.



Since when is a turn signal part of a car's personality? Since Charger.



OUR STANDARD WHEEL COVER looks like a custom option. So what does our custom wheel cover look like?



MAG-NIFICENT. Our custom wheel cover* looks like a real mag wheel. It just doesn't cost as much.

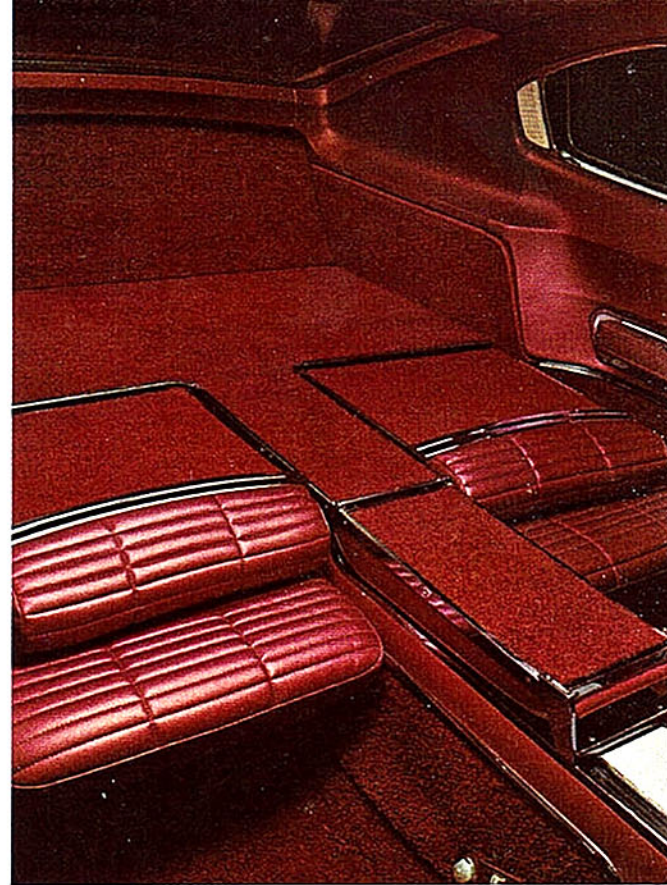
*Optional. at extra cost.



YOUR PERSONAL CAR. Docile in town. Dashing on the highways. Yet, you'd buy one because just looking at it does something to you. And driving it leaves you a different person than you used to be. Could you form a strong attachment for this car? We think so.



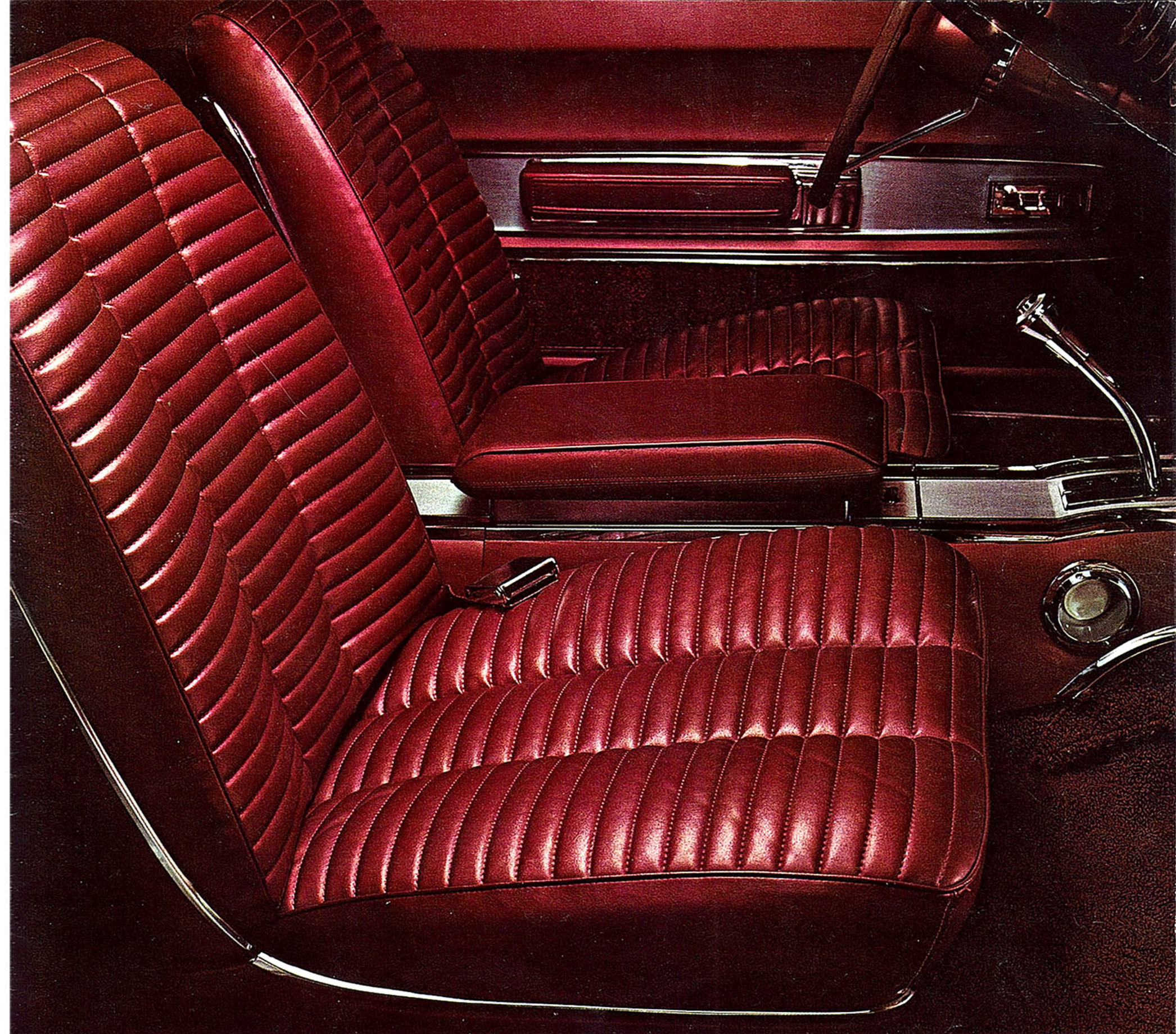
WHO SAYS YOU CAN'T carry skis* inside your car? Our sports wagon, Charger, says you can!



If you think a flip of the wrist can produce 4 x 7½ ft. of cargo space, you're right!



WHY SPOIL CHARGER'S PROFILE with a roof rack? You don't have to. Just fold down rear seatbacks and armrest and drop the hinged trunk panel. Presto. The best-looking sports wagon that ever hit the road.



IF THIS IS CHARGER'S STANDARD INTERIOR, WHAT'S OPTIONAL? Hardly anything. We give you four stitched, padded vinyl bucket seats and carpeting all the way from the brake pedal to the stoplight. Even the simulated wood-grain steering wheel and the console (with a light inside the compartment) are standard equipment on every Charger.

*Or toboggans. or fly rods. or kids in sleeping bags.

UNDER THE HOOD: Standard 318 V8 (2 bbl.). 230 hp. Single exhaust. Uses regular fuel. • Optional 361 V8 (2 bbl.). 265 hp. Single exhaust. Uses regular fuel. • Optional 383 V8 (4 bbl.). 325 hp. Dual exhausts. Requires premium fuel. • Optional 426 V8 (dual 4 bbl.). 425 hp. Dual exhausts. Dual rocker arm shafts. Hemispherical combustion chambers. Requires premium fuel.

CHARGER TRANSMISSIONS: 3-on-the-tree manual, standard with 318 V8 only. Not available with 361 V8, 383 V8, or 426 Hemi V8. • 3-speed TorqueFlite automatic, optional at extra cost with all Charger engines. Selector lever is mounted on center console, and has lockout button for moving selector out of "Drive" position. • 4-speed manual, with short throw shift pattern and positive reverse-lockout lever. All four forward speeds are synchronized. Shift lever is mounted on center console. Optional at extra cost with 361 V8, 383 V8, and 426 Hemi V8. Not available with 318 V8 engine.

SEE? WE TOLD YOU IT WAS FULL-SIZED. Wheelbase, 117.0". Overall length, 203.6". Width, 75.3". Tread: front, 59.5"; rear, 58.5". Overall height, 53.0". Interior storage dimensions: Rear seatback to security panel, 22.1"; to end of luggage compartment (panel folded flat), 61.2". Front seatback to security panel, 53.0"; to end of luggage compartment (panel folded flat), 92.1". Useable interior width at floor, 46.5". Width of rear deck lid opening, 43.9". • Suspension. Torsion bars, ball joints and sway bar in front. Asymmetrical leaf springs in the rear. Oriflow shock absorbers at each wheel. • Tires. 7.35 x 14 blackwall tires are standard with 318 V8, 361 V8 or 383 V8 engines. 7.75 x 14 Blue Streak tires standard with 426 Hemi V8. • Brakes. Hydraulic servo-contact, self-energizing, self-adjusting. Bonded linings. Total lining area, 195.2 sq. in. Chargers powered by 426 Hemi V8 are equipped with larger (234.1 sq.in.), nonadjusting hydraulic brakes.

THIS IS STANDARD:

Acrylic enamel in choice of 16 colors. Disappearing dual head lamps, synchronized with light switch. Concealed turn signals. Backup lights. Curved side glass. Cologne-grain vinyl interiors. Blue, saddle tan, red, white, citron-gold or black interior. Cigarette lighter. Glove box lock. Glove box light. Center console, with courtesy lights and illuminated compartment. Padded dash. Variable-speed windshield wipers (electric). Front and rear bucket seats, all foam-padded. Inside rear view mirror. Outside, left, rear view mirror. Rear seat pillar lights. Carpeting throughout, including trunk compartment floor. Hinged security panel, latched from trunk side, carpeted. Safety inside door handles. Seat belts: 2 sets front, 2 sets rear; color-keyed, with chrome buckles. Wind-



shield washers. Heater/defroster. Self-adjusting brakes. Front sway bar. 3-spoke wood-grained steering wheel. Internal hood-release handle. Tachometer, on instrument panel. Oil pressure gauge. Foot-operated parking brake with hand release lever. 318 V8 engine. 3-speed manual transmission. Long life chassis lubrication (good for 36,000 miles). Deep-dish wheel covers. Tinted back window.

THIS IS OPTIONAL:

PERFORMANCE • 361 V8 (2 bbl.). 383 V8 (4 bbl., dual exhaust). 426 V8 (Hemi, dual 4 bbl., dual exhaust). Automatic transmission. 4-speed manual transmission (361, 383, 426 V8s only). Power brakes. Power steering. Sure Grip differential. Heavy-duty suspension package (heavy-duty springs, shocks, front and rear). Trailer towing package.

COMFORT AND CONVENIENCE • Air conditioning (integral with heater). (N.A. with 361 V8 with 4-speed transmission.) Remote-control, outside rear view mirror. Inside, glare-resistant mirror. Electric window lifts. Tinted windshield or windshield and windows. Retractable seat belts (front and rear). Transistorized radio. Trunk compartment light. Emergency flasher. Parking brake warning light. Electric clock, mounted on center console.

APPEARANCE • Whitesidewall tires. Bumper guards, front and rear.

HERE'S HOW DODGE'S 5-YEAR, 50,000-MILE ENGINE AND DRIVE TRAIN WARRANTY PROTECTS YOU: Chrysler Corporation confidently warrants all of the following vital parts of its 1966 cars for 5 years or 50,000 miles, whichever comes first, during which time any such parts that prove defective in material and workmanship will be replaced or repaired at a Chrysler Motors Corporation Authorized Dealer's place of business without charge for such parts or labor: engine block, head and internal parts, intake manifold, water pump, transmission case and internal parts (excepting manual clutch), torque converter, drive shaft, universal joints, rear axle and differential, and rear wheel bearings.

REQUIRED MAINTENANCE: The following maintenance services are required under the warranty—change engine oil every 3 months or 4,000 miles, whichever comes first; replace oil filter every second oil change; clean carburetor air filter every 6 months and replace it every 2 years; and every 6 months furnish evidence of this required service to a Chrysler Motors Corporation Authorized Dealer and request him to certify receipt of such evidence and your car's mileage. Simple enough for such important protection.

Above warranty not applicable to cars equipped with 426 cu. in. Hemi V8 engines. See your dealer for warranty coverage on such cars.

All product illustrations and specifications herein are based on authorized information. Although all descriptions are believed correct at publication approval, accuracy cannot be guaranteed. Equipment listed as optional is available at extra cost. Illustrations include some optional equipment. Dodge Division reserves the right to make changes from time to time, without notice or obligation, in prices, specifications, colors and materials, and to change or discontinue models. 1966 Dodge Charger Catalog • 81-205-6034 • LITHO IN U.S.A. 11/65

Isn't it time you Joined the Dodge Rebellion?

DODGE DIVISION



CHRYSLER
MOTORS CORPORATION