

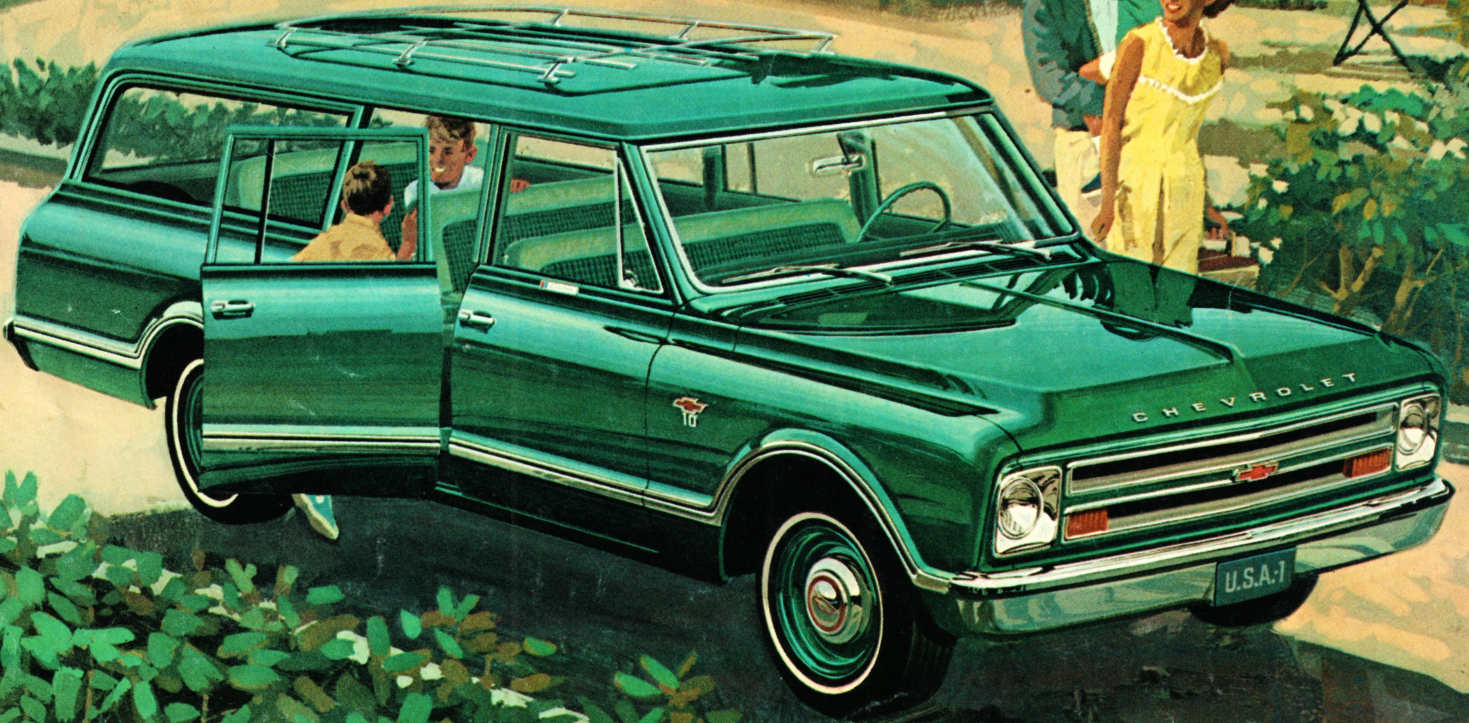
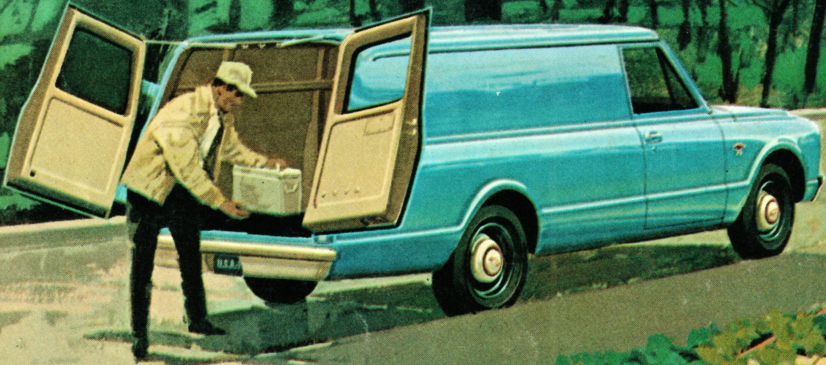
1967 CHEVROLET  
TRUCKS

# SUBURBANS AND PANELS

Series 10 & 20

Conventional and 4-Wheel Drive

**CHEVROLET**





Series CS/CE 10916 with station wagon-type rear doors.

Series CS/CE 20906 with panel-type rear doors.

## 1967 CHEVROLET SUBURBANS

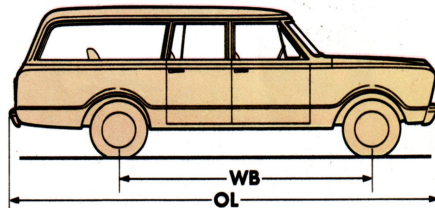
Now available in 1/2- and 3/4-ton capacities—with or without 4-wheel drive!

Now from Chevrolet a new dimension in utility—127 inches of wheelbase for a single-unit body designed to take the toughest jobs in stride. This versatile passenger-carrying, cargo-toting vehicle offers all the styling and stamina of America's number one light-duty trucks plus an even greater degree of riding comfort.

An extra side door behind the regular right-hand front door makes it easier to load and unload from the right side. Choice of double rear panel doors or counterbalanced tail-liftgate opening permits equally convenient access from the rear. Vinyl-coated hardboard headlining,

furnished in the comfort and convenience option, is full length to help insulate the body from heat of the sun's rays. Vinyl door and sidewall trim panels are included also.

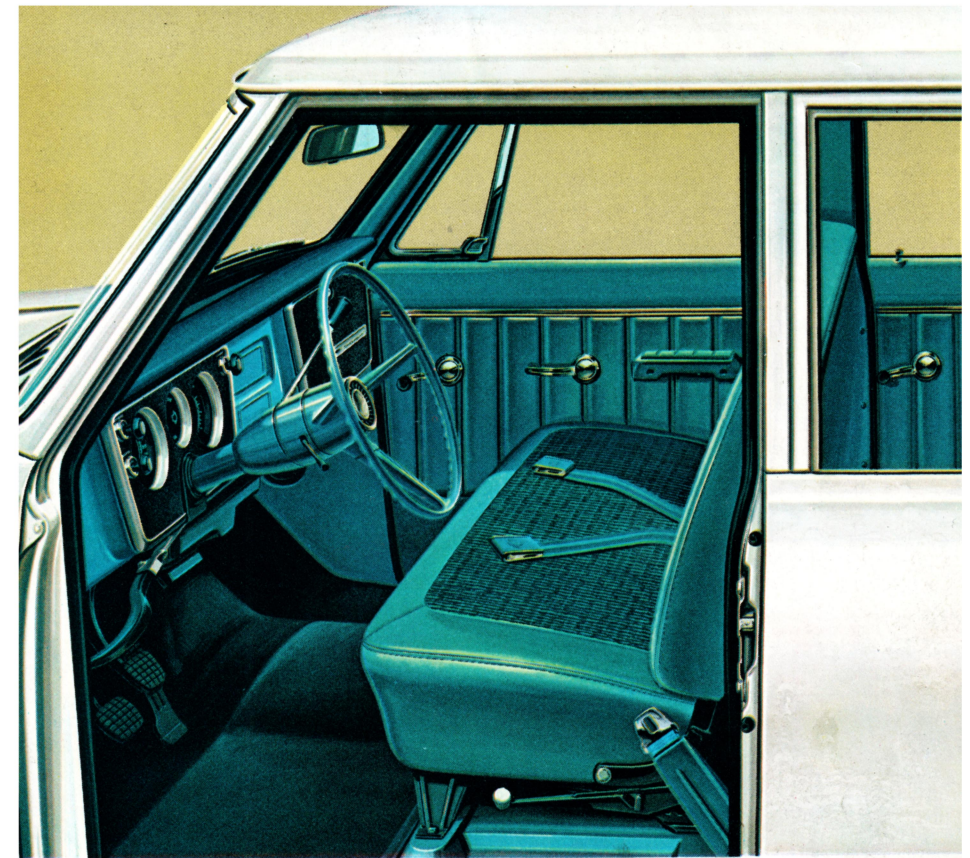
Chevrolet Suburbans come in 1/2-ton and 3/4-ton models with Six or V8 power and manual or automatic transmissions to provide the proper performance for the task at hand. Body may be mounted on Chevy's conventional rear-wheel-drive chassis or on the new low-silhouette 4-wheel-drive understructure—both are offered with a wide assortment of options to meet the needs of the most discerning buyer.



Model	WB	OL
CS/CE 10906-16		
CS/CE 20906-16		
KS/KE 10906-16 (4-Wheel Drive)	127"	215 1/2"
KS/KE 20906-16 (4-Wheel Drive)		

## NEW DRIVER COMFORT

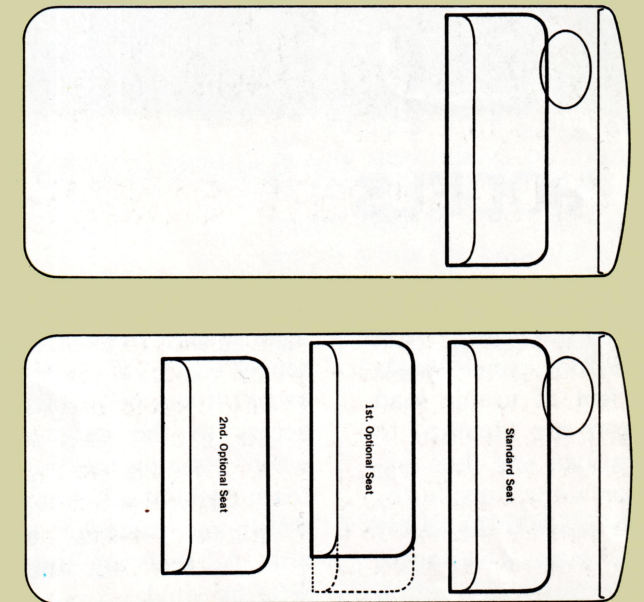
Standard seat, wide enough to seat three comfortably, is covered with easy-to-clean vinyl and features a thick foam pad over a foundation of steel springs. Padded instrument panel with recessed ignition switch, flat knobs and non-glare paint is standard. Optional custom equipment illustrated at right includes: Cloth/vinyl seat trim, fawn-colored floor mat, inserts for control knobs, Chevrolet nameplate on dispatch box door, armrests on both front doors, padded sunshade on right side, cigar lighter and embossed vinyl trim on front doors. Refer to back page for a complete listing of custom equipment.



## Plenty of room for up to 9 adults or 181 cubic feet of cargo!

Chevrolet's Suburban models offer spacious capacity for up to nine persons with two forward-facing seats for the rear compartment. These extra-cost options feature removable bench-type seats with full foam construction in both cushions and backrests plus integral armrests and ashtrays at each side of the seat. The first seat option provides room for three additional passengers with a single bench seat installed at the center or second position. The second seat option includes identical seats at the second and third positions. A black rubber floor mat with insulation is included for front portion of rear compartment floor when first seat option is ordered; an additional mat without insulation is provided when both the second and third seats are specified.

Chevrolet Suburbans provide 181 cubic feet of usable cargo space behind the standard 3-passenger driver's seat. Floor area measures 51 square feet with a full 50 inches between wheelhousings to accommodate standard 4x8 plywood or masonite with clearance to spare.



Optional second and third seats are easily accessible through extra side door. Rear portion of rear compartment floor is raised approximately six inches to provide excellent forward visibility for passengers in third seat. Seat belts are provided with all seats and floor-mounted retractors are included with front seat belts.



Series CS/CE 10916 with station wagon-type rear doors.

Series CS/CE 20906 with panel-type rear doors.

## 1967 CHEVROLET SUBURBANS

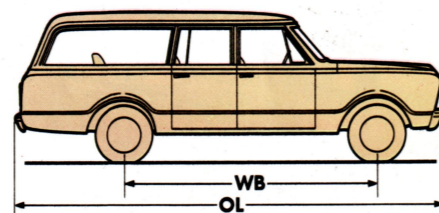
Now available in 1/2- and 3/4-ton capacities—with or without 4-wheel drive!

Now from Chevrolet a new dimension in utility—127 inches of wheelbase for a single-unit body designed to take the toughest jobs in stride. This versatile passenger-carrying, cargo-toting vehicle offers all the styling and stamina of America's number one light-duty trucks plus an even greater degree of riding comfort.

An extra side door behind the regular right-hand front door makes it easier to load and unload from the right side. Choice of double rear panel doors or counterbalanced tail-liftgate opening permits equally convenient access from the rear. Vinyl-coated hardboard headlining,

furnished in the comfort and convenience option, is full length to help insulate the body from heat of the sun's rays. Vinyl door and sidewall trim panels are included also.

Chevrolet Suburbans come in 1/2-ton and 3/4-ton models with Six or V8 power and manual or automatic transmissions to provide the proper performance for the task at hand. Body may be mounted on Chevy's conventional rear-wheel-drive chassis or on the new low-silhouette 4-wheel-drive understructure—both are offered with a wide assortment of options to meet the needs of the most discerning buyer.

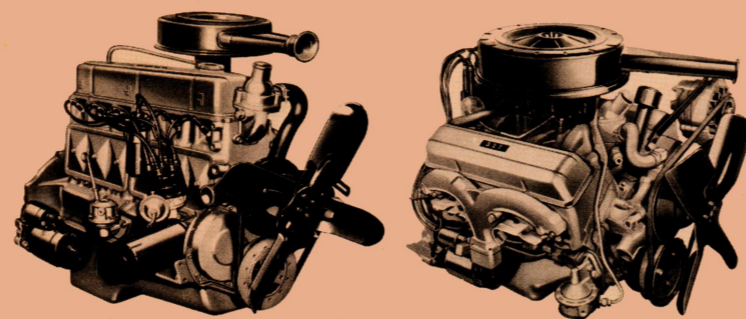


Model	WB	OL
CS/CE 10906-16		
CS/CE 20906-16		
KS/KE 10906-16 (4-Wheel Drive)	127"	215½"
KS/KE 20906-16 (4-Wheel Drive)		

©1967—Chevrolet Motor Division, General Motors Corporation

## HIGH TORQUE ENGINES

Through many millions of miles of owner use, Chevrolet engines have proved their superiority in all types of truck service. All are of valve-in-head design with hydraulic lifters, big valves and smooth porting for top performance and fuel economy. Precision cast alloy iron cylinder heads and blocks produce engines that are durable and low in weight. Full-pressure lubrication maintains protective oil film between critical moving parts of the engine regardless of engine speed. Positive crankcase ventilation protects against acid- and sludge-forming vapors by conducting them through the engine and out with the exhaust gases. All Chevy engines shown below are designed to operate on regular fuel.



250 Six

For 1967, this 155-hp 250 Six is standard for Chevrolet Suburban and panel models. Steel-backed babbitt or copper-lead alloy main and connecting rod bearings are precision fitted for long engine life. Inlet valve faces are coated with aluminum to retard formation of deposits.

283 V8

Order the 175-hp 283 V8 for those jobs which call for the extra snap of V8 power. Steel-backed babbitt bearings, used at both main and connecting rod journals, are of the replaceable insert type. Precision distributor adjustment permits dependable ignition, simplifies maintenance.

292 Six

Popular choice for extreme service needs. This 170-hp 292 Six has automatic rotators on exhaust valves faced with a tough cobalt-based alloy, precision-type premium aluminum bearings at main and connecting rod journals, big 70-gpm water pump for increased cooling.

327 V8

Here's a big 327 V8 rated at 220 hp for operations that call for the ultimate in power and efficiency. Engine features include premium aluminum bearings, aluminized inlet valves, automatic rotators on exhaust valves faced with cobalt-based alloy and 75-gpm water pump.

### Engine Performance Data

	250 Six	292 Six	283 V8	327 V8
Displacement	250 cu. in.	292 cu. in.	283 cu. in.	327 cu. in.
Compression Ratio	8.5 to 1	8.0 to 1	9.0 to 1	8.5 to 1
Gross Horsepower @ rpm	155 @ 4200	170 @ 4000	175 @ 4400	220 @ 4400
Net Horsepower @ rpm	125 @ 3800	153 @ 3600	145 @ 4200	177 @ 4000
Gross Torque, ft.-lbs. @ rpm	235 @ 1600	275 @ 1600	275 @ 2400	320 @ 2800
Net Torque, ft.-lbs. @ rpm	220 @ 1600	255 @ 2400	245 @ 2000	283 @ 2400

## CHASSIS AND DRIVE LINE

Conventional chassis for Chevrolet's Suburban and panel models are built to give a combination of outstanding riding qualities plus rugged truck durability. These qualities are achieved with owner-proved coil-spring front suspensions, weight-tailored rear suspensions, ladder-type frames, recirculating-ball steering gears and a careful selection of quality components throughout.

Extra safety is provided by a new dual master cylinder brake system. Through use of separate fluid reservoirs and pistons in the master cylinder for front and rear brakes, stopping power is retained in one system if fluid loss occurs in the other. Warning light on the instrument panel glows if there is low pressure in either system during brake application. Brakes are self-adjusting.

Two-stage coil springs at rear provide progressive springing action to give a smooth ride empty and firm support when fully loaded. Axle alignment is maintained by two members pivoted at a frame crossmember, plus a transverse arm mounted at the left frame side rail. Double-acting shock absorbers are standard at front and rear to aid in rebound control for a still smoother ride.

Two-piece drive shafts are of top-quality steel tubing, precision balanced to run true and smooth. Self-aligning center bearing and high-capacity universal joints are permanently sealed to simplify servicing requirements.

### FOUR-WHEEL-DRIVE FEATURES

Chevrolet's four-wheel-drive chassis are ruggedly built to take the abuses of the toughest terrain, and require a minimum of maintenance. They differ from the conventional chassis by having heavier frames, tapered-leaf spring front and rear suspensions, a front driving axle and drive shaft, plus a 2-speed transfer case attached to the transmission. This new location of the transfer case permits a much lower vehicle profile without appreciably affecting ground clearance.



## PANEL MODELS

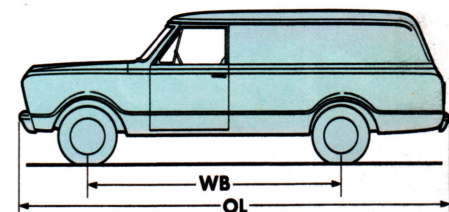
Up to 207-cubic-foot capacity in a unit with outstanding durability

The panel is offered in 1/2- and 3/4-ton capacities in a 9-foot panel length with 207 cubic feet of usable load space. Front doors are identical to those of the Suburban and thus feature multi-position stops, outside key locks, pushbutton inside locks, safety door latches and hinges. The double rear doors are held open by 2-position telescoping door checks and may be locked by an outside key. Glass for double rear doors is standard.

The standard individual driver's seat is adjustable fore and aft and the backrest, also adjustable, can be locked in position. Rear face of the backrest has a metal cover to protect

against load damage. Optional passenger seat is of similar construction except it can be pivoted forward for access to the cargo compartment when retaining lock is released. Full foam cushion seats for driver only or driver and passenger are also available. All seats are trimmed in long-wearing vinyl.

Power train combinations and chassis equipment for the Chevy panel models are the same as those listed for the Suburbans. Optional comfort and convenience equipment is similar for the two models except for the seating options. Fawn is the standard interior color.



Model	WB	OL
CS/CE 10905		
CS/CE 20905		
KS/KE 10905 (4-Wheel Drive)	127"	215½"
KS/KE 20905 (4-Wheel Drive)		

# SPECIFICATIONS

Series	10 (½ Ton)		20 (¾ Ton)		10 (½ Ton) 4-Wheel Drive		20 (¾ Ton) 4-Wheel Drive		
GVW Ratings (lbs.)	4400 to 5000		5500 to 7500		4600 to 5600		5700 to 7600		
Front Suspension	Standard	Optional	Standard	Optional	Standard	Optional	Standard	Optional	
	Independent Front Suspension				Tubular Driving Ratios: 3.73-10, 4.55-20				
	Axle—Type								
	—cap. (lbs.)		3000		3300		3500		
	Springs—Type		Coil		Tapered Leaf				
—cap. (lbs.)		1250	1350	1350	1500	1450	1750	1600	1750
Shock Absorbers		Standard	H. D. Opt.	Standard	H. D. Opt.	Standard	H. D. Opt.	Standard	H. D. Opt.
Stabilizer Bar		Optional							
Rear Suspension	Semi-Floating		Full-Floating		Semi-Floating		Full-Floating		
	—cap. (lbs.)		‡3500	‡‡5200	3300		5200		
	—Ratios		3.73	3.07, 4.11	4.57	4.11	3.73	4.57	
	Springs—Type		Coil		Tapered Leaf				
	—cap. (lbs.)		1250	2000	2000	3000	1800		1900
Tapered Leaf Aux. Springs—cap. (lbs.)		500		500					
Shock Absorbers		Standard	H. D. Opt.	Standard	H. D. Opt.	Standard	H. D. Opt.	Standard	H. D. Opt.
Engines	▲250 Six		▲250 Six		▲250 Six		▲250 Six		
	●283 V8		●283 V8		●283 V8		●283 V8		
Fuel Tank	Cap. (gal.)		24.5		24.5		24.5		
Transmissions	3-spd.		3-spd.		3-spd.		3-spd.		
			3-spd. OD		4-spd. CR				
			4-spd.		Powerglide				
			4-spd. CR		Turbo Hyd.				
			Powerglide						
		Turbo Hyd.							
Brakes	Hydraulic		Hydraulic		Hydraulic		Hydraulic		
Electrical	Battery		53 Amp.-Hr.		53 Amp.-Hr.		53 Amp.-Hr.		
	Generator		37 Amp.		37 Amp.		37 Amp.		
Frame	Section Modulus		2.98		3.71		3.48		
Steering	Manual		Manual		Manual		Manual		
Wheels & Tires	Disc Wheels—Type		6-stud		8-stud		6-stud		
	—rim width (in.)		5.50		5.25		5.50		
	Tubeless Tires—sizes		8.15-15		7-17.5		8.15-15		
	—sizes		6.50-16		8-17.5		7.75-15		
	—sizes		7-17.5				6.50-16		
	—sizes		7.75-15				7-17.5		
	Tube-Type Tires—sizes		7.75-15		7.00-16		7.75-15		
	—sizes		8.15-15		7.50-16		8.15-15		
—sizes		7.00-15				7.00-15			
—sizes		6.50-16				6.50-16			

*Equipment shown in blue optional at extra cost.*

▲250 Six standard on models CS10-20, KS10-20.

‡Also available with Positraction differential.

‡‡Also available with NoSPIN differential.

●283 V8 standard on models CE10-20, KE10-20.

## CUSTOM APPEARANCE OPTION

**Exterior items:** bright-metal moldings around grille openings and windshield. Bright-metal headlight bezels and front door ventipane assemblies. Distinctive Custom emblems on both front doors.

**Interior items:** Chevrolet nameplate on dispatch box door. Bright-metal control knob inserts and plastic insert in horn button. Fawn-colored floor mat for Suburban front compartment; matching rear compartment floor mats are also included when optional rear seats are specified in Suburban models.

## CUSTOM COMFORT & CONVENIENCE OPTION

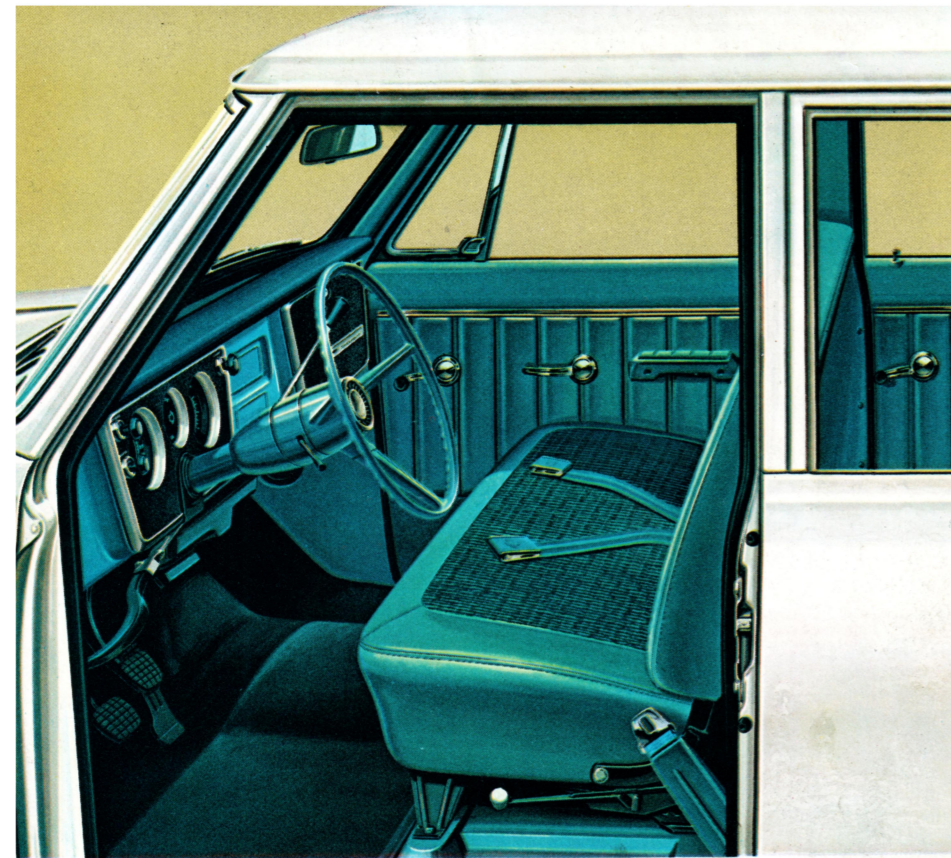
**Items for all models:** underbody coating, cowl insulation, cigar lighter, left-hand armrest and right-hand padded sunshade.

**Items for Suburbans only:** right-hand armrest; cloth/vinyl trim and full-foam cushion for front seat; vinyl trim panels on front doors, side door and body sidewalls; white hardboard headlining and a vinyl cover for spare tire. A choice of four interior colors (fawn, red, blue, green) may be specified. Floor mat color changes from fawn to selected interior color.

*All illustrations and specifications contained in this literature are based on the latest product information available at the time of publication. The right is reserved to make changes at any time in prices, colors, materials, equipment, specifications and models, and also to discontinue models. CHEVROLET MOTOR DIVISION OF GENERAL MOTORS CORPORATION, DETROIT, MICHIGAN. LITHO IN U.S.A.*

## NEW DRIVER COMFORT

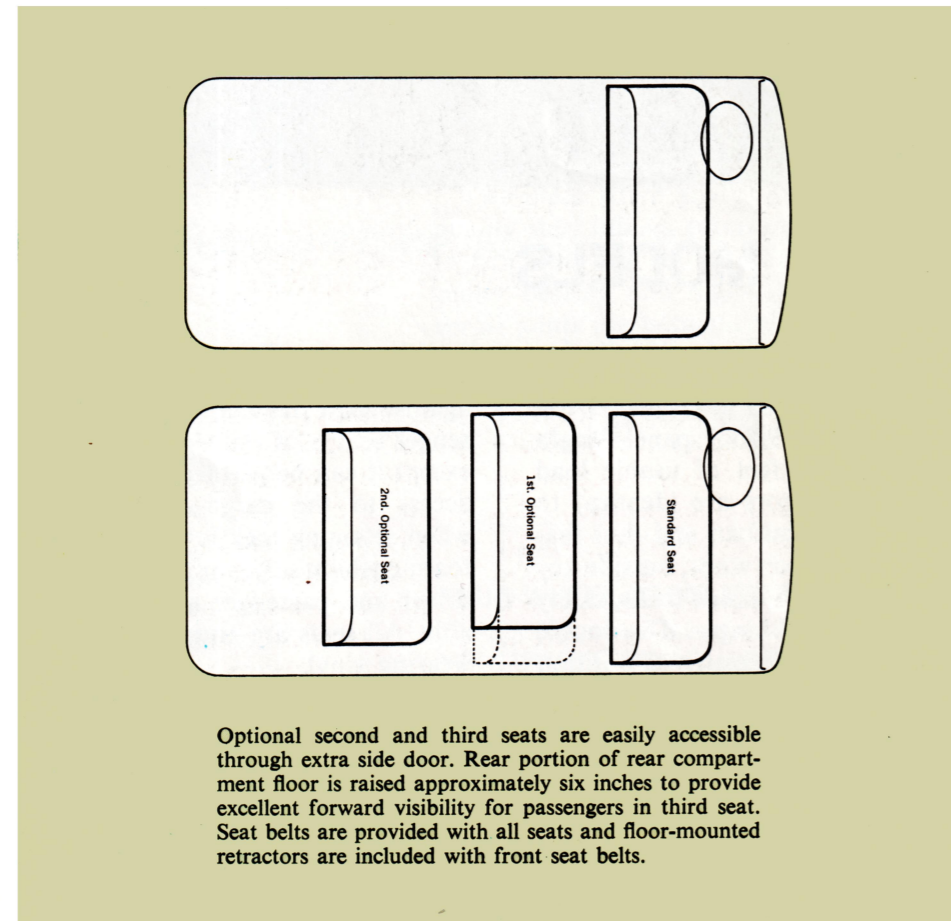
Standard seat, wide enough to seat three comfortably, is covered with easy-to-clean vinyl and features a thick foam pad over a foundation of steel springs. Padded instrument panel with recessed ignition switch, flat knobs and non-glare paint is standard. Optional custom equipment illustrated at right includes: Cloth/vinyl seat trim, fawn-colored floor mat, inserts for control knobs, Chevrolet nameplate on dispatch box door, armrests on both front doors, padded sunshade on right side, cigar lighter and embossed vinyl trim on front doors. Refer to back page for a complete listing of custom equipment.



## Plenty of room for up to 9 adults or 181 cubic feet of cargo!

Chevrolet's Suburban models offer spacious capacity for up to nine persons with two forward-facing seats for the rear compartment. These extra-cost options feature removable bench-type seats with full foam construction in both cushions and backrests plus integral armrests and ashtrays at each side of the seat. The first seat option provides room for three additional passengers with a single bench seat installed at the center or second position. The second seat option includes identical seats at the second and third positions. A black rubber floor mat with insulation is included for front portion of rear compartment floor when first seat option is ordered; an additional mat without insulation is provided when both the second and third seats are specified.

Chevrolet Suburbans provide 181 cubic feet of usable cargo space behind the standard 3-passenger driver's seat. Floor area measures 51 square feet with a full 50 inches between wheelhousings to accommodate standard 4x8 plywood or masonite with clearance to spare.



Optional second and third seats are easily accessible through extra side door. Rear portion of rear compartment floor is raised approximately six inches to provide excellent forward visibility for passengers in third seat. Seat belts are provided with all seats and floor-mounted retractors are included with front seat belts.

## SPECIFICATIONS

Series	10 (½ Ton)		20 (¾ Ton)		10 (½ Ton) 4-Wheel Drive		20 (¾ Ton) 4-Wheel Drive		
GVW Ratings (lbs.)	4400 to 5000		5500 to 7500		4600 to 5600		5700 to 7600		
Front Suspension	Axle—Type	Standard	Optional	Standard	Optional	Standard	Optional	Standard	Optional
	—cap. (lbs.)	2500		3000		3300		3500	3500
	Springs—Type	Coil		Coil		Tapered Leaf		Tapered Leaf	
	—cap. (lbs.)	1250	1350	1350	1500	1450	1750	1600	1750
Shock Absorbers	Standard	H. D. Opt.	Standard	H. D. Opt.	Standard	H. D. Opt.	Standard	H. D. Opt.	
Stabilizer Bar	Optional		Optional		Optional		Optional		
Rear Suspension	Axle—Type	Semi-Floating		Full-Floating		Semi-Floating		Full-Floating	
	—cap. (lbs.)	‡3500		‡‡5200		3300		5200	
	—Ratios	3.73	3.07, 4.11	4.57	4.11	3.73		4.57	
	Springs—Type	Coil		Coil		Tapered Leaf		Tapered Leaf	
—cap. (lbs.)	1250	2000	2000	3000	1800		1900	2500	
Tapered Leaf Aux. Springs—cap. (lbs.)	500		500		500		500		
Shock Absorbers	Standard	H. D. Opt.	Standard	H. D. Opt.	Standard	H. D. Opt.	Standard	H. D. Opt.	
Engines	▲250 Six	292 Six	▲250 Six	292 Six	▲250 Six	292 Six	▲250 Six	292 Six	
	●283 V8	327 V8	●283 V8	327 V8	●283 V8	327 V8	●283 V8	327 V8	
Fuel Tank	24.5		24.5		24.5		24.5		
Transmissions	3-spd.	3-spd.	3-spd.	4-spd.	3-spd.	4-spd.	3-spd.	4-spd.	
		3-spd. OD		4-spd. CR		4-spd.		4-spd.	
				Powerglide				Powerglide	
		4-spd. CR		Turbo Hyd.				Turbo Hyd.	
	Powerglide								
	Turbo Hyd.								
Brakes	Hydraulic		Hydraulic		Hydraulic		Hydraulic		
	Power	Power	Power	Power	Power	Power	Power		
Electrical	Battery	53 Amp.-Hr.	70 Amp.-Hr.	53 Amp.-Hr.	70 Amp.-Hr.	53 Amp.-Hr.	70 Amp.-Hr.	53 Amp.-Hr.	70 Amp.-Hr.
	Generator	37 Amp.	42, 61, 62	37 Amp.	42, 61, 62	37 Amp.	42, 61, 62	37 Amp.	42, 61, 62
Frame	Section Modulus		Section Modulus		Section Modulus		Section Modulus		
	2.98		3.71		3.48		3.48		
Steering	Manual		Manual		Manual		Manual		
	Power	Power	Power	Power	Power	Power	Power		
Wheels & Tires	Disc Wheels—Type	6-stud		8-stud		6-stud		8-stud	
	—rim width (in.)	5.50	5.0, 5.25, 6.0	5.25	5.0, 6.0	5.50	5.25, 5.5, 6.0	5.25	6.0
	Tubeless Tires—sizes	8.15-15	6.50-16	7-17.5	8-17.5	8.15-15	7.75-15	7-17.5	8-17.5
	—sizes		7-17.5				6.50-16		
	—sizes		7.75-15				7-17.5		
	Tube-Type Tires—sizes		7.75-15		7.00-16		7.75-15		7.00-16
	—sizes		8.15-15		7.50-16		8.15-15		7.50-16
	—sizes		7.00-15				7.00-15		
—sizes		6.50-16				6.50-16			

Equipment shown in blue optional at extra cost.  
▲250 Six standard on models CS10-20, KS10-20.

‡Also available with Positraction differential.  
‡‡Also available with NoSPIN differential.  
●283 V8 standard on models CE10-20, KE10-20.

### CUSTOM APPEARANCE OPTION

**Exterior items:** bright-metal moldings around grille openings and windshield. Bright-metal headlight bezels and front door ventipane assemblies. Distinctive Custom emblems on both front doors.

**Interior items:** Chevrolet nameplate on dispatch box door. Bright-metal control knob inserts and plastic insert in horn button. Fawn-colored floor mat for Suburban front compartment; matching rear compartment floor mats are also included when optional rear seats are specified in Suburban models.

### CUSTOM COMFORT & CONVENIENCE OPTION

**Items for all models:** underbody coating, cowl insulation, cigar lighter, left-hand armrest and right-hand padded sunshade.

**Items for Suburbans only:** right-hand armrest; cloth/vinyl trim and full-foam cushion for front seat; vinyl trim panels on front doors, side door and body sidewalls; white hardboard headlining and a vinyl cover for spare tire. A choice of four interior colors (fawn, red, blue, green) may be specified. Floor mat color changes from fawn to selected interior color.



1967 CHEVROLET TRUCKS

## SUBURBANS AND PANELS

Series 10 & 20

Conventional and 4-Wheel Drive



## SPECIFICATIONS

Series	10 (½ Ton)		20 (¾ Ton)		10 (½ Ton) 4-Wheel Drive		20 (¾ Ton) 4-Wheel Drive	
GVW Ratings (lbs.)	4400 to 5000		5500 to 7500		4600 to 5600		5700 to 7600	
Front Suspension	Standard	Optional	Standard	Optional	Standard	Optional	Standard	Optional
	Independent Front Suspension				Tubular Driving Ratios: 3.73-10, 4.55-20			
	Axle—Type		Coil		Tapered Leaf			
	—cap. (lbs.)		1350		1450		1600	
	Sprockets—Type		H. D. Opt.		H. D. Opt.		H. D. Opt.	
Rear Suspension	Standard	H. D. Opt.	Standard	H. D. Opt.	Standard	H. D. Opt.	Standard	H. D. Opt.
	Semi-Floating		Full-Floating		Semi-Floating		Full-Floating	
	—cap. (lbs.)		15200		3300		5200	
	—Ratios		3.07, 4.11		4.57		4.57	
	Sprockets—Type		Coil		Tapered Leaf			
Tapered Leaf Aux. Springs—cap. (lbs.)	1250		2000		1800		1900	
	500		500					
Engines	Standard	H. D. Opt.	Standard	H. D. Opt.	Standard	H. D. Opt.	Standard	H. D. Opt.
	▲250 Six	292 Six	▲250 Six	292 Six	▲250 Six	292 Six	▲250 Six	292 Six
Fuel Tank	24.5		24.5		24.5		24.5	
	Cap. (gal.)		24.5		24.5		24.5	
Transmissions	3-spd.		3-spd.		3-spd.		3-spd.	
	3-spd. OD		4-spd. CR					
	4-spd.		Powerglide					
	4-spd. CR		Turbo Hyd.					
	Powerglide							
Brakes	Hydraulic		Hydraulic		Hydraulic		Hydraulic	
	Power		Power		Power		Power	
Electrical	53 Amp.-Hr.		53 Amp.-Hr.		53 Amp.-Hr.		53 Amp.-Hr.	
	70 Amp.-Hr.		70 Amp.-Hr.		70 Amp.-Hr.		70 Amp.-Hr.	
Frame	37 Amp.		37 Amp.		37 Amp.		37 Amp.	
	42, 61, 62		42, 61, 62		42, 61, 62		42, 61, 62	
Steering	2.98		3.71		3.48		3.48	
	Section Modulus		Section Modulus		Section Modulus		Section Modulus	
Wheels & Tires	Manual		Manual		Manual		Manual	
	Power		Power		Power		Power	
	Disc Wheels—Type		8-stud		6-stud		8-stud	
	—rim width (in.)		5.0, 5.25, 6.0		5.0, 6.0		5.25, 5.5, 6.0	
	Tubeless Tires—sizes		7-17.5		8-17.5		7-17.5	
	—sizes		7-17.5		8-17.5		7-17.5	
	—sizes		7-17.5		7-17.5		7-17.5	
Tube-Type Tires—sizes	7-17.5		7-17.5		7-17.5		7-17.5	
	8-15-15		7-17.5		8-15-15		7-17.5	
	7-17.5		7-17.5		7-17.5		7-17.5	
	7-17.5		7-17.5		7-17.5		7-17.5	
	7-17.5		7-17.5		7-17.5		7-17.5	

Equipment shown in blue optional at extra cost.  
▲250 Six standard on models CS10-20, KS10-20.

‡Also available with Positraction differential.  
‡‡Also available with NoSPIN differential.  
●283 V8 standard on models CE10-20, KE10-20.

### CUSTOM APPEARANCE OPTION

**Exterior items:** bright-metal moldings around grille openings and windshield. Bright-metal headlight bezels and front door ventipane assemblies. Distinctive Custom emblems on both front doors.

**Interior items:** Chevrolet nameplate on dispatch box door. Bright-metal control knob inserts and plastic insert in horn button. Fawn-colored floor mat for Suburban front compartment; matching rear compartment floor mats are also included when optional rear seats are specified in Suburban models.

### CUSTOM COMFORT & CONVENIENCE OPTION

**Items for all models:** underbody coating, cowl insulation, cigar lighter, left-hand armrest and right-hand padded sunshade.

**Items for Suburbans only:** right-hand armrest; cloth/vinyl trim and full-foam cushion for front seat; vinyl trim panels on front doors, side door and body sidewalls; white hardboard headlining and a vinyl cover for spare tire. A choice of four interior colors (fawn, red, blue, green) may be specified. Floor mat color changes from fawn to selected interior color.



1967 CHEVROLET  
TRUCKS

## SUBURBANS AND PANELS

Series 10 & 20  
Conventional and 4-Wheel Drive

