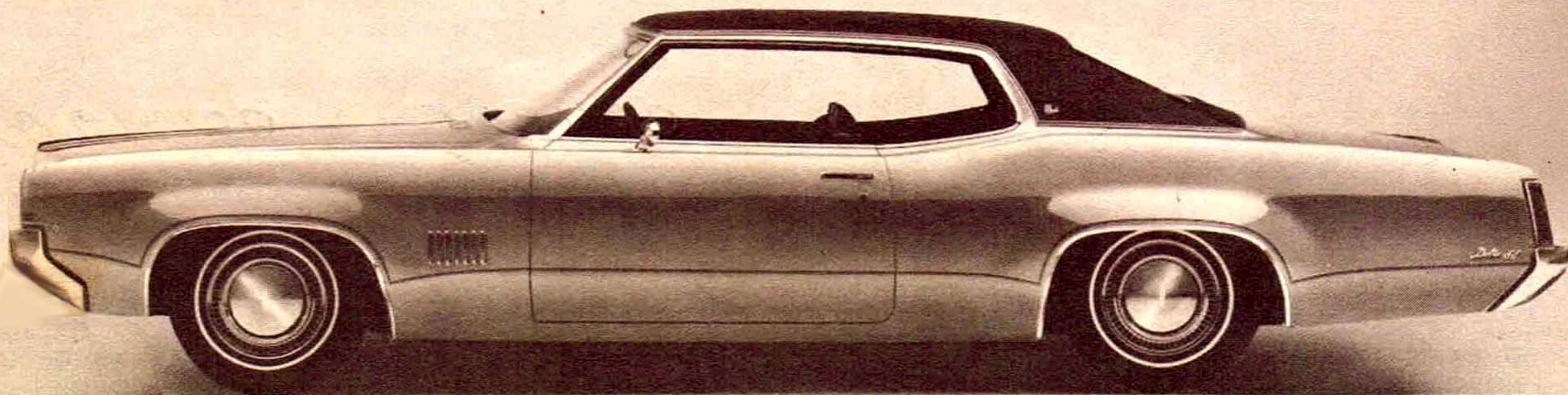


# 1969 Oldsmobile

Salesmen's Prices/Equipment  
Colors and Trims/Specifications





**MODEL PRICES...** F-85  
Cutlass  
Cutlass S  
Cutlass Supreme  
4-4-2  
Vista-Cruiser



# MODEL PRICES . . . F-85, Cutlass, Cutlass S, Cutlass Supreme, 4-4-2, Vista-Cruiser

MODEL	MODEL CODE	MSRP <sub>a</sub>	DEST. CHG. <sub>b</sub>	TOTAL	LOCAL PRICE	MODEL	MODEL CODE	MSRP <sub>a</sub>	DEST. CHG. <sub>b</sub>	TOTAL	LOCAL PRICE
<b>F-85 6</b> Sports Coupe	3177	\$2544		<del>2592.75</del> 2610.50		<b>CUTLASS S V-8</b> Sports Coupe Holiday Coupe Convertible	3677 3687 3667	\$2775 \$2838 \$3092		<del>2822.75</del> 2841.50 <del>2886.75</del> 2904.50 <del>3040.75</del> 3058.50	
<b>F-85 V-8</b> Sports Coupe	3277	\$2655		<del>2703.75</del> 2721.50							
<b>CUTLASS 6</b> Town Sedan Holiday Sedan Station Wagon	3569 3539 3535	\$2705 \$2836 \$3038		<del>2753.75</del> 2771.50 <del>2824.75</del> 2902.50 <del>3084.50</del> 3107.50		<b>CUTLASS SUPREME</b> Town Sedan Holiday Sedan Holiday Coupe	4269 4239 4287	\$2921 \$3094 \$3019		<del>2969.75</del> 2987.50 <del>3042.75</del> 3160.50 <del>3067.75</del> 3085.50	
<b>CUTLASS V-8</b> Town Sedan Holiday Sedan Station Wagon	3669 3639 3635	\$2816 \$2947 \$3149		<del>2864.75</del> 2882.50 <del>2995.75</del> 3013.50 <del>3060.50</del> 3218.50		<b>4-4-2</b> Sports Coupe Holiday Coupe Convertible	4477 4487 4467	\$3124 \$3187 \$3378		<del>3172.75</del> 3190.50 <del>3235.75</del> 3253.50 <del>3426.75</del> 3444.50	
<b>CUTLASS S 6</b> Sports Coupe Holiday Coupe Convertible	3577 3587 3567	\$2664 \$2728 \$2981		<del>2712.75</del> 2730.50 <del>2776.75</del> 2794.50 <del>3029.75</del> 3047.50		<b>VISTA-CRUISER</b> 2-Seat Model 3-Seat Model	4855 4865	\$3440 \$3583		<del>3491.50</del> 3509.50 <del>3624.50</del> 3652.50	

a. Manufacturer's Suggested Retail Price. Includes reimbursement for Federal Excise Tax and Suggested Dealer New Vehicle Preparation Charge.

b. Destination Charge. \$ 2.20 higher on models equipped with an Air Conditioner (C60).

# F-85

## Models • Equipment • Prices

3177 Sports Coupe (L-6)

3277 Sports Coupe (V-8)

2610.50

2721.50

### STANDARD EQUIPMENT

- Armrests, Front-Door
- Ashtray, Instrument-Panel
- Battery, 44-Amp.-Hr./54-Plate (L-6)
- Battery, 61-Amp.-Hr./66-Plate (V-8)
- Cigar Lighter, Instrument-Panel
- Delcotron, 37-Ampere
- Engine, 155-hp Action-Line 6 Regular-Fuel (L-6)
- Engine, 250-hp Rocket 350 V-8 Regular-Fuel—3-bbl. carburetor (V-8)
- Floor Covering, Color-Keyed Heavy-Duty-Vinyl
- Front Torque-Beam
- Lamp, Dome
- Lamp Switches, Automatic Interior
- Seat, Bench Front
- Seat Lap Belts, 3 Front- and 3 Rear
- Seat Shoulder Belts, 2 Front-
- Tires, 7.75 x 14" 2-Ply Blackwall
- Transmission, Fully Synchronized 3-Speed Column-Shift
- Wheels, 14"
- Wheel Hubcaps
- Windows, Crank-Operated Vent

### FACTORY-INSTALLED OPTIONS

- A01 Windows, Soft-Ray Tinted—Includes A02 ..... \$ 38.97
- A02 Windshield, Soft-Ray Tinted ..... \$ 26.33
- A41 Seat Adjuster, 4-Way Power ..... \$ 73.72
- AS4 Seat Shoulder Belts, Deluxe Rear—W39 required ..... \$ 26.33
- AS5 Seat Shoulder Belts, Rear—N.A. with W39 ..... \$ 23.17
- A82 Seat Head Restraints, Dual Front—(Mandatory Option) ..... \$ 16.85

- A91 Trunk-Lid Latch, Power ..... \$ 14.74
- A93 Door Locks, Power—N.A. with W31 ..... \$ 44.76
- B30 Floor Carpeting, Wall-to-Wall ..... \$ 18.96
- B32 Floor Mats, Auxiliary Front ..... \$ 7.37
- B33 Floor Mats, Auxiliary Rear ..... \$ 7.16
- B50 Seat Cushion, Foam-Padded Front ..... \$ 9.48
- BC1 Instrument-Panel Trim, Wood-Grain-Vinyl ..... \$ 10.53
- B90 Moldings, Chrome Side-Window Frame ..... \$ 21.06
- B93 Moldings, Chrome Door-Edge Guard ..... \$ 5.27
- C08 Rooftop Covering, Vinyl—Includes Chrome Roof Drip Moldings ..... \$100.00
- C50 Window Defogger, Rear ..... \$ 22.12
- C56 Ventilation, Flo-Thru Body—N.A. with C60 ..... \$ 15.80
- C57 Ventilation, Forced-Air Body—C56 required. N.A. with C60 ..... \$ 3.69
- C60 Air Conditioner, Four-Season—N.A. with M21; V01 and G88 or G89, or V02 and G92; and W31 ..... \$375.99
- D15 Interior Decor, Deluxe—Includes deluxe front and rear armrests with bright moldings ..... \$ 20.80
- D33 Mirror, Remote-Control Outside Rearview ..... \$ 10.53
- D99 Finish, Two-Tone Magic-Mirror ..... \$ 31.07
- FG2 Shock Absorbers, Firm-Ride Front and Rear—N.A. with G66 ..... \$ 5.27
- G51 Springs, Heavy-Duty Rear—160 lb./in. For trailer towing ..... \$ 3.69
- G66 Shock Absorbers, Superlift Rear—N.A. with FG2 ..... \$ 42.13
- G80 Axle, Anti-Spin Rear—Required with G88, G89, or G92; and W31 ..... \$ 42.13
- J50 Brakes, Pedal-Ease Power—N.A. with JL2 or W31 ..... \$ 41.50
- JL2 Brakes, Power with Front Disc—N.A. with J50 or W31 ..... \$ 64.25
- K30 Cruise Control, Automatic—J50 or JL2 and M31 or M38 required. V-8 model ..... \$ 57.93
- L74 Engine, 310-hp Rocket 350 V-8 H.C. (4-bbl. carburetor)—V-8 model ..... \$ 47.39

- M14 Transmission, Fully Synchronized 3-Speed Floor-Shift Heavy-Duty—Includes Hurst Competition Shifter. V-8 model ..... \$ 84.26
- M20 Transmission, Fully Synchronized, 4-Speed Floor-Shift Wide-Ratio—Includes Hurst Competition Shifter. V-8 model ..... \$184.80
- M21 Transmission, Fully Synchronized 4-Speed Floor-Shift Close-Ratio—Includes Hurst Competition Shifter. G80; V01 and G88 or G89, or V02 and G92, required. N.A. with C60 or Y72. V-8 model ..... \$184.80
- M31 Transmission, Jet-Away: L-6 model ..... \$174.24 V-8 model N.A. with L74 ..... \$184.80
- M38 Transmission, Turbo Hydra-Matic 350—L74 required except with W31. V-8 model ..... \$205.92
- M55 Oil Cooler, Automatic Transmission Auxiliary—For trailer towing. M31 or M38 required. V-8 model ..... \$ 15.80
- N10 Exhaust System, Dual—L74 required. V-8 model ..... \$ 30.23
- N30 Steering Wheel, Deluxe ..... \$ 15.80
- N33 Steering Wheel, Tilt-Away—Includes standard steering wheel; N30 or N42 must be ordered if desired. M14, M20, M21, M31, or M38 required ..... \$ 45.29
- N40 Steering, Roto-Matic Power ..... \$100.05
- N42 Steering Wheel with Instant-Horn, Deluxe ..... \$ 31.60
- N65 Wheels, Super Stock I ..... \$ 73.72
- N81 Tire Pkg., Special—Includes F70 x 14" Wide-Oval Red-Stripe Tires and 14 x 6" J wheels. Can be ordered with N66 or P05. W31 required. V-8 model ..... \$ 63.19
- N95 Wheels, Simulated-Wire ..... \$ 73.72
- P01 Wheel Discs ..... \$ 21.06
- P02 Wheel Discs, Deluxe ..... \$ 47.39
- P05 Wheels, Super Stock I—N.A. with JL2 ..... \$ 90.58
- P26 Tires, 7.75 x 14" 2-Ply Whitewall ..... \$ 31.60
- P80 Tires, F78 x 14" Fiberglass-Belted Whitewall ..... \$ 80.05
- P81 Tires, F70 x 14" Fiberglass-Belted Red-Stripe—W31 required. V-8 model ..... \$89.52
- PL5 Tires, F70 x 14" Blackwall Wide-Oval Polyester-Cord—With raised white letters. W31 required. V-8 model ..... \$ 89.52

NOTE: G88, G89, and G92 are heavy-duty performance rear axles.

- PQ9 Tires, 7.75 x 14" 4-Ply Custom Whitewall Polyester-Cord ..... \$ 49.50
- T60 Battery, Special 70-Ampere-Hour—V-8 model ..... \$ 7.37
- U15 Safety Sentinel ..... \$ 11.59
- U21 Rocket Rally Pac—Includes U35. V-8 model ..... \$ 84.26
- U29 Lamps, Instrument-Panel Courtesy and Map ..... \$ 6.32
- U35 Clock, Electric—Included in U21 ..... \$ 16.85
- U57 Stereo Tape Player—Includes rear speaker. U58, U63, or U69 required: With U58 ..... \$116.91 Without U58 ..... \$133.76
- U58 Radio, AM-FM Stereophonic—Includes rear speaker ..... \$238.03
- U63 Radio, Deluxe Pushbutton ..... \$ 69.51
- U69 Radio, AM-FM ..... \$133.76
- U75 Radio Antenna, Power (Rear) ..... \$ 31.60
- U80 Radio Speaker, Bi-Phonic Rear—Included with U57 and U58 ..... \$ 16.85
- U89 Wiring Harness, Trailer Electrical ..... \$ 10.53
- V01 Radiator, Heavy-Duty—G88 or G89 required. N.A. with C60 or Y72. V-8 model ..... \$ 21.06
- V02 Radiator, Heavy-Duty—G92 required. N.A. with C60 or Y72. V-8 model ..... \$ 15.80
- VE1 Bumper Insert, Rear-Guard Rubber ..... \$ 7.37
- W31 Engine Induction System, Force-Air—Includes Dual-Stripe Hood Paint (W42), G80; M14, M20, M21, M38, N10; and V01 and G88 or G89 or V02 and G92 required. N.A. with C60, J50, JL2, L74, or Y72. V-8 Models ..... \$310.69
- W39 Seat Belts, Deluxe Front and Rear Lap and Front Shoulder ..... \$ 13.69
- Y60 Lamps and Mirrors, Convenience—Includes trunk, underhood, ashtray, and glove compartment lamps, visor vanity mirror, and rearview mirror with map lamp ..... \$ 16.43
- Y72 Engine-Cooling Equipment, Heavy-Duty—Includes heavy-duty radiator and water pump, Thermo-Cool engine fan, and 55-ampere Delcotron. N.A. with V01 and G88 or G89 or with V02 and G92: With C60 ..... \$ 21.06 Without C60 ..... \$ 57.93

### FACTORY-INSTALLED ACCESSORY GROUPS

CODE	ACCESSORY	GROUP 1			GROUP 2		
A91	Trunk-Lid Latch, Power				X	X	X
B93	Moldings, Chrome Door-Edge Guard	X	X	X	X	X	X
N30	Steering Wheel, Deluxe	X	X	X	X	X	X
U29	Lamps, Instr.-Panel Courtesy and Map				X	X	X
U35	Clock, Electric				X	X	X
U58	Radio, AM-FM Stereophonic	X			X		
U63	Radio, Deluxe Pushbutton		X			X	
U69	Radio, AM-FM			X			X
Y60	Lamps and Mirrors, Convenience	X	X	X	X	X	X
Price*		\$275.53	\$167.01	\$171.26	\$313.44	\$144.92	\$205.17

\*Group price is the sum of the prices of all accessories within the group. Desired option of radio must be specified.

# CUTLASS

Sedans and Station Wagons

## Models • Equipment • Prices

3569 Town Sedan (L-6)	3669 Town Sedan (V-8)
3539 Holiday Sedan (L-6)	3639 Holiday Sedan (V-8)
3535 Station Wagon (L-6)	3635 Station Wagon (V-8)

### STANDARD EQUIPMENT

- Armrests, Deluxe Front and Rear (with bright accent moldings)
- Ashtrays, Instrument-Panel and Rear-Armrest
- Battery, 44-Amp.-Hr./54-Plate (L-6)
- Battery, 61-Amp.-Hr./66-Plate (V-8)
- Cigar Lighter, Instrument-Panel
- Delcotron, 37-Ampere
- Engine, 155-hp Action-Line 6 Regular-Fuel (L-6)
- Engine, 250-hp Rocket 350 V-8 Regular-Fuel—2-bbl. carburetor (V-8)
- Floor Carpeting, Wall-to-Wall (plus carpeted door lower panels)
- Frame, Torque-Beam
- Lamp, Dome
- Lamp Switches, Automatic Front-Door Interior-

AS4 Seat Shoulder Belts, Deluxe Rear—W39 required	\$ 26.33
AS5 Seat Shoulder Belts, Rear—N.A. with W39	\$ 23.17
A82 Seat Head Restraints, Dual Front—(Mandatory Option)	\$ 16.85
A91 Trunk-Lid Latch, Power—Sedans	\$ 14.74
A93 Door Locks, Power—For all doors	\$ 68.46
B32 Floor Mats, Auxiliary Front	\$ 7.37
B33 Floor Mats, Auxiliary Rear	\$ 7.16
B39 Floor Carpeting, Deep-Pile Cargo-Area—Station Wagons	\$ 15.80
B50 Seat Cushion, Foam-Padded Front	\$ 9.48
BC1 Instrument-Panel Trim, Wood-Grain-Vinyl	\$ 10.53
B80 Moldings, Chrome Roof Drip—Included in C08 for Town Sedans, Town Sedans and Station Wagons	\$ 13.69

- Moldings, Chrome Lower Body-Side and Wheel-Opening Accent
- Moldings, Chrome Roof Drip (Holiday Sedans)
- Moldings, Chrome Side-Window Frame (Town Sedans and Station Wagons)
- Seat, Bench Front
- Seat Lap Belts, 3 Front- and 3 Rear-
- Seat Moldings, Bright Front- (Holiday Sedans)
- Seat Shoulder Belts, 2 Front-
- Steering Wheel, Deluxe
- Tires, 7.75 x 14" 2-Ply Blackwall (Sedans)
- Tires, 8.25x14" 2-Ply Blackwall (Station Wagons)
- Transmission, Fully Synchronized 3-Speed Column-Shift
- Wheels, 14"
- Wheel Hubcaps
- Windows, Crank-Operated Vent
- Windshield Wipers, Recessed-Park

### FACTORY-INSTALLED OPTIONS

A01 Windows, Soft-Ray Tinted—Includes A02	\$ 38.97
A02 Windshield, Soft-Ray Tinted	\$ 26.33
A31 Windows, Power Side	\$105.32
A33 Window, Power Tailgate—Station Wagons	\$ 34.76
A41 Seat Adjuster, 4-Way Power	\$ 73.72

B85 Moldings, Chrome Side-Window Sill	\$ 19.49
B93 Moldings, Chrome Door-Edge Guard	\$ 8.96
C08 Rooftop Covering, Vinyl—Includes B80 on Town Sedan, Sedans	\$100.05
C28 Tailgate, Drop-or-Swing—Station Wagons	\$ 42.13
C50 Window Defogger, Rear—Sedans	\$ 22.12
C51 Window Air Deflector, Tailgate—Station Wagons	\$ 20.84
C56 Ventilation, Flo-Thru Body—N.A. with C60	\$ 15.80
C57 Ventilation, Forced-Air Body—C56 required. N.A. with C60	\$
C60 Air Conditioner, Four-Season—N.A. with M21; V01 and G88 or V02 and G92	\$375.99
D33 Mirror, Remote-Control Outside Rearview	\$ 10.53
D99 Finish, Two-Tone Magic-Mirror: Sedans	\$ 31.07
Station Wagons	\$ 21.38
FG2 Shock Absorbers, Firm-Ride Front and Rear—N.A. with G66	\$ 5.27
G51 Springs, Heavy-Duty Rear—160 lb./in. For trailer towing	\$ 3.69
G66 Shock Absorbers, Superlift Rear—N.A. with FG2	\$ 42.13
G80 Axle, Anti-Spin Rear—Required with G88 or G92	\$ 42.13

JL2 Brakes, Power with Front Disc—N.A. with J50	\$ 64.25
K30 Cruise Control, Automatic—J50 or JL2 and M31 or M38 required. V-8 models	\$ 57.93
L74 Engine, 310-hp Rocket 350 V-8 H.C. (4-bbl. carburetor)—V-8 models	\$ 47.39
M14 Transmission, Fully Synchronized 3-Speed Floor-Shift Heavy-Duty—Includes Hurst Competition Shifter. V-8 Sedans	\$ 84.26
M20 Transmission, Fully Synchronized 4-Speed Floor-Shift Wide-Ratio—Includes Hurst Competition Shifter. V-8 models	\$184.80
M21 Transmission, Fully Synchronized 4-Speed Floor-Shift Close-Ratio—Includes Hurst Competition Shifter. G80; V01 and G88, or V02 and G92 required. N.A. with C60 or Y72. V-8 models	\$184.80
M31 Transmission, Jetaway: L-6 models	\$174.24
V-8 models. N.A. with L74	\$184.80
M38 Transmission, Turbo Hydra-matic 350—V-8 models	\$205.92
M55 Oil Cooler, Automatic Transmission Auxiliary—For trailer towing. M31 or M38 required. V-8 models	\$ 15.80
N10 Exhaust System, Dual—L74 required. V-8 Sedans	\$ 30.23
N33 Steering Wheel, Tilt-Away—M14, M20, M21, M31, or M38 required	\$ 45.29
N34 Steering Wheel, Custom-Sport	\$ 15.80
N40 Steering, Roto-Matic Power	\$100.05

N42 Steering Wheel with Instant-Horn, Deluxe	\$ 15.80
N66 Wheels, Super Stock II—Sedans	\$ 73.72
N95 Wheels, Simulated-Wire	\$ 73.72
P01 Wheel Discs	\$ 21.06
P02 Wheel Discs, Deluxe	\$ 47.39
P05 Wheels, Super Stock I—N.A. with JL2. Sedans	\$ 90.58
P26 Tires, Whitewall: 7.75 x 14" Sedans	\$ 31.60
8.25 x 14" Station Wagons	\$ 39.92
P80 Tires, Fiberglass-Belted Whitewall: F78 x 14" Sedans	\$ 80.05
G78 x 14" Station Wagons	\$ 92.79

NOTE: G88, G89, and G92 are heavy-duty performance rear axles.

### FACTORY-INSTALLED ACCESSORY GROUPS

CODE	ACCESSORY	GROUP 1			GROUP 2		
A91	Trunk-Lid Latch, Power				X	X	X
B93	Moldings, Chrome Door-Edge Guard	X	X	X	X	X	X
U29	Lamps, Instr.-Panel Courtesy and Map				X	X	X
U35	Clock, Electric				X	X	X
U58	Radio, AM-FM Stereophonic	X			X		
U63	Radio, Deluxe Pushbutton		X		X		
U69	Radio, AM-FM			X			X
Y60	Lamps and Mirrors, Convenience	X	X	X	X	X	X
Price*							
		Sedans	\$263.42	\$ 94.90	\$159.15	\$307.65	\$139.13
		Station Wagons	\$261.73	\$ 93.21	\$157.46	\$291.22	\$122.70
							\$186.95

\*Group price is the sum of the prices of all accessories within the group. Desired option of radio must be specified.

PQ9 Tires, 4-Ply Custom Whitehall Polyester-Cord:	
7.75 x 14" Sedans	\$ 49.50
8.25 x 14" Station Wagons	\$ 59.50
T60 Battery, Special 70-Ampere-Hour—V-8 models	\$ 7.37
U15 Safety Sentinel	\$ 11.59
U21 Rocket Rally Pac—Includes U35. V-8 models	\$ 84.26
U29 Lamps, Instrument-Panel Courtesy and Map—Includes rear-door automatic switches	\$ 12.64
U35 Clock, Electric—Included in U21	\$ 16.85
U57 Stereo Tape Player—Includes rear speaker. U58, U63, or U69 required:	
With U58	\$116.91
Without U58	\$133.76
U58 Radio, AM-FM Stereophonic—Includes rear speaker	\$238.03
U63 Radio, Deluxe Pushbutton	\$ 69.51
U69 Radio, AM-FM	\$133.76
U75 Radio Antenna, Power (Rear)—Sedans	\$ 31.60
U80 Radio Speaker, Bi-Phonic Rear—Included with U57 and U58	\$ 16.85
U89 Wiring Harness, Trailer Electrical	\$ 10.53
V01 Radiator, Heavy-Duty—G88 required. N.A. with C60 or Y72. V-8 models	\$ 21.06
V02 Radiator, Heavy-Duty—G92 required. N.A. with C60 or Y72. V-8 models	\$ 15.80
VE1 Bumper Insert, Rear-Guard Rubber—Sedans	\$ 7.37
V55 Luggage Carrier, Chrome Rooftop—Station Wagons	\$ 63.19
V56 Lock and Trim, Luggage Locker—Station Wagons	\$ 12.64
W39 Seat Belts, Deluxe Front and Rear Lap and Front Shoulder	\$ 13.69
Y60 Lamps and Mirrors, Convenience—Includes underhood, ashtray, and glove compartment lamps, visor vanity mirror, rearview mirror with map lamp, plus trunk lamp in Sedans: Station Wagons	\$ 14.74
	\$ 16.43
Y72 Engine-Cooling Equipment, Heavy-Duty—Includes heavy-duty radiator and water pump, Thermo-Cool engine fan, and 55-ampere Delcotron. N.A. with V01 and G88, or with V02 and G92:	
With C60	\$ 21.06
Without C60	\$ 57.93



# CUTLASS S

## Models • Equipment • Prices

730.50	3577 Sports Coupe (L-6)	3677 Sports Coupe (V-8)	2841.50
794.50	3587 Holiday Coupe (L-6)	3687 Holiday Coupe (V-8)	2904.50
3047.50	3567 Convertible (L-6)	3667 Convertible (V-8)	3158.50

### STANDARD EQUIPMENT

- Armrests, Deluxe Front and Rear (with bright accent moldings—Coupes)
- Armrests, Deluxe Front (with bright accent moldings and backplates—Convertibles)
- Ashtrays, Instrument-Panel and Rear-Armrest
- Battery, 44-Amp.-Hr./54-Plate (L-6)
- Battery, 61-Amp.-Hr./66-Plate (V-8)
- Cigar Lighter, Instrument-Panel
- Delcoltron, 37-Ampere
- Engine, 155-hp Action-Line 6 Regular-Fuel (L-6)
- Engine, 250-hp Rocket 350 V-8 Regular-Fuel—2-bbl. carburetor (V-8)
- Floor Carpeting, Wall-to-Wall
- Frame, Torque-Beam
- Lamp, Dome (Coupes)
- Lamps, Instrument-Panel Ashtray, Courtesy and Map (Convertibles)
- Lamps, Rear-Armrest Courtesy (Convertibles)

A39	Seat Lap Belts, Deluxe Front- and Rear—Convertibles:	
	Except with A52 (2 belts).....	\$ 8.96
	With A52 (3 belts).....	\$ 10.53
A41	Seat Adjuster, 4-Way Power—For bench seat. A52 required in Convertibles.....	\$ 73.72
A46	Seat Adjuster, 4-Way Power—For left-hand bucket seat. A51 required in Coupes. N.A. with A52 in Convertibles.....	\$ 73.72
A51	Seats, Strato Bucket—Coupes.....	\$ 68.46
A52	Seat, Bench Front—N.A. with D55. Convertibles..... Deduct \$ (68.46)	
A82	Seat Head Restraints, Dual Front—(Mandatory Option).....	\$ 16.85
A85	Seat Shoulder Belts, Deluxe Front—A39 required. Convertibles.....	\$ 26.33
A51	Seat Shoulder Belts, Front—N.A. with A39 or A54. Convertibles.....	\$ 23.17
A54	Seat Shoulder Belts, Deluxe Rear—A39 or W39 required.....	\$ 26.33
A55	Seat Shoulder Belts, Rear—N.A. with A39, A85, or W39.....	\$ 23.17

- Lamp Switches, Automatic Interior
- Louver Grilles, Chrome Hood
- Moldings, Chrome Fender-Peak (Convertibles)
- Moldings, Chrome Front-Fender-Peak and Side-Window Halo (Coupes)
- Moldings, Chrome Roof Drip (Coupes)
- Seat, Bench Front (Coupes)
- Seats, Strato Bucket (Convertibles)
- Seat Cushions, Foam-Padded Front- and Rear-
- Seat Lap Belts, 2 Front- and 3 Rear- with Strato Bucket Seats, 3 Front- and 3 Rear- with Bench Front Seat
- Seat Moldings, Bright Front-
- Seat Shoulder Belts, 2 Front- (Coupes)
- Steering Wheel, Deluxe
- Tires, 7.75 x 14" 2-Ply Blackwall
- Top, Power (Convertibles)
- Transmission, Fully Synchronized 3-Speed Column-Shift
- Ventilation, Flo-Thru Body (Holiday Coupes and Convertibles)
- Wheels, 14"
- Wheel Hubcaps
- Windows, Crank-Operated Vent (Sports Coupes)
- Windshield Wipers, Recessed-Park

### FACTORY-INSTALLED OPTIONS

A01	Windows, Soft-Ray Tinted—Includes A02	\$ 38.97
A02	Windshield, Soft-Ray Tinted.....	\$ 26.33
A31	Windows, Power Side.....	\$105.32

A91	Trunk-Lid Latch, Power.....	\$ 14.74
A43	Door Locks, Power—N.A. with W31.....	\$ 44.76
B32	Floor Mats, Auxiliary Front.....	\$ 7.37
B33	Floor Mats, Auxiliary Rear.....	\$ 7.16
BC1	Instrument-Panel Trim, Wood-Grain-Vinyl.....	\$ 10.53
B90	Moldings, Chrome Side-Window Frame—Sports Coupes.....	\$ 21.06
B93	Moldings, Chrome Door-Edge Guard.....	\$ 5.27
B86	Moldings, Chrome Wheel-Opening.....	\$ 15.80
C08	Rooftop Covering, Vinyl—Coupes.....	\$100.05
C50	Window Defogger, Rear—Coupes.....	\$ 22.12
C66	Ventilation, Flo-Thru Body—N.A. with C60. Sports Coupes.....	\$ 15.80
C67	Ventilation, Forced-Air Body—C56 required in Sports Coupes. N.A. with C60.....	\$375.99
C60	Air Conditioner, Four-Season—N.A. with M21; V01 and G88 or G89, or V02 and G92; and W31.....	\$375.99
D15	Decor, Interior—Includes bright door and rear-quarter armrest backplates. Coupes.....	\$ 12.64
D33	Mirror, Remote-Control Outside Rearview.....	\$ 10.53
D55	Console, Sports—With manual transmission, includes lockable map case and instrument-panel courtesy and map lamps in V-8 Coupes; with automatic transmission, includes floor-shift control, lockable map case with lamp, and front and rear console courtesy lamps. A51 and M14, M20, M21, M31 or M38 required. N.A. with A52. \$ 61.09	
D99	Finish, Two-Tone Magic-Mirror—Coupes.....	\$ 31.07

FG2	Shock Absorbers, Firm-Ride Front and Rear N.A. with G66.....	\$ 5.27
G51	Springs, Heavy-Duty Rear—160 lb./in. For trailer towing.....	\$ 3.69
G66	Shock Absorbers, Superlift Rear—N.A. with FG2.....	\$ 42.13
G80	Axle, Anti-Spin Rear—Required with G88, G89; or G92; and W31.....	\$ 42.13
J50	Brakes, Pedal-Ease Power—N.A. with JL2 or W31.....	\$ 41.60
JL2	Brakes, Power with Front Disc—N.A. with J50 or W31.....	\$ 64.25
K30	Cruise Control, Automatic—J50 or JL2 and M31 or M38 required. V-8 models.....	\$ 57.93
L74	Engine, 310-hp Rocket 350 V-8 H.C. (4-bbl. carburetor)—V-8 models.....	\$ 47.39
M14	Transmission, Fully Synchronized 3-Speed Floor-Shift Heavy-Duty—Includes Hurst Competition Shifter. V-8 models.....	\$ 84.26
M20	Transmission, Fully Synchronized 4-Speed Floor-Shift Wide-Ratio—Includes Hurst Competition Shifter. V-8 models.....	\$184.80
M21	Transmission, Fully Synchronized 4-Speed Floor-Shift Close-Ratio—Includes Hurst Competition Shifter. G80; V01 and G88 or G89, or V02 and G92 required. N.A. with C60 or Y72. V-8 models.....	\$184.80
M31	Transmission, Jetaway: L-6 models..... V-8 models. N.A. with L74.....	\$174.24 \$184.80
M38	Transmission, Turbo Hydra-matic 350—V-8 models.....	\$205.92
M55	Oil Cooler, Automatic Transmission Auxiliary—For trailer towing. M31 or M38 required. V-8 models.....	\$ 15.80
N10	Exhaust System, Dual—V-8 models.....	\$ 30.23
N33	Steering Wheel, Tilt-Away—M14, M20, M21, M31, or M38 required.....	\$ 45.29
N34	Steering Wheel, Custom-Sport.....	\$ 15.80
N40	Steering, Roto-Matic Power.....	\$100.05
N42	Steering Wheel with Instant-Horn, Deluxe.....	\$ 15.80
N66	Wheels, Super Stock II.....	\$ 73.72
N81	Tire Pkg., Special—Includes F70 x 14" Wide-Oval Red-Stripe Tires and 14" x 6J11 Wheels. Can be ordered with N66 or P05.....	\$ 63.19
N95	Wheels, Simulated-Wire.....	\$ 73.72
P01	Wheel Discs.....	\$ 21.06
P02	Wheel Discs, Deluxe.....	\$ 47.39
P05	Wheels, Super Stock I—N.A. with JL2.....	\$ 90.58
P26	Tires, 7.75 x 14" 2-Ply Whitewall.....	\$ 31.60

NOTE: G88, G89, and G92 are heavy-duty performance rear axles.

### FACTORY-INSTALLED ACCESSORY GROUPS

CODE	ACCESSORY	GROUP 1			GROUP 2		
A91	Trunk-Lid Latch, Power				X	X	X
B93	Moldings, Chrome Door-Edge Guard	X	X	X	X	X	X
U29	Lamps, Instr.-Panel Courtesy and Map				X**	X**	X**
U35	Clock, Electric				X	X	X
U58	Radio, AM-FM Stereophonic	X			X		
U63	Radio, Deluxe Pushbutton		X			X	
U69	Radio, AM-FM			X			X
Y60	Lamps and Mirrors, Convenience	X	X	X	X	X	X
	Price*	\$259.73	\$ 91.21	\$155.46	\$297.64	\$129.12	\$193.37
	Convertibles	\$257.62	\$ 89.10	\$153.35	\$289.21	\$120.69	\$184.94

\*Group price is the sum of the prices of all accessories within the group. Desired option of radio must be specified.  
\*\*Std. in Convertibles.

W39	Seat Belts, Deluxe Front and Rear Lap and Front Shoulder—Coupes: With A51..... Without A51.....	\$ 12.11 \$ 13.89
Y60	Lamps and Mirrors, Convenience—Includes trunk, underhood, ashtray, and glove compartment lamps, visor vanity mirror, and rearview mirror with map lamp: Coupes..... Convertibles (ashtray lamp std.).....	\$ 16.43 \$ 14.32
Y72	Engine-Cooling Equipment, Heavy-Duty—Includes heavy-duty radiator and water pump, Thermo-Cool engine fan, and 55-ampere Delcotron. N.A. with V01 and G88 or G89, or with V02 and G92: With C60..... Without C60.....	\$ 21.06 \$ 67.93
Y73	Paint, G.T. Stripe Hood—N.A. with W31.....	\$ 10.53

# CUTLASS SUPREME

## Models • Equipment • Prices

4287 Holiday Coupe      4269 Town Sedan      4239 Holiday Sedan

3085.50

2987.50

3160.50

### STANDARD EQUIPMENT

- Armrest, Front-Seat Center (Holiday Sedan, and Coupe with A65)
- Armrests, Deluxe Front and Rear (with bright accent moldings and door armrest backplates)
- Armrests, Deluxe Integral Rear-Quarter (Coupe)
- Ashtrays, Instrument-Panel and Rear-Armrest
- Battery, 61-Ampere-Hour/66-Plate
- Cigar Lighter, Instrument-Panel
- Delcotron, 37-Ampere
- Engine, 310-hp Rocket 350 V-8 H.C. (4-bbl. carburetor)
- Floor Carpeting, Wall-to-Wall (plus carpeted cowl and door panels in Coupe and carpeted cowl, door and front-seat-backlower panels in Sedans.)
- Frame, Torque-Beam
- Instrument-Panel Trim, Wood-Grain-Vinyl
- Lamp, Dome (Town Sedan)

- Lamp, Instrument-Panel Ashtray
- Lamps, Roof Rear-Quarter (Holiday models)
- Lamp Switches, Automatic Front-Door Interior-
- Moldings, Chrome Lower Body-Side and Wheel-Opening Accent
- Moldings, Chrome Roof Drip
- Moldings, Chrome Side-Window Frame (Town Sedan)
- Seat, Bench Front (Town Sedan)
- Seat, Custom Sport Front (Holiday Sedan)
- Seats, Strato Bucket (Coupe)
- Seat Cushions, Foam-Padded Front- and Rear-
- Seat Lap Belts, 2 Front- and 3 Rear-(Coupe)
- Seat Lap Belts, 3 Front- and 3 Rear-(Sedans)
- Seat Moldings, Bright Front-
- Seat Shoulder Belts, 2 Front-
- Steering Wheel, Deluxe
- Tires, 7.75 x 14" 2-Ply Blackwall
- Transmission, Fully Synchronized 3-Speed Column-Shift
- Ventilation, Flo-Thru Body (Coupe)
- Wheels, 14"
- Wheel Hubcaps
- Windows, Crank-Operated Vent (Sedans)
- Windshield Wipers, Recessed-Park

### FACTORY-INSTALLED OPTIONS

- A01 Windows, Soft-Ray Tinted—Includes A02 \$ 38.97
- A02 Windshield, Soft-Ray Tinted..... \$ 26.33
- A31 Windows, Power Side..... \$105.32
- A41 Seat Adjuster, 4-Way Power—For bench seat. A65 required in Coupe..... \$ 73.72
- A46 Seat Adjuster, 4-Way Power—For left-hand bucket seat. Coupe..... \$ 73.72
- A65 Seat, Custom Sport Front—N.A. with D55. Coupe..... No Chg.
- AS4 Seat Shoulder Belts, Deluxe Rear—W39 required..... \$ 26.33
- AS5 Seat Shoulder Belts, Rear—N.A. with W39..... \$23.17
- A82 Seat Head Restraints, Dual Front—(Mandatory Option)..... \$ 16.85
- A91 Trunk-Lid Latch. Power..... \$ 14.74
- A93 Door Locks, Power—For all doors: Coupe..... \$ 44.76 Sedans..... \$ 68.46
- B32 Floor Mats, Auxiliary Front..... \$ 7.37
- B33 Floor Mats, Auxiliary Rear..... \$ 7.16
- B85 Moldings, Chrome Side-Window Sill..... \$ 19.49
- B93 Moldings, Chrome Door-Edge Guard: Coupe..... \$ 5.27 Sedans..... \$ 8.96
- C08 Rooftop Covering, Vinyl..... \$100.05
- C50 Window Defogger, Rear..... \$ 22.12
- C56 Ventilation, Flo-Thru Body—N.A. with C60. Sedans..... \$ 15.80
- C57 Ventilation, Forced-Air Body—C56 required in Sedans. N.A. with C60..... \$
- C60 Air Conditioner, Four-Season — N.A. with M21: V01 and G88, or V02 and G92. \$375.99
- D33 Mirror, Remote-Control Outside Rearview..... \$ 10.63
- D55 Console, Sports—With manual transmission, includes lockable map case and instrument-panel courtesy and map lamps; with automatic transmission, includes floor-shift control, lockable map case with lamp, and front and rear console courtesy lamps. Strato Bucket Seats and M14, M20, M21, or M38 required. Coupe..... \$ 61.09
- D99 Finish, Two-Tone Magic-Mirror..... \$ 31.07
- FG2 Shock Absorbers, Firm-Ride Front and Rear —N.A. with G66..... \$ 5.27

- G51 Springs, Heavy-Duty Rear—160 lb./in. For trailer towing..... \$ 3.69
- G66 Shock Absorbers, Superlift Rear—N.A. with FG2..... \$ 42.13
- G80 Axle, Anti-Spin Rear—Required with G88, G89, or G92..... \$ 42.13
- J50 Brakes, Pedal-Ease Power—N.A. with JL2..... \$ 41.60
- JL2 Brakes, Power with Front Disc—N.A. with J50..... \$ 64.25
- K30 Cruise Control, Automatic—J50 or JL2 and M38 required..... \$ 57.93
- L65 Engine, 250-hp Rocket 350 V-8 Regular-Fuel (2-bbl. carburetor)..... Deduct \$ 33.70
- M14 Transmission, Fully Synchronized 3-Speed Floor-Shift Heavy-Duty — Includes Hurst Competition Shifter..... \$ 84.26
- M20 Transmission, Fully Synchronized 4-Speed Floor-Shift Wide-Ratio—Includes Hurst Competition Shifter..... \$184.80
- M21 Transmission, Fully Synchronized 4-Speed Floor-Shift Close-Ratio—Includes Hurst Competition Shifter. G80; V01 and G88 or V02 and G92 required. N.A. with C60 or Y72..... \$184.80
- M38 Transmission, Turbo Hydra-matic 350 Floor-Shift..... \$205.92
- M55 Oil Cooler, Automatic Transmission Auxiliary—For trailer towing. M38 required..... \$ 15.80
- N10 Exhaust System, Dual — N.A. with L65..... \$ 30.23
- N33 Steering Wheel, Tilt-Away—M14, M20, M21, or M38 required..... \$ 45.29

- N34 Steering Wheel, Custom-Sport..... \$ 15.80
- N40 Steering, Roto-Matic Power..... \$100.05
- N42 Steering Wheel with Instant-Horn, Deluxe..... \$ 15.80
- N66 Wheels, Super Stock II..... \$ 73.72
- N95 Wheels, Simulated-Wire..... \$ 73.72
- P01 Wheel Discs..... \$ 21.06
- P02 Wheel Discs, Deluxe..... \$ 47.39
- P05 Wheels, Super Stock I—N.A. with JL2..... \$ 90.58
- P26 Tires, 7.75 x 14" 2-Ply Whitewall..... \$ 31.60

NOTE: G88, G89, and G92 are heavy-duty performance rear axles.

- P80 Tires, F78 x 14" Fiberglass-Belted Whitewall..... \$ 80.05
- PQ9 Tires, 7.75 x 14" 4-Ply Custom Whitewall Polyester-Cord..... \$ 49.50
- T60 Battery, Special 70-Ampere-Hour..... \$ 7.37
- U15 Safety Sentinel..... \$ 11.59
- U21 Rocket Rally Pac—Includes U35..... \$ 84.26
- U29 Lamps, Instrument-Panel Courtesy and Map —Includes rear-door automatic switches in Sedans. Included in D55 with manual transmission in Coupe: Coupe..... \$ 6.32 Sedans..... \$ 12.64
- U35 Clock, Electric—Included in U21..... \$ 16.85
- U57 Stereo Tape Player—Includes rear speaker. U58, U63, or U69 required: With U58..... \$116.91 Without U58..... \$133.76
- U58 Radio, AM-FM Stereophonic—Includes rear speaker..... \$238.03
- U63 Radio, Deluxe Pushbutton..... \$ 69.51
- U69 Radio, AM-FM..... \$133.76
- U75 Radio Antenna, Power (Rear)..... \$ 31.60
- U80 Radio Speaker, Bi-Phonic Rear—Included with U57 and U58..... \$ 16.85
- U89 Wiring Harness, Trailer Electrical..... \$ 10.53
- V01 Radiator, Heavy-Duty—G88 or G89 required. N.A. with C60 or Y72..... \$ 21.06
- V02 Radiator, Heavy-Duty—G92 required. N.A. with C60 or Y72..... \$ 15.80
- VE1 Bumper Insert, Rear-Guard Rubber..... \$ 7.37

- W39 Seat Belts, Deluxe Front and Rear Lap and Front Shoulder: Coupe with bucket seats..... \$ 12.11 All models with bench seat..... \$ 13.69
- Y60 Lamps and Mirrors, Convenience—Includes trunk, underhood, and glove compartment lamps, visor vanity mirror, and rearview mirror with map lamp..... \$ 14.32
- Y72 Engine-Cooling Equipment, Heavy-Duty—Includes heavy-duty radiator and water pump, Thermo-Cool engine fan, and 55-ampere Delcotron. N.A. with V01 and G88 or G89 or with V02 and G92: With C60..... \$ 21.06 Without C60..... \$ 57.93

### FACTORY-INSTALLED ACCESSORY GROUPS

CODE	ACCESSORY	GROUP 1			GROUP 2		
A91	Trunk-Lid Latch, Power				X	X	X
B93	Moldings, Chrome Door-Edge Guard	X	X	X	X	X	X
U29	Lamps, Instr.-Panel Courtesy and Map				X	X	X
U35	Clock, Electric				X	X	X
U58	Radio, AM-FM Stereophonic	X			X		
U63	Radio, Deluxe Pushbutton		X		X		
U69	Radio, AM-FM			X			X
Y60	Lamps and Mirrors, Convenience	X	X	X	X	X	X
	Price*	Coupe	\$257.62	\$89.10	\$153.35	\$295.53	\$127.01 \$191.26
		Sedans	\$251.31	\$92.79	\$157.04	\$305.54	\$137.02 \$201.27

\*Group price is the sum of the prices of all accessories within the group. Desired option of radio must be specified.



# 4-4-2

## Models • Equipment • Prices

4477 Sports Coupe

3190.50

4487 Holiday Coupe

3253.50

4467 Convertible

3444.50

### STANDARD EQUIPMENT

- **Armrests**, Deluxe Front and Rear (with bright accent moldings and backplates—Coupes)
- **Armrests**, Deluxe Front (with bright accent moldings and backplates—Convertible)
- **Armrests**, Deluxe Integral Rear-Quarter—Convertible
- **Ashtrays**, Instrument-Panel and Rear-Armrest
- **Battery**, 70-Ampere-Hour/66-Plate
- **Cigar Lighter**, Instrument-Panel
- **Delcotron**, 37-Ampere G.S.I.
- **Drive Shaft**, Heavy-Duty
- **Engine**, 325-hp Rocket 400 V-8 H.C. (4-bbl. carburetor)—with Automatic Transmission
- **Engine**, 350-hp Rocket 400 V-8 H.C. (4-bbl. carburetor)—with Manual Transmission

- **Engine Mountings**, Heavy-Duty Front
- **Exhaust System**, Full Dual
- **Floor Carpeting**, Wall-to-Wall
- **Frame**, Torque-Beam
- **Instrument-Panel Trim**, Wood-Grain-Vinyl
- **Lamp**, Dome (Coupes)
- **Lamp**, Instrument-Panel Ashtray
- **Lamps**, Instrument-Panel Courtesy and Map Lamps, and Rear-Armrest Courtesy (Convertible)
- **Lamp Switches**, Automatic Interior—
- **Louver Grilles**, Chrome Hood
- **Moldings**, Chrome Fender-Peak (Convertible)
- **Moldings**, Chrome Front-Fender-Peak and Side-Window Halo (Coupes)
- **Moldings**, Chrome Roof Drip (coupes)
- **Moldings**, Chrome Side-Window Frame (Sports Coupe)
- **Moldings**, Chrome Wheel-Opening
- **Paint Stripes** Hood G.T.
- **Seats**, Strato Bucket
- **Seat Cushions**, Foam-Padded Front- and Rear—
- **Seat Lap Belts**, 2 Front- and 3 Rear—
- **Seat Moldings**, Bright Front—
- **Seat Shoulder Belts**, 2 Front- (Coupes)

- **Shock Absorbers**, Heavy-Duty Front and Rear
- **Springs**, Heavy-Duty Front and Rear
- **Stabilizer Bars**, Heavy-Duty Front and Rear
- **Steering Wheel**, Deluxe
- **Tires**, F70 x 14" 2-PLY Red-Stripe Wide-Oval
- **Top**, Power (Convertible)
- **Transmission**, Fully Synchronized 3-Speed Floor-Shift Heavy-Duty
- **Transmission Shifter**, Hurst Competition
- **Ventilation**, Flo-Thru Body (Holiday Coupe and Convertible)
- **Wheels**, Heavy-Duty 14" x 6JJ
- **Wheel Hubcaps**
- **Windows**, Crank-Operated Vent (Sports Coupe)
- **Windshield Wipers**, Recessed-Park

### FACTORY-INSTALLED OPTIONS

- A01 **Windows**, Soft-Ray Tinted—Includes A02 ..... \$ 38.97
- A02 **Windshield**, Soft-Ray Tinted ..... \$ 26.33
- A31 **Windows**, Power Side ..... \$105.32
- A39 **Seat Lap Belts**, Deluxe Front- and Rear—Convertible: Except with AS2 (2 belts) ..... \$ 8.96 With AS2 (3 belts) ..... \$ 10.53
- A41 **Seat Adjuster**, 4-Way Power — For bench seat. AS2 required ..... \$ 73.72
- A46 **Seat Adjuster**, 4-Way Power — For left-hand bucket seat. N.A. with AS2 ..... \$ 73.72
- A52 **Seat**, Bench Front—N.A. with D55 ..... Deduct \$ 68.46
- A82 **Seat Head Restraints**, Dual Front—(Mandatory Option) ..... \$ 16.85
- A85 **Seat Shoulder Belts**, Deluxe Front—A39 required. Convertible ..... \$ 26.33
- AS1 **Seat Shoulder Belts**, Front—N.A. with A39 or AS4. Convertible ..... \$ 23.17
- AS4 **Seat Shoulder Belts**, Deluxe Rear—A39 or W39 required ..... \$ 26.33
- AS5 **Seat Shoulder Belts**, Rear—N.A. with A39, AS5, or W39 ..... \$ 23.17
- A91 **Trunk-Lid Latch**, Power ..... \$ 14.74
- A93 **Door Locks**, Power—N.A. with W30 ..... \$ 44.76
- B32 **Floor Mats**, Auxiliary Front ..... \$ 7.37
- B33 **Floor Mats**, Auxiliary Rear ..... \$ 7.16
- B37 **Moldings**, Chrome Door-Edge Guard ..... \$ 5.27
- C08 **Roof Top Covering**, Vinyl—Coupes ..... \$100.05
- C50 **Window Defogger**, Rear—Coupes ..... \$ 22.12
- C56 **Ventilation**, Flo-Thru Body—N.A. with C60. Sports Coupe ..... \$ 15.80

- C57 **Ventilation**, Forced-Air Body—C56 required in Sports Coupe. N.A. with C60 ..... \$
- C60 **Air Conditioner**, Four-Season. N.A. with M21: V01 and G88 or G89, or V02 and G92 ..... \$375.99
- D33 **Mirror**, Remote-Control Outside Rearview ..... \$ 10.53
- D55 **Console, Sports**—With manual transmission includes lockable map case and instrument-panel courtesy and map lamps: with automatic transmission, includes floor-shift control, lockable map case with lamp, and front and rear console courtesy lamps. Strato Bucket Seats required. N.A. with AS2 ..... \$ 61.09
- D99 **Finish**, Two-Tone Magic-Mirror — Coupes ..... \$ 31.07
- G51 **Springs**, High-Rate-and-Load Rear—160 lb./in. For trailer towing. M40 required. \$ 3.69
- G66 **Shock Absorbers**, Superlift Rear—M40 required ..... \$ 42.13
- G80 **Axle**, Anti-Spin Rear—Required with G88, G89, or G92 ..... \$ 42.13
- J50 **Brakes**, Pedal-Ease Power — N.A. with JL2 or W30 ..... \$ 41.60
- JL2 **Brakes**, Power with Front Disc—N.A. with J50 or W30 ..... \$ 64.25
- K30 **Cruise Control**, Automatic—J50 or JL2 and M40 required. N.A. with W30 ..... \$ 57.93
- M20 **Transmission**, Fully Synchronized 4-Speed Floor-Shift Wide-Ratio—Includes Hurst Competition Shifter ..... \$184.80
- M21 **Transmission**, Fully Synchronized 4-Speed Floor-Shift Close-Ratio—Includes Hurst Competition Shifter. G80: V01 and G88 or V02 and G92 required. N.A. with C60 or Y72. \$184.80
- M40 **Transmission**, Turbo Hydra-matic 400— \$227.04

- M55 **Dil Cooler**, Automatic Transmission Auxiliary—For trailer towing. M40 required. \$ 15.80
- N33 **Steering Wheel**, Tilt-Away ..... \$ 45.29
- N34 **Steering Wheel**, Custom-Sport ..... \$ 15.80
- N40 **Steering**, Roto-Matic Power ..... \$100.05
- N42 **Steering Wheel with Instant-Horn**, Deluxe ..... \$ 15.80
- N66 **Wheels**, Super Stock II ..... \$ 73.72
- N95 **Wheels**, Simulated-Wire ..... \$ 73.72
- P01 **Wheel Discs** ..... \$ 21.06
- P02 **Wheel Discs**, Deluxe ..... \$ 47.39
- P05 **Wheels**, Super Stock I—N.A. with JL2 ..... \$ 90.58

NOTE: G88, G89, and G92 are heavy-duty performance rear axles.

- P26 **Tires**, G78 x 14" Whitewall Wide-Tread Rayon-Cord ..... No Chg.
- P81 **Tires**, F70 x 14" Fiberglass-Belted Red-Stripe ..... \$ 26.33
- PL5 **Tires**, F70 x 14" Blackwall Wide-Oval Polyester-Cord—With raised white letters \$ 26.33
- U15 **Safety Sentinel** ..... \$ 11.59
- U21 **Rocket Rally Pac**—Includes U35 ..... \$ 84.26
- U29 **Lamps**, Instrument-Panel Courtesy and Map —Included in D55 with manual transmission. Coupes ..... \$ 6.32
- U35 **Clock**, Electric—Included in U21 ..... \$ 16.85
- U57 **Stereo Tape Player**—Includes rear speaker. U58, U63, or U69 required: With U58 ..... \$116.91 Without U58 ..... \$133.76
- U58 **Radio**, AM-FM Stereophonic—Includes rear speaker ..... \$238.03
- U63 **Radio**, Deluxe Pushbutton ..... \$ 69.51
- U69 **Radio**, AM-FM ..... \$133.76
- U75 **Radio Antenna**, Power (Rear) ..... \$ 31.60
- U80 **Radio Speaker**, Bi-Phonic Rear—Included with U57 and U58 ..... \$ 16.85
- U89 **Wiring Harness**, Trailer Electrical ..... \$ 10.53
- V01 **Radiator**, Heavy-Duty—G88 or G89 required. N.A. with C60 or Y72: With W30 ..... \$ 21.06 Without W30 ..... \$ 36.86
- V02 **Radiator**, Heavy-Duty—G92 required. N.A. with C60 or Y72 ..... \$ 15.80
- VE1 **Bumper Insert**, Rear-Guard Rubber ..... \$ 7.37
- W30 **Engine Induction System**, Force-Air—Includes W42, G80: M21 or M40: V01 and G88 or G89 or V02 and G92 required. N.A. with C60, J50, JL2, or Y72 ..... \$263.30

- W39 **Seat Belts**, Deluxe Front and Rear Lap and Front Shoulder—Coupes: With bucket seats ..... \$ 12.11 With bench seat ..... \$ 13.69
- W42 **Hood**, Dual-Stripe—Included in W30. N.A. with standard Hood G.T. Paint Stripes \$ 18.96
- Y60 **Lamps and Mirrors**, Convenience—Includes trunk, underhood, and glove compartment lamps, visor vanity mirror, and rearview mirror with map lamp ..... \$ 14.32
- Y72 **Engine-Cooling Equipment**, Heavy-Duty—Includes heavy-duty radiator and water pump, Thermo-Cool engine fan, and 55-ampere Delcotron. N.A. with V01 and G88 or G89, or with V02 and G92: With C60 ..... \$ 21.06 Without C60 ..... \$ 57.93

### FACTORY-INSTALLED ACCESSORY GROUPS

CODE	ACCESSORY	GROUP 1			GROUP 2		
A91	Trunk-Lid Latch, Power				X	X	X
B93	Moldings, Chrome Door-Edge Guard	X	X	X	X	X	X
U29	Lamps, Instr.-Panel Courtesy and Map				X**	X**	X**
U35	Clock, Electric				X	X	X
U58	Radio, AM-FM Stereophonic	X			X		
U63	Radio, Deluxe Pushbutton		X			X	
U69	Radio, AM-FM			X			X
Y60	Lamps and Mirrors, Convenience	X	X	X	X	X	X
	Price*	\$267.62	\$85.10	\$153.35	\$295.53	\$127.61	\$191.26
	Coupes						
	Convertible	\$297.62	\$85.10	\$153.35	\$295.21	\$126.69	\$184.94

\*Group price is the sum of the prices of all accessories within the group. Desired option of radio must be specified.

\*\*Standard in Convertible.



# VISTA CRUISER

## Models • Equipment • Prices

4855 2-Seat Model

3509.50

4865 3-Seat Model

3652.50

### STANDARD EQUIPMENT

- **Armrests**, Deluxe Front and Rear (with bright accent moldings and backplates)
- **Ashtrays**, Instrument-Panel and Rear-Armrest
- **Battery**, 61-Ampere-Hour/66-Plate (with standard engine or L74)
- **Body-Side and Tailgate Panels**, Chrome-Framed Wood-Grain-Vinyl
- **Cigar Lighter**, Instrument-Panel
- **Delcotron**, 37-Ampere
- **Engine**, 250-hp Rocket 350 V-8 Regular-Fuel (2-bbl. carburetor)
- **Floor Carpeting**, Wall-to-Wall Passenger-Area (plus carpeted cowl and door lower panels)
- **Frame**, Torque-Beam
- **Instrument-Panel Trim**, Wood-Grain-Vinyl
- **Lamp**, Central Dome
- **Lamp**, Dome Over Tailgate (back switch only)
- **Lamp**, Instrument-Panel Ashtray
- **Lamp Switches**, Automatic Front-Door Interior
- **Moldings**, Chrome Lower Body-Side and Wheel-Opening Accent
- **Moldings**, Chrome Roof Drip
- **Moldings**, Chrome Side-Window Frame
- **Seat**, Bench Front
- **Seat**, Divided Second (3-seat model)
- **Seat Cushions**, Foam-Padded (in all seats)
- **Seat Lap Belts**, 3 Front- and 3 Rear- (plus 2 for third seat in 3-seat model)
- **Seat Moldings**, Bright Front-
- **Seat Shoulder Belts**, 2 Front-
- **Steering Wheel**, Deluxe
- **Tires**, 8.25 x 14" 2-Ply Blackwall (2-seat model)
- **Tires**, 8.55 x 14" 2-Ply Blackwall (2-seat model with C28, and 3-seat model)

- **Transmission**, Fully Synchronized 3-Speed Column-Shift
- **Visors**, Vista-Roof Sun
- **Wheels**, 14"
- **Wheel Hubcaps**
- **Windows**, Crank-Operated Vent
- **Windshield Wipers**, Recessed-Park

### FACTORY-INSTALLED OPTIONS

- AA3 Glass**, Chrome-Coated Tinted Vista-Roof ..... \$ 21.06
- A01 Windows**, Soft-Ray Tinted—Includes A02 ..... \$ 38.97
- A02 Windshield**, Soft-Ray Tinted ..... \$ 26.33
- A31 Windows**, Power Side ..... \$105.32
- A33 Window**, Power Tailgate ..... \$ 34.76
- A41 Seat Adjuster**, 4-Way Power ..... \$ 73.72
- AS4 Seat Shoulder Belts**, Deluxe Rear—W39 required:  
2-seat model—For second seat ..... \$ 26.33  
3-seat model—For second and third seats ..... \$ 52.66
- AS5 Seat Shoulder Belts**, Rear—N.A. with W39:  
2-seat model—For second seat ..... \$ 23.17  
3-seat model—For second and third seats ..... \$ 46.34
- A82 Seat Head Restraints**, Dual Front (Mandatory Option) ..... \$ 16.85
- A93 Door Locks**, Power—For all doors ..... \$ 68.46
- B32 Floor Mats**, Auxiliary Front ..... \$ 7.37
- B33 Floor Mats**, Auxiliary Rear ..... \$ 7.16
- B39 Floor Carpeting**, Deep-Pile Cargo-Area ..... \$ 15.80
- B85 Moldings**, Chrome Side-Window Sill ..... \$ 19.49
- B93 Moldings**, Chrome Door-Edge Guard ..... \$ 8.96
- C28 Tailgate**, Drop-or-Swing ..... \$ 42.13
- C51 Window Air Deflector**, Tailgate- ..... \$ 20.84
- C56 Ventilation**, Flo-Thru Body—N.A. with C60 ..... \$ 15.80
- C57 Ventilation**, Forced-Air Body—C56 required. N.A. with C60 ..... \$
- C60 Air Conditioner**, Four-Season ..... \$375.99

- D33 Mirror**, Remote-Control Outside Rearview ..... \$ 10.53
- D99 Finish**, Two-Tone Magic-Mirror ..... \$ 21.38
- FG2 Shock Absorbers**, Firm-Ride Front and Rear—N.A. with G66 ..... \$ 5.27
- G51 Springs**, Heavy-Duty Rear—175 lb./in. For trailer towing ..... \$ 3.69
- G66 Shock Absorbers**, Superlift Rear—N.A. with FG2 ..... \$ 42.13
- G80 Axle**, Anti-Spin Rear ..... \$ 42.13
- J50 Brakes**, Pedal-Ease Power—N.A. with JL2 ..... \$ 41.80
- JL2 Brakes**, Power with Front Disc—N.A. with J50 ..... \$ 64.25
- K30 Cruise Control**, Automatic—J50 or JL2 and M40 required ..... \$ 57.93
- L31 Engine**, 325-hp Rocket 400 V-8 H.C. (4-bbl. carburetor)—M40 and T60 required ..... \$121.12
- L74 Engine**, 310-hp Rocket 350 V-8 H.C. (4-bbl. carburetor) ..... \$ 47.39
- M20 Transmission**, Fully Synchronized 4-Speed Floor-Shift Wide-Ratio—Includes Hurst Competition Shifter ..... \$184.80
- M40 Transmission**, Turbo Hydra-matic 400 ..... \$227.04
- M55 Oil Cooler**, Automatic Transmission Auxiliary—For trailer towing. M40 required ..... \$ 15.80
- N33 Steering Wheel**, Tilt-Away—M20 or M40 required ..... \$ 45.29
- N34 Steering Wheel**, Custom-Sport ..... \$ 15.80
- N40 Steering**, Roto-Matic Power ..... \$100.05
- N42 Steering Wheel with Instant-Horn**, Deluxe ..... \$ 15.80
- N95 Wheels**, Simulated-Wire ..... \$ 73.72
- P01 Wheel Discs** ..... \$ 21.06
- P02 Wheel Discs**, Deluxe ..... \$ 47.39
- P26 Tires**, Whitewall:  
8.25 x 14", 2-seat model ..... \$ 39.92  
8.55 x 14", 2-seat model with C28, and 3-seat model ..... \$ 43.66

- P80 Tires**, Fiberglass-Belted Whitewall:  
G78 x 14", 2-seat model ..... \$ 92.79  
H78 x 14", 2-seat model with C28, and 3-seat model ..... \$101.90
- PQ9 Tires**, 4-Ply Custom Whitewall Polyester-Cord:  
8.25 x 14", 2-seat model ..... \$ 59.50  
8.55 x 14", 2-seat model with C28, and 3-seat model ..... \$ 64.41
- T60 Battery**, Special 70-Ampere-Hour—Required with L31 ..... \$ 7.37
- U15 Safety Sentinel** ..... \$ 11.59
- U21 Rocket Rally Pac**—Includes U35 ..... \$ 84.26
- U29 Lamps**, Instrument-Panel Courtesy and Map—Includes rear-door automatic switches ..... \$ 12.84
- U35 Clock**, Electric—Included in U21 ..... \$ 16.85
- U57 Stereo Tape Player**—Includes rear speaker. U58, U63, or U69 required:  
With U58 ..... \$116.91  
Without U58 ..... \$133.76
- U58 Radio**, AM-FM Stereophonic—Includes rear speaker ..... \$238.03
- U63 Radio**, Deluxe Pushbutton ..... \$ 69.51
- U69 Radio**, AM-FM ..... \$133.76
- U80 Radio Speaker**, Bi-Phonic Rear—Included with U57 and U58 ..... \$ 16.85
- U89 Wiring Harness**, Trailer Electrical ..... \$ 10.53
- V55 Luggage Carrier**, Chrome Rooftop ..... \$ 63.19
- V56 Lock and Trim**, Luggage Locker ..... \$ 12.64
- W39 Seat Belts**, Deluxe Front and Rear Lap and Front Shoulder—Includes third-seat belts in 3-seat model:  
2-seat model ..... \$ 13.69  
3-seat model ..... \$ 16.85
- Y60 Lamps and Mirrors**, Convenience—Includes underhood and glove compartment lamps, visor vanity mirror, and rearview mirror with map lamp ..... \$ 12.64
- Y72 Engine-Cooling Equipment**, Heavy-Duty—Includes heavy-duty radiator and water pump, Thermo-Cool engine fan, and 55-ampere Delco-tron:  
With C60 ..... \$ 21.06  
Without C60 ..... \$ 97.93

### FACTORY-INSTALLED ACCESSORY GROUPS

CODE	ACCESSORY	GROUP 1			GROUP 2		
B93	Moldings, Chrome Door-Edge Guard	X	X	X	X	X	X
U29	Lamps, Instr.-Panel Courtesy and Map				X	X	X
U35	Clock, Electric				X	X	X
U58	Radio, AM-FM Stereophonic	X			X		
U63	Radio, Deluxe Pushbutton		X			X	
U69	Radio, AM-FM			X			X
Y60	Lamps and Mirrors, Convenience	X	X	X	X	X	X
Price*		\$259.29	\$91.11	\$155.36	\$289.12	\$120.60	\$184.85

\*Group price is the sum of the prices of all accessories within the group. Desired option of radio must be specified.



# DELTA 88

## Models • Equipment • Prices

3286, 50	5469 Town Sedan	5439 Holiday Sedan	3417, 50
3341, 50	5437 Holiday Coupe	5467 Convertible	3654, 50

### STANDARD EQUIPMENT

- Armrests, Front and Rear
- Ashtrays, Instrument-Panel, R.H. Front-Armrest, and Rear-Armrest
- Battery, 61-Amp.-Hr./66-Plate (with standard engine)
- Battery, 73-Amp.-Hr./78-Plate (with L30)
- Battery, 75-Amp.-Hr./90-Plate (with L31 or L32)
- Cigar Lighter, Instrument-Panel
- Delcotron, 42-Ampere
- Engine, 250-hp Rocket 350 V-8 Regular-Fuel (2-bbl. carburetor)
- Floor Carpeting, Wall-to-Wall
- Frame, Torque-Beam
- Frame, Heavy-Duty Torque-Beam (Convertible)
- Instrument-Panel Trim, Wood-Grain-Vinyl
- Lamp, Dome (Sedans and Coupe)
- Lamp, Instrument-Panel Ashtray
- Lamps, Instrument-Panel Courtesy and Map, and Rear-Armrest Courtesy (Convertible)
- Lamp Switches, Automatic Front-Door Interior-

A82	Seat Head Restraints, Dual Front—(Mandatory Option)	\$ 16.85
A91	Trunk-Lid Latch, Power	\$ 14.74
A93	Door Locks, Power—For all doors: Coupe and Convertible	\$ 44.76
	Sedans	\$ 68.46
B01	Suspension, Heavy-Duty—Includes heavy-duty front and rear springs and shock absorbers, heavy-duty front stabilizer bar. N.A. with FG2, G51, G66, or U15. Sedans and Coupe	\$ 8.43
B07	Suspension with Rear Stabilizer Bar, Heavy-Duty—Includes heavy-duty front and rear springs, stabilizer bars, and shock absorbers. N.A. with FG2, G51, G66, or U15. Sedans and Coupe	\$ 17.80
B32	Floor Mats, Auxiliary Front	\$ 7.37
B33	Floor Mats, Auxiliary Rear	\$ 7.16
B36	Floor Mat, Heavy-Duty Rubber Trunk	\$ 7.90
BG1	Floor Covering, Heavy-Duty Black-Vinyl Front and Rear—Town Sedan	\$ 10.53

- Moldings, Chrome Body-Side, Rear-Fender, and Wheel-Opening
- Moldings, Chrome Roof Drip (Holiday Sedan)
- Seat, Bench Front
- Seat Cushion, Foam-Padded Rear—(Coupe and Convertible)
- Seat Lap Belts, 3 Front- and 3 Rear-
- Seat Shoulder Belts, 2 Front—(Sedans and Coupe)
- Seat Moldings, Bright Front—(Convertible)
- Tires, 8.55 x 15" 2-Ply Blackwall
- Top, Power (Convertible)
- Transmission, Fully Synchronized 3-Speed Column-Shift
- Ventilation, Flo-Thru Body
- Wheels, 15"
- Wheel Discs
- Windshield Wipers, Recessed-Park

### FACTORY-INSTALLED OPTIONS

A01	Windows, Soft-Ray Tinted—Includes A02	\$ 44.23
A02	Windshield, Soft-Ray Tinted	\$ 29.49
A31	Windows, Power Side	\$110.59
A39	Seat Lap Belts, Deluxe Front- and Rear-Convertible	\$ 10.53
A42	Seat Adjuster, 6-Way Power	\$100.05
A74	Seats, Heavy-Duty Front and Rear—Sedans	\$ 15.27
A85	Seat Shoulder Belts, Deluxe Front—A39 required. Convertible	\$ 26.33
AS1	Seat Shoulder Belts, Front—N.A. with A39 or AS4. Convertible	\$ 23.17
AS4	Seat Shoulder Belts, Deluxe Rear—A39 or W39 required	\$ 26.33
AS5	Seat Shoulder Belts, Rear—N.A. with A39, A85, or W39	\$ 23.17

B50	Seat Cushion, Foam-Padded Front—Included in Y67	\$ 11.64
B80	Moldings, Chrome Roof Drip—Included in C08 on Town Sedan. Town Sedan and Coupe	\$ 13.69
B84	Moldings, Bodyguard Side	\$ 12.64
B85	Moldings, Chrome Side-Window Sill—B80 required on Coupe. Included in C08 on Town Sedan	\$ 19.49
B90	Moldings, Chrome Side-Window Frame—Town Sedan	\$ 21.06
B93	Moldings, Chrome Door-Edge Guard: Coupe and Convertible	\$ 5.27
	Sedans	\$ 8.96
C08	Roof Covering, Vinyl—Includes B80 and B85 on Town Sedan. Sedans and Coupe	\$121.12
C50	Window Defogger, Rear—Sedans and Coupe	\$ 22.12
C57	Ventilation, Forced-Air Body—N.A. with C60 or C61	\$
C60	Air Conditioner, Four-Season—N40 required	\$421.28
C61	Air Conditioner, Comfortron—N40 required	\$500.27
D33	Mirror, Remote-Control Outside Rearview	\$ 10.53
D99	Finish, Two-Tone Magic-Mirror—Sedans and Coupe	\$ 42.13
F35	Frame, Heavy-Duty Torque-Beam—For trailer towing. N.A. with M31. Sedans and Coupe	\$ 18.01
FG2	Shock Absorbers, Firm-Ride Front and Rear—N.A. with B01, B07, or G66	\$ 5.27

G51	Springs, Heavy-Duty Rear—For trailer towing. N.A. with B01 or B07	\$ 3.69
G68	Shock Absorbers, Superlift Rear—N.A. with B01, B07, or FG2	\$ 42.13
G80	Axle, Anti-Spin Rear	\$ 46.60
J50	Brakes, Pedal-Ease Power—M31, M40, or M41 required. N.A. with JL2	\$ 42.13
JL2	Brakes, Power with Front Disc—M31, M40, or M41 and N40 required. N.A. with J50	\$ 78.99
K30	Cruise Control, Automatic—J50 or JL2 and M31, M40, or M41 required	\$ 63.19
L30	Engine, 310-hp Rocket 455 V-8 Regular-Fuel (2-bbl. carburetor). N.A. with M31 or M41	\$ 63.19
L31	Engine, 365-hp Rocket 455 V-8 H.C. (4-bbl. carburetor)—M40 required	\$110.59
L32	Engine, 390-hp High-Performance Rocket 455 V-8 H.C. (4-bbl. carburetor)—Includes dual exhaust system. M41 and Y72 required	\$141.13
M31	Transmission, Jetaway—Std. engine required. N.A. with F35 or L30. Sedans and Coupe	\$184.80
M40	Transmission, Turbo Hydra-matic 400—N.A. with L32	\$227.04
M41	Transmission, Heavy-Duty Turbo Hydra-matic 400—L32 required	\$242.88
M55	Oil Cooler, Automatic Transmission Auxiliary—For trailer towing. M31, M40, or M41 required	\$ 15.80
N30	Steering Wheel, Deluxe—N.A. with N37	\$ 15.80
N33	Steering Wheel, Tilt-Away—M31, M40, or M41 required	\$ 45.29
N34	Steering Wheel, Custom-Sport—N.A. with N37	\$ 31.60
N37	Steering Wheel, Tilt-and-Telescope—Includes N42, J50 or JL2 and M31, M40, or M41 required	\$ 84.26
N40	Steering, Roto-Matic Power	\$110.59
N42	Steering Wheel with Instant-Horn, Deluxe—Included in N37	\$ 31.60
N99	Wheels, Heavy-Duty 15 x 6.00"—For trailer towing	\$ 10.53
P03	Wheel Discs, Deluxe	\$ 31.80
P26	Tires, 8.55 x 15" 2-Ply Whitewall	\$ 43.66
P80	Tires, H78 x 15" Fiberglass-Belted Whitewall	\$101.90
PQ9	Tires, 8.55 x 15" 4-Ply Custom Whitewall Polyester-Cord	\$ 64.41
T87	Lamps, Cornering—M31, M40, or M41 required	\$ 36.86
U15	Safety Sentinel—N.A. with B01 or B07	\$ 11.59
U29	Lamps, Instrument-Panel Courtesy and Map—Sedans and Coupe	\$ 8.43
U35	Clock, Electric	\$ 16.85
U57	Stereo Tape Player—Includes rear speaker. U58, U59, or U63 required: With U58	\$116.91
	Without U58	\$133.76
U58	Radio, AM-FM Stereophonic—Includes rear speaker	\$238.03
U59	Radio, AM-FM Signal-Seeker Tuning	\$173.78
U61	Radio, Deluxe Pushbutton	\$ 86.89
U73	Radio Antenna, Power (Front)	\$ 31.60
U80	Radio Speaker, Bi-Phonic Rear—Included with U57 and U58	\$ 16.85
U89	Wiring Harness, Trailer Electrical	\$ 10.53
W39	Seat Belts, Deluxe Front and Rear Lap and Front Shoulder—Sedans and Coupe	\$ 13.69
Y60	Lamps and Mirrors, Convenience—Includes trunk, underhood, and glove compartment lamps, visor vanity mirror, and rearview mirror with map lamp	\$ 14.74
Y67	Interior Equipment, Deluxe: Town Sedan—Includes bright door armrest backplates, foam-padded front-seat cushion	\$ 20.01
	Holiday Coupe—Includes bright door armrest backplates, roof rear-quarter lamps, foam-padded front-seat cushion	\$ 22.12
	Holiday Sedan—Includes bright door armrest backplates, roof rear-quarter lamps, automatic rear-door lamp switches, foam-padded front-seat cushion	\$ 30.54
	Convertible—Includes chrome rear-armrest ashtrays and cigar lighters, bright door armrest backplates, foam-padded front-seat cushion	\$ 33.70
Y71	Interior, Custom—N.A. in Convertible: Town Sedan—Includes custom seat upholstery, door trim panels, carpeted door and cowl lower panels, woven-fiber rear window shell covering, bright front-seat side upper and lower panels, and deluxe armrests with bright backplates: With Y67	\$ 89.52
	Without Y67	\$ 97.95
	Holiday Models—Same as for Town Sedan, plus Custom Sport Front Seat, and roof rear-quarter lamps: Either model with Y67	\$115.85
	Holiday Coupe without Y67	\$126.38
	Holiday Sedan without Y67	\$130.59
Y72	Engine-Cooling Equipment, Heavy-Duty—Includes special radiator, heavy-duty water pump, Thermo-Cool engine fan, and 55-ampere Delcotron: With C60 or C61	\$ 21.06
	Without C60 or C61	\$ 57.93

FACTORY-INSTALLED ACCESSORY GROUPS									
CODE	ACCESSORY	GROUP 1			GROUP 2				
A91	Trunk-Lid Latch, Power			X	X	X	X		
B93	Moldings, Chrome Door-Edge Guard	X	X	X	X	X	X		
N30	Steering Wheel, Deluxe	X	X	X	X	X	X		
U29	Lamps, Instr.-Panel Courtesy and Map			X**	X**	X**	X**		
U35	Clock, Electric				X	X	X		
U58	Radio, AM-FM Stereophonic			X					
U59	Radio, AM-FM Signal-Seeker Tuning				X	X			
U63	Radio, Deluxe Pushbutton	X	X	X	X	X	X		
Y60	Lamps and Mirrors, Convenience	X	X	X	X	X	X		
	Price*	\$122.79	\$209.59	\$273.84	\$162.72	\$249.61	\$313.86		
	Coupe								
	Convertible	\$122.70	\$209.59	\$273.84	\$154.29	\$241.18	\$305.43		
	Sedans	\$126.39	\$213.28	\$277.53	\$166.41	\$253.30	\$317.55		

\*Group price is the sum of the prices of all accessories within the group. Desired option of radio must be specified.

\*\*Standard in Convertible.



# DELTA 88 CUSTOM

## Models • Equipment • Prices

6469 Town Sedan

6437 Holiday Coupe

6439 Holiday Sedan

3496.50

3589.50

3664.50

### STANDARD EQUIPMENT

- Armrest, Front-Seat Center (Holiday models)
- Armrests, Deluxe Front and Rear (with bright accent moldings and backplates)
- Ashtrays, Instrument-Panel, R.H. Front-Armrest, and Rear-Armrest
- Battery, 73-Ampere-Hour/78-Plate (with standard engine)
- Battery, 75-Amp.-Hr./90-Plate (with L31 or L32)
- Cigar Lighter, Instrument-Panel
- Delcotron, 42-Ampere
- Engine, 310-hp Rocket 455 V-8 Regular-Fuel (2-bbl. carburetor)
- Floor Carpeting, Wall-to-Wall (plus carpeted cowl and door lower panels)
- Frame, Torque-Beam

- Wheels, 15"
- Wheel Discs
- Window Shelf Covering, Woven-Fiber Rear-
- Windshield Wipers, Recessed-Park

### FACTORY-INSTALLED OPTIONS

- A01 Windows, Soft-Ray Tinted—Includes A02 ..... \$ 44.23
- A02 Windshield, Soft-Ray Tinted ..... \$ 29.49
- A31 Windows, Power Side ..... \$110.59
- A42 Seat Adjuster, 6-Way Power ..... \$100.05
- A54 Seat Shoulder Belts, Deluxe Rear—W39 required ..... \$ 26.33
- A55 Seat Shoulder Belts, Rear—N.A. with W39 ..... \$ 23.17
- A82 Seat Head Restraints, Dual Front—(Mandatory Option) ..... \$ 17.90
- A91 Trunk-Lid Latch, Power ..... \$ 14.74
- A93 Door Locks, Power—For all doors: Coupe ..... \$ 44.76  
Sedans ..... \$ 68.46
- B01 Suspension, Heavy-Duty—Includes heavy-duty front and rear springs and shock absorbers, heavy-duty front stabilizer bar. N.A. with FG2, G51, G66, or U15 ..... \$ 8.43
- B07 Suspension with Rear Stabilizer Bar, Heavy-Duty—Includes heavy-duty front and rear springs, stabilizer bars, and shock absorbers. N.A. with FG2, G51, G66, or U15 ..... \$ 17.80
- B32 Floor Mats, Auxiliary Front ..... \$ 7.37
- B33 Floor Mats, Auxiliary Rear ..... \$ 7.16
- B36 Floor Mat, Heavy-Duty Rubber Trunk ..... \$ 7.90
- BG1 Floor Covering, Heavy-Duty Black-Vinyl Front and Rear—Town Sedan ..... \$ 10.53
- B85 Moldings, Chrome Side-Window Sill—Included in C08 on Town Sedan ..... \$ 19.49
- B93 Moldings, Chrome Door-Edge Guard: Coupe ..... \$ 5.27  
Sedans ..... \$ 8.96
- C08 Rooftop Covering, Vinyl—Includes B85 on Town Sedan ..... \$121.12
- C50 Window Defogger, Rear ..... \$ 22.12

- Instrument-Panel Trim, Wood-Grain-Vinyl
- Lamp, Dome (Town Sedan)
- Lamps, Instrument-Panel Ashtray, Courtesy, and Map
- Lamps, Roof Rear-Quarter (Holiday models)
- Lamp Switches at all Doors, Automatic Interior-
- Moldings, Chrome Lower Body-Side, Fender, and Wheel-Opening
- Moldings, Chrome Roof Drip
- Moldings, Chrome Side-Window Frame (Town Sedan)
- Seat, Bench Front (Town Sedan)
- Seat, Custom Sport Front (Holiday models)
- Seat Cushion, Foam-Padded Front-
- Seat Cushion, Foam-Padded Rear- (Holiday models)
- Seat Lap Belts, 3 Front- and 3 Rear-
- Seat Moldings, Bright Front-
- Seat Shoulder Belts, 2 Front-
- Steering Wheel, Deluxe
- Tires, 8.55 x 15" 2-Ply Blackwall
- Transmission, Fully Synchronized 3-Speed Column-Shift
- Ventilation, Flo-Thru Body

- C57 Ventilation, Forced-Air Body—N.A. with C60 or C61 ..... \$
- C60 Air Conditioner, Four-Season—N47 required ..... \$421.28
- C61 Air Conditioner, Comfortron—N47 required ..... \$500.27
- D33 Mirror, Remote-Control Outside Rearview ..... \$ 10.53
- D99 Finish, Two-Tone Magic-Mirror ..... \$ 42.13
- F35 Frame, Heavy-Duty Torque-Beam—For trailer towing ..... \$ 18.01
- FG2 Shock Absorbers, Firm-Ride Front and Rear—N.A. with B01, B07, or G66 ..... \$ 5.27
- G51 Springs, Heavy-Duty Rear—For trailer towing—N.A. with B01 or B07 ..... \$ 3.69
- G66 Shock Absorbers, Superlift Rear—N.A. with B01, B07, or FG2 ..... \$ 42.13
- G80 Axle, Anti-Spin Rear ..... \$ 46.60
- J50 Brakes, Pedal-Ease Power—M40 or M41 required. N.A. with JL2 ..... \$ 42.13
- JL2 Brakes, Power with Front Disc—M40 or M41 and N47 required. N.A. with J50 ..... \$ 78.99
- K30 Cruise Control, Automatic—J50 or JL2 and M40 or M41 required ..... \$ 63.19
- L31 Engine, 365-hp Rocket 455 V-8 H.C. (4-bbl. carburetor)—M40 required ..... \$ 47.39
- L32 Engine, 390-hp High-Performance Rocket 455 V-8 H.C. (4-bbl. carburetor)—Includes dual exhaust system. M41 and Y72 required. .... \$ 77.93
- M40 Transmission, Turbo Hydra-matic 400—N.A. with L32 ..... \$227.04
- M41 Transmission, Heavy-Duty Turbo Hydra-matic 400—L32 required ..... \$242.88
- M55 Oil Cooler, Automatic Transmission Auxiliary—For trailer towing. M40 or M41 required ..... \$ 15.80
- N33 Steering Wheel, Tilt-Away—M40 or M41 required ..... \$ 45.29
- N34 Steering Wheel, Custom-Sport—N.A. with N37 ..... \$ 15.80
- N37 Steering Wheel, Tilt-and-Telescope—Includes N42, J50 or JL2, and M40 or M41 required ..... \$ 84.26
- N42 Steering Wheel with Instant-Horn, Deluxe—Included in N37 ..... \$ 15.80
- N47 Steering, Vari-Ratio Power ..... \$115.85
- N99 Wheels, Heavy-Duty 15 x 6.00"—For trailer towing ..... \$ 10.53
- P03 Wheel Discs, Deluxe ..... \$ 31.60
- P26 Tires, 8.55 x 15" 2-Ply Whitewall ..... \$ 43.66
- P80 Tires, H78 x 15" Fiberglass-Belted Whitewall ..... \$101.90
- PQ9 Tires, 8.55 x 15" 4-Ply Custom Whitewall Polyester-Cord ..... \$ 64.41
- T87 Lamps, Cornering—M40 or M41 required ..... \$ 36.86
- U15 Safety Sentinel—N.A. with B01 or B07 ..... \$ 11.59
- U35 Clock, Electric ..... \$ 16.85
- U57 Stereo Tape Player—Includes rear speaker. U58, U59, or U63 required: With U58 ..... \$116.91  
Without U58 ..... \$133.76
- U58 Radio, AM-FM Stereophonic—Includes rear speaker ..... \$238.03
- U59 Radio, AM-FM Signal-Seeker Tuning ..... \$173.78
- U63 Radio, Deluxe Pushbutton ..... \$ 86.89
- U71 Radio Antenna, Power (Front) ..... \$ 31.60
- U80 Radio Speaker, Bi-Phonic Rear—Included with U57 and U58 ..... \$ 16.85
- U89 Wiring Harness, Trailer Electrical ..... \$ 10.53
- W39 Seat Belts, Deluxe Front and Rear Lap and Front Shoulder ..... \$ 13.69
- Y60 Lamps and Mirrors, Convenience—Includes trunk, underhood, and glove compartment lamps, visor vanity mirror, and rearview mirror with map lamp ..... \$ 14.74
- Y72 Engine-Cooling Equipment, Heavy-Duty—Includes special radiator, heavy-duty water pump, Thermo-Cool engine fan, and 55-ampere Delcotron: With C60 or C61 ..... \$ 21.06  
Without C60 or C61 ..... \$ 57.93

### FACTORY-INSTALLED ACCESSORY GROUPS

CODE	ACCESSORY	GROUP 1		GROUP 2	
A91	Trunk-Lid Latch, Power			X	X
B93	Moldings, Chrome Door-Edge Guard	X	X	X	X
U35	Clock, Electric			X	X
U58	Radio, AM-FM Stereophonic			X	X
U59	Radio, AM-FM Signal-Seeker Tuning	X		X	
U63	Radio, Deluxe Pushbutton	X		X	
Y60	Lamps and Mirrors, Convenience	X	X	X	X
Price*		Coupe	\$106.90	\$193.79	\$258.04
		Sedans	\$110.69	\$197.48	\$261.73
				\$142.18	\$229.07
					\$293.32

\*Group price is the sum of the prices of all accessories within the group. Desired option of radio must be specified.



# DELTA 88 ROYALE

## Models • Equipment • Prices

6647 Holiday Coupe

3900.50

### STANDARD EQUIPMENT

- **Armrest**, Front-Seat Center
- **Armrests**, Deluxe Front- and Rear- (with bright accent moldings and backplates)
- **Ashtrays**, Instrument-Panel, R.H. Front-Armrest, and Rear-Armrest
- **Battery**, 73-Ampere-Hour/78-Plate (with standard engine)
- **Battery**, 75-Amp.-Hr./90-Plate (with L31 or L32)
- **Clock**, Electric
- **Delcotron**, 42-Ampere
- **Door Safety Reflectors**, Open-
- **Engine**, 310-hp Rocket 455 V-8 Regular-Fuel (2-bbl. carburetor)
- **Floor Carpeting**, Wall-to-Wall (plus carpeted cowl, door and front-seat-back lower panels)
- **Frame**, Torque-Beam
- **Instrument-Panel Trim**, Wood-Grain-Vinyl
- **Lamps**, Instrument-Panel Ashtray, Courtesy Glove Compartment, and Map
- **Lamps**, Roof Rear-Quarter
- **Lamp Switches**, Automatic Interior-
- **Louver Grilles**, Chrome Front-Fender
- **Molding**, Chrome Hood
- **Moldings**, Chrome Wheel-Opening
- **Moldings**, Chrome Roof Drip
- **Moldings**, Chrome Side-Window Sill
- **Paint Stripes**, Body-Side
- **Rooftop Covering**, Vinyl
- **Seat**, Custom Sport Front
- **Seat Cushions**, Foam-Padded Front- and Rear-
- **Seat Lap Belts**, 3 Front- and 3 Rear-
- **Seat Moldings**, Bright Front-
- **Seat Shoulder Belts**, 2 Front-
- **Steering Wheel**, Deluxe
- **Tires**, 8.55 x 15" 2-Ply Blackwall
- **Transmission**, Fully Synchronized 3-Speed Column-Shift
- **Ventilation**, Flo-Thru Body

- **Wheels**, 15"
- **Wheel Discs**
- **Window Shelf Covering**, Woven-Fiber Rear-
- **Windshield Wipers**, Recessed-Park

### FACTORY-INSTALLED OPTIONS

- A01 **Windows**, Soft-Ray Tinted—Includes A02 ..... \$ 44.23
- A02 **Windshield**, Soft-Ray Tinted ..... \$ 29.49
- A31 **Windows**, Power Side ..... \$110.59
- A42 **Seat Adjuster**, 6-Way Power—For bench seat. N.A. with A51 ..... \$100.05
- A46 **Seat Adjuster**, 4-Way Power—For left-hand bucket seat. A51 required ..... \$ 73.72
- A51 **Seats**, Strato Bucket ..... No Chg.
- A54 **Seat Shoulder Belts**, Deluxe Rear—W39 required ..... \$ 26.33
- A55 **Seat Shoulder Belts**, Rear—N.A. with W39 ..... \$ 23.17
- A82 **Seat Head Restraints**, Dual Front—(Mandatory Option) ..... \$ 17.90
- A91 **Trunk-Lid Latch**, Power ..... \$ 14.74
- A93 **Door Locks**, Power ..... \$ 44.76
- B32 **Floor Mats**, Auxiliary Front ..... \$ 7.37
- B33 **Floor Mats**, Auxiliary Rear ..... \$ 7.16
- B36 **Floor Mat**, Heavy-Duty Rubber Trunk ..... \$ 7.90
- B93 **Moldings**, Chrome Door-Edge Guard ..... \$ 5.27
- C50 **Window Defogger**, Rear ..... \$ 22.12
- C67 **Ventilation**, Forced-Air Body—N.A. with C60 or C61 ..... \$
- C60 **Air Conditioner**, Four-Season—N47 required ..... \$421.28
- C61 **Air Conditioner**, Comforton—N47 required ..... \$500.27
- D33 **Mirror**, Remote-Control Outside Rearview ..... \$ 10.53

- D55 **Console**, Sports—Includes lockable map case with lamp, front and rear console courtesy lamps, and floor-shift control. A51 and M40 or M41 required. N.A. with N33 ..... \$ 61.09
- F35 **Frame**, Heavy-Duty Torque-Beam—For trailer towing ..... \$ 18.01
- FG2 **Shock Absorbers**, Firm-Ride Front and Rear—N.A. with G66 ..... \$ 5.27
- G61 **Springs**, Heavy-Duty Rear—For trailer towing ..... \$ 3.69
- G66 **Shock Absorbers**, Superlift Rear—N.A. with FG2 ..... \$ 42.13
- G80 **Axle**, Anti-Spin Rear ..... \$ 46.60
- J50 **Brakes**, Pedal-Ease Power—M40 or M41 required. N.A. with JL2 ..... \$ 42.13
- JL2 **Brakes**, Power with Front Disc—M40 or M41 and N47 required. N.A. with J50 ..... \$ 78.99
- K30 **Cruise Control**, Automatic—J50 or JL2 and M40 or M41 required ..... \$ 63.19
- L31 **Engine**, 365-hp Rocket 455 V-8 H.C. (4-bbl. carburetor)—M40 required ..... \$ 47.39
- L32 **Engine**, 390-hp High-Performance Rocket 455 V-8 H.C. (4-bbl. carburetor)—Includes dual exhaust system. M41 and Y72 required ..... \$ 77.93
- M40 **Transmission**, Turbo Hydra-matic 400—N.A. with L32 ..... \$227.04
- M41 **Transmission**, Heavy-Duty Turbo Hydra-matic 400—L32 required ..... \$242.88
- M55 **Oil Cooler**, Automatic Transmission Auxiliary—For trailer towing. M40 or M41 required ..... \$ 15.80
- N33 **Steering Wheel**, Tilt-Away—M40 or M41 required. N.A. with D55 ..... \$ 46.29
- N34 **Steering Wheel**, Custom-Sport—N.A. with N37 ..... \$ 15.80
- N37 **Steering Wheel**, Tilt-and-Telescope—Includes N42. J50 or JL2, and M40 or M41 required ..... \$ 84.26
- N42 **Steering Wheel with Instant-Horn**, Deluxe—Included in N37 ..... \$ 15.80
- N47 **Steering**, Vari-Ratio Power ..... \$115.85
- N99 **Wheels**, Heavy-Duty 15 x 6.00"—For trailer towing ..... \$ 10.53
- P03 **Wheel Discs**, Deluxe ..... \$ 31.60
- P26 **Tires**, 8.55 x 15" 2-Ply Whitewall ..... \$ 43.66
- P80 **Tires**, H78 x 15" Fiberglass-Belted Whitewall ..... \$101.90
- PQ9 **Tires**, 8.55 x 15" 4-Ply Custom Whitewall Polyester-Cord ..... \$ 64.41
- T87 **Lamps**, Cornering—M40 or M41 required ..... \$ 36.86
- U15 **Safety Sentinel** ..... \$ 11.59
- U57 **Stereo Tape Player**—Includes rear speaker. U58, U59, or U63 required:
  - With U58 ..... \$116.91
  - Without U58 ..... \$133.76
- U58 **Radio**, AM-FM Stereophonic—Includes rear speaker ..... \$238.03
- U59 **Radio**, AM-FM Signal-Seeker Tuning ..... \$173.78
- U63 **Radio**, Deluxe Pushbutton ..... \$ 86.89
- U71 **Radio Antenna**, Power (Front) ..... \$ 31.60
- U80 **Radio Speaker**, Bi-Phonic Rear—Included with U57 and U58 ..... \$ 16.85
- U89 **Wiring Harness**, Trailer Electrical ..... \$ 10.53
- W39 **Seat Belts**, Deluxe Front and Rear Lap and Front Shoulder:
  - With A51 ..... \$ 12.11
  - Without A51 ..... \$ 13.69
- Y60 **Lamps and Mirrors**, Convenience—Includes trunk and underhood lamps, visor vanity mirror, and rearview mirror with map lamp ..... \$ 11.80
- Y72 **Engine-Cooling Equipment**, Heavy-Duty—Includes special radiator, heavy-duty water pump, Thermo-Cool engine fan, and 55-ampere Delcotron:
  - With C60 or C61 ..... \$ 21.06
  - Without C60 or C61 ..... \$ 57.93

### FACTORY-INSTALLED ACCESSORY GROUPS

CODE	ACCESSORY	GROUP 1			GROUP 2		
A91	Trunk-Lid Latch, Power				X	X	X
B93	Moldings, Chrome Door-Edge Guard	X	X	X	X	X	X
U58	Radio, AM-FM Stereophonic		X			X	
U59	Radio, AM-FM Signal-Seeker Tuning		X			X	
U63	Radio, Deluxe Pushbutton	X			X		
Y60	Lamps and Mirrors, Convenience	X	X	X	X	X	X
Price*		\$103.96	\$190.85	\$255.10	\$118.70	\$205.59	\$269.84

\*Group price is the sum of the prices of all accessories within the group. Desired option of radio must be specified.

# NINETY-EIGHT

## Models • Equipment • Prices

8469 Town Sedan 8439 Holiday Sedan 8639 Luxury Sedan Hardtop  
8669 Luxury Sedan 8457 Holiday Coupe 8467 Convertible

### STANDARD EQUIPMENT

- **Armrest, Front-Seat Center** (except Town Sedan)
- **Armrest, Rear-Seat Center** (Luxury Sedans)
- **Armrests, Deluxe Front- and Rear-** (with bright accent moldings and backplates—Town Sedan)
- **Armrests with Chrome Ashtrays and Lighters, Deluxe Integral Rear-Quarter** (Coupe and Convertible)
- **Armrests with Chrome Power Controls, Deluxe Integral Front** (except Town Sedan)
- **Ashtrays, Instrument-Panel, R.H. Front-Armrest and Rear-Armrest**
- **Battery, 75-Ampere-Hour/90-Plate**
- **Brakes, Pedal-Ease Power**
- **Cigar Lighters, Instrument-Panel and 2 Front-Seat-Back** (Town Sedan)
- **Cigar Lighters, Instrument-Panel and Rear-Armrest** (except Town Sedan)
- **Clock, Electric**
- **Delcotron, 42-Ampere**
- **Engine, 365-hp Rocket 455 V-8 H.C. (4-bbl. carburetor)**
- **Floor Carpeting, Wall-to-Wall** (plus carpeted cowl, door, and front-seat-back lower panels)
- **Frame, Torque-Beam**
- **Frame, Heavy-Duty Torque-Beam** (Convertible)
- **Instrument-Panel Trim, Wood-Grain-Vinyl**
- **Lamps, Door Courtesy and Open-Door Warning** (Convertible and Luxury Sedans)
- **Lamps, Instrument-Panel Ashtray, Courtesy, Glove Compartment, and Map**
- **Lamps, Rear-Armrest Courtesy** (Convertible)
- **Lamps, Roof Rear-Quarter** (Sedans and Coupe)
- **Lamp Switches at All Doors, Automatic Interior-Molding, Chrome Hood**
- **Moldings, Chrome Lower Body-Side, Fender, and Wheel-Opening**
- **Moldings, Chrome Roof Drip** (Sedans and Coupe)
- **Moldings, Chrome Side-Window Sill**
- **Paint Stripes, Body-Side**
- **Pedals, Chrome-Accented**

- **Seat, Armrest Bench Front** (Luxury Sedans)
- **Seat, Bench Front** (Town Sedan)
- **Seat, Custom Sport Front** (Holiday models and Convertible)
- **Seat Adjuster, 2-Way Power Driver's** (except Town Sedan)
- **Seat Cushions, Foam-Padded Front- and Rear-**
- **Seat Lap Belts, 3 Front and 3 Rear Deluxe**
- **Seat Shoulder Belts, 2 Front Deluxe** (Sedans and Coupe)
- **Seat Moldings, Bright Front-**
- **Steering, Vari-Ratio Power**
- **Steering Wheel, Deluxe**
- **Tires, 8.85 x 15" 2-Ply Blackwall**
- **Top, Power** (Convertible)
- **Tire Cover, Spare** (Luxury Sedans)

- **Transmission, Turbo Hydra-matic 400** (column-shift)
- **Ventilation, Flo-Thru Body**
- **Wheels, 15"**
- **Wheel Discs**
- **Wheel-Opening Covers, Rear-**
- **Windows, Power Side** (except Town Sedan)
- **Window Shelf Covering, Woven-Fiber Rear-** (Sedans and Coupe)
- **Windshield Wipers, Recessed-Park**

### FACTORY-INSTALLED OPTIONS

- A01 Windows, Soft-Ray Tinted—includes A02** \$ 44.23
- A02 Windshield, Soft-Ray Tinted** \$ 29.48
- A31 Windows, Power Side—Town Sedan** \$110.59
- A42 Seat Adjuster, 6-Way Power—N.A. with AM6:**  
Except Town Sedan \$ 73.72  
Town Sedan \$100.05
- A82 Seat Head Restraints, Dual Front—** (Mandatory Option) \$ 17.90
- AG1 Seat Adjuster, 6-Way Power Driver's-Side—**  
AM6 required. Luxury Sedan Hardtop \$ 73.72
- AG2 Seat Adjuster, 6-Way Power Passenger's-**  
Side, AM6 and AG1 required. Luxury Sedan  
Hardtop \$100.05
- AM6 Seat with Dual Controls, Divided Front—**  
Includes 2-way power driver's-side adjuster,  
N.A. with A42. Luxury Sedan Hardtop \$ 78.99

- A85 Seat Shoulder Belts, Deluxe Front—** (Convertible) \$ 26.33
- A84 Seat Shoulder Belts, Deluxe Rear—** \$ 26.33
- A91 Trunk-Lid Latch, Power** \$ 14.74
- A93 Door Locks, Power—For all doors:**  
Coupe and Convertible \$ 44.76  
Sedans \$ 68.46
- B32 Floor Mats, Auxiliary Front** \$ 7.37
- B33 Floor Mats, Auxiliary Rear** \$ 7.16
- B36 Floor Mat, Heavy-Duty Rubber Trunk** \$ 7.90
- B93 Moldings, Chrome Door-Edge Guard:**  
Coupe and Convertible \$ 5.27  
Sedans \$ 8.96
- C08 Rooftop Covering, Vinyl—Sedans and Coupe** \$136.92
- C50 Window Defogger, Rear—** (Sedans and Coupe) \$ 22.12
- C57 Ventilation, Forced-Air Body—N.A. with C60 or C61** \$
- C60 Air Conditioner, Four-Season** \$421.28
- C61 Air Conditioner, Comfortron** \$500.27
- D33 Mirror, Remote-Control Outside Rearview** \$ 10.53
- D99 Finish, Two-Tone Magic-Mirror—Sedans and Coupe** \$ 42.13
- F35 Frame, Heavy-Duty Torque-Beam—For trailer towing. Sedans and Coupe** \$ 18.01
- FG2 Shock Absorbers, Firm-Ride Front and Rear—**  
N.A. with G65 \$ 5.27
- G51 Springs, Heavy-Duty Rear—For trailer towing** \$ 3.69
- G66 Shock Absorbers, Superlift Rear—Sedans and Coupe** \$ 42.13
- G80 Axle, Anti-Spin Rear** \$ 46.60
- JL2 Brakes, Power with Front Disc** \$ 52.66
- K30 Cruise Control, Automatic** \$ 63.19
- M55 Oil Cooler, Automatic Transmission Auxiliary—**  
For trailer towing \$ 15.80
- N33 Steering Wheel, Tilt-Away** \$ 45.29
- N34 Steering Wheel, Custom-Sport—N.A. with N37** \$ 15.80
- N37 Steering Wheel, Tilt-and-Telescope—**  
Includes N42 \$ 84.26
- N42 Steering Wheel with Instant-Horn, Deluxe—**  
Included in N37 \$ 15.80
- N99 Wheels, Heavy-Duty 15 x 6.00—For trailer towing** \$ 10.53
- P03 Wheel Discs, Deluxe** \$ 31.60
- P26 Tires, 8.85 x 15" 2-Ply Whitewall** \$ 48.76
- P80 Tires, 178 x 15" Fiberglass-Belted Whitewall** \$114.96
- PQ9 Tires, 8.85 x 15" 4-Ply Custom Whitewall Polyester-Cord** \$ 72.25
- T87 Lamps, Cornering** \$ 36.86
- U15 Safety Sentinel** \$ 11.59
- U57 Stereo Tape Player—Includes rear speaker.**  
U58 U59, or U63 required:  
With U58 \$116.91  
Without U58 \$133.76
- U58 Radio, AM-FM Stereophonic—Includes rear speaker** \$238.03
- U59 Radio, AM-FM Signal-Seeker Tuning** \$173.78
- U63 Radio, Deluxe Pushbutton** \$ 86.89
- U71 Radio Antenna, Power (Front)** \$ 31.60
- U80 Radio Speaker, Bi-Phonic Rear—Included with U57 and U58** \$ 16.85
- U85 Wiring Harness, Trailer Electrical** \$ 10.53
- Y60 Lamps and Mirrors, Convenience—Includes trunk and underhood lamps, visor vanity mirror, and rearview mirror with map lamp** \$ 11.80
- Y72 Engine-Cooling Equipment, Heavy-Duty—**  
Includes special radiator, heavy-duty water pump, Thermo-Cool engine fan, and 55-ampere Delcotron:  
With C60 or C61 \$ 21.06  
Without C60 or C61 \$ 57.93
- Y74 Paint Stripes, Delete Body-Side** No Chg.

### FACTORY-INSTALLED ACCESSORY GROUP

CODE	ACCESSORY	GROUP 1		
A91	Trunk-Lid Latch, Power	X	X	X
B93	Moldings, Chrome Door-Edge Guard	X	X	X
U58	Radio, AM-FM Stereophonic			X
U59	Radio, AM-FM Signal-Seeker Tuning		X	
U63	Radio, Deluxe Pushbutton	X		
Y60	Lamps and Mirrors, Convenience	X	X	X
Price*				
		2-door models	\$118.70	\$205.59 \$269.84
		4-door models	\$122.39	\$209.28 \$273.59

\*Group price is the sum of the prices of all accessories within the group. Desired option of radio must be specified.



# TORONADO

## Models • Equipment • Prices

9487 Deluxe Coupe

4903.50

### STANDARD EQUIPMENT

- **Armrests**, Deluxe Front- (with bright accent moldings and backplates)
- **Armrests**, Deluxe Integral Rear-Quarter
- **Ashtrays**, Instrument-Panel, R.H. Front-Door, and Rear-Armrest
- **Battery**, 75-Ampere-Hour/90-Plate
- **Brakes**, Pedal-Ease Power
- **Cigar Lighter**, Instrument-Panel
- **Clock**, Electric
- **Delcotron**, 42-Ampere
- **Engine**, 375-hp Rocket 455 V-8 H.C. (4-bbl. carburetor)

- **Floor Carpeting**, Wall-to-Wall (plus carpeted cowl, door, and front-seat-back lower panels)
- **Instrument-Panel Trim**, Wood-Grain-Vinyl
- **Frame**, Torque-Beam
- **Lamps**, Instrument-Panel Courtesy and Glove Compartment
- **Lamps**, Roof Rear-Quarter
- **Lamp Switches**, Automatic Interior-
- **Moldings**, Chrome Rocker Panel and Wheel-Opening
- **Moldings**, Chrome Roof Drip
- **Moldings**, Chrome Side-Window Sill
- **Pedals**, Chrome-Accented
- **Seat**, Bench Front (See A51)
- **Seat Cushions**, Foam-Padded Front- and Rear-
- **Seat Lap Belts**, 3 Front- and 3 Rear-
- **Seat Moldings**, Bright Front-
- **Seat Shoulder Belts**, 2 Front-
- **Steering**, Vari-Ratio Power

- **Steering Wheel**, Deluxe
- **Tires**, 8.85 x 15" 2-Ply Blackwall
- **Transmission**, Turbo Hydra-matic 400 (column-shift)
- **Ventilation**, Flo-Thru Body
- **Wheels**, 15"
- **Wheel Hubcaps**
- **Windshield Wipers**, Recessed-Park

### FACTORY-INSTALLED OPTIONS

- A01 **Windows**, Soft-Ray Tinted—Includes A02 ..... \$ 47.39
- A02 **Windshield**, Soft-Ray Tinted ..... \$ 29.49
- A31 **Windows**, Power Side ..... \$110.59
- A42 **Seat Adjuster**, 6-Way Power—For bench seat. N.A. with A51 ..... \$100.05
- A46 **Seat Adjuster**, 4-Way Power—For left-hand bucket seat. A51 required ..... \$ 73.72
- A51 **Seats**, Strato Bucket ..... No Chg.
- A54 **Seat Shoulder Belts**, Deluxe Rear- —W39 required ..... \$ 26.33
- A55 **Seat Shoulder Belts**, Rear- —N.A. with W39 ..... \$ 23.17
- A82 **Seat Head Restraints**, Dual Front- —(Mandatory Option) ..... \$ 17.90
- A91 **Trunk-Lid Latch**, Power ..... \$ 14.74
- A93 **Door Locks**, Power ..... \$ 44.76
- B32 **Floor Mat**, Auxiliary Front ..... \$ 10.00
- B33 **Floor Mat**, Auxiliary Rear ..... \$ 7.37
- B36 **Floor Mat**, Heavy-Duty Rubber Trunk ..... \$ 7.90
- B93 **Moldings**, Chrome Door-Edge Guard ..... \$ 5.27
- C08 **Roof Top Covering**, Vinyl ..... \$126.38
- C49 **Window**, Electric Defogging Rear—A01 required ..... \$ 47.39

- C60 **Air Conditioner**, Four-Season ..... \$421.28
- C61 **Air Conditioner**, Comfortron ..... \$500.27
- D33 **Mirror**, Remote-Control Outside Rearview ..... \$ 10.53
- D55 **Console**, Sports—Includes lockable map case with lamp, front and rear console lamps, and floor-shift control. A51 required. N.A. with N33 ..... \$ 50.56
- G66 **Shock Absorbers**, Superlift Rear ..... \$ 42.13
- JL2 **Brakes**, Power with Front Disc ..... \$ 52.66
- K30 **Cruise Control**, Automatic ..... \$ 63.19
- M55 **Oil Cooler**, Automatic Transmission Auxiliary —For trailer towing ..... \$ 15.80
- N33 **Steering Wheel**, Tilt-Away—N.A. with D55 ..... \$ 45.29
- N37 **Steering Wheel**, Tilt-and-Telescope—Includes N42 ..... \$ 84.26
- N42 **Steering Wheel with Instant-Horn**, Deluxe —Included in N37 ..... \$ 15.80
- N98 **Wheels and Trim Rings**, Chrome Open-Spider ..... \$ 89.52
- P03 **Wheel Discs**, Deluxe—N.A. with N98 ..... \$ 40.02
- P06 **Wheel Trim Rings**, Chrome—Included in N98 ..... \$ 18.43
- P26 **Tires**, 8.85 x 15" 2-Ply Whitewall ..... \$ 48.76
- P80 **Tires**, J78 x 15" Fiberglass-Belted Whitewall ..... \$114.96
- PQ9 **Tires**, 8.85 x 15" 4-Ply Custom Whitewall Polyester-Cord ..... \$ 72.25
- T87 **Lamps**, Cornering ..... \$ 36.86
- U57 **Stereo Tape Player**—Includes rear speaker. U58, U59, or U63 required: With U58 ..... \$116.91 Without U58 ..... \$133.76
- U58 **Radio**, AM-FM Stereophonic—Includes rear speaker ..... \$238.03
- U59 **Radio**, AM-FM Signal-Seeker Tuning ..... \$173.78
- U63 **Radio**, Deluxe Pushbutton ..... \$ 86.89
- U71 **Radio Antenna**, Power (Front) ..... \$ 31.60
- U80 **Radio Speaker**, Bi-Phonic Rear—Included with U57 and U58 ..... \$ 16.85
- U89 **Wiring Harness**, Trailer Electrical ..... \$ 10.53
- W34 **Engine**, 400-hp Rocket 455 V-8 H.C.—Includes dual exhausts ..... \$ 47.39
- W39 **Seat Belts**, Deluxe Front and Rear Lap and Front Shoulder: With A51 ..... \$ 12.11 Without A51 ..... \$ 13.69
- Y60 **Lamps and Mirrors**, Convenience—Includes trunk and underhood lamps, visor vanity mirror, and rearview mirror with map lamp, plus door courtesy and open-door warning lamps with Y69: Without Y69 ..... \$ 11.80 With Y69 ..... \$ 24.96
- Y62 **Paint**, Special Order—Includes selection of Amethyst (1), Caribbean Turquoise (U) or Nugget Gold (X) ..... \$ 83.20
- Y69 **Interior**, Custom—Includes Strato Bench or Strato Bucket Front Seats; custom upholstery, sidewall trim panels, door pull handles, cigar lighters in rear-armrest ashtrays ..... \$173.78
- Y70 **Paint Stripes**, Body-Side ..... \$ 10.63
- Y72 **Engine-Cooling Equipment**, Heavy-Duty—Includes special radiator, heavy-duty water pump, Thermo-Cool engine fan, and 55-ampere Delcotron: With C60 or C61 ..... \$ 5.27 Without C60 or C61 ..... \$ 67.93

### FACTORY-INSTALLED ACCESSORY GROUP

CODE	ACCESSORY	GROUP 1		
A91	Trunk-Lid Latch, Power	X	X	X
B93	Moldings, Chrome Door-Edge Guard	X	X	X
U58	Radio, AM-FM Stereophonic			X
U59	Radio, AM-FM Signal-Seeker Tuning		X	
U63	Radio, Deluxe Pushbutton	X		
Y60	Lamps and Mirrors, Convenience	X	X	X
Price*		With Y69	\$131.85	\$218.75
		Without Y69	\$118.70	\$205.59
				\$269.84

\*Group price is the sum of the prices of all accessories within the group. Desired option of radio must be specified.

# POLICE APPREHENDER EQUIPMENT

*Models Available with Police  
Apprehender Options B01 and B07*

## DELTA 88

5469 Town Sedan  
5487 Holiday Coupe  
5439 Holiday Sedan

## DELTA 88 CUSTOM

6469 Town Sedan  
6487 Holiday Coupe  
6439 Holiday Sedan

## FACTORY-INSTALLED BASIC OPTIONS

### City Cruiser

**B01 Suspension**, Heavy-Duty—Automatic transmission (M31, M40, or M41) required. N.A. with Firm-Ride Shock Absorbers (FG2), Heavy-Duty Rear Springs (G51), Superlift Rear Shock Absorbers (G66) or Safety Sentinel (U15). Order U11, if required \$ 8.43

Includes:

- **Shock Absorbers**, Heavy-Duty Front and Rear . . . Calibrated to extra-stiff springs.
- **Springs**, Heavy-Duty Front . . . 365 lb./in. rate compared to 335 for Delta 88 Custom and 310 for Delta 88.
- **Springs**, Heavy-Duty Rear . . . 125 lb./in. rate compared to 125 for Delta 88 Custom and 105 for Delta 88.
- **Stabilizer Bar**, Heavy-Duty Front . . . 1.031-in. diameter compared to .968.

### Highway Patrol

**B07 Suspension with Rear Stabilizer Bar**, Heavy-Duty—Automatic transmission (M31, M40, or M41) required. N.A. with Firm-Ride Shock Absorbers (FG2), Heavy-Duty Rear Springs (G51), Superlift Rear Shock Absorbers (G66) or Safety Sentinel (U15). Order U11, if required . . . \$ 17.80

Includes:

- **Shock Absorbers**, Heavy-Duty Front and Rear . . . Calibrated to extra-stiff springs.
- **Springs**, Heavy-Duty Front . . . 560 lb./in. rate compared to 335 for Delta 88 Custom and 310 for Delta 88.
- **Springs**, Heavy-Duty Rear . . . 260 lb./in. rate compared to 125 for Delta 88 Custom and 105 for Delta 88.
- **Stabilizer Bar**, Heavy-Duty Front . . . 1.031-in. diameter compared to .968.
- **Stabilizer Bar**, Heavy-Duty Rear . . . Added .875-in. diameter bar.
- **Suspension Lower Control Arms**, Heavy-Duty Rear . . . Reinforced.

## OTHER FACTORY-INSTALLED OPTIONS SUITABLE FOR POLICE CARS

**A74 Seats**, Heavy-Duty Front and Rear—Includes heavy-duty interlaced springs with foam padding. Delta 88 Sedans . . . \$ 15.27

**A82 Seat Head Restraints**, Dual Front—(Mandatory Option) . . . \$ 17.90

**A93 Door Locks**, Power—For all doors:  
Coupe . . . \$ 44.76  
Sedans . . . \$ 68.46

**BG1 Floor Covering**, Heavy-Duty Black-Vinyl Front and Rear—Town Sedans . . . \$ 10.53

**B84 Moldings**, Bodyguard Side—Delta 88 \$ 12.64

**C50 Window Defogger**, Rear . . . \$ 22.12

**L31 Engine**, 365-hp Rocket 455 V-8 H.C. (4-bbl. carburetor)—M40 required:  
Delta 88 . . . \$110.59  
Delta 88 Custom . . . \$ 47.39

**L32 Engine**, 390-hp High-Performance Rocket 455 V-8 H.C. (4-bbl. carburetor)—Includes dual exhaust system. M41 and Y72 required:  
Delta 88 . . . \$141.13  
Delta 88 Custom . . . \$ 77.93

**M31 Transmission**, Jetaway—standard engine required. Delta 88 . . . \$184.80

**M40 Transmission**, Turbo Hydra-matic 400—N.A. with L32 . . . \$227.04

**C60 Air Conditioner**, Four-Season—N40 or N47 required . . . \$421.28

**C61 Air Conditioner**, Comfortron—N40 or N47 required . . . \$500.27

**G80 Axle**, Anti-Spin Rear . . . \$ 46.60

**J50 Brakes**, Pedal-Ease Power—M31, M40, or M41 required. N.A. with JL2 or J55 . . . \$ 42.13

**JL2 Brakes**, Power with Front Disc—M31, M40, or M41 and N40 or N47 required. N.A. with J50 or J55 . . . \$ 78.99

**tJ55 Brakes**, Heavy-Duty Power with Front Disc—Single piston front disc brakes with heavy-duty non-fading linings; 11.00 x 2½-in. duo-servo heavy-duty rear brakes; power brake application. Includes N99, M31, M40, or M41 required. N.A. with J50 or JL2 . . . \$ 94.79

**1K81 Delcotron**, Heavy-Duty—60-ampere/hour alternator with solid state transistorized regulator; 19-ampere/hour at idle . . . \$ 21.06

**L30 Engine**, 310-hp Rocket 455 V-8 Regular-Fuel (2-bbl. carburetor). N.A. with M31, or M41. Delta 88 . . . \$ 63.19

**M41 Transmission**, Heavy-Duty Turbo Hydra-matic 400—L32 required . . . \$242.88

**N40 Steering**, Roto-Matic Power—Delta 88 . . . \$110.59

**N47 Steering**, Vari-Ratio Power—Delta 88 Custom . . . \$115.85

**N99 Wheels**, Heavy-Duty 15 x 6.00"—Included in J55 . . . \$ 10.53

**tU11 Speedometer**, Certified Police. Calibrated in increments of 2 mph from 0 to 120 mph and accurate within plus or minus 2 percent throughout speed range . . . \$ 3.16

**tU90 Wiring Harness with Roof Panel Reinforcement**, Roof Flasher—Roof flasher not included. Sedans . . . \$ 16.85

**Y72 Engine-Cooling Equipment**, Heavy-Duty—Includes 2.70-in. thick heavy-duty radiator, heavy-duty water pump, 6-blade Thermo-Cool engine fan, and 55-ampere Delcotron: With C60 or C61 . . . \$ 21.06  
Without C60 or C61 . . . \$ 57.93

t—For police usage only.

For other options suitable for police cars, see preceding Delta 88 and Delta 88 Custom equipment pages.



# TRAILER-TOWING EQUIPMENT . . . RECOMMENDED FACTORY-INSTALLED OPTIONS FOR SPECIFIC MODELS AND TRAILER WEIGHTS

## POWER TRAIN

### LIGHT WEIGHT

(S.A.E. Class 1)

Gross Trailer Weight (lb.) ..... 1000-2000  
Max. Tongue Load (lb.) ..... 200

NOTE: No special equipment is usually required for trailers weighing less than 1000 pounds.

Axle, 2.93-to-1 Ratio (G94)	—	R	R	—	—	—	—	—	Frame, Heavy-Duty Torque-Beam (F35)	—	Afg	Af	Afg	—	—	—	—
Axle, 3.08-to-1 Ratio (G90)	—	—	—	R	R	R	R	R	Shock Absorbers, Superlift Rear (G66)	A	R	R	R	R	Aa	R	R
Engine, 375-hp Rocket 455 V-8 H.C.	S	—	—	—	—	—	—	—	Springs, Heavy-Duty Rear (G51)	—	Ah	Ah	Ah	Ah	Rah	Ah	Ah
Engine, 365-hp Rocket 455 V-8 H.C. (L31)	—	S	Aa	Aa	—	—	—	—	Tires, Fiberglass-Belted (P80, P81)	A	A	A	A	A	A	A	A
Engine, 310-hp Rocket 455 V-8 (L30)	—	—	S	A	—	—	—	—	Trailer Electrical Wiring Harness (U89)	R	R	R	R	R	R	R	R
Engine, 325-hp Rocket 400 V-8 H.C. (L31)	—	—	—	—	Aa	S	—	—	Wheels, Heavy-Duty (N99)	—	R	R	R	—	—	—	—
Engine, 310-hp Rocket 350 V-8 H.C. (L74)	—	—	—	—	R	—	S	R	<b>Trailer Hitch</b> —The attachment for towing a trailer requires careful consideration. While a bumper hitch may be satisfactory for lightweight types of trailers, the hitch for heavier trailers must not attach to the rear bumper or frame rear crossmember only, but must be designed to distribute the load to suitable structural members of the vehicle. Since there are many types, weights, and sizes of trailers, and numerous trailer hitch designs, each having its individual performance characteristics, it is not practical for Oldsmobile to thoroughly test and evaluate the merits of each. Oldsmobile is therefore unable to offer specific recommendations or assume responsibility for the operation of trailer hitches—which are not manufactured or supplied by Oldsmobile. When a trailer is attached to a car, the car becomes not only a load-carrying vehicle, but a load-pulling vehicle. The demands of this type of operation are very different from those for which the automobile is primarily designed and may present problems, such as spring and tire loading, braking, cooling, lighting, and steering. However, careful driving practices and the use of factory-recommended equipment will better satisfy the requirements of trailer towing.								
Engine, 250-hp Rocket 350 V-8 (L65)	—	—	—	S	S	—	—	S									
Engine-Cooling Equipment, H.D. (Y72)	Rb	Rb	Rb	Rb	Rb	Rb	R	R									
Transmission, Turbo Hydra-matic 400 (M40)	S	S	R	R	R	R	—	—									
Transmission, Turbo Hydra-matic 350 (M38)	—	—	—	—	—	—	Rd	Rd									
Transmission, Jetaway Automatic (M31)	—	—	—	A	—	—	—	Ad									
Trans. Aux. Oil Cooler, Auto. (M55)	Rb	Rb	Rb	Rb	Rb	Rt	Rb	Rb									

### MEDIUM WEIGHT

(S.A.E. Class 2)

Gross Trailer Weight (lb.) ..... 2000-3500  
Max. Tongue Load (lb.) ..... 350

Axle, 2.93-to-1 Ratio (G94)	—	M	M	—	—	—	—	—	Frame, Heavy-Duty Torque-Beam (F35)	—	Afg	Af	Afg	—	—	—	—
Axle, 3.08-to-1 Ratio (G90)	—	—	—	M	M	M	M	M		—	—	—	—	—	—	—	—
Engine, 375-hp Rocket 455 V-8 H.C.	S	—	—	—	—	—	—	—	Shock Absorbers, Superlift Rear (G66)	R	Aj	Aj	Aj	Aj	Aa	M	M
Engine, 365-hp Rocket 455 V-8 H.C. (L31)	—	S	Aa	Aa	—	—	—	—		—	—	—	—	—	—	—	—
Engine, 310-hp Rocket 455 V-8 (L30)	—	—	S	R	—	—	—	—	Springs, Heavy-Duty Rear (G51)	—	Ah	Ah	Ah	M	Ma	M	M
Engine, 325-hp Rocket 400 V-8 (L31)	—	—	—	—	Ra	S	—	—		—	—	—	—	—	—	—	—
Engine, 310-hp Rocket 350 V-8 (L74)	—	—	—	M	M	—	S	M	Tires, Fiberglass-Belted (P80, P81)	—	R	R	R	R	R	R	R
Engine-Cooling Equipment, H.D. (Y72)	M	M	M	M	M	M	M	M		—	—	—	—	—	—	—	—
Transmission, Turbo Hydra-matic 400 (M40)	S	S	M	M	M	M	—	—	Trailer Electrical Wiring Harness (U89)	R	R	R	R	R	R	R	R
Transmission, Turbo Hydra-matic 350 (M38)	—	—	—	—	—	—	Mi	Ri		—	—	—	—	—	—	—	—
Transmission, Jetaway Automatic (M31)	—	—	—	—	—	—	—	Mi	Trailer Hitch, Equalizing Load-Leveling	R	R	R	R	R	R	R	R
Trans. Aux. Oil Cooler, Auto. (M55)	M	M	M	M	M	M	M	M		—	R	R	R	R	—	—	—
									Wheels, Heavy-Duty (N99)	—	R	R	R	—	—	—	—

### HEAVY WEIGHT

(S.A.E. Class 3)

Gross Trailer Weight (lb.) ..... 3500-5000  
Max. Tongue Load (lb.) ..... 500

NOTE: Vista-Cruiser recommended for heavy-duty towing only without Air Conditioner (C60).

Axle, 2.93-to-1 Ratio (G94)	—	M	M	M	—	—	—	—	Brakes, Power with Front Disc (JL2)	—	R	R	R	R	—	—	—
Axle, 3.08-to-1 Ratio (G90)	—	—	—	—	M	—	—	—	Frame, Heavy-Duty Torque-Beam (F35)	—	Ma	M	Mg	—	—	—	—
Engine, 365-hp Rocket 455 V-8 H.C. (L31)	—	S	M	M	—	—	—	—	Shock Absorbers, Superlift Rear (G66)	—	M	M	M	Aj	—	—	—
Engine, 310-hp Rocket 455 V-8 (L30)	—	—	S	—	—	—	—	—	Springs, Heavy-Duty Rear (G51)	—	M	M	M	M	—	—	—
Engine, 325-hp Rocket 400 V-8 H.C. (L31)	—	—	—	—	M	—	—	—	Tires, Fiberglass-Belted (P80)	—	R	R	R	R	—	—	—
Engine-Cooling Equipment, H.D. (Y72)	—	M	M	M	M	—	—	—	Trailer Electrical Wiring Harness (U89)	—	R	R	R	R	—	—	—
Transmission, Turbo Hydra-matic 400 (M40)	—	S	M	M	M	—	—	—	Trailer Hitch, Equalizing Load-Leveling	—	R	R	R	R	—	—	—
Trans. Aux. Oil Cooler, Auto. (M55)	—	M	M	M	M	—	—	—	Wheels, Heavy-Duty (N99)	—	R	R	R	—	—	—	—

A—Available. M—Mandatory. R—Recommended. S—Standard equipment.

a—Turbo Hydra-matic 400 (M40) required. b—Mandatory for unusually high temperatures, heavy traffic, hilly terrain, or towing trailers that extend beyond the frontal area of the car. d—250-hp or 310-hp Rocket 350 V-8 (L65 or L74) required (310-hp V-8 required in F-85). e—250-hp Rocket 350 V-8 required. f—Fiberglass-Belted Tires (P80, P81) and Heavy-Duty Wheels (N59) recommended. g—Standard in Convertible. h—Recommended if towing is continuous. i—310-hp Rocket 350 V-8 (L74) required. j—Recommended in place of Heavy-Duty Rear Springs (G51) if towing is intermittent.

# COLORS . . . Recommended Exterior and Interior Color Combinations

EXTERIOR COLORS	CODE	INTERIOR COLORS	VINYL ROOFTOP COLORS	CONVERTIBLE TOP COLORS	PAINT STRIPE COLORS
		Black, Antique Parchment or	Black, Antique Parchment or	Black, White or	
Ebony Black*	A	Any Other Color	Blue, Sable, Green	Blue, Gold	White, Blue, Gold, Red
Sable*	B	Gold, Sandalwood	Sable	Gold	Black, White, Gold
Cameo White	C	Any Other Color	Burgundy, Blue, Sable, Green	Blue, Gold	Black, Blue, Gold, Red
Nassau Blue	D	Blue	Blue	Blue	Black, White, Blue
Trophy Blue	E	Blue	Blue	Blue	Black, White, Blue
Topaz	G	Gold, Sandalwood	Sable	Gold	Black, White, Red, Gold
Meadow Green	H	Green	Green	No Other Color	Black, White
Aztec Gold	J	Gold, Sandalwood	Sable	Gold	Black, White, Gold
Tahitian Turquoise*	K	Turquoise	No Other Color	No Other Color	Black, White
Glade Green	M	Green	Green	No Other Color	Black, White, Gold
Burgundy Mist	N	No Other Color	Burgundy	No Other Color	Black, White, Gold, Red
Platinum	P	Blue, Red	Blue	Blue	Black, White, Blue, Red
Crimson*	R	Red	No Other Color	No Other Color	Black, White, Red
Palomino Gold*	S	Gold, Sandalwood	Sable	Gold	Black, White, Gold
Saffron*	Y	Gold, Sandalwood	Sable	Gold	Black, White, Gold

## Exclusive Toronado Colors

Powder Blue	F	Blue	Blue	—	Black, White, Blue
Deauville Gray	L	No Other Color	No Other Color	—	Black, White, Red
Covert Beige	T	Gold	Sable	—	Black, White, Gold
Flamingo Silver	V	No Other Color	Burgundy	—	Black, White

Chestnut Bronze	W	No Other Color	No Other Color	—	Black, White, Gold
Autumn Gold	Z	Gold	Sable	—	Black, White, Gold

## Special Order (Extra Cost) Toronado Colors

Amethyst	I	No Other Color	No Other Color	—	Black, White
Caribbean Turquoise	U	No Other Color	No Other Color	—	Black, White
Nugget Gold	X	Gold	Sable	—	Black, White, Gold

INTERIOR COLORS	INTERIOR COMPONENT COLORS
Black	Headlining..... Black Floor Covering..... Black Instrument Panel..... Black Standard Seat Belts..... Black Deluxe Seat Belts..... Black
Green	Headlining..... Medium Green Floor Covering..... Dark Green Instrument Panel..... Dark Green Standard Seat Belts..... Dark Green Deluxe Seat Belts..... Dark Green
Blue	Headlining..... Medium Blue Floor Covering..... Dark Blue Instrument Panel..... Dark Blue Standard Seat Belts..... Dark Blue Deluxe Seat Belts..... Dark Blue
Gold	Headlining..... Medium Gold Floor Covering..... Dark Gold Instrument Panel..... Dark Gold Standard Seat Belts..... Medium Gold Deluxe Seat Belts..... Medium Gold
Red	Headlining..... Medium Red*** Floor Covering..... Dark Red Instrument Panel..... Dark Red Standard Seat Belts..... Black Deluxe Seat Belts..... Dark Red
Turquoise	Headlining..... Medium Turquoise Floor Covering..... Dark Turquoise Instrument Panel..... Dark Turquoise Standard Seat Belts..... Black Deluxe Seat Belts..... Dark Turquoise
Antique Parchment	Headlining..... Antique Parchment Floor Covering..... Black Instrument Panel..... Black Standard Seat Belts..... Black Deluxe Seat Belts..... Ant. Parch.
Sandlewood	Headlining..... Sandlewood Floor Covering..... Dark Sandlewood Instrument Panel..... Dark Sandlewood Deluxe Seat Belts..... Dark Sandlewood

# TWO-TONE—Recommended Exterior and Interior Color Combinations

BASIC** EXTERIOR COLOR	SECOND EXTERIOR COLOR	C O D E	INTERIOR COLORS	BASIC** EXTERIOR COLOR	SECOND EXTERIOR COLOR	C O D E	INTERIOR COLORS	BASIC** EXTERIOR COLOR	SECOND EXTERIOR COLOR	C O D E	INTERIOR COLORS
			Black or				Antique Parchment or				
	Saffron	Y	No Other Color		Trophy Blue	E	Blue		Nassau Blue	D	Blue
	Cameo White	C	Antique Parchment		Crimson	R	Red	Trophy Blue (E)	Platinum	P	Blue
	Crimson	R	Red		Nassau Blue	D	Blue		Platinum	P	Blue
	Nassau Blue	D	Blue		Tahitian Turq.	K	Turquoise	Nassau Blue (D)			
Ebony	Tahitian Turq.	K	Turquoise	Cameo	Glade Green	M	Green	Glade Green (M)	Meadow Green	H	Green
Black	Meadow Green	H	Green	White	Meadow Green	B	Gold, Sandalwood				
(A)	Palomino Gold	S	Gold, Sandalwood	(C)	Sable	B	Gold, Sandalwood		Palomino Gold	S	Gold, Sandalwood
	Topaz	G	Gold, Sandalwood		Palomino Gold	S	Gold, Sandalwood	Sable (B)	Topaz	G	Gold, Sandalwood
	Burgundy Mist	N	Red		Topaz	G	Gold, Sandalwood		Aztec Gold	J	Gold, Sandalwood
	Platinum	P	No Other Color		Burgundy Mist	N	Red	Topaz (G)	Aztec Gold	J	Gold, Sandalwood
	Aztec Gold	J	Gold, Sandalwood		Aztec Gold	J	Gold, Sandalwood				

\*Not available on Toronado.

\*\*Basic Exterior Color is lower body color. However, colors may be reversed.

\*\*\*Dark Red for Station Wagons.



# POWER TEAMS . . . Engine, Transmission, and Axle Combinations

MODELS	ENGINES	AUTOMATIC TRANSMISSIONS				FULLY SYNCHRONIZED MANUAL TRANSMISSIONS				
		Heavy-Duty Turbo Hydra-matic 400 (M41)	Turbo Hydra-matic 400 (M40)	Turbo Hydra-matic (M38)	Jetaway (M31)	4-Speed Floor-Shift Wide-Ratio (M20)	4-Speed Floor-Shift Close-Ratio (M21)c	Heavy-Duty 3-Speed Floor-Shift (M14)	3-Speed Column-Shift (Std. V-8)	3-Speed Column-Shift (Std. L-6)
		AVAILABLE AXLES FOR ABOVE TRANSMISSIONS								
TORONADO	400-HP Rocket 455 V-8 H.C. (W34)		3.07a	<p><b>AXLE OPTION NUMBERS:</b> 2.56:1 (G96), 2.78:1 (G95), 2.93:1 (G94), 3.08:1 (G90), 3.23:1 (G91), 3.42:1 (G92), 3.91:1 (G88), 4.33:1 (G89, or Dealer-Installed Accessory), 4.66:1 (Dealer-Installed Accessory), Anti-Spin Rear Axle (G80); available with any ratio.</p> <p><b>NOTE:</b> G88—3.91 Performance Axle will be 3.73 ratio if Canadian built. G90—3.08 Axle will be 3.07 ratio if Canadian built. G91—3.23 Axle will be 3.31 ratio if Canadian built. G92—3.42 Performance Axle will be 3.55 ratio if Canadian built. G95—2.78 Axle will be 2.73 ratio if Canadian built.</p> <p><b>SYMBOLS:</b> a—Standard. b—Standard with Air Conditioner (C60, C61) or Heavy-Duty Engine-Cooling Equipment (Y72). c—Not available with C60, C61, or Y72. d—Heavy-Duty Performance Rear Axle with heavy-duty shafts and differential gears, G80 required. Not available with C60, C61, or Y72. e—Dealer-Installed Accessory. Includes high-ratio drive gears for G88, G89, or G92. Not recommended for city or highway use. Not available with C60, C61, or Y72.</p>						
	375-HP Rocket 455 V-8 H.C. (Std.)									
NINETY-EIGHT	365-HP Rocket 455 V-8 H.C. (Std.)		2.56a, 2.93							
	390-HP Rocket 455 V-8 H.C. (L32)	2.93a								
DELTA 88 ROYALE, DELTA 88 CUSTOM, DELTA 88	365-HP Rocket 455 V-8 H.C. (L31)		2.56a, 2.93							
	310-HP Rocket 455 V-8 (Std. except Delta 88)							2.93a		
	250-HP Rocket 350 V-8 (Std., Delta 88)		2.78ab, 3.08, 3.23		2.78a, 3.08b, 3.23				3.23a	
VISTA-CRUISER	325-HP Rocket 400 V-8 H.C. (L31)		2.78a, 3.08							
	310-HP Rocket 350 V-8 H.C. (L74)		2.78, 3.08a, 3.23							
	250-HP Rocket 350 V-8 (Std.)		2.78a, 3.08, 3.23			3.23a		3.23a		
4-4-2	360-HP (Force-Air) Rocket 400 V-8 H.C. (W30)		3.42acd, 3.91cd, 4.33cde, 4.66e				3.42cd, 3.91cd, 4.33acde, 4.66e			
	350-HP Rocket 400 V-8 H.C. (Std. w/Man. Trans.)					3.08, 3.23b, 3.42acd, 4.33e, 4.66e	3.42c, 3.91ac	3.08, 3.23a, 3.42cd, 3.91cd, 4.33e, 4.66e		
	325-HP Rocket 400 V-8 H.C. (Std. w/Auto. Trans.)		2.56, 2.78, 3.08a, 3.23, 3.42cd, 3.91cd, 4.33e, 4.66e							
CUTLASS SUPREME	310-HP Rocket 350 V-8 H.C. (Std.)			2.56a, 2.78, 3.08, 3.23, 3.42cd, 3.91cd, 4.33e, 4.66e		3.08a, 3.23, 3.42cd, 4.33e, 4.66e	3.42ad, 3.91cd, 4.33e, 4.66e	2.78, 3.08a, 3.23, 3.42cd, 3.91cd, 4.33e, 4.66e		
	250-HP Rocket 350 V-8 (L65)									
CUTLASS S, CUTLASS, F-85	325-HP (Force-Air) Rocket 350 V-8 H.C. (W31, Cutlass S, F-85)					3.42cd, 3.91acd, 4.33cde, 4.66e	3.42cd, 3.91cd, 4.33acde, 4.66e	3.42cd, 3.91acd, 4.33cde, 4.66e		
	310-HP Rocket 350 V-8 H.C. (L74)			2.56, 2.78a, 3.08, 3.23, 3.42cd, 3.91cd, 4.33e, 4.66e						
	250-HP Rocket 350 V-8 (Std. V-8 except F-85)			2.56a, 2.78, 3.08, 3.23, 3.42cd, 3.91cd, 4.33e, 4.66e	2.56, 2.78a, 3.08, 3.23, 3.42cd, 3.91cd, 4.33e, 4.66e	3.08a, 3.23, 3.42cd, 4.33e, 4.66e	3.42acd, 3.91cd, 4.33e, 4.66e	2.78, 3.08a, 3.23, 3.42cd, 3.91cd, 4.33e, 4.66e		
	250-HP Rocket 350 V-8 (Std. V-8, F-85)				2.56a, 2.78b, 3.08, 3.23, 3.42cd, 3.91cd, 4.33e, 4.66e					
	155-HP Action-Line 6 (Std. L-6)				2.78ac, 3.08b, 3.23					2.78ac, 3.08b, 3.23

# SPECIFICATIONS . . Engines, Tires, Dimensions

ENGINES	400-HP Rocket 455 V-8 H.C.	390-HP Rocket 455 V-8 H.C.	375-HP Rocket 455 V-8 H.C.	365-HP Rocket 455 V-8 H.C.	310-HP Rocket 455 V-8 (Reg.-Fuel)	360-HP Rocket 400 V-8 H.C. (Force-Air)	350-HP Rocket 400 V-8 H.C.	325-HP Rocket 400 V-8 H.C.	325-HP Rocket 350 V-8 H.C.. (Force-Air)	310-HP Rocket 350 V-8 H.C.	250-HP Rocket 350 V-8 (Reg.-Fuel)	155-HP Action- Line 6 (Reg.-Fuel)
Max. horsepower at rpm	400 at 4800	390 at 5000	375 at 4800	365 at 4800	310 at 4200	360 at 5400	350 at 4800	325 at 4500	325 at 5400	310 at 4800	250 at 4400	155 at 4200
Max. torque at rpm (lb.-ft.)	500 at 3200	500 at 3200	510 at 3000	510 at 3000	490 at 2400	440 at 2600	440 at 3200	440 at 3000	360 at 3600	390 at 3200	355 at 2600	240 at 2000
Displacement (cu. in.)	455					400			350			250
Bore and stroke (in.)	4.125 x 4.250					3.870 x 4.250			4.057 x 3.385			3.875 x 3.530
Compression ratio	10.25-to-1				9.00-to-1	10.50-to-1			10.50-to-1	10.25-to-1	9.00-to-1	8.50-to-1
Carburetor barrels (no.)	4				2	4			4			1
Exhaust system (type)	Dual Outlets	Dual	Single			Dual*			Dual	Single	Single	
Fuel recommended (type)	Premium				Regular	Premium			Premium			Regular
Fuel-tank capacity (gals.)	24.0	25.0	24.0	25.0		20.0 (23.0 Vista-Cruiser)			20.0 (23.0 Wagons, 25.0 Delta 88)			20.0 (23.0 Wagons)
Crankcase oil capacity (qt.)	5 (5, with filter)	4 (5, with filter)	5 (6, with filter)	4 (5, with filter)		4 (5, with filter)			4 (5, with filter)			4 (5, with filter)
Cooling system capacity (qt.)	18.0	17.5	18.0	17.5		16.2			15.2			12.2

## Availability

Toronado	W34	—	Std.	—	—	—	—	—	—	—	—	—
Ninety-Eight	—	—	—	Std.	—	—	—	—	—	—	—	—
Delta 88 Royale	—	L32	—	L31	Std.	—	—	—	—	—	—	—
Delta 88 Custom	—	L32	—	L31	Std.	—	—	—	—	—	—	—
Delta 88	—	L32	—	L31	L30	—	—	—	—	—	Std.	—
Vista-Cruiser	—	—	—	—	—	—	L31 (w/auto. trans.)	—	—	L74	Std.	—
4-4-2	—	—	—	—	—	W30	Std. (w/man. trans.)	Std. (w/auto. trans.)	—	—	—	—
Cutlass Supreme	—	—	—	—	—	—	—	—	—	Std.	L55 (less cost)	—
Cutlass S	—	—	—	—	—	—	—	—	W31	L74	Std. V-8	Std. L-6
Cutlass Sedans and Wagons	—	—	—	—	—	—	—	—	—	L74	Std. V-8	Std. L-6
F-85	—	—	—	—	—	—	—	—	W31	L74	Std. V-8	Std. L-6

\*Single exhaust system in Vista-Cruiser with 325-hp engine.

TIRES	Toronado	Ninety-Eight	Delta 88 Royale, Delta 88 Custom, Delta 88	Vista-Cruiser		4-4-2	Cutlass S, F-85	Cutlass Supreme	Cutlass	
				3-Seat— Either Tailgate	2-Seat—Drop-or- Swing Tailgate	2-Seat—Std. Tailgate			Sedans	Station Wagon
Blackwall (Std.)	8.85 x 15" T-FD	8.85 x 15"	8.55 x 15"	8.55 x 14"		8.25 x 14"	—	7.75 x 14"	7.75 x 14"	8.25 x 14"
Blackwall Polyester-Cord (PL5)	—	—	—	—		—	F70 x 14"	F70 x 14"	—	—
Rad-Stripe Wide-Oval (N81)	—	—	—	—		—	F70 x 14" (Std.)	F70 x 14"	—	—
Rad-Stripe Fiberglass-Belted (P81)	—	—	—	—		—	F70 x 14"	F70 x 14"	—	—
Whitewall, Wide-Oval for 4-4-2 (P26)	8.85 x 15" T-FD	8.85 x 15"	8.55 x 15"	8.55 x 14"		8.25 x 14"	F70 x 14"	7.75 x 14"	7.75 x 14"	8.25 x 14"
Whitewall Fiberglass-Belted (P80)	J77 x 15"	J77 x 15"	H78 x 15"	H78 x 14"		G78 x 14"	—	F78 x 14"	F78 x 14"	F78 x 14"
Whitewall Custom Polyester-Cord (PQ9)	8.85 x 15"	8.85 x 15"	8.55 x 15"	8.55 x 14"		8.25 x 14"	—	7.75 x 14"	7.75 x 14"	8.25 x 14"

\*Force-Air Induction System (W31) required for F-85.

DIMENSIONS	Toronado	Ninety-Eight	Delta 88 Royale	Delta 88 Custom	Delta 88	Vista- Cruiser	4-4-2	Cutlass S	F-85	Cutlass Supreme Sedans	Cutlass Sedans	Station Wagon
Overall Size												
Length (in.)	214.8	224.4	—	218.6	—	217.8	—	201.9	—	—	216.4	212.6
Width (in.)	78.8	80.0	—	79.9	—	77.2	—	76.2	—	—	76.8	77.2
Loaded height (in.)*	52.8	54.8	—	54.7	—	58.5	—	50.8	—	—	53.5	55.2
Shipping weight (lb.)**	4292	4168	4066	3978	3881	3920	3317	3320	3266	3354	3394	3729
Curb weight (lb.)*	4478	4358	4197	4168	4070	4101	3675	3465	3423	3509	3459	3900
Chassis												
Wheelbase (in.)	119.0	127.0	—	124.0	—	123.0	—	122.0	—	—	119.0	—
Tread, front/rear (in.)	63.5/63.0	62.6/63.0	—	62.5/63.0	—	59.0/59.0	—	59.0/59.0	—	—	59.0/59.0	—
Brake diameter (in.)	11.0	11.0	—	11.0	—	9.5	—	9.5	—	—	9.5	—
Brake lining area (sq. in.)	212.0	229.7	—	208.6	—	173.6	—	156.3	—	—	156.3	—
Turning diameter (ft.)	42.9	46.9	—	45.4	—	42.7	—	40.0	—	—	41.2	—
Interior Room												
Headroom, front/rear (in.)*	37.7/36.0	38.5/37.8	—	39.0/37.7	—	38.4/40.3	—	38.2/36.3	—	38.2/36.4	—	38.3/38.3
Legroom, front/rear (in.)*	41.3/35.3	41.7/37.1	—	42.5/35.1	—	42.8/38.0	—	41.5/34.1	—	41.5/32.5	—	42.8/35.0
Shoulderroom, front/rear (in.)*	58.8/57.8	60.3/56.7	—	62.4/61.0	—	58.3/57.5	—	58.3/57.1	—	58.3/57.0	—	58.3/57.4
Kiproom, front/rear (in.)*	62.2/55.5	63.6/55.2	—	63.6/55.5	—	59.4/59.2	—	59.7/53.0	—	59.5/58.3	—	59.8/59.5
Trunk capacity (cu. ft.)	14.6	20.5	—	19.5	—	—	—	17.0	—	17.0	—	—
Active floor cargo capacity (cu. ft.)	—	—	—	—	—	100.5	—	—	—	—	—	85.1
Total cargo capacity (cu. ft.)	—	—	—	—	—	108.5	—	—	—	—	—	96.1

V-8 hardtop coupes, except 2-Seat Vista-Cruiser, Cutlass Supreme Town Sedan, Cutlass V-8 Town Sedan and Station Wagon, F-85 V-8 Sports Coupe.



## STANDARD FEATURES . . . of All Models

### BODY FEATURES

- Corrosion-Resistant Body by Fisher
- Thermoplastic Front-Fender Inner Panels (except Toronado)
- Magic-Mirror Finish
- Sound-Deadening Body Insulation
- Comfortably Cushioned Seats and Front-Door Armrests
- Ashtray and Cigar Lighter
- Tri-Nickel-Plated Bumpers
- Twin Grilles
- Recessed Windshield Wipers (except F-85)
- Chrome Windshield Molding
- Chrome Rear Window Molding (except Convertibles)
- Dual Sealed-Beam Headlamps
- Curved-Glass Side Windows
- Counterbalanced Hood
- Full Fiberglass Hood Insulation (except F-85)
- Dual-Paneled Hood, Doors, Trunk Lid or Tailgate
- Two-Key Car Locking System
- Keyless Door Locking

- Two-Stage Front-Door Checks
- Seamless Deep-Pile Carpeting (except F-85)
- Air-Mix Heater and Defroster
- Automatic Front-Door Lamp Switches
- Key-Locked Glove Compartment

### POWER TRAIN FEATURES

- Overhead-Valve Rocket V-8 or Action-Line 6
- Engine Combustion Control System
- Hydraulic Valve Lifters
- Aluminized Exhaust System
- Fuel-Air Supply System with Factory-Tailored Carburetor, Wet-Element Air Cleaner, Dual Fuel Filters, Air-Cooled Fuel Line
- Full-Pressure Lubrication with Full-Flow Oil Filter and Positive Crankcase Ventilation
- Pressurized-Liquid Cooling with Cross-Flow Radiator and Fan Shroud
- All-Weather Electrical System with High-Torque Starter, Hot-Tip Spark Plugs, Delcotron, Delco-Eye Energizer Battery
- Fully Synchronized, 3-Speed Manual Transmission (Turbo Hydra-matic 400 in

- Toronado and Ninety-Eight)
- Olds-Built Hypoid Rear Axle with Precision-Balanced Drive Shaft (except Toronado)

### CHASSIS FEATURES

- Torque-Beam Frame
- Vibra-Tuned Rubber Body Mountings
- Full Rubber Suspension Insulation
- Pivot-Poise Ball-Joint Front Suspension with Stabilizer Bar
- Twin-Triangle Rear Suspension (except Toronado)
- Deep-Coil Springs at All Wheels (except Toronado)
- Direct-Acting Shock Absorbers
- Self-Adjusting Brakes—plus Pedal-Ease Power Brakes in Toronado and Ninety-Eight
- Foot-Operated Parking Brake
- Low-Friction Steering System—plus Vari-Ratio Power Steering in Toronado and Ninety-Eight
- Low-Profile Tubeless Tires
- Precision-Balanced Wheels and Tires

## SAFETY FEATURES . . . of All Models

- Energy-Absorbing Steering Column
- Seat Belts with Pushbutton Buckles for All Passenger Positions
- Shoulder Belts with Pushbutton Buckles and Special Storage Convenience Provision for Driver and Right Front Passenger (except Convertibles)
- Passenger-Guard Door Locks with Forward-Mounted Lock Buttons (All Doors)
- Four-Way Hazard Warning Flasher
- Dual Master Cylinder Brake System with Warning Light and Corrosion-Resistant Brake Lines
- Folding-Seat-Back Latches
- Dual-Speed Windshield Wipers and Washers
- Dual-Action Safety Hood Latches
- Outside Rearview Mirror

- Backup Lights
- Side Marker Lights and Parking Lights that Illuminate with Headlamps
- Energy-Absorbing Instrument Panel
- Padded Sun Visors
- Reduced-Glare Instrument-Panel Top, Inside Windshield Moldings, Horn Buttons, Steering Wheel Hub, and Windshield Wiper Arms and Blades
- Wide Inside Day-Night Mirror with Deflecting Base
- Lane Change Feature in Direction-Signal Control
- Safety Armrests
- Thick Laminate Windshield
- Soft, Low-Profile Window Control Knobs, Coat Hooks, Dome Lamp
- Padded Front- and Intermediate-Seat Back Tops
- Smooth-Contoured Door and Window

- Regulator Handles
- Anti-Theft Ignition Key Warning Buzzer
- Anti-Theft Ignition, Steering, and Transmission Lock
- Tire Safety Rims
- Safety Door Latches and Hinges
- Starter Safety Switch on All Transmissions
- Uniform Shift Quadrant (PRNDL or PRNDLS) for Automatic Transmission
- Snag-Resistant Steering Wheel Hardware
- Stamped-Steel Door Hinges (at least one assembly per door)
- Non-Projecting Wheel Nuts, Discs, and Caps
- Improved Fuel-Tank Retention
- Improved Glove Box Door Latch
- Headlamp Aiming Access Provision

# MODEL PRICES . . . Delta 88, Delta 88 Custom, Delta 88 Royale, Ninety-Eight, Toronado

MODEL	MODEL CODE	MSRP a	DEST. CHG.b	TOTAL	LOCAL PRICE	MODEL	MODEL CODE	MSRP a	DEST. CHG.b	TOTAL	LOCAL PRICE
DELTA 88						DELTA 88 ROYALE					
Town Sedan	5469	\$3205		<del>3268.50</del>	3286.50	Holiday Coupe	6647	\$3819		<del>3828.50</del>	3900.25
Holiday Coupe	5437	\$3260		<del>3323.50</del>	3341.50	NINETY-EIGHT					
Holiday Sedan	5439	\$3336		<del>3347.50</del>	3417.50						
Convertible	5467	\$3573		<del>3630.50</del>	3684.50						
DELTA 88 CUSTOM						Town Sedan	8469	\$4238		<del>4304.50</del>	4323.50
Town Sedan	6469	\$3415		<del>3478.50</del>	3496.50	Holiday Coupe	8457	\$4444		<del>4510.50</del>	4529.50
Holiday Coupe	6437	\$3508		<del>3571.50</del>	3589.50	Holiday Sedan	8439	\$4506		<del>4572.50</del>	4591.50
Holiday Sedan	6439	\$3583		<del>3646.50</del>	3664.50	Convertible	8467	\$4702		<del>4768.50</del>	4787.50
						Luxury Sedan	8669	\$4581		<del>4647.50</del>	4666.50
						Luxury Sedan Hardtop	8639	\$4675		<del>4741.50</del>	4760.25
						TORONADO					
							9487	\$4818		<del>4824.50</del>	4903.25

a. Manufacturer's Suggested Retail Price. Includes reimbursement for Federal Excise Tax and Suggested Dealer New Vehicle Preparation Charge.

b. Destination Charge. \$ 2.35 higher on models equipped with an Air Conditioner (C60 or C61).





## **MODEL PRICES...**

**Delta 88**

**Delta 88 Custom**

**Delta 88 Royale**

**Ninety-Eight**

**Toronado**

## REVISIONS SINCE SEPTEMBER 1968 ISSUE

- Addition of prices for all models and options.
- Addition of Option A82, Dual Front-Seat Head Restraints, as a mandatory option for all models instead of standard equipment, until January 1, 1969.
- Addition of Option N33, Tilt-Away Steering Wheel, for all 88, Ninety-Eight, and Tornado models. Available approximately October 15, 1968.
- Addition of Option N81, Special Tire Package, for F-85 model with W31.
- Addition of Option P81, F70x14" Fiberglass-Belted Red-Stripe Tires, for F-85 model with W31.
- Addition of Option PL5, F70x14" Blackwall Wide-Oval Polyester-Cord Tires with Raised White Letters, for F-85 model with W31.
- Discontinuance of Option W31, Force-Air Engine Induction System, for Cutlass Supreme Holiday Coupe.
- Inclusion of Interior Component Colors in Colors chart.
- Miscellaneous modification and amplification of information.

Oldsmobile Division, Lansing, Mich.



MARK OF EXCELLENCE

## Salesmen's Prices/Equipment Colors and Trims/Specifications

Oldsmobile reserves the right to make changes at any time, without notice, in prices, colors, materials, trim, equipment, specifications and models, and also to discontinue models.

Litho in U.S.A.

October, 1968