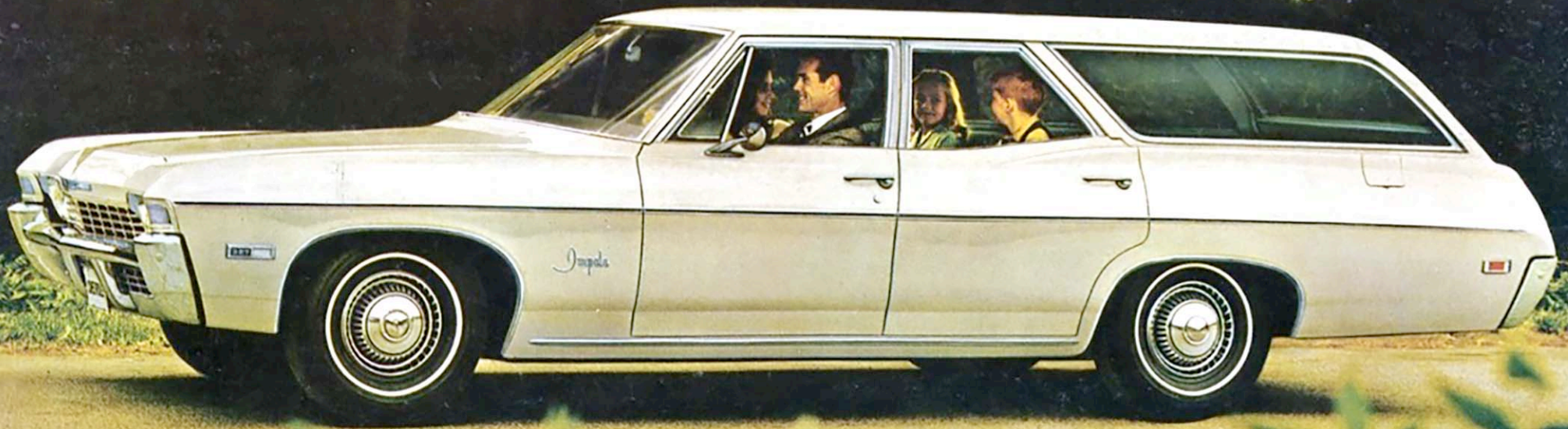
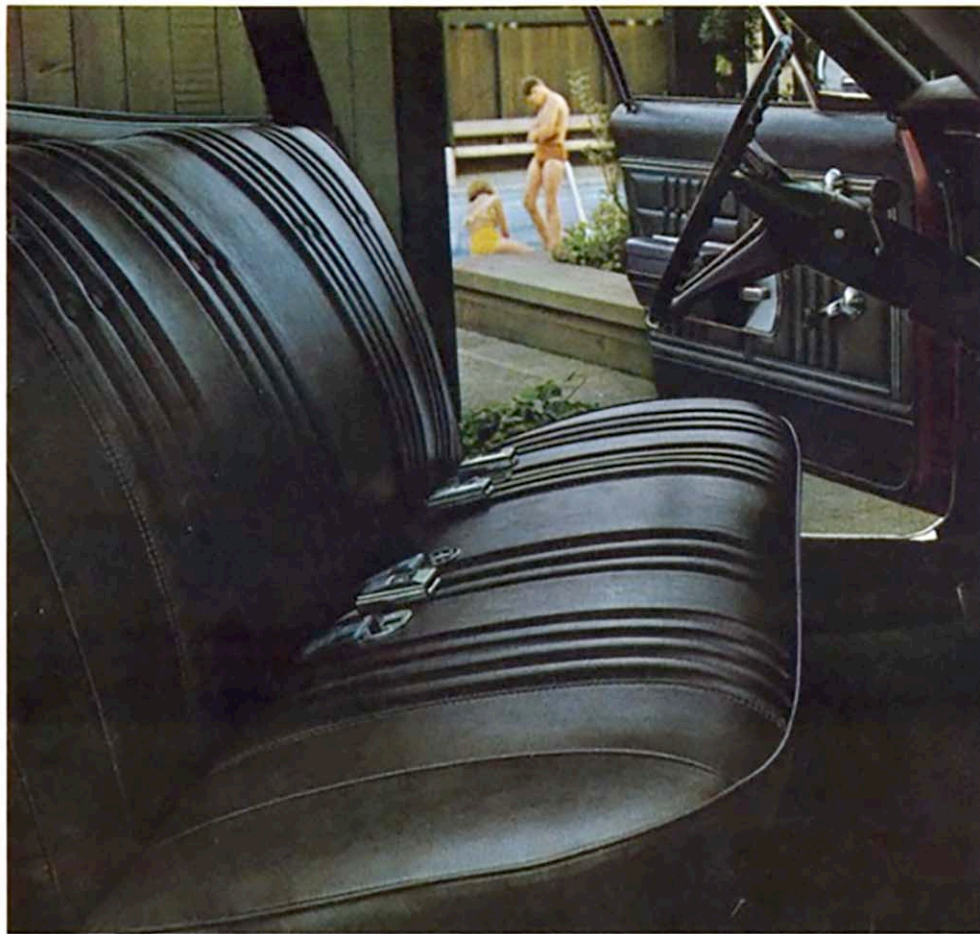


1968 CHEVROLET WAGONS

for people who want big room





Impala wagon interior.



Standard side marker lights glow amber in front and red in back.



Concealed storage well beneath rear compartment load floor.

Suburban dwellers want big room with luxury. They go for

CHEVROLET IMPALA WAGONS

Looking for a luxury wagon roomy enough to take on a little league crowd? Take hold of a spacious new 2- or 3-seat Impala wagon for '68. You're in! cavernous Impala wagon interiors are walled with easy-to-clean vinyl. New thick-tufted vinyl-upholstered seats are soft as they are wide. When the cargo isn't youngsters (or adults), seats flip down in a flash to swallow up to 106.1 cubic feet of anything you care to cart.

But don't get the idea your keys are safe from the junior prom member of the family. That smartly crafted instrument panel only hints at new Impala beauty. Like fresh front-end styling, new front and rear side marker lights and new upswept hood with Hide-A-Way windshield wipers. Want extras? Stereo tape system and Comfortron air conditioning are only the first chapter. You can order new Astro Ventilation which permits high and low air streams to enter car without windows being opened.

The Impala driving mood is one of quiet power. Chalk it up to a refined soft-cushioned ride plus a larger standard 200-hp Turbo-Fire 307 V8 engine and fully synchronized 3-Speed transmission. If greater performance is your order, you can select from four larger V8s and four additional transmissions.

Sample the standard luxuries in Impala

- Tufted-vinyl vertical pleating on seats and seat sidewalls in four colors (black, blue, saddle and turquoise).
- Dramatic new front-end styling.
- New Hide-A-Way 2-speed windshield wipers and new articulating left blade combine to clean larger area.
- Big 28.8" x 52.4" tailgate opening.
- Convenient built-in bumper steps in 3-seat model for easy entering and exiting by third-seat passengers.
- Easy, convenient seat conversion.
- Oval steering wheel with horn tabs.
- Wheel opening moldings.
- Ignition alarm (activated when driver's door is opened) that signals when ignition key has been left in "on" or "accessory" position.
- Triple taillight clusters.
- Rubber-cushioned engine, transmission and body mounts for quiet ride.
- Attractive padded insert of black vinyl in protective body side molding.

A few of the many extra-cost Options and Custom Features for 1968 Chevrolet and Chevelle wagons are described or illustrated throughout this catalog. You will find a more complete list on pages 14 and 15.

Shown on front cover: Impala 2-Seat Station Wagon

Copyright 1968
Chevrolet Motor Division,
General Motors Corporation.



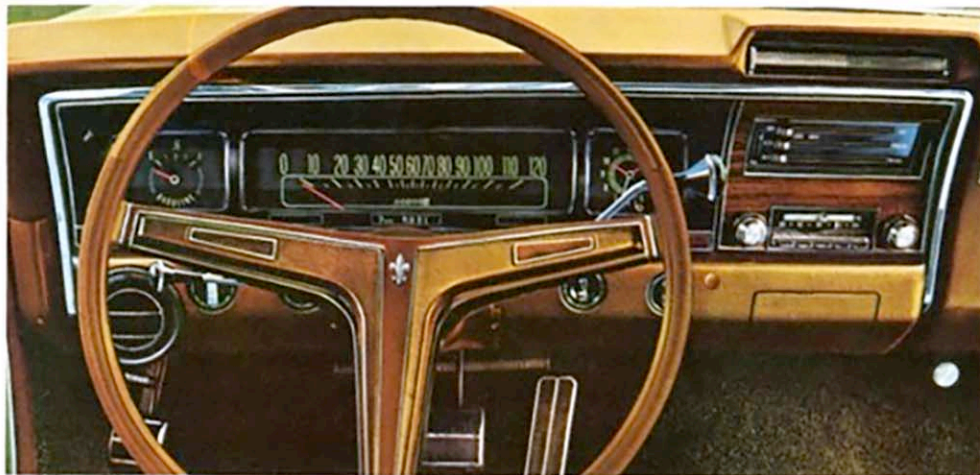
Impala 2-Seat Wagon.



Impala 3-Seat Wagon has roomy, adult-sized third seat that faces rear for easy entering and exiting.



Impala 3-Seat Wagon.



Caprice Estate Wagons' new instrument panel with the warm look of walnut.



Caprice Estate Wagon interior.

Resort-goers seek out the big room and elegance of **CHEVROLET CAPRICE ESTATE WAGONS**

"Getting there is half the fun!" Especially so in Chevrolet's luxurious '68 Caprice Estate Wagon. Extra-thick foam cushioned seats on both 2- and 3-seat models let you enjoy the wide open spaces—between passengers! Plush tufted-vinyl pleating on seats and sidewalls; deep-twist carpeting on floors and door scuff areas; a newly fashioned instrument panel with walnut-look inlays . . . all tell you this one is for folks who like to go places in style.

To let others know you're coming, exterior elegance includes the look of two contrasting wood grains on side and rear panels, captivating new deluxe wheel covers and new concealed headlights you can order. Caprice has Hide-A-Way windshield wipers, too. When not in use, they duck down behind an upswept hood to complement the clean classic look of new front-end styling.

Add to your comfort by ordering new Astro Ventilation. It provides a quiet flow of outside air through special adjustable vent-ports positioned in the instrument panel. Stay on the move with the standard V8, or specify one of several larger engines including the big 385-hp Turbo-Jet 427 V8. Then combine it with Turbo Hydra-Matic transmission for versatile manual or automatic shifting.

In back, your luggage rests on thick carpeting you can order for the rear load floor. Now, lower the power-operated tailgate window (standard in 3-seater). Then drop the counterbalanced tailgate itself for some truly convenient unloading. Caprice Estate Wagon . . . you've really arrived!

All these—and many more—are standard in Caprice

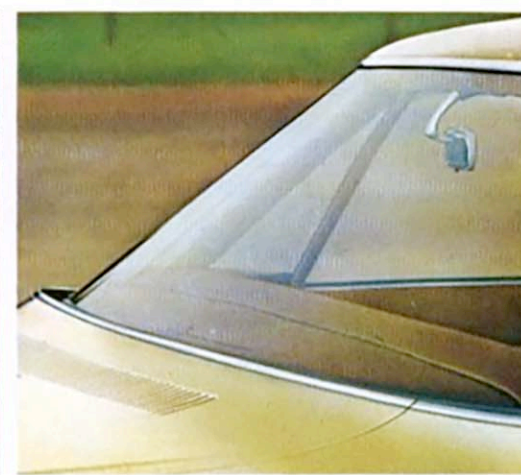
- Attractive front and rear side marker lights for added safety (amber in front, red in back).
- Hide-A-Way windshield wipers.
- Automatic light switches at all four doors plus instrument panel courtesy lights and courtesy light for third-seat passengers in 3-seat model.
- Special sound insulation in strategic places for an extra quiet ride.
- Electric clock.
- Beautiful side and rear panels now with the rich, warm look of two contrasting wood grains.
- Bright foot pedal trim.
- Distinctive front fender lights.
- Up to 106.1-cu.-ft. cargo capacity.
- Four all-vinyl interior colors.
- Concealed rear stowage compartment.



Caprice Estate Wagons' stylish concealed headlights you can order.



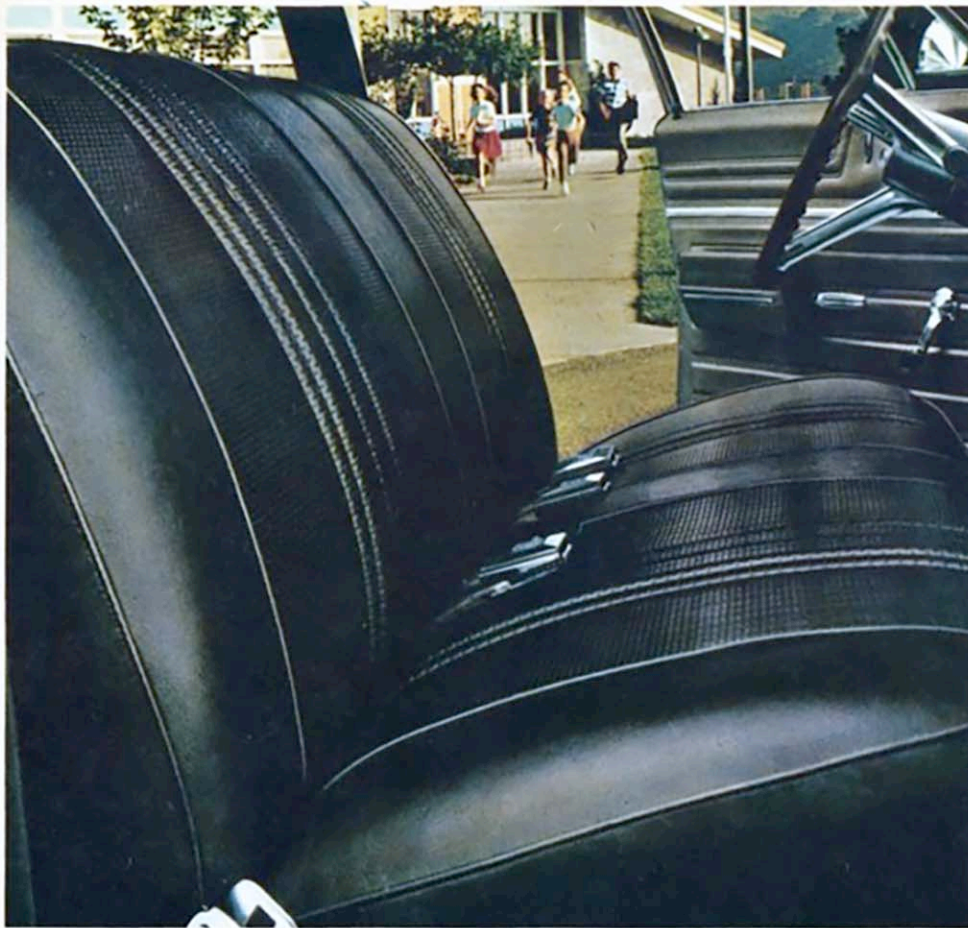
Like all '68 Chevrolet-built wagons, Caprice features easy, convenient side loading of rear cargo area.



Upswept hood and Hide-A-Way windshield wipers, standard in all full-size Chevrolet wagons.



Caprice 2-Seat Estate Wagon.



Bel Air wagon interior.



Easy-load counterbalanced tailgate drops barely two feet above ground.



Biscayne wagon interior.

On-the-move families like the big size and value of **CHEVROLET BEL AIR WAGONS**

A happy medium of versatility and moderate price. That's the story of good-looking Bel Air wagons for '68—both 2-seat and 3-seat models. Look over the fresh Bel Air styling. Sample the comfort of durable all-vinyl interiors and wide foam cushioned seats (able to upstage most easy chairs). Big on camping? Fold rear seats down to sleep a pair of 8 footers . . . tuck valuable gear away in stowage well under the floor.

There's plenty of power for hill and dale in the standard 155-hp Turbo-Thrift 250 Six or 200-hp Turbo-Fire 307 V8 and fully synchronized 3-Speed transmission. Need more? Specify a new Turbo-Fire 327 V8 (250-hp on regular-grade gas) and power for brakes, steering and windows. Then order extra comforts like front seat head restraints, Soft-Ray tinted glass and rear window air deflector. You've just served up convincing proof of Bel Air wagon versatility for 1968.

Here are just a few of many Bel Air standard features

- Choice of four all-vinyl interior colors keyed to 15 exterior Magic-Mirror finishes (12 of them new for '68).
- Automatic ignition key alarm.
- Lighted locking glove compartment.
- Body by Fisher quality.
- Seat belts at all passenger positions.
- Full Coil suspension and double-acting shock absorbers.

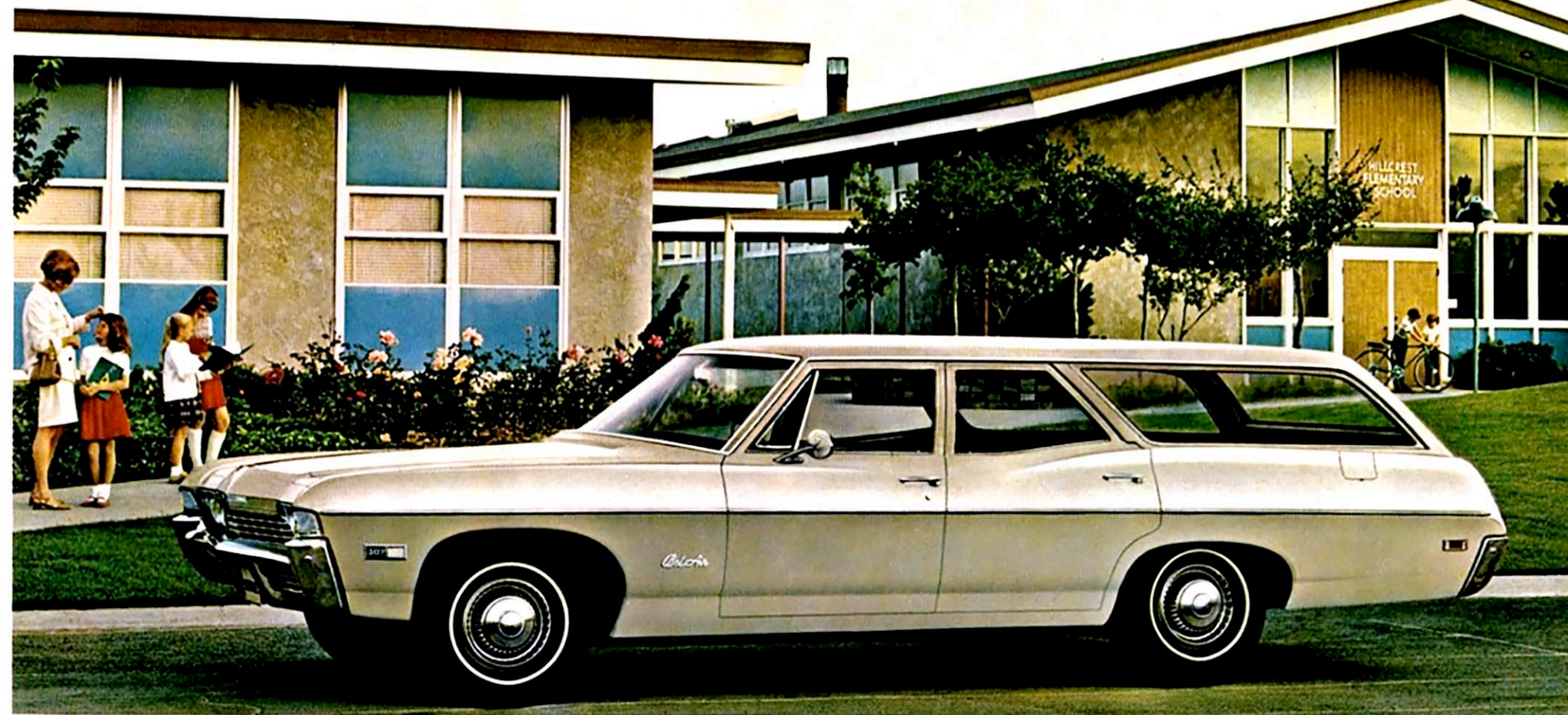
People with big ideas on space and savings take to the

CHEVROLET BISCAYNE WAGON

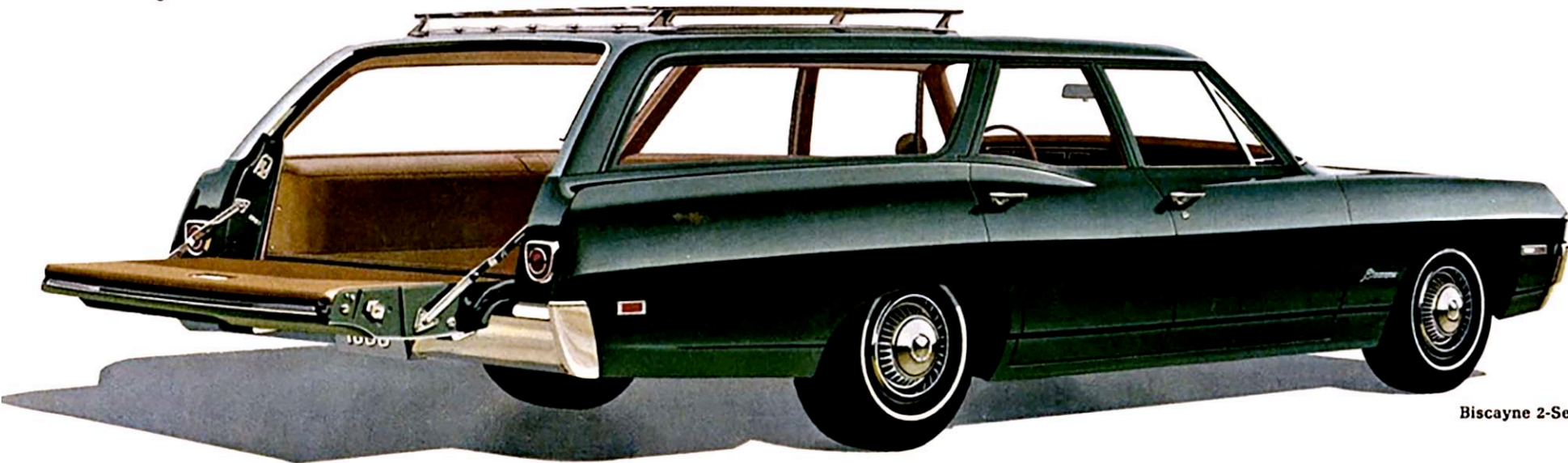
Just because your wallet stays calm when you give the stylish new '68 Biscayne 2-Seat Wagon a nod, don't figure you're taking a cut in value. It has Chevrolet big-wagon benefits like hidden stowage well, tough vinyl interior and counter-balanced tailgate that yawns open on a bandshell-big rear compartment (106.1 cu. ft. with rear seat folded down). Biscayne comes ready for rough-house loads, and you can also order the convenience of Automatic Level Control with Superlift air-adjustable rear shock absorbers. Specify extra comforts like AM/FM radio and power for brakes and steering. Biscayne for 1968 . . . a better-than-ever practical station wagon buy.

A variety of Biscayne standard features include:

- Color-keyed floor carpeting.
- Deep-padded armrests on all doors that shield newly styled door handles.
- Cigarette lighter.
- Beautiful new Chevrolet grille styling.
- 24-gallon fuel tank.
- Blended-air heater and defroster.
- Hide-A-Way windshield wipers.
- Wide-stance chassis design.
- Front seat shoulder belts and rear shoulder belt anchors.
- A host of safety features (page 12).



Bel Air 2-Seat Wagon.



Biscayne 2-Seat Wagon.



Malibu wagon interior.



Concoors Estate Wagon interior.

Those who lead an outdoor life like the indoor room of

CHEVELLE MALIBU WAGONS

Once around the local campgrounds in a 1968 Malibu 2- or 3-Seat Wagon and you may never want to put it away on weekends. Could be the ride-refined rubber-cushioned body mounting system and refined rear suspension. Or size: new chassis and longer 116" wheelbase make Malibu's rear compartment even more spacious.

Chances are it's the mental picture of your family in Malibu's roomier all-vinyl interiors. Extra camping cargo tucks away in a concealed stowage compartment. And the likes of a St. Bernard can lounge on nearly 28 sq. ft. of vinyl-covered load floor. Stick with the standard power teams of 140-hp Turbo-Thrift 230 Six or new 200-hp 307-cu.-in. V8 engine and fully synchronized 3-Speed transmission. Other V8 power includes a new 250-hp Turbo-Fire 327 that runs on regular-grade gas.

Malibu has many standard features like these

- Bumper-mounted backup lights and newly styled taillights.
- Front side marker lights and wrap-around taillights for added safety.
- Deep-twist color-keyed carpeting.
- Lighted heater controls.
- Hide-A-Way 2-speed wipers with articulating left blade.
- Increased tread for wide-stance stability and better handling.

About-towners vote for the spacious luxury of CHEVELLE CONCOURS ESTATE WAGONS

Meet '68's most likely candidate for "Wagon of the Year" honors, Chevelle's luxurious new Concoors Estate Wagon in 2- and 3-seat models. The proof: exquisite new body styling set off by Hide-A-Way windshield wipers, walnut-look exterior paneling and bright chrome around the wheel openings. Inside, plush embossed-vinyl seats and sidewalls, new cluster-styled instrument panel, smart oval steering wheel and horn tabs await your approval. Posher still are comforts you can order: stereo tape system, Four-Season air conditioning and Comfortilt steering.

But don't forget, Concoors is all wagon—with all the additional room this year's 116" wheelbase affords. Like wider seats, more knee room and larger vinyl-covered rear compartment. Standard on the 3-seat model is a power-operated tailgate window that's controlled from two convenient locations.

These are among the many Concoors standard features

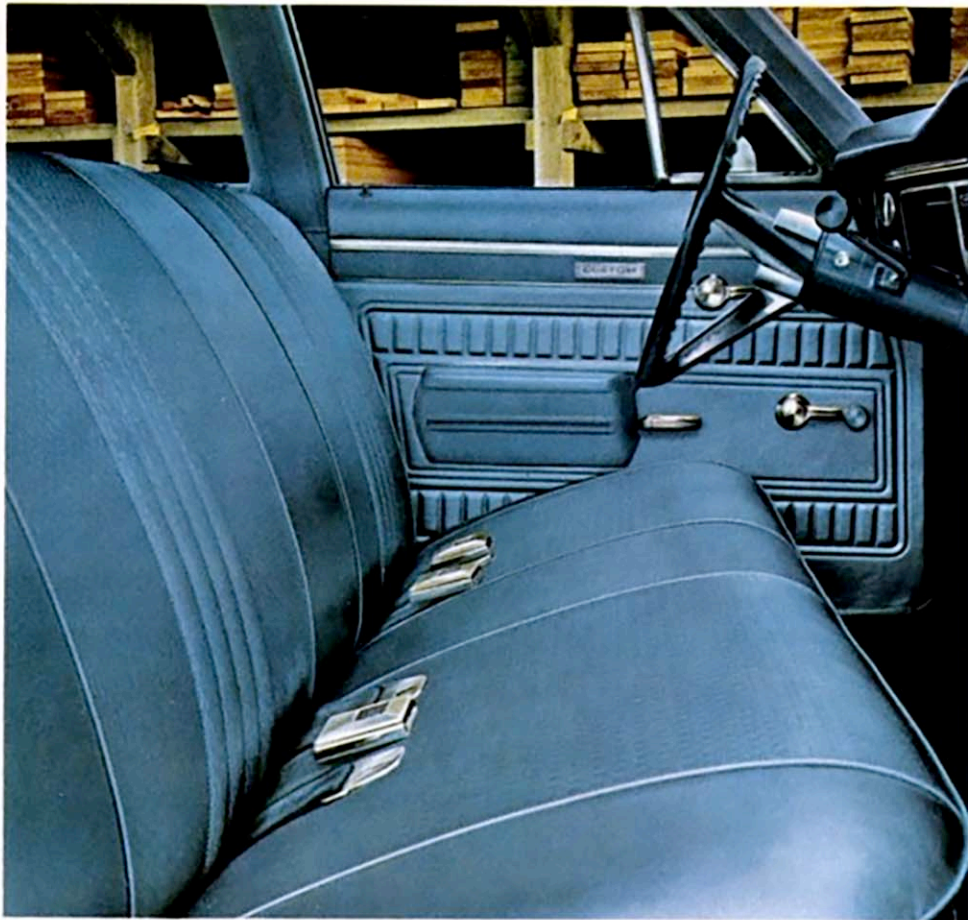
- Four all-vinyl interior colors keyed to 15 exterior Magic-Mirror finishes.
- Lighted locking glove box.
- Extra-thick foam cushioned seats.
- Up to 94 cubic feet of total cargo space and a concealed stowage well.
- Courtesy light for third-seat passengers on 3-seat model.



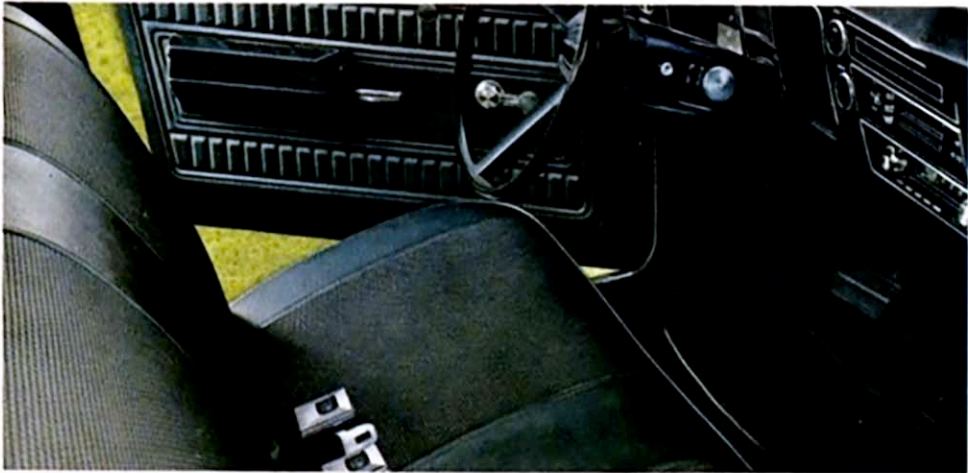
Malibu 3-Seat Wagon



Concoors 2-Seat Estate Wagon.



Nomad Custom wagon interior.



Nomad wagon interior.

Do-it-yourselfers like the big new brawn of CHEVELLE NOMAD CUSTOM WAGONS

Want a wagon built to take a beating at a price that won't bruise your budget? Look into Chevelle's new Nomad Custom 2- and 3-seat models for '68. For openers, there's a rattle-resistant tailgate that closes on 94 cu. ft. of cargo space. Underneath, an all-new chassis built like a bank vault sits on a new soft cushioned body mounting system. Try the quick-size handling of Chevelle's wider stance and improved rear suspension. Take on big jobs with the larger standard 200-hp V8 engine. Pulling a trailer? Order one of three bigger V8s and Superlift air-adjustable rear shock absorbers.

Check out some of Nomad Custom standard features

- Smartly styled Body by Fisher of extra-rugged Unisteel design.
- All-vinyl interiors in three colors.
- Concealed stowage compartment.
- Rubber-cushioned body mounts.
- Full Coil suspension.
- New crank-operated vent windows.
- Power-operated tailgate window in 3-seat model.
- New sturdier perimeter-type frame.

Den Mothers need big room for maneuvers. They find it in the CHEVELLE NOMAD

If you've ever had to confine a small pack of "good scouts" to close quarters, you'll appreciate why this new Chevelle Nomad (Chevrolet's lowest priced wagon) was built. And how it's built! Tough . . . with durable popsicle-proof vinyl interiors plus vinyl-coated metal sidewalls in rear compartment and rubber mats underfoot. Roomy: nearly 28 sq. ft. of load floor back there for puppy dogs and pup tents. Plenty of space for additional bulk up-top on a luggage rack you can order with or without all-weather cover.

Dress Nomad in snappy new wheel covers available in many designs; order vent shades (for a dash of class) and a few creature-comforts like deluxe front seat cushions and AM/FM radio. With the standard 140-hp Turbo-Thrift 230 Six or 200-hp Turbo-Fire 307 V8 and fully synchronized 3-Speed, you're set for power . . . and economy. Tow what you can't stow . . . order a hitch and larger V8 power.

Here are a few of many Nomad standard features

- All-new body and instrument panel styling for 1968.
- Exhaust emission control system.
- Three all-vinyl interior colors keyed to 15 exterior hues.
- Automatic ignition key alarm.
- Front seat shoulder belts and rear shoulder belt anchors.
- 50.1" x 28.5" tailgate opening for loading large objects.
- Front side marker lights.
- A vast array of safety features (see list on page 12).



Nomad Custom 2-Seat Wagon.



Nomad 2-Seat Wagon.

POWER TEAMS

Chevrolet and Chevelle power teams for 1968 offer wide choices of economy and performance for every wagon need. A greater array of axle ratios, too, including the new 2.56:1 and 2.29:1 economy ratios available for Chevrolet with the Turbo Hydra-Matic automatic transmission, depending on other equipment. Standard V8 is the new, larger 200-hp engine with a 307-cu.-in. displacement. Additional '68 features: new exhaust emission control systems for all engines and quiet exhaust systems on all V8s; efficient valve-in-head design with hydraulic valve lifters on every engine; full-circle cooling; Delcotron generator and Delco energizer-type battery.

CHEVROLET—STANDARD ENGINES (depending on the model you choose): Economical 155-hp Turbo-Thrift 250 Six with fully counterbalanced crankshaft, and new larger 200-hp Turbo-Fire 307 V8 with increased '68 power. **EXTRA-COST ENGINES:** New 250-hp Turbo-Fire 327 V8 has four-barrel carburetor and uses regular-grade gas. Popular 275-hp Turbo-Fire 327 V8. Higher performance and most advanced design with the 325-hp Turbo-Jet 396 V8. Top-of-the-line power and efficiency in 385-hp Turbo-Jet 427 V8.

STANDARD TRANSMISSION: Fully synchronized 3-Speed, available with most engines. **EXTRA-COST TRANSMISSIONS:** *Special 3-Speed*, fully synchronized, for 396- and 427-cu.-in. V8s. *Overdrive*: top economy and efficiency for sustained highway driving. Fully synchronized 4-Speed: four forward speeds with floor-mounted shift lever; affords sportiness and maximum efficiency use of horsepower from all V8s. Automatic *Powerglide*: smooth, dependable, automatic shifting. Automatic *Turbo Hydra-Matic*: the ultimate in automatic or manual shifting with three forward speeds plus reverse.

CHEVELLE—STANDARD ENGINES (depending on the model you choose): 140-hp Turbo-Thrift 230 Six for efficient economy and new 200-hp Turbo-Fire 307 V8 for greater 1968 power. **EXTRA-COST ENGINES:** 155-hp Turbo-Thrift 250 Six delivers economical, reliable power. New 250-hp Turbo-Fire 327 V8 has four-barrel carburetor and uses regular-grade gas. 275-hp Turbo-Fire 327 V8: four-barrel carburetor for outstanding V8 wagon performance. 325-hp Turbo-Fire 327 V8: higher compression ratio and horsepower deliver exceptional performance and efficiency.

STANDARD TRANSMISSION: Fully synchronized 3-Speed (for all engines except 325-hp V8). **EXTRA-COST TRANSMISSIONS:** *Special 3-Speed*: fully synchronized in all forward speeds; available for all engines. Floor-mounted shift lever. *Overdrive*: more fuel economy and minimum engine wear. 4-Speed: fully synchronized four-on-the floor. Automatic *Powerglide*: renowned shifting ease and smoothness.

CHEVROLET WAGON POWER TEAMS	STANDARD 3-SPEED FULLY SYNCHRO- NIZED	EXTRA-COST TRANSMISSIONS				
		SPECIAL 3-SPEED FULLY SYNCHRO- NIZED	OVERDRIVE	4-SPEED FULLY SYNCHRO- NIZED	POWERGLIDE AUTOMATIC	TURBO HYDRA- MATIC AUTOMATIC
STANDARD ENGINES						
155-HP TURBO-THRIFT 250 SIX*	●		●		●	
200-HP TURBO-FIRE 307 V8	●		●	●	●	●**
EXTRA-COST ENGINES						
250-HP TURBO-FIRE 327 V8	●			●	●	●
275-HP TURBO-FIRE 327 V8	●			●	●	●
325-HP TURBO-JET 396 V8		●		●	●	●
385-HP TURBO-JET 427 V8		●		●		●

*NOT AVAILABLE ON CAPRICE OR IMPALA WAGONS.

**CAPRICE AND IMPALA ONLY.

Chevrolet-built wagons do so much for your motoring peace of mind

For many people, wagons are a way of life . . . affording many additional and rewarding hours of use in family travel or on the job. That's why each '68 Chevrolet and Chevelle wagon has many dependable, easy-care features like • Flush-and-dry rocker panels cleaned and dried by a specially diverted water and air flow to minimize corrosion • Inner fender panels to help shield outer fenders against corrosive effects of road tar and salt • Safety-Master brakes that adjust themselves when applied while car is backing up • Long-life exhaust systems • Battery-saving Delcotron generator that turns out greater current, even at low engine speeds; has no conventional commutator to wear out • Delco energizer-type battery with the "Delco Eye" that gives off a glow to remind when fluid should be added.

SAFETY FEATURES STANDARD ON ALL CHEVROLET-BUILT WAGONS FOR 1968 Chevrolet-built wagons provide a high degree of safety for you and your passengers. Highlights for 1968 include:

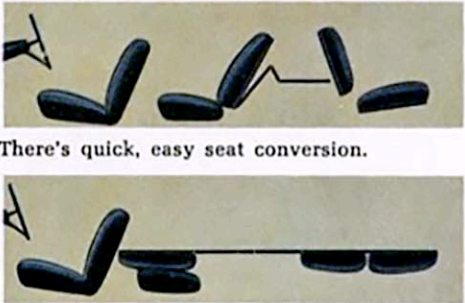
• Energy-absorbing steering column • Seat belts with pushbutton buckles for all passenger positions • Shoulder belts for driver and right front passenger with push-button buckles and convenient stowage provision on all models • Passenger-guard door locks with deflecting lock buttons—all doors • Four-way hazard warning flasher • Dual master cylinder brake system with warning light and corrosion-resistant brake lines • Latches on folding seat backs • Dual-speed windshield wipers and washers • Outside rearview mirror • Backup lights • New side marker lights and parking lights that illuminate with headlights • Padded instrument panel, sun visors, windshield pillars • Reduced-glare instrument panel top, inside windshield moldings, horn button, steering wheel hub, and windshield wiper arms and blades • Inside day-night mirror with deflecting base • Lane-change feature in direction signal control • Safety armrests • Thick-laminate windshield • Soft, low-profile window control knobs, and coat hooks • Energy-absorbing seat backs • Yielding door and window control handles • Energy-absorbing instrument panel with smooth contoured knobs and levers • Tire safety rim • Safety door latches and hinges • Uniform shift quadrant • Snag-resistant steering wheel hardware • Fuel tank and filler pipe security.

CHEVELLE WAGON POWER TEAMS	STANDARD 3-SPEED FULLY SYNCHRO- NIZED	EXTRA-COST TRANSMISSIONS			
		SPECIAL 3-SPEED FULLY SYNCHRO- NIZED	OVERDRIVE	4-SPEED FULLY SYNCHRO- NIZED	POWERGLIDE AUTOMATIC
STANDARD ENGINES					
140-HP TURBO-THRIFT 230 SIX	●	●	●		●
200-HP TURBO-FIRE 307 V8	●	●	●	●	●
EXTRA-COST ENGINES					
155-HP TURBO-THRIFT 250 SIX	●	●	●		●
250-HP TURBO-FIRE 327 V8	●	●		●	●
275-HP TURBO-FIRE 327 V8	●	●		●	●
325-HP TURBO-FIRE 327 V8		●		●	

CHEVROLET

BODY: Superlative Body by Fisher craftsmanship and durability. Solid Unisteel design. All body structure parts welded together forming one solid unit. Eight rubber body mounts with rubber cushioning between body and frame to minimize vibration and noise. Thick sound insulation (plus advanced engine and transmission mounting system) for a decidedly quiet ride. High-level cowl ventilation system channels air through vents in front compartment cowl side panels, and through blended air heater and defroster. New Astro Ventilation can be ordered for Caprice and Impala wagons. It provides a quiet flow of outside air through vent-ports mounted in the instrument panel (vent-ports may be adjusted to direct air flow to desired areas). Power-operated tailgate window, standard on 3-seat models, has up-down switch on instrument panel and at exterior tailgate lock; down switch at third seat location.

CHASSIS/SUSPENSION: Rugged perimeter-type frame for added strength and maximum body part cohesion; torque-box construction with four crossmembers and transmission support. Full Coil suspension and double-acting shock absorbers for road-sure ride. Front suspension anti-dive and rear suspension anti-squat features. Ball-Race steering gear with parallel relay system and advanced linkage design for accurate, effortless steering. Overall steering ratio is 30.7:1; with power, 21.2:1. A 119" wheelbase with wide-tread tires for sure, stable ride. Statically balanced wheels and tires for smooth, quiet ride and long tire life. Rayon-reinforced rear brake hoses. Dual master cylinder brake system provides an additional safety measure. Safety-Master brakes with bonded brake linings aid braking system life.



There's quick, easy seat conversion.

Seats convert into broad, flat load floor.



WAGON DIMENSION CHART	LENGTH	WIDTH	HEIGHT	LOAD FLOOR LENGTH		MAXIMUM LOAD FLOOR WIDTH	WIDTH BETWEEN WHEEL HOUSES	MAXIMUM CARGO COMPRMTNT. HEIGHT	TAILGATE OPENING HEIGHT	TAILGATE OPENING WIDTH AT FLOOR	TOTAL CARGO VOLUME (CU. FT.)	
				BEHIND FRONT SEAT	WITH TAILGATE OPEN						2-SEAT	3-SEAT
CHEVROLET WAGONS	213.9"	79.6"	56.7"	96.0"	122.8"	63.2"	49.7"	30.7"	28.8"	52.4"	106.1	101.3
CHEVELLE WAGONS	207.1"	75.7"	55.2"	90.9"	117.0"	59.5"	44.5"	31.6"	28.5"	50.1"	Up to 94.0	— —



Enjoy up to 80 minutes of uninterrupted music with a transistorized Delco stereo tape system; complimentary cartridge included.



Selective listening pleasure is yours with the AM/FM stereo multiplex radio. Indicator light separates stereo from monaural stations.



Slip into even the most cramped parking places with effortless ease via power steering.

Options to make Chevrolet's '68 wagons fit your desires in comfort, convenience, appearance and performance

Whatever the reason for choosing your '68 Chevrolet or Chevelle wagon, you'll enjoy it more with extra-cost Options* and Custom Features* like these.

CHEVROLET AND CHEVELLE

- Appearance Guard Group** — door edge guards; front bumper guards; front and rear floor mats
- Auxiliary lighting—ashtray light (standard on Caprice); courtesy light (standard on Caprice); front fender lights (Chevrolet only—standard on Caprice); ignition lock light (Chevrolet only); glove box light; underhood light
- Power tailgate window (standard on 3-seat models)
- Power steering
- Power brakes
- Power side windows
- Soft-Ray tinted glass
- Electric clock (standard on Caprice)
- Remote-control outside rearview mirror
- Portable spotlight
- Deluxe seat and shoulder belts
- Roof luggage carrier
- Luggage carrier cover
- Trailer hitch
- Trailer wiring harness
- Front seat head restraints
- Light monitoring system
- Stereo tape system
- All-transistor push-button radios: AM; AM/FM; AM/FM stereo
- Comfortilt steering wheel that adjusts to seven different angles
- Cruise-Master speed control
- Speed warning indicator
- Air conditioning: Four-Season; Comfort-Car
- Tailgate window air deflector
- Tri-Volume horn
- Front disc brakes
- Positraction rear axle
- Special-duty items: rear axle ratios; radiator, suspension, battery and Delcotron generators; Superlift air-adjustable shock absorbers
- Emergency road kit
- Temperature-controlled engine fan
- Fire extinguisher
- Gas cap lock
- Deluxe front seat cushions

CHEVROLET WAGONS ONLY

- Decor Group** — deluxe steering wheel (standard on some models); door and window frame moldings (standard on Impala and Caprice); wheel covers (standard on Caprice)
- Astro Ventilation (Caprice & Impala only)
- Comfortron automatic air conditioning
- Deluxe adjustable luggage carrier
- Stowage well lock for 2-seat models
- Deep-twist carpeting
- for load floor (Impala and Caprice only)
- Power 6-way front seat
- Power door lock system
- Automatic Level Control
- Concealed headlights (Caprice only)

*See your Chevrolet dealer for specific details on model application and availability with other equipment including tire sizes and appearance features.

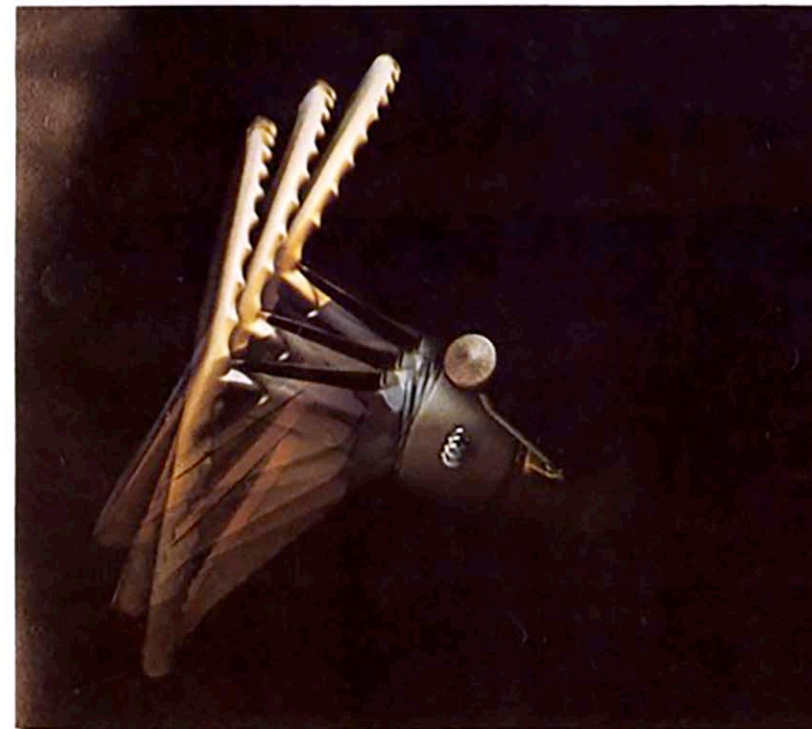
**Items may be ordered individually or as a group.



Hauling a trailer? Specify items like trailer hitch and car-to-trailer plug-in electrical harness. With or without trailer, special-duty equipment like Superlift air-adjustable rear shock absorbers can be ordered for load-carrying assistance.



Order the ease and convenience of power brakes; less pedal effort is required for stopping, even over hilly terrain.



Specify the practical Comfortilt steering wheel; allows drivers sharing the same wagon to adjust wheel to any angle of seven they like best.



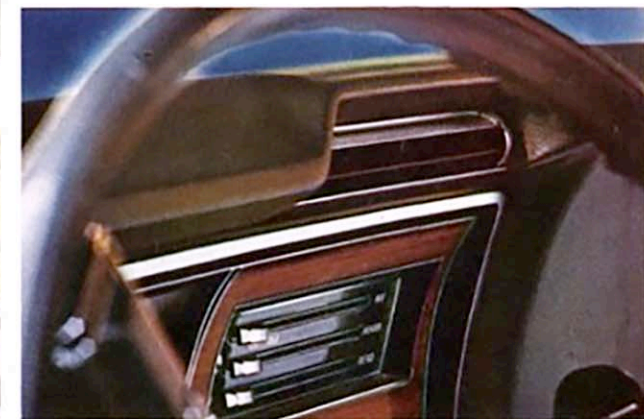
Long drives are shorter hops when you order relaxing front seat head restraints for your wagon.



A must for wagon treks is a convenient, practical roof-top luggage carrier and all-weather cover.



Power-operated tailgate window (standard on 3-seat models) activates from instrument panel and rear locations.



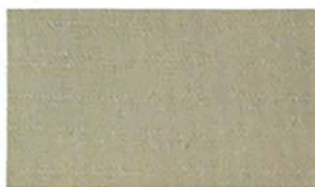
Control the weather with Comfort-Car, Four-Season or fully automatic Comfortron air conditioning (Four-Season shown).

1968 WAGON COLORS AND FABRICS

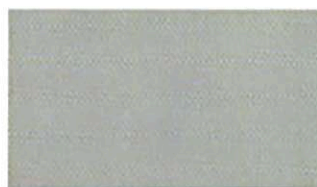
Colors shown here can only approximate the true Chevrolet paint and fabric colors and are intended only to help visualize the wide selection of colors available. Paint chips and fabric swatches showing the actual colors can be seen at your Chevrolet dealer's showroom.



Tuxedo Black



Ash Gold



Seafrost Green



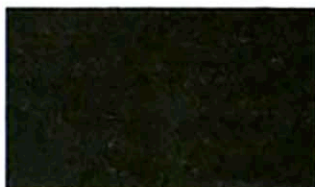
Impala vinyl in saddle



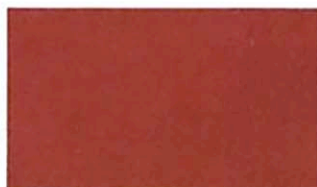
Caprice vinyl in turquoise



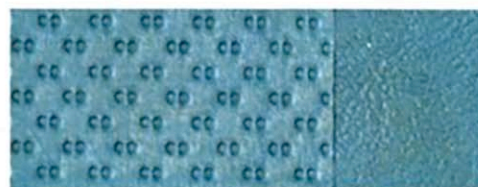
Ermine White



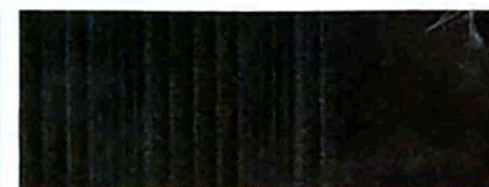
Sequoia Green



Matador Red



Bel Air vinyl in turquoise



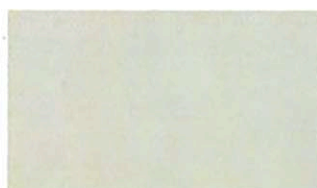
Biscayne vinyl in black



Grotto Blue



Tripoli Turquoise



Palomino Ivory



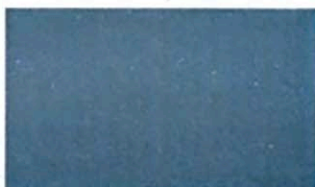
Malibu vinyl in black



Concours vinyl in blue



Fathom Blue



Teal Blue



Grecian Green



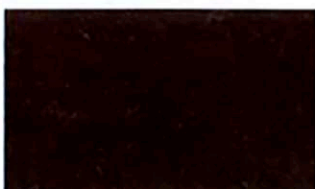
Nomad Custom vinyl in dark blue



Nomad vinyl in saddle



Island Teal



Cordovan Maroon



Butternut Yellow

Exterior: Order any one of these 15 Magic-Mirror acrylic lacquer finishes for the wagon of your choice. Depending on the Chevrolet or Chevelle wagon you select, up to six two-tone color combinations are also available. For protection in transit, your wagon receives a waxing before leaving the factory.

Interior: Here are representative all-vinyl interior colors and textures. Your Chevrolet dealer has full details. If you'd like to become better acquainted with the new Chevrolet passenger cars, be sure to pick up a 1968 Chevrolet, Chevelle, Camaro, Chevy II Nova, Corvair, Corvette or All-Line catalog from your Chevrolet dealer.

Be Smart • Be Sure • Buy Chevrolet!




ALL ILLUSTRATIONS AND SPECIFICATIONS CONTAINED IN THIS LITERATURE ARE BASED ON THE LATEST PRODUCT INFORMATION AVAILABLE AT THE TIME OF PUBLICATION. APPROVAL. THE RIGHT IS RESERVED TO MAKE CHANGES AT ANY TIME WITHOUT NOTICE IN PRICES, COLORS, MATERIALS, EQUIPMENT, SPECIFICATIONS AND MODELS, AND ALSO TO DISCONTINUE MODELS. CHEVROLET MOTOR DIVISION, GENERAL MOTORS CORPORATION, DETROIT, MICHIGAN 48202.





1968 CHEVROLET WAGONS

for people who want big room 

1968 WAGON COLORS AND FABRICS

Colors shown here can only approximate the true Chevrolet paint and fabric colors and are intended only to help visualize the wide selection of colors available. Paint chips and fabric swatches showing the actual colors can be seen at your Chevrolet dealer's showroom.

				
Tuxedo Black	Ash Gold	Seafrost Green	Impala vinyl in saddle	Caprice vinyl in turquoise
				
Ermine White	Sequoia Green	Matador Red	Bel Air vinyl in turquoise	Biscayne vinyl in black
				
Grotto Blue	Tripoli Turquoise	Palomino Ivory	Malibu vinyl in black	Concours vinyl in blue
				
Fathom Blue	Teal Blue	Grecian Green	Nomad Custom vinyl in dark blue	Nomad vinyl in saddle
				
Island Teal	Cordovan Maroon	Butternut Yellow		

Exterior: Order any one of these 15 Magic-Mirror acrylic lacquer finishes for the wagon of your choice. Depending on the Chevrolet or Chevelle wagon you select, up to six two-tone color combinations are also available. For protection in transit, your wagon receives a waxing before leaving the factory.

Interior: Here are representative all-vinyl interior colors and textures. Your Chevrolet dealer has full details. If you'd like to become better acquainted with the new Chevrolet passenger cars, be sure to pick up a 1968 Chevrolet, Chevelle, Camaro, Chevy II Nova, Corvair, Corvette or All-Line catalog from your Chevrolet dealer.

Be Smart • Be Sure • Buy Chevrolet!



ALL ILLUSTRATIONS AND SPECIFICATIONS CONTAINED IN THIS LITERATURE ARE BASED ON THE LATEST PRODUCT INFORMATION AVAILABLE AT THE TIME OF PUBLICATION APPROVAL. THE RIGHT IS RESERVED TO MAKE CHANGES AT ANY TIME WITHOUT NOTICE IN PRICES, COLORS, MATERIALS, EQUIPMENT, SPECIFICATIONS AND MODELS, AND ALSO TO DISCONTINUE MODELS. CHEVROLET MOTOR DIVISION, GENERAL MOTORS CORPORATION, DETROIT, MICHIGAN 48202.

