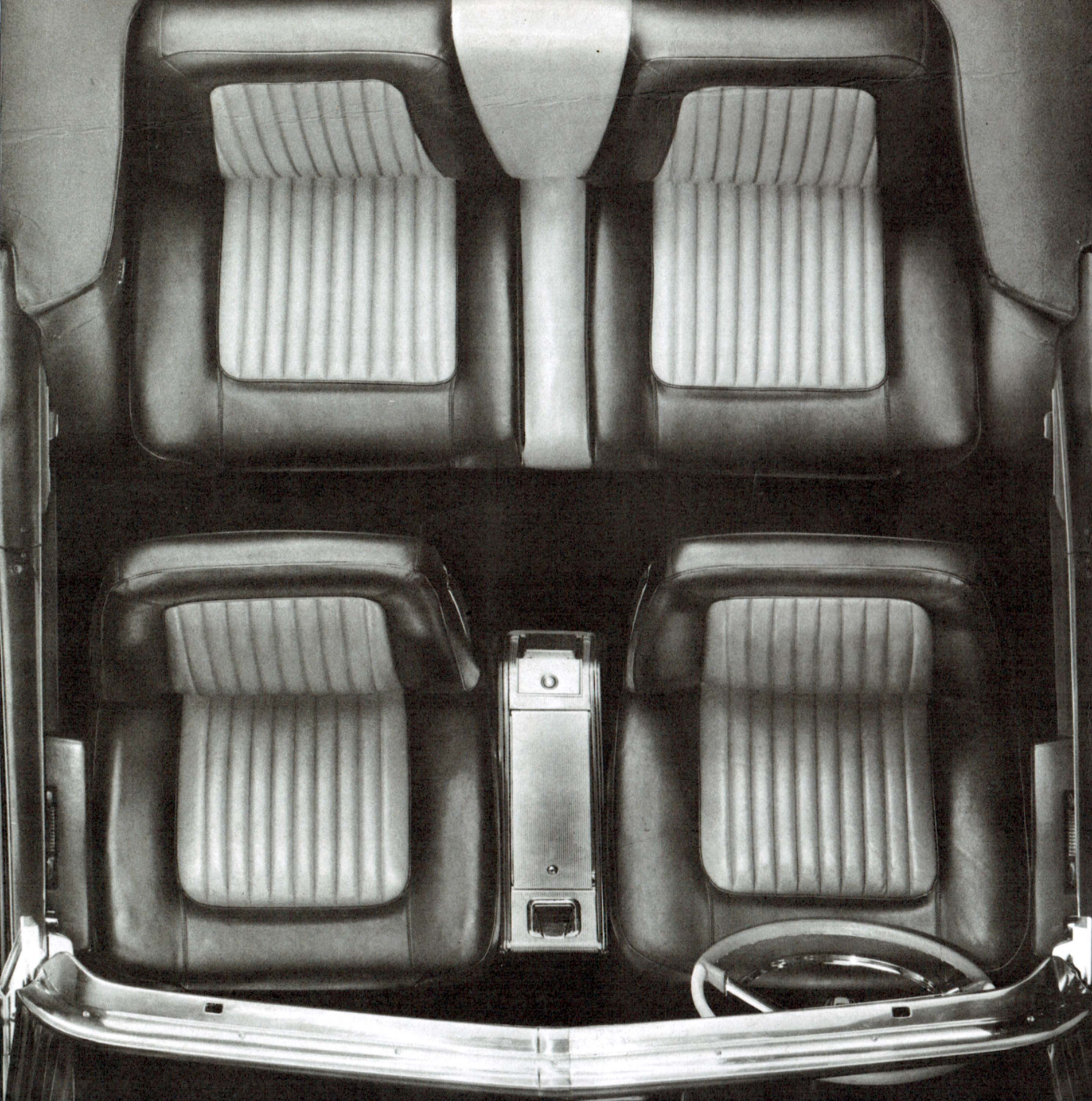


**meet a new Plymouth Sport Fury!**





## Sport Fury/ for the man who wants to go first class—fast!

Make no mistake about it. While many would like to own the limited-production Sport Fury, it is not for everyone. It is for the man—and occasional woman—who can afford the automobile that runs circles—and then some—around other cars in its low-price class.

With an optional Golden Commando V-8 powerplant, the Sport Fury sprints from 0 to 60 mph in 8.5 seconds in its showroom suit! For a family-size car, that's going some!

Performance is the Sport Fury's claim to fame—but other standard features you usually pay extra for also recommend it.

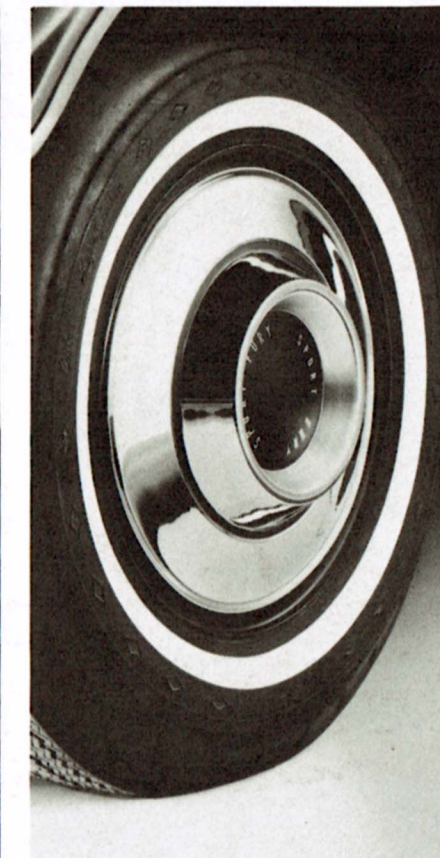
All-vinyl bucket seats with the look and luxury of fine leather. Convenient front-seat console. Padded dash panel. Torsion-bar suspension. Fully-unitized body. Special wheel covers. Distinctive exterior trim. Unique grille.

Notice, too, as you inspect the hardtop or convertible of your choice—the unmistakable craftsmanship of careful coachwork that marks the Sport Fury as quality-engineered throughout.

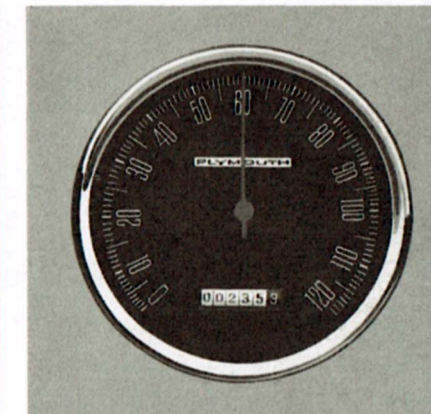
Take advantage of this special offer—come drive a Sport Fury today and get—free of charge—the biggest boot out of driving you've ever enjoyed! Caution: handle this car with care—it's hot!



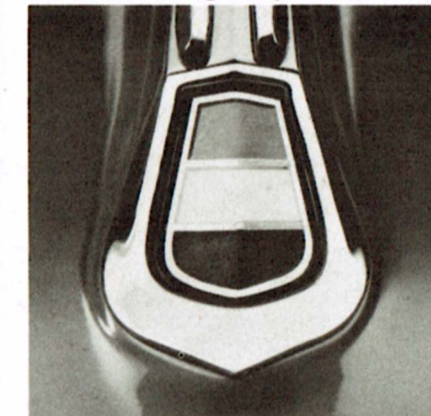
All-vinyl bucket seats with the look of leather—plus convenient console!



Special stainless steel wheel covers!



Floor it—and hang onto your hat!



Distinctive Sport Fury hood ornament!

# Sport Fury/production limited—to assure its perfection!

## Specifications

■ **EXTERIOR DIMENSIONS:** wheelbase, 116.0 in.; tread, front 59.4 in.; tread, rear 57.5 in.; length, overall 202.0 in.; width, overall 75.6 in.; height, overall 54.0 in.  
■ **INTERIOR DIMENSIONS:** headroom, front 34.7 in.; headroom, rear 33.8 in.; legroom, front 45.9 in.; legroom, rear 39.6 in.; hiproom, front 60.8 in.; hiproom, rear 61.0 in.; seat height, front 10.7 in.; seat height, rear 12.3 in.; rear seat knee room 30.1 in. ■ **BRAKES:**

hydraulic, 10-inch diameter, 2.5-inch-wide, servo-contact, self-energizing brakes, with bonded linings. Lining area is 195.2 square inches. Brakes shoes are internal expanding type. A new self-adjusting feature (activated during reverse stops) is incorporated in the design. Separate, foot-operated parking brake, cable-connected, acts on each rear wheel. ■ **SUSPENSION:** front torsion bars and ball joints; rear 2.5-inch-wide asymmetrical leaf springs; shock absorbers, Oriflow type. ■ **PLYMOUTH FURY V-800:** horsepower 230 at 4400 rpm; torque, lbs.-ft., 340 at 2400 rpm; compression ratio, 9.0 to 1; bore, inches 3.91; stroke, inches 3.31; dis-

placement, cubic inches 318; carburetor type, 2 barrels; air cleaner type, dry. ■ **EXTERIOR BODY COLORS:** Baked-enamel finish in your choice of silhouette black, ermine white, cherry red, pale gray, pale blue, luminous blue, sandstone, luminous brown, luminous cordovan.

The policy of Chrysler Corporation is one of continual improvement in design and manufacture wherever possible to assure a still finer automobile. Therefore, specifications, equipment, and prices are subject to change without notice by Chrysler Corporation.

## Plymouth Sport Fury



Quality-engineered by Chrysler Corporation / for the man who wants to go first class—fast!

LITHO IN U.S.A.