



Chevelle Malibu Super Sport Convertible in Goldwood Yellow.

STYLING THAT MOVES YOU EVEN WHEN IT'S STANDING STILL

If you ever can catch a Chevelle that's not on the go, look over its bold, exciting lines and sumptuous interior. It's The Chevelle Look—all new, already classic!

Note, for example, the graceful fender sweep, front to rear. Lamps blending gently into an unbroken total design above the massive rear wraparound bumper. The tastefully restrained use of trim, front, side and rear.

See how functional each crisp detail can be, too! Curved side glass is stylish, yet adds to the generous interior room. 115-inch wheelbase is jaunty, also makes handling and parking

virtually effortless. Rich fabrics and handsome vinyls add interior beauty—and comfort. In coupes and sedans, the squared-off rear window is extremely smart and allows maximum vision.

Eleven beautiful Chevelles, including convertibles, sport coupes, sedans and wagons, offer true Chevrolet value at moderate cost. See them at your Chevrolet dealer's. Test-drive one or two of them while you're there, too.

They'll move you with their styling—and with just about any measure of six or V8 power you like. . . . Chevrolet Division of General Motors, Detroit, Michigan.

Chevrolet • Chevelle • Chevy II • Corvair • Corvette



THE GREAT HIGHWAY PERFORMERS

CHEVELLE! BY CHEVROLET



Chevelle Malibu Super Sport Coupe (all this and bucket seats, too!)

WE DIDN'T JUST MAKE CHEVELLE BEAUTIFUL AND HOPE FOR THE BEST

You might want Chevelle just because you like its looks. But if you think all we had in mind was a good-looking car smaller than Chevrolet and bigger than Chevy II, read on.

One of the most beautiful things about Chevelle is the way it fits between parking meters (with five feet left over), yet still has a Fisher Body-ful of room inside.

Think those curved side windows are only for looks? They slant in for easy entry, and don't need bulky space-wasting doors to roll down into.

Chevelle's long wide hood looks nice, too. But it's that

way because of what goes under it—things like a wide choice of Six and V8 engines, not to mention extra-cost air conditioning and anything else you'd like us to put there.

Chevelle's rear deck is just a smart cover-up for a 27.3-cu.-ft. trunk. (In case you haven't cubed a foot lately, it can hold 4 overnight bags, 2 two-suiters, 2 pullmans, 1 wardrobe and 1 train case, with a set of golf clubs thrown in for good measure.)

We've been very practical about the whole thing. If you think like we do, you're practically driving one already. . . . Chevrolet Division of General Motors, Detroit, Michigan.

Chevrolet • Chevelle • Chevy II • Corvair • Corvette



THE GREAT HIGHWAY PERFORMERS

CHEVELLE! BY CHEVROLET



Malibu Super Sport Coupe

CHEVELLE TREATS MOUNTAINS LIKE SO MUCH DIRT!

The all-new Chevelle has engines for all-sized mountains. And even the smallest one is big enough to take on most hills without so much as a change in gears.

But if you're the shifty type, you can have a lot of fun climbing with the extra-cost floor-mounted 4-Speed Synchro-Mesh.

Combine its power, its spirit, and the fact that it's a foot shorter than big cars—and you have a performer that will unwind any twisting mountain road you put in its way. And because of its Full Coil suspension and

front ride stabilizer, you'll feel completely relaxed when you reach the top.

The Malibu Super Sport Coupe, pictured above, comes with an all-vinyl interior. With deep-twist carpeting. With bucket seats. And in shades of the following exterior colors: black,

green, blue, aqua, fawn, red, tan, white, beige, yellow and silver.

And all 11 Chevelle models are surprisingly spacious inside. The sedans, for instance, comfortably seat six. The trunk holds a vacation-sized load of luggage.

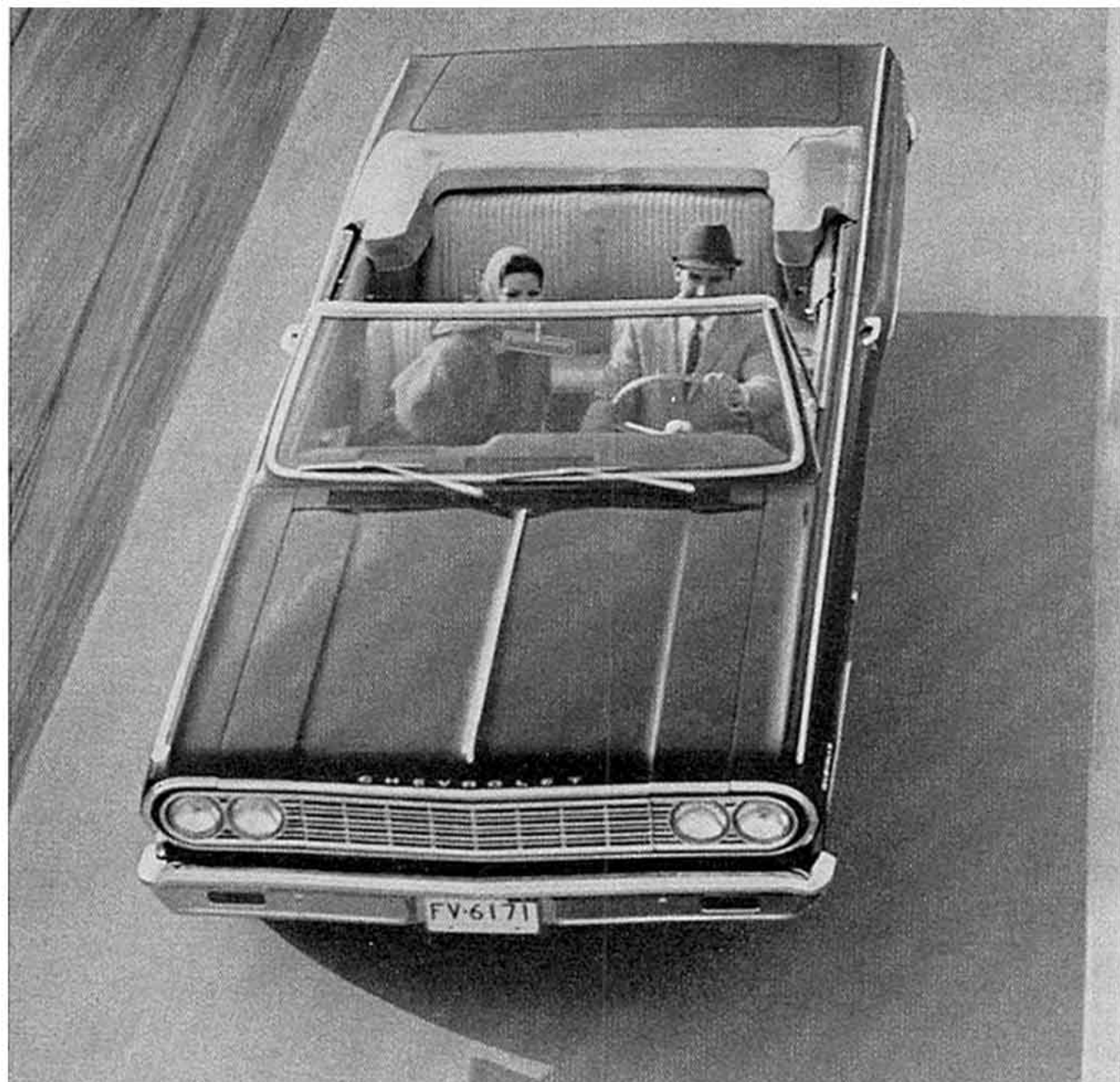
So put a mountain in its way. Or a crowded city street. Or a turnpike. Drive it across deserts. Up mountains. Through rush-hour traffic. Stop it. Start it. Corner it. Park it. Trust it. It's Chevelle. It's made by Chevrolet Division of General Motors, Detroit, Mich.

Chevrolet • Chevelle • Chevy II • Corvair • Corvette



THE GREAT HIGHWAY PERFORMERS

CHEVELLE! BY CHEVROLET




Why would such a nice car hang around with the performance crowd?

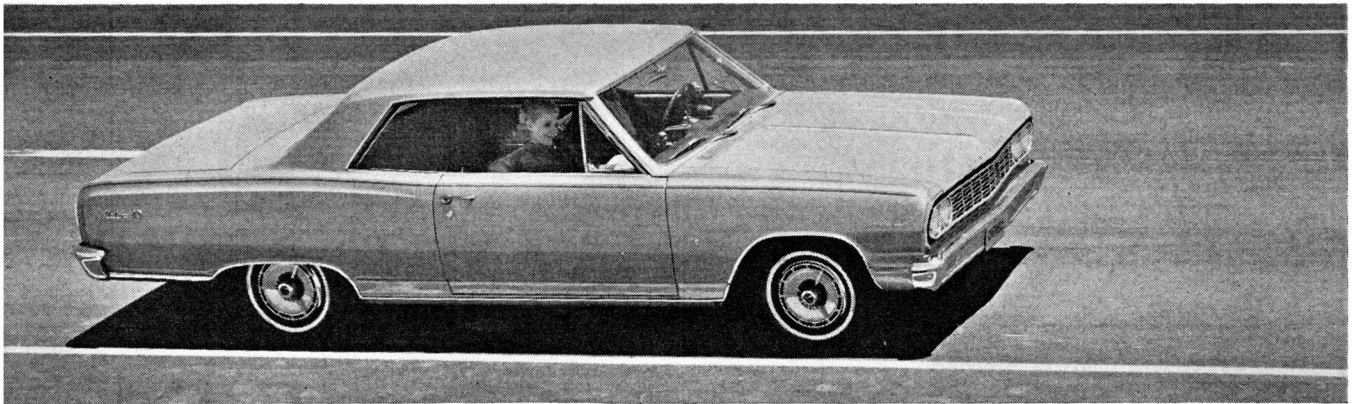
Nobody said a nice car can't play mean now and then.

Chevelle can get out and move with the best of them—for all its plush carpeting and roominess and obvious love of the good life. See for yourself. Get a Malibu Super Sport, fitted with the 220-hp V8*—the one with dual exhausts, 4-barrel carburetion and such. Makes the most of its 283 cubic inches without kicking up a fuss about it. And gives a Synchro-Mesh 4-speed shift* something it can get its teeth into.

Reacts well to extra-cost options like special front and rear suspension, sintered-metallic brake linings, Positraction rear axle and electric tachometer, too. So will you. In fact, if this doesn't do for your driving what red capes do for bulls, our name isn't Chevrolet Division of General Motors, Detroit, Michigan.

CHEVELLE! by 

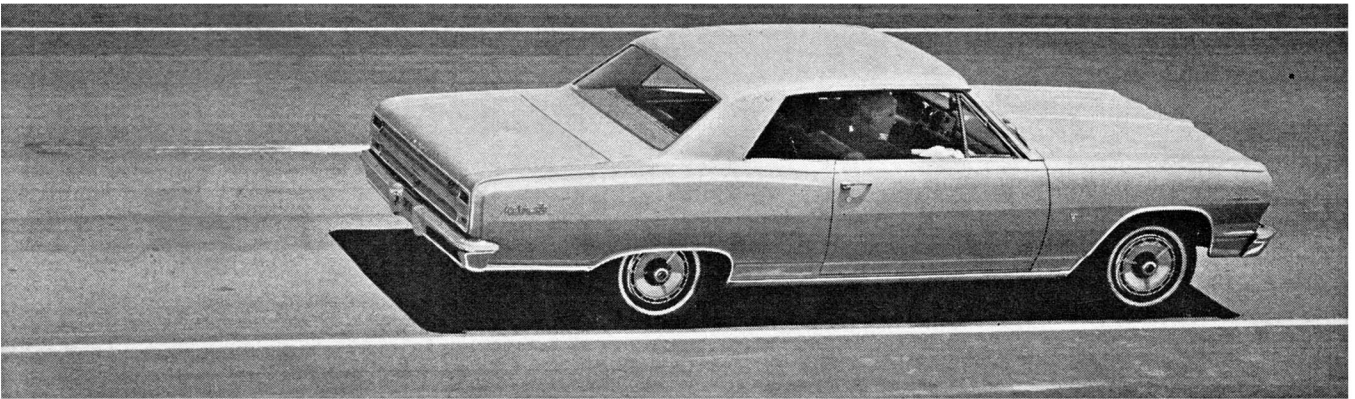
*Optional at extra cost



CHEVELLE IS THE CAR



THAT'S MADE BY THE PEOPLE



WHO MAKE THE CORVAIR AND CORVETTE—Meet the Chevelle Malibu Super Sport. Chevelle is Chevrolet's dapper new package—115-inch wheelbase, separate perimeter-type frame, supple Full Coil suspension, and crisp, tasteful styling. Malibu Super Sport is the series, very strong on elegance, that charges Chevelle with a flavor you can trace right back to the Corvaire and Corvette. In a word, sporting. It includes bucket front seats, all-vinyl interior trim, special instrumentation (oil and water temperature gauges and ammeter), and Super Sport wheel disks, trim and identification. Chevelle's performance options* include all-synchro 4-speed shift, Positraction and sintered-metallic brakes. And a 283-cubic-inch 220-hp V8 with 4-barrel carburetion and dual exhausts. Malibu Super Sports come in Coupe or Convertible versions. Both seem like sports cars until you start piling people and luggage into them. . . . Chevrolet Division of General Motors, Detroit, Michigan.



*Optional at extra cost.