

# 4050

4050





Here's a street machine that's certain to turn heads and bring "victory lane" crowds

into your dealership's performance corner . . . the new Boss 429 Mustang SportsRoof.

Available with Mustang's new "Grabber Blue" exterior capped by a unique racing black hood scoop, with an all-white interior, and powered by the competition-proved 429 Boss V8 engine, this all-out performer features many standard items and options normally seen only at the local tracks or drag strips.



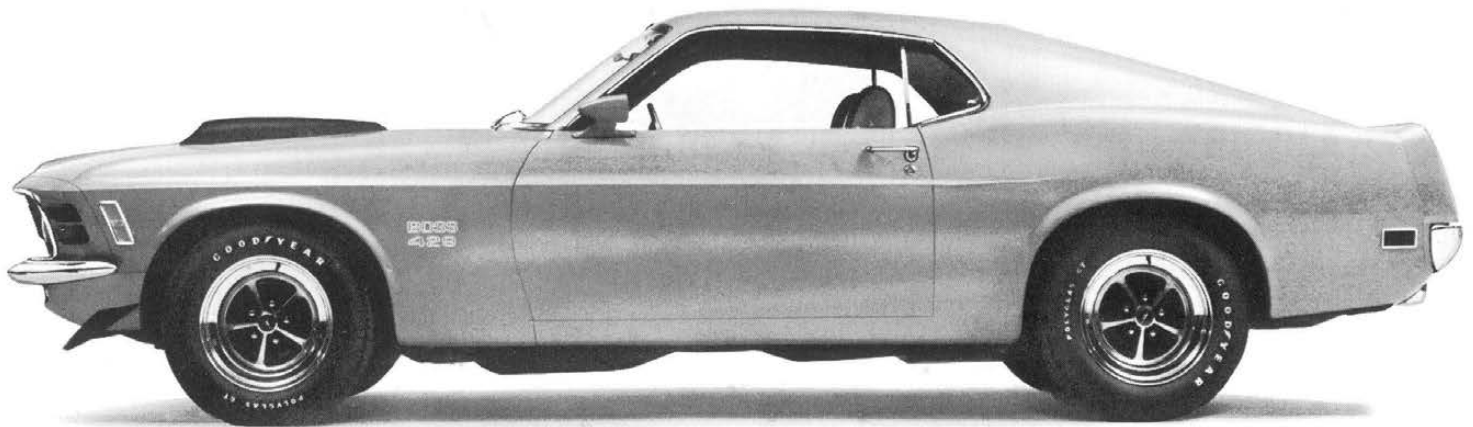
## BOSS 429 EQUIPMENT

The impressive Boss 429 standard equipment listing features: • Powerful 429 Boss V8 engine with a functional hood scoop and driver-controlled ram air intake, "semi-hemi" cylinder heads, free flow exhaust manifold, high rise intake manifold, cast aluminum rocker covers, solid (mechanical) lifters, forged steel crankshaft and a Holley 735-cfm 4-barrel carburetor • High-capacity engine oil cooler • 65-Ampere alternator • 85-Ampere/hour, trunk-mounted battery • Front air spoiler • Magnum 500 Chrome Steel Wheels • F60 x 15 wide-oval fiberglass-belted tires with raised white letters • Space saver spare tire • High-back bucket seats • Long-wearing nylon carpeting.

Options required at extra cost on the Boss 429 include: • Close-ratio 4-speed manual transmission with a Hurst Shifter®, trip odometer and 8000 rpm tachometer • Ford's exclusive "Fluidic-Control" power steering that coasts to give "feel of the road" at high speeds and provides maximum output while parking or during low-speed cornering • Power brakes with front discs and heavy-duty rear drums • Special suspension with extra-heavy-duty performance front and rear springs and shock absorbers, extra-heavy-duty front stabilizer bar, rear stabilizer bar and a staggered rear shock absorber arrangement with one shock ahead and the other behind the rear axle • Floor console with stowage compartment • Deluxe seat belts with reminder light • Interior decor group with



"Comfortweave" knitted vinyl seat trim, formed door trim panels, simulated teak-wood-grained instrument panel and console appliques and outside color-keyed and racing mirrors • Electric clock (round) • Convenience group with trunk light, glove compartment light, headlights-on warning buzzer, left hand remote control mirror, automatic seat back latch and parking-brake-on reminder light • AM push button radio • Rim blow-deluxe 3-spoke steering wheel • Drag-pack axle with a "Traction-Lok" differential and a 3.91:1 rear axle ratio.



## BOSS 429 MUSTANG SPORTSROOF

### DIMENSIONS

Wheelbase.....	108
Tread, Front.....	59.5
Tread, Rear.....	59.5
Overall Height.....	50.4
Overall Length.....	187.4
Overall Width.....	71.8

### SPECIFICATIONS

Curb Weight.....	3530
Weight Distribution (unladen).....	56/44
Tire Size.....	F60 x 15
Brakes.....	Power
Brakes (Type).....	Front Disc, Rear Drum
Engine (Type).....	V8 Push Rod OHV
BHP.....	375 @ 5200
Torque.....	450 @ 3400
Construction.....	Steel, Platform-Chassis
(Unit Body Welded to Reinforced Platform Chassis)	

### BOSS 429 ENGINE SPECIFICATIONS

Displacement and type... 429 CID OHV V-8	
Brake Horsepower.....	375 @ 5200
Lbs. Ft. Torque.....	450 @ 3400
Bore and Stroke.....	4.36 In. x 3.59 In.
Firing Order.....	1,5,4,2,6,3,7,8
Compression Ratio.....	10.5 to 1
Fuel.....	Premium
Oil Capacity.....	8 quarts
(including Oil Cooler and Filter)	
Cylinder Block.....	Cast Iron
Cylinder Heads.....	Aluminum
Intake Valve Diameter.....	2.28 In.
Exhaust Valve Diameter.....	1.90 In.
Valve Rocker Covers.....	Diecast Aluminum
Intake Manifold.....	Aluminum—High Rise
Crankshaft.....	Forged Steel, Statically and Dynamically balanced.
Main Bearings.....	5
Main Bearing Diameter.....	2.9998 In.
Rod Bearing Diameter.....	2.5000 In.
Valve Operation.....	Push Rod—Solid Lifter
Carburetor.....	Holley, 4-Barrel, 735 CFM
Distributor.....	Heavy-Duty Double Breaker, Centrifugal and Vacuum Advance

Spark Plugs.....	Autolite AF32
Coolant Capacity.....	22½ Quarts
(Including Heater)	
Emission Control.....	Thermactor
Choke.....	Manual

### CLUTCH

Type.....	Semi-Centrifugal, Single Disc, Dry Plate
Pressure Plate Springs (Type).....	Coil
Total Spring Load.....	1162
Clutch Facing	
Material.....	Woven Asbestos
O.D. and I.D. (Inches).....	11.5 x 7
Total Effective Area (Sq. In.).....	130.5
Thickness (Inches).....	125
Torsional Damping Method (Type)...	Spring

### GEAR BOX

Type..	Ford, Fully Synchronized Close-Ratio
Speeds.....	Four Forward, One Reverse
Center Distance (Inches).....	4.25
Output Shaft.....	31-Spline, Heavy-Duty
Ratios (Standard).....	2.32:1, First
	1.69:1, Second
	1.29:1, Third
	Direct, Fourth
	2.32:1, Reverse
Shift Mechanism.....	Hurst Shifter®
Lubricant Capacity.....	4 Quarts

### REAR AXLE

Type...	Conventional, Semi-Floating, Straddle Mounted Pinion with Heavy-Duty 9" Ring Gear & 31-Spline Shaft
Ratio.....	Traction-Lok 3.91

### SUSPENSION

Competition-type suspension with heavy-duty front coil and rear leaf springs and shock absorbers, heavy-duty front stabilizer bar and a staggered rear shock absorber arrangement which restrains and damps out "wheel hop" during full throttle starts.	
Shock Absorber Type.....	Direct Acting
Shock Absorber Make.....	Gabriel
Piston Diameter (Inches).....	1.1875

Front Stabilizer Bar	
Type.....	Link (SAE 1090 Steel)
Diameter (Inches).....	.94
Rear Spring Leaves.....	Four
Rear Spring Shackle Type.....	Compression
Rear Stabilizer Bar	
Type.....	Link (SAE 1090 Steel)
Diameter (Inches).....	.62

### STEERING

Type.....	Power
Wheel Diameter (Inches).....	16
Turning Diameter, Curb-to-Curb (Feet) .	37.6
Gear Type and Make..	Ford, Recirculating Ball
Gear Ratios.....	16:1 (Quick Ratio)
Wheel Turns, Lock-to-Lock.....	3.74
Power Steering Type.....	Linkage

### BRAKES

Type.....	Self-Adjusting, Duo-Servo
	Front Disc and Rear Drum
Effective Area (sq. inches).....	146
Gross Lining Area (sq. inches).....	174.2
Swept Area (sq. inches).....	350.5
Front Disc Diameter (inches).....	11.3
Rear Drum Diameter (inches).....	10.0
Wheel Cylinder Bore, Front (inches)..	1.094
Wheel Cylinder Bore, Rear (inches)....	.875
Master Cylinder Bore (inches).....	1.00
Master Cylinder Displacement	
Distribution.....	65% Front, 35% Rear

### TIRES

F60 x 15 Super-Wide-Oval, Bias Cord with Fiberglass Belts Around Outer Periphery and White Brand Letters on the side.

### WHEELS

"Magnum 500" Stamped Steel 15" x 7" JJ, Attached to a Wide-Base Drop-Center Full Safety Steel Rim. Finish is bright chrome.

Product information and specifications in this folder have been obtained from authoritative sources available at the time of publication; however, their continuing accuracy cannot be guaranteed.

MUSTANG

