

1965: The year of the Quick Wide-Tracks



Pontiac Motor Division • General Motors Corporation

Some have it.

Some don't.

Pontiac Tempest does.

There's no fooling your eyes. Competition can talk up their cars and say they've got the best-looking dreamboats of the century. But let's see them park one of their offerings next to this Le Mans. Then watch what happens when they find out it's all Pontiac with Wide-Track ride, 140-hp six, and low-priced, too!

**Pontiac invented a machine
that manufactures fun.
Here's the new refined
and polished version
of their invention—
the '65 Pontiac Le Mans.**

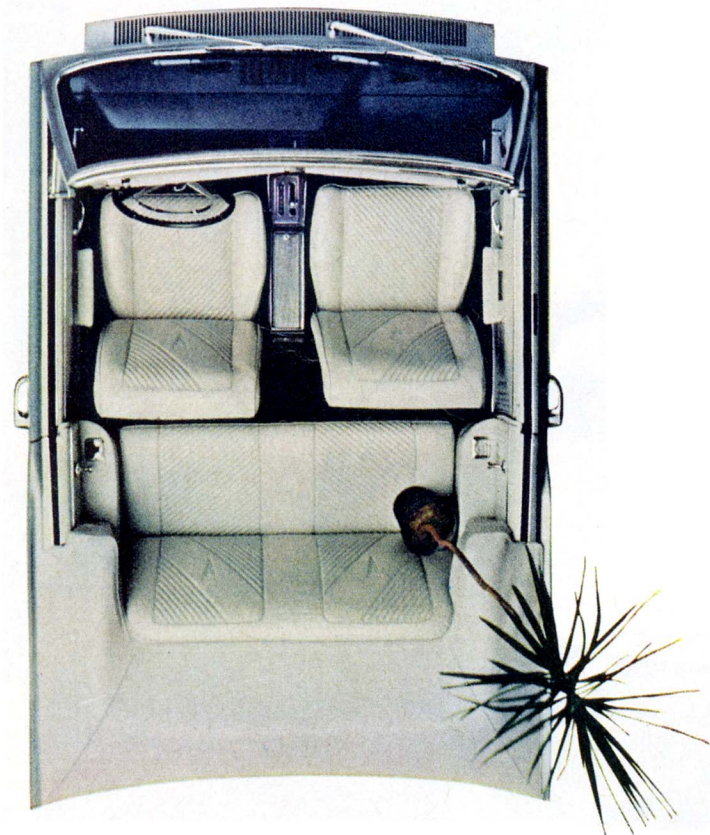
The Le Mans could go to show you that good looking cars and back-breaking payments every month don't always go hand in hand.

It's a hardtop, a sports coupe, and a convertible—all 2-doors, bucket-seated, and slathered all over with thick carpeting.

There's also a special new model we've just brought out this year—the 4-Door Le Mans—for those who dig the Le Mans look but need bench seats and a whole bunch of doors.

The standard Le Mans engine is a 140-bhp in-line 6. Next one up is a regular gas 250-bhp V-8. Then comes the big-voiced one, the premium gas 285-bhp V-8.

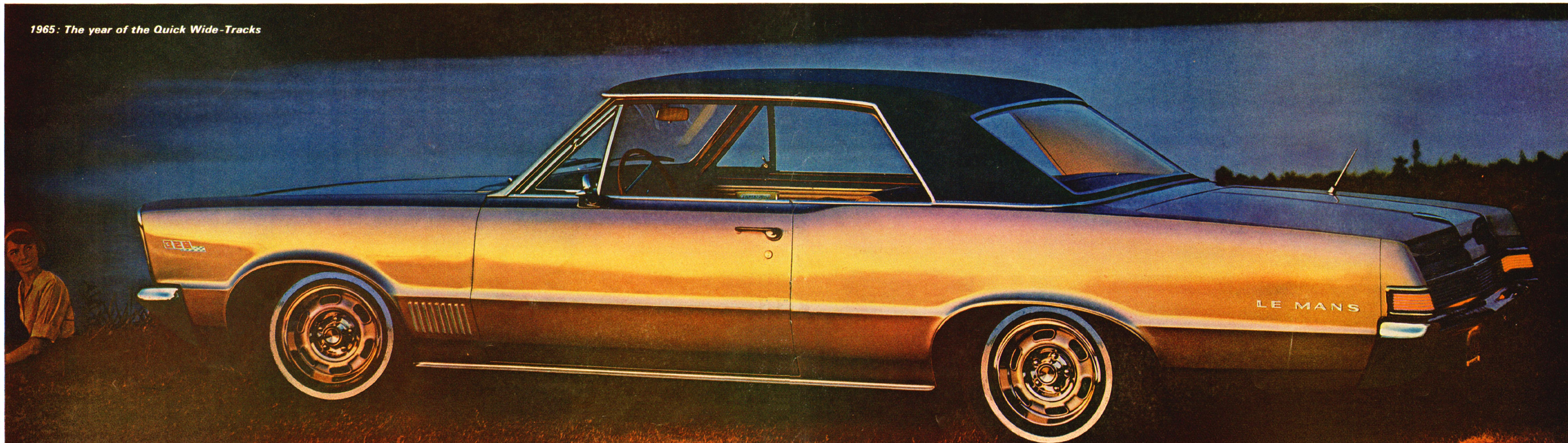
Try one. You've got nothing to lose but the habit of buying dull cars.



1965: The year of the Quick Wide-Tracks



1965: The year of the Quick Wide-Tracks



Pontiac Motor Division - General Motors Corporation

'65 Pontiac Tempest. Would you believe it? You could have one of these for what you pay for a low-priced car.

Who could look at this Le Mans hardtop and keep on buying the same low-priced car time after time? Not people who know a big money's-worth when they see it. Tempest is, after all, a Pontiac, right down to its Wide-Track wheels. Power: 140-hp Six or you can specify a tigerish V-8. Grrrrrrr.