

The Car That "Swept the Field" at Daytona . . .

CHRYSLER 300

It's the most breathtaking car to drive you've ever known! You'll be off and away in this brilliant new low-slung beauty to the throaty roar of 300 hp — the greatest, *safest* power in any American car. You'll feel the same thrill that today's most avid sports-car enthusiasts enjoy . . . the same light-handed, light-footed control and ground-gripping security.

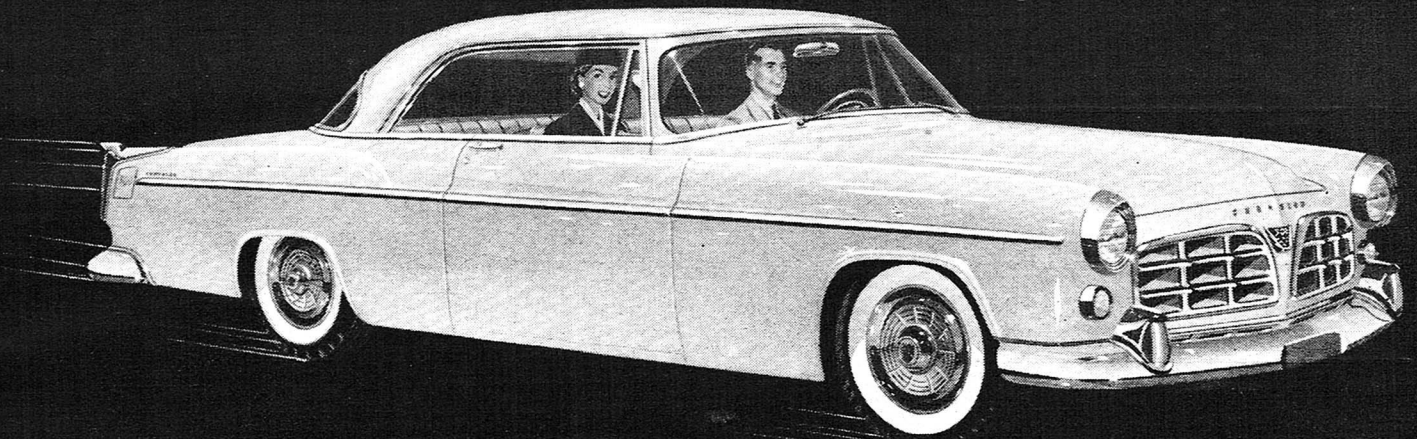
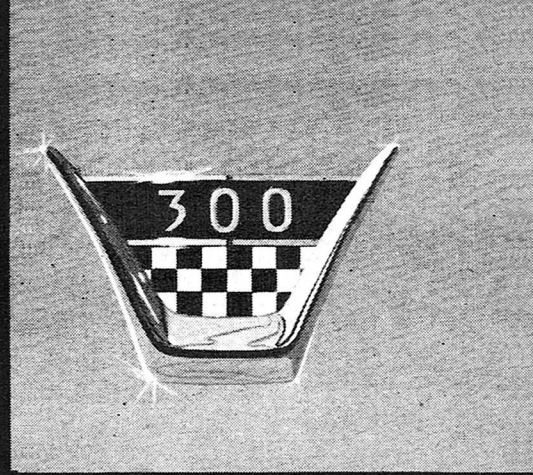
In a Chrysler 300 you can enjoy *the same flashing performance that won 1st and 2nd places in the 1955 NASCAR Daytona Beach*

"Flying Mile," at speeds over 130 mph — plus the safe maneuverability and endurance that swept 1st and 2nd places in the 160-mile Grand National stock car race. For the sleek and stunning new CHRYSLER 300 . . . in regular, though limited production . . . has the same road-hugging look, feel, and safety that have made the Chrysler name famous in the world's greatest road races.

Arrange for a drive today . . . your Chrysler Dealer is the man to see!

AMERICA'S MOST POWERFUL STOCK CAR

Brake HP: 300 @ 5200 rpm . . .
Comp. Ratio: 8.5 to 1 . . . Two
4-barrel carburetors . . . Special
suspension for maximum corner-
ing, road-hugging performance
and control . . . PowerFlite
Automatic Transmission . . .
Power Brakes . . . Dual exhaust
system . . . Wheelbase: 126
inches . . . Over-all length: 219
inches . . . Height: 58.6 inches.



The Car That "Swept the Field" at Daytona...

CHRYSLER 300

It's the most breathtaking car to drive you've ever known! You'll be off and away in this brilliant new low-slung beauty to the throaty roar of 300 hp—the greatest, *safest* power in any American car. You'll feel the same thrill that today's most avid sports-car enthusiasts enjoy... the same light-handed, light-footed control and ground-gripping security.

In a Chrysler 300 you can enjoy *the same flashing performance that won 1st and 2nd places in the 1955 NASCAR*

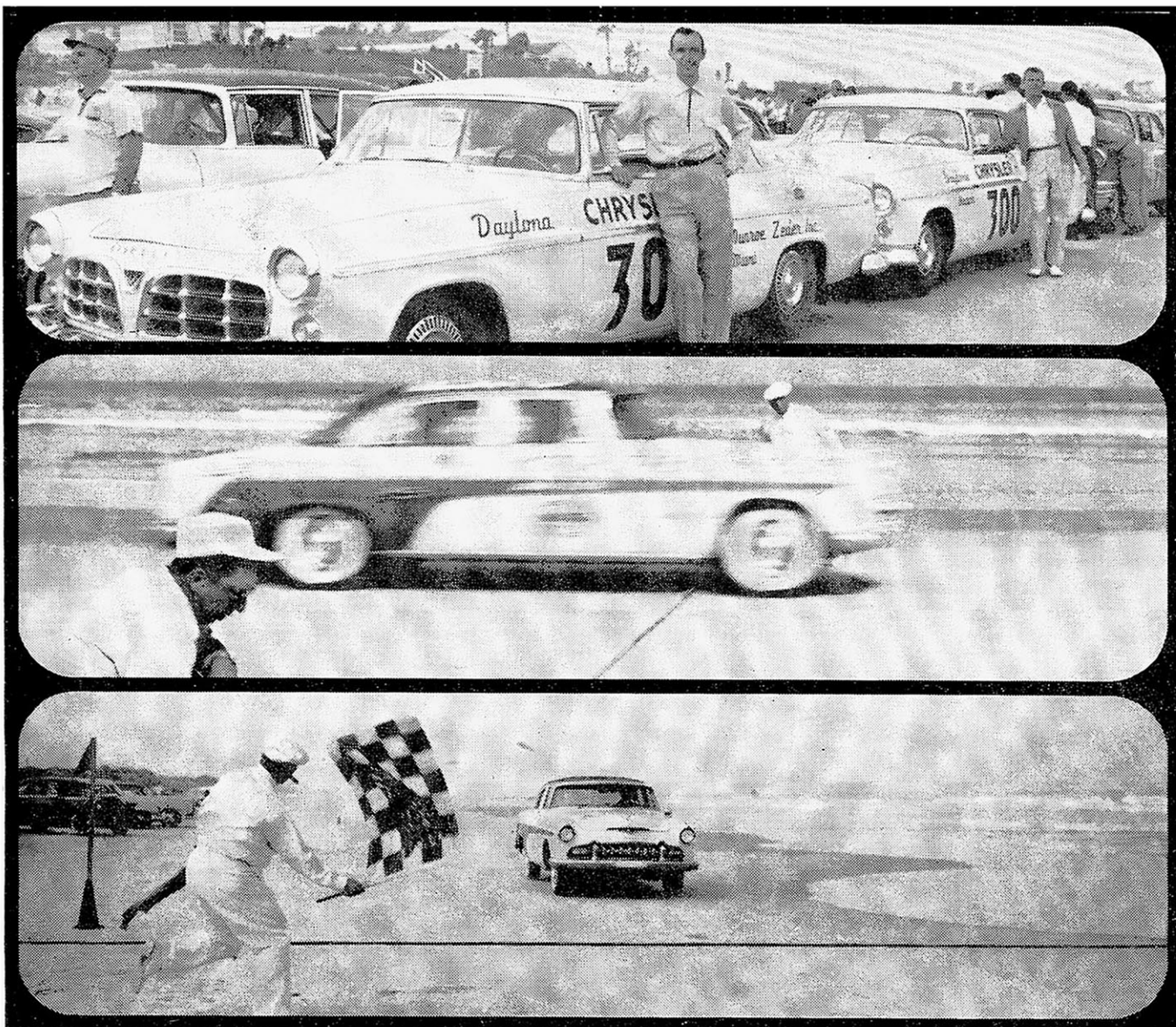
Daytona Beach "Flying Mile," at speeds over 130 mph—plus the safe maneuverability and endurance that swept 1st and 2nd places in the 160-mile Grand National stock car race. For the sleek and stunning new CHRYSLER 300... in regular, though limited production... has the same road-hugging look, feel, and safety that have made the Chrysler name famous in the world's greatest road races.

Arrange for a drive today... your Chrysler Dealer is the man to see!

AMERICA'S MOST POWERFUL STOCK CAR

Brake HP: 300 @ 5200 rpm...
Comp. Ratio: 8.5 to 1... Two
4-barrel carburetors... Special
suspension for maximum cornering,
road-hugging performance
and control... PowerFlite
Automatic Transmission...
Power Brakes... Dual exhaust
system... Wheelbase: 126
inches... Over-all length: 219
inches... Height: 58.6 inches,

See Your Chrysler-Plymouth Dealer



DAYTONA BEACH. Chrysler Corporation cars sweep first and second places in National Stock car races. Chrysler "300" (top picture) breaks record in "Flying Mile" (127.58 mph) and 160-mile Grand National (92.05 mph). De Soto (below) speeds to first place over all cars in its displacement class (112.29 mph).

This, Too, Is **THE FORWARD LOOK**

Another part of THE FORWARD LOOK at Chrysler Corporation is the *finest engines* America has yet produced. Of America's passenger-car manufacturers, only Chrysler Corporation harnesses the extra power and efficiency of the hemispherical combustion chamber used in modern airliner engines. It is not surprising that these V-8 engines break speed and endurance records.

Since the marks shown above were set, 17 more first place wins have been chalked up, plus the dra-

matic victory at the grueling Mexican Road Race in which Dodge swept the *four* places over 37 other cars in its class! All told, Chrysler Corporation cars have rolled up enough firsts at tracks across the nation to completely dominate both NASCAR and AAA-sanctioned stock car racing events.

This exceptional performance is another reason for the public's great acceptance of the beautiful cars of THE FORWARD LOOK.



CHRYSLER CORPORATION

PLYMOUTH • DODGE • DESOTO • CHRYSLER • IMPERIAL

Copyright 1955 by Chrysler Corporation

Tops in TV drama—"CLIMAX!"—CBS-TV, Thursdays.