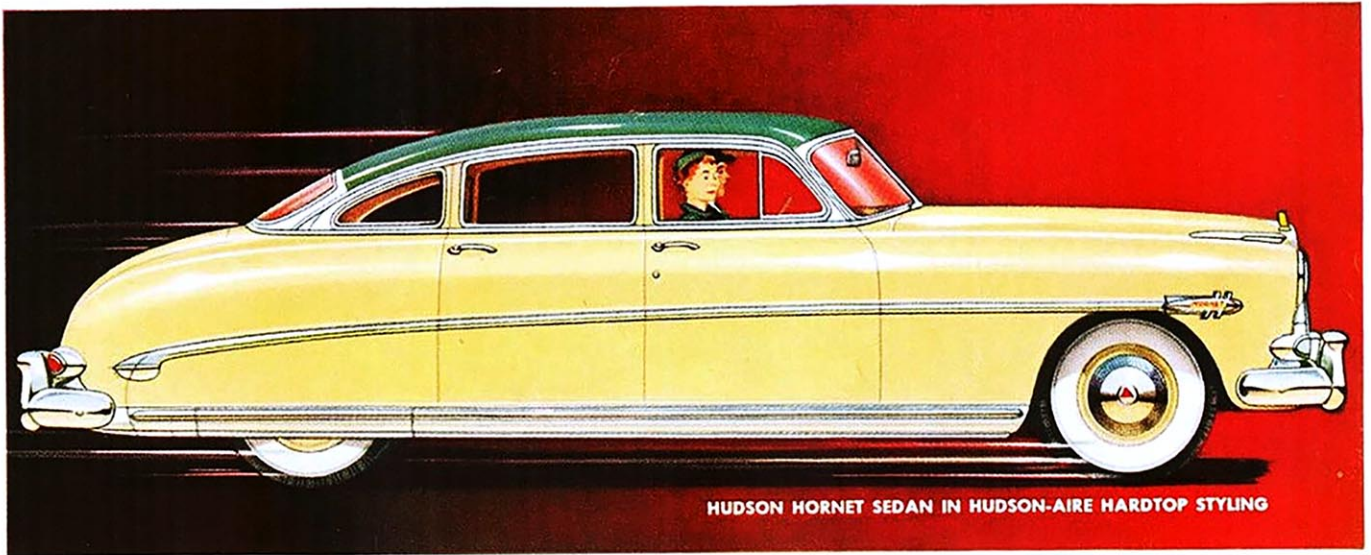


Amazing
Engine
Development

TWIN H-POWER

You must drive it to believe it...
Nothing like it ever before!



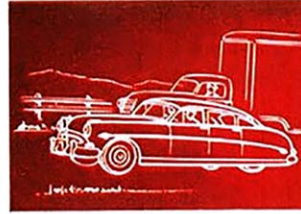
HUDSON HORNET SEDAN IN HUDSON-AIRE HARDTOP STYLING



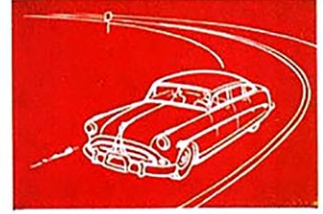
Hudson's amazing new Twin H-Power is a multiple-fueling system that develops more power from every drop of gas—premium fuel is *not* needed.



Twin H-Power gives you performance plus at the speeds you use in daily travel. Here's power so smooth it's delightful, so responsive it's a thrill!



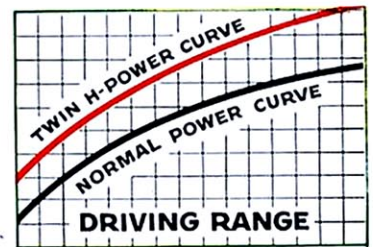
It's restful driving, for you're in charge of every situation—tremendous reserve energy provides a punch to zoom you out of tight spots.



Hudson's exclusive "step-down" design makes for safer driving, too. It gives Hudson America's lowest center of gravity for the world's best and safest ride.

Standard trim and other specifications and accessories subject to change without notice.

FABULOUS HUDSON HORNET AND SPECTACULAR HUDSON WASP



In everyday driving speeds, Twin H-Power gives you performance plus. Available at extra cost in the Hudson Hornet, Hudson Wasp and Commodore Six.

FOUR HUDSON SERIES for '52—fabulous Hudson Hornet, luxurious Commodore Eight or Six, spectacular Hudson Wasp and thrifty Pacemaker.

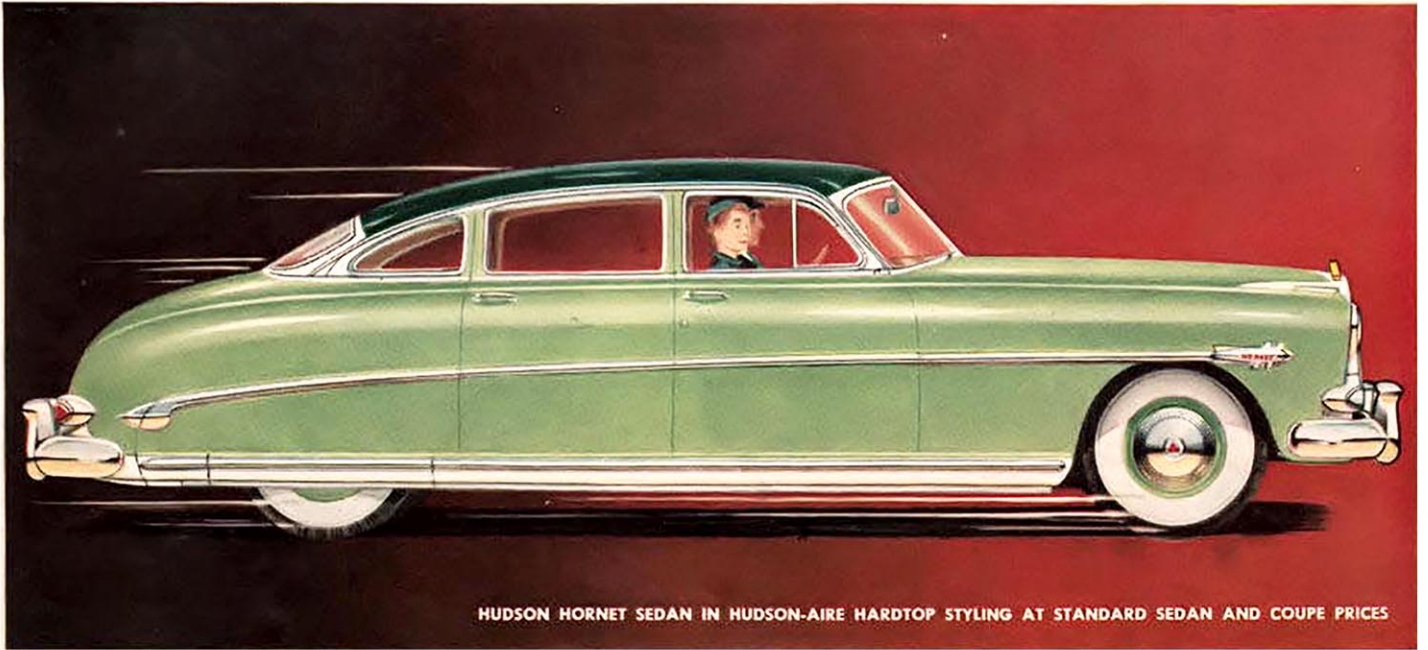
Overdrive or new Dual-Range Hydra-Matic Drive and Solex Safety Glass (tinted, anti-glare) are optional at extra cost on all models.

COME TRY IT
FOR YOURSELF!

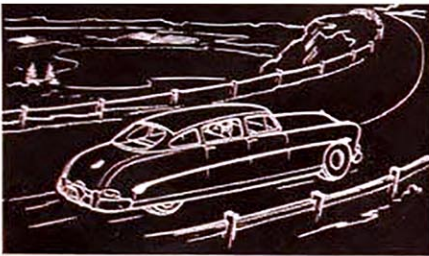
*Sensational
New Engine
Development!*

TWIN H-POWER

...packs real punch into your driving range!



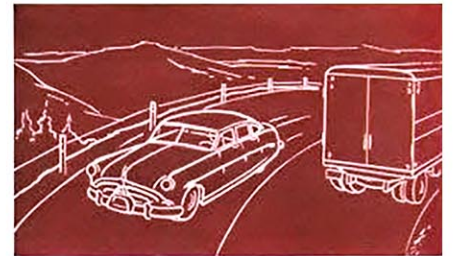
HUDSON HORNET SEDAN IN HUDSON-AIRE HARDTOP STYLING AT STANDARD SEDAN AND COUPE PRICES



Twin H-Power* makes the great Hudson even greater! This new, multiple-fueling system steps up power by developing more energy from every drop of gasoline. . . . P.S.—You don't need premium gasoline, either.



From a standing start through all the driving ranges you use most in daily travel, Twin H-Power joins with Hudson's super-efficient high-compression engines to give you exciting action and steady, dependable power.



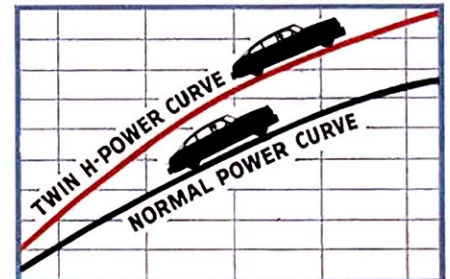
With all this mighty power, Hudson brings you the surest, safest motoring known, because exclusive "step-down" design provides the lowest center of gravity in any American car. Try it at your Hudson dealer's today.

FABULOUS HUDSON HORNET AND SPECTACULAR HUDSON WASP

*Twin H-Power is optional equipment at slight extra cost on the fabulous Hudson Hornet and the Hudson Wasp.

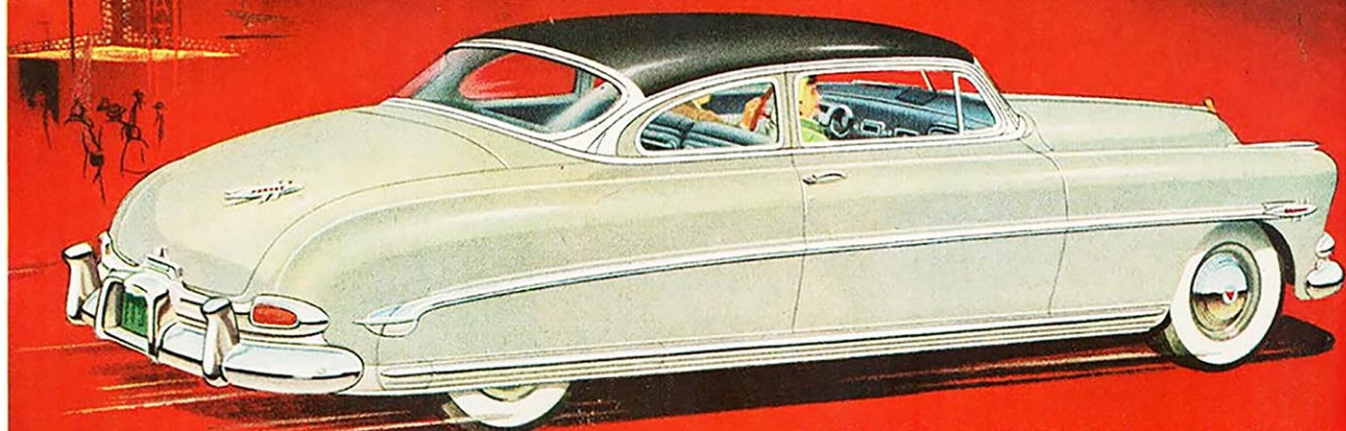
Also optional at extra cost: Overdrive or new Dual-Range Hydra-Matic Drive and Solex Safety Glass (tinted, anti-glare).

Standard trim and other specifications and accessories subject to change without notice.



While you cruise with effortless ease, you feel a satin-smooth, whisper-quiet flow of power with no "flat" spots! You're in comfortable command of every driving situation, city or country.

You see the new style ...
come try the power!



HUDSON HORNET CLUB COUPE IN HUDSON-AIRE HARDTOP STYLING

FABULOUS

HUDSON HORNET

See new Hudson-Aire Hardtop Styling.

Try performance unlimited in the fabulous Hudson Hornet
and its new, lower-priced running mate, the spectacular

HUDSON WASP



HUDSON WASP TWO-DOOR BROUGHAM IN HUDSON-AIRE HARDTOP STYLING

Hudson has the year's finest values . . . four series, priced from near the lowest-cost field. The fabulous Hudson Hornet, the traditionally brilliant Commodore Eight and Six, the spectacular Hudson Wasp, the thrifty Pacemaker. Your Hudson dealer invites you to try them.

HERE'S the inspired beauty of new Hudson-Aire Hardtop Styling, the newest note in motor-car design, previously only on premium-priced models like the hardtop . . . now yours at standard sedan and coupe prices.

Sample Miracle II-Power in the sensational H-145 engine for the Hudson Hornet. Test the amazing action of the H-127 engine, which powers the new Hudson Wasp.

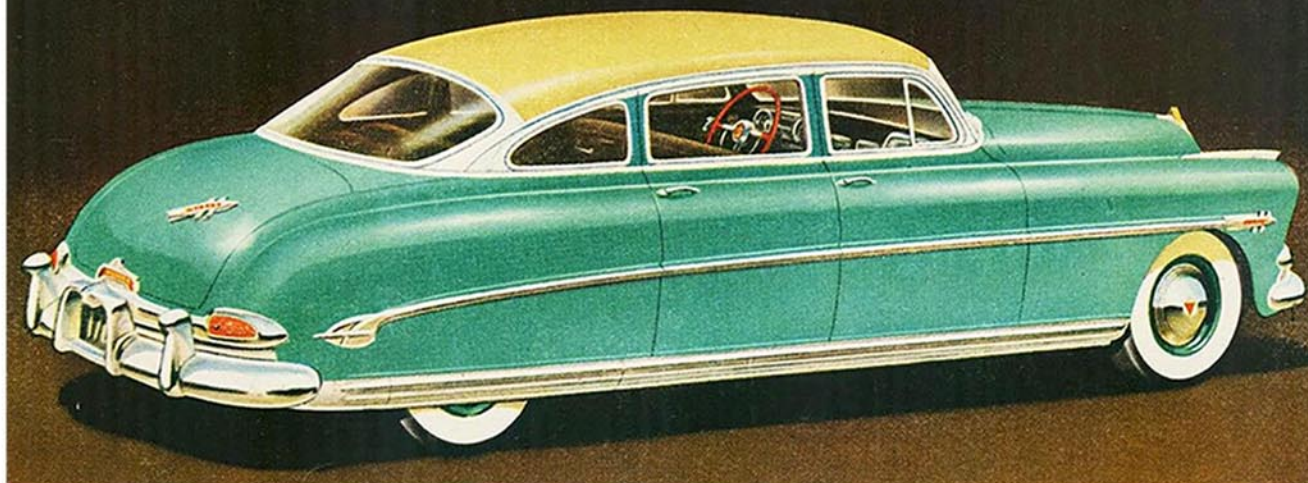
You'll discover performance unlimited—plus marvelous advantages in room, ride and safety possible only with Hudson's exclusive "step-down" design. This new and basically better way to build motor cars has been proved in the hands of over half a million owners!

HYDRA-MATIC DRIVE available for all '52 Hudsons at extra cost.

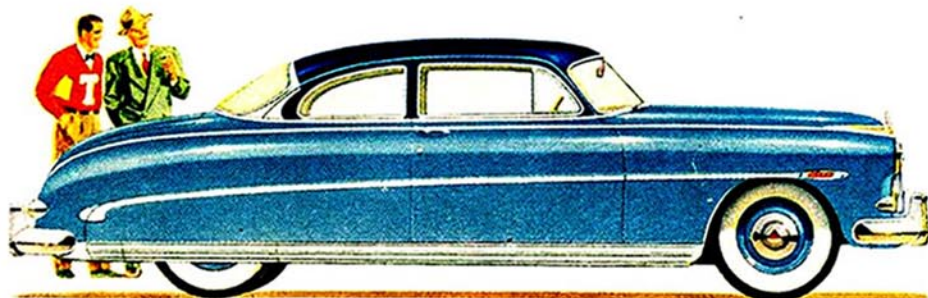
Standard trim and other specifications and accessories subject to change without notice.

Hudson-Aire Hardtop Styling at standard sedan and coupe prices

1952



Fabulous new **HUDSON HORNET**
has a new lower-priced running mate...the spectacular
HUDSON WASP



NEW HUDSON WASP CLUB COUPE IN HUDSON-AIRE HARDTOP STYLING

Hudson showrooms are gleaming with great new values . . .

A fabulous 1952 Hudson Hornet . . . with "step-down" design and new Hudson-Aire Hardtop Styling at standard sedan and coupe prices. This national stock car champion's H-145 engine is more alive, smoother than ever!

And there's a new, lower-priced running mate for this fabulous car — the spectacular Hudson Wasp, shown to the left . . .

The new Commodore Eight, with traditional excellence, offers Hudson-Aire Hardtop Styling with utmost luxury; and has the smooth, alert power of Hudson's tried and proved Super-Eight engine! There is also a brilliant new Commodore Six and a thrifty new Pacemaker for '52.

New Hudson Wasp . . . "step-down" designed companion car for the Hudson Hornet . . . with thrilling performance in its power-charged H-127 engine!

This sparkling new car brings you Hudson-Aire Hardtop Styling and a

range of five body styles. Like all Hudsons for '52, it is available with four-speed Hydra-Matic Drive.*

Your Hudson dealer is displaying wonderful values and wonderful buys. Better see him right away!

Standard trim and other specifications and accessories subject to change without notice. *Optional at extra cost

Hudson-Aire Hardtop Styling at standard sedan and coupe prices